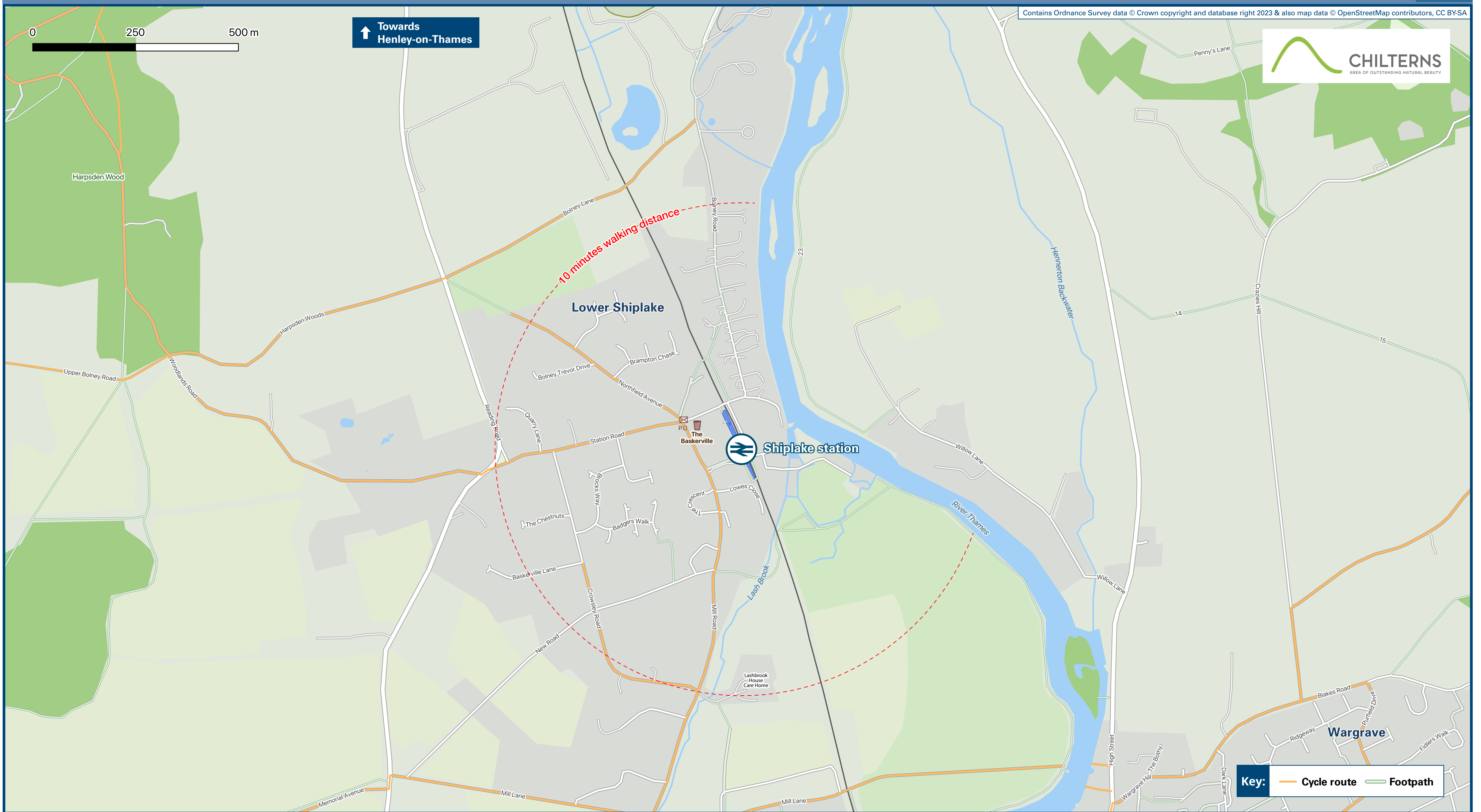




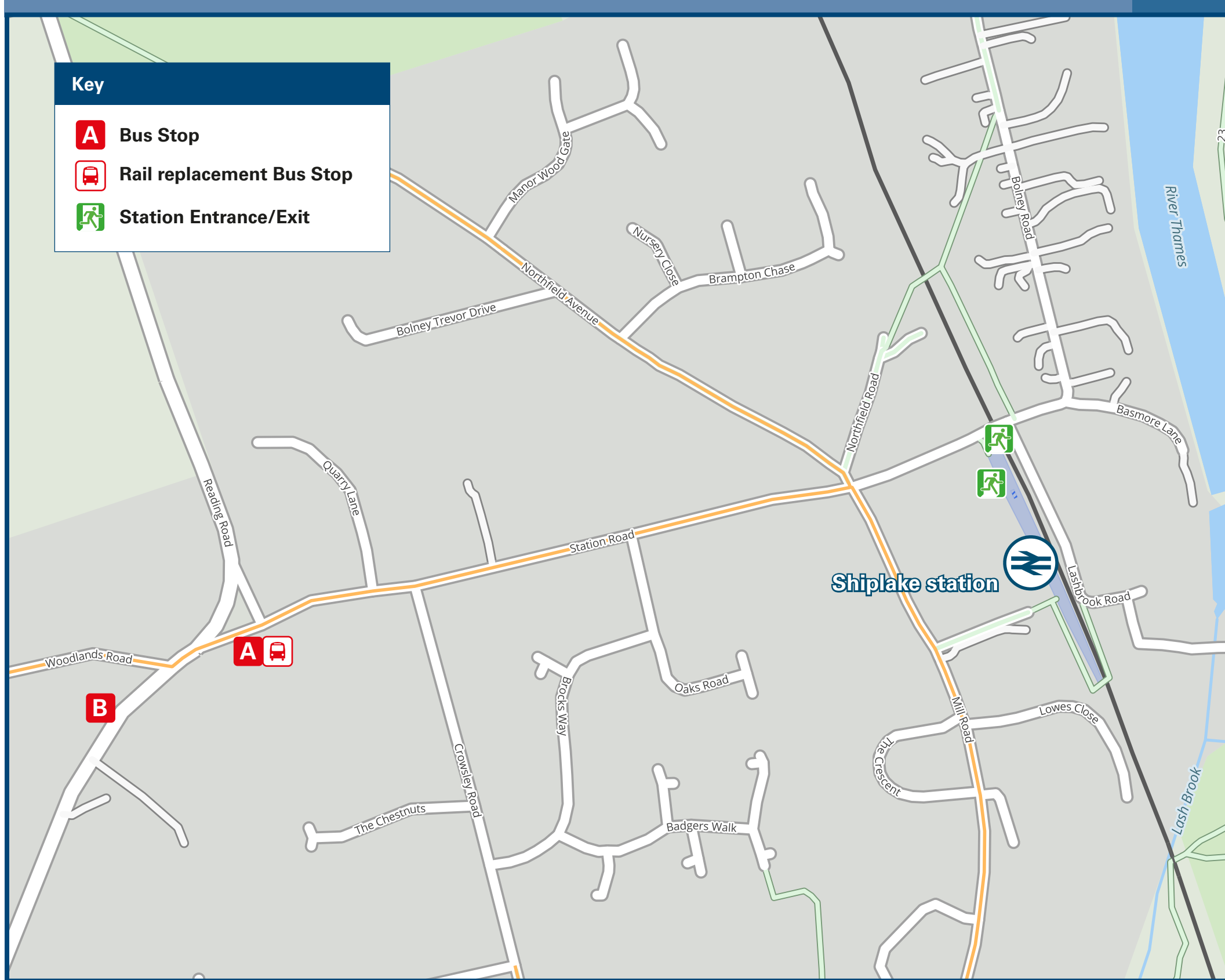
# Shiplake Station

# Onward Travel Information

## Local area map



## Buses



Rail replacement buses/coaches depart from the bus stop on Station Road by the War Memorial.

## Main destinations by bus

(Data correct at November 2023)

DESTINATION	BUS ROUTES	BUS STOP
Binfield Heath	800	A
Caversham (Henley Road)	800	A
Cressex	800	B
Dunsden Green	800	A
Harpden	800	B
Henley-on-Thames	800	B
High Wycombe	800	B
Lower Caversham	800	A
Marlow	800	B
Marlow Bottom	800	B
Medmenham	800	B
Reading	800	A
Shiplake	800	A
Shiplake Cross (Mill Lane)	800	A
Shiplake Row	800	A

### Notes

- Bus route 800 operates daily, Mondays to Sundays.
- For bus times and the latest bus service information, please contact TraveLine on 0871 200 22 33 or contact the bus operator (see below):
- Arriva (for bus route 800) call 0344 800 44 11
- Direct trains operate from this station to Henley-on-Thames.
- For connecting train services to Reading, please change trains at Twyford.
- For connecting train services to Marlow, please change trains at Twyford and Maidenhead.

## Taxis

Shiplake station has no taxi rank or cab office. Advance booking is essential, please consider using the following local operators: (Inclusion of this number doesn't represent any endorsement of the taxi firm)

**AAA Executive Cars**  
0118 950 4030

**Loddon Cars**  
0118 932 1321

**Twyford Executive Cars**  
0118 903 4903

## Further information about all onward travel

<b>Local Cycle Info</b> oxfordshire.gov.uk For more information about cycle routes.	<b>National Cycle Info</b> sustrans.org.uk Sustrans is the UK's leading sustainable transport charity.	<b>Bus Times</b> See timetable displays at bus stops. traveLine public transport info www.traveLine.info 0871 200 22 33 calls cost 12p per minute plus your phone company's access charge	<b>NextBuses</b> .mobi Download on the App Store Find the bus times for your stop. Search for a bus stop by entering a postcode, street & town or a stop name & town.	<b>PlusBus</b> plusbus.info A discount price "bus pass" that you buy with your train ticket. It gives you unlimited bus travel around your chosen town, on participating buses.
---	--	--	--	---

## National Rail Enquiries

<b>Online</b> nationalrail.co.uk	<b>NRE App</b> Free National Rail Enquiries app for iOS and Android	<b>Social Media</b> facebook.com/nationalrailenq @nationalrailenq	<b>Alert Me</b> You can sign up to Alert Me messages on the National Rail Enquiries website where you can receive train and platform notifications directly to your smart phone. nationalrail.co.uk/alertme	<b>Contact Centre</b> 03457 48 49 50 Calls cost no more than calls to geographic numbers (01 or 02) and may be recorded.	<b>PlusBike</b> nationalrail.co.uk/plusbike For more information.
-------------------------------------	--	---	---	--	---



This poster shows details of popular destinations and main, frequent bus routes. Additional services may run, so please check with TraveLine or see posters at local bus stops. Whilst considerable care has been taken to ensure the information contained on this poster is correct and accurate, National Rail cannot accept responsibility for any loss or inconvenience caused by any errors or omissions, or for loss, damage, injury or inconvenience relating to the cancellation, alteration, delay or diversion of a service. For any feedback, please e-mail comments@onwardtravelposters.com

Scan this code with your mobile for full station information.