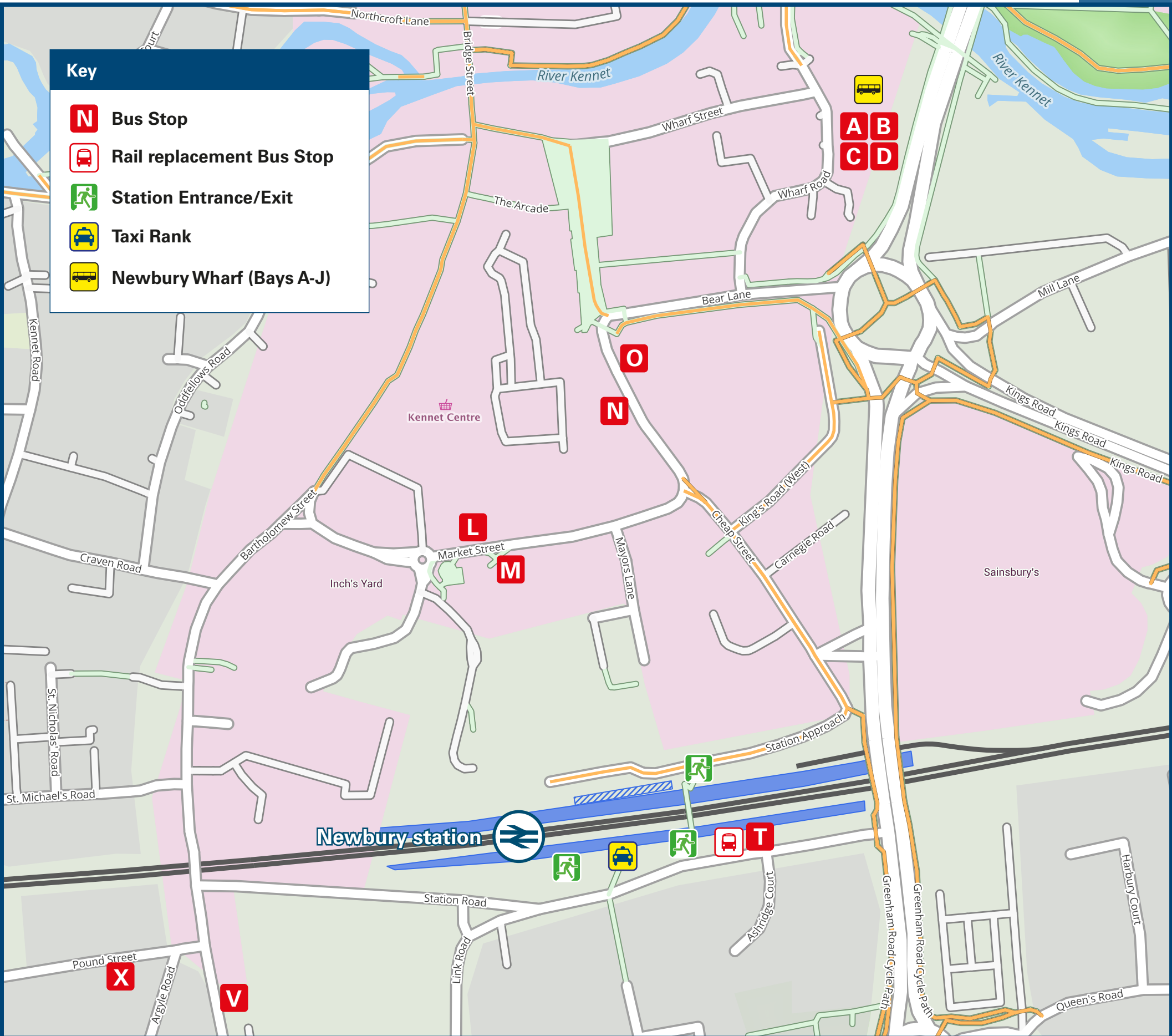




Newbury Station

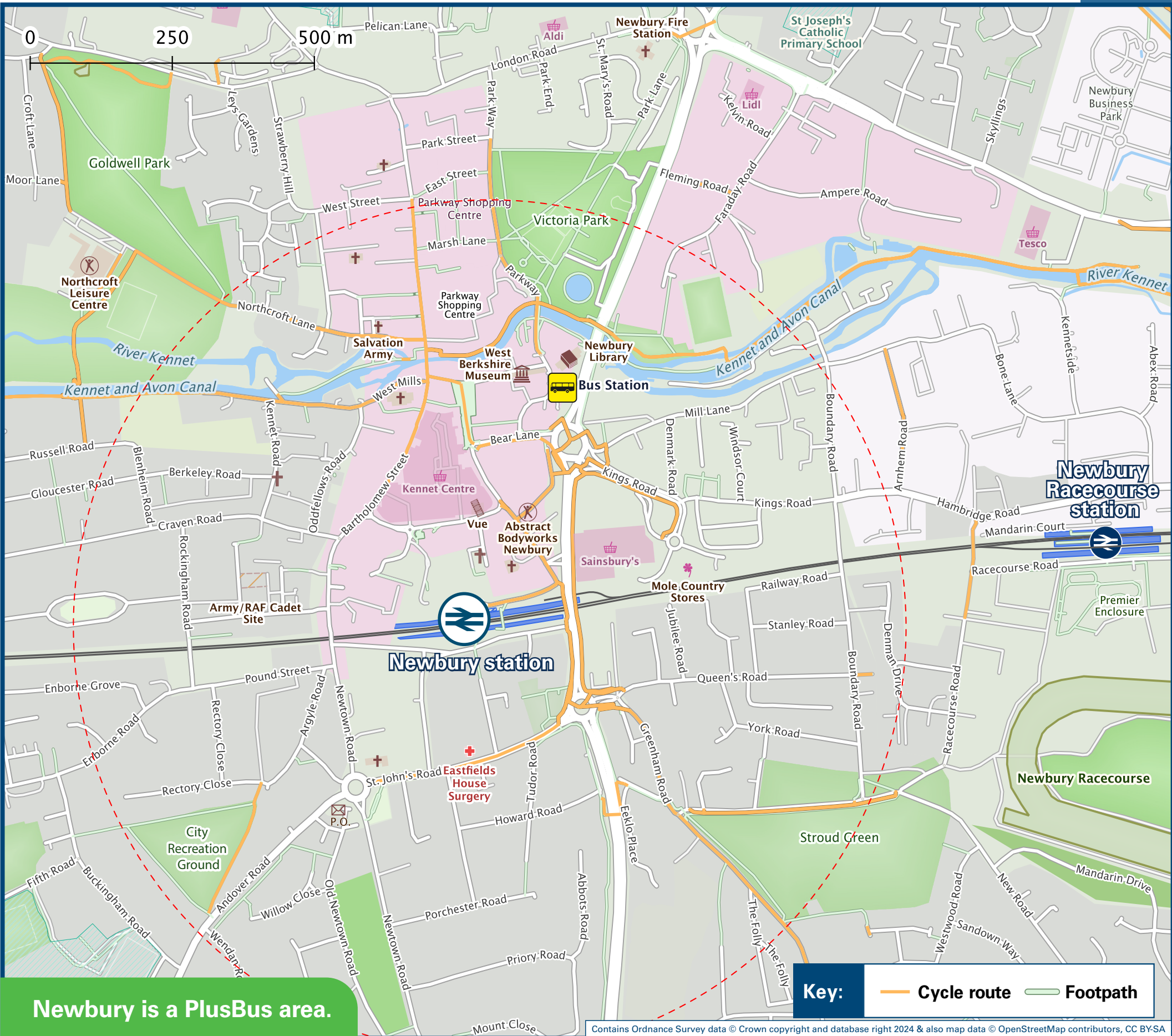
Onward Travel Information

Buses and Taxis



Rail replacement buses from the bus Stop outside of the Station on Station Road adjacent to Platform 1.

Local area map



PlusBus is a discount price 'bus pass' that you buy with your train ticket. It gives you unlimited bus travel around your chosen town, on participating buses. Visit www.plusbus.info

Main destinations by bus



| DESTINATION | BUS ROUTES | BUS STOP |
|--|---------------|----------|
| Aldermaston Wharf | 1 (jet black) | A# |
| Andover | 7# | M, O, V |
| Basingstoke | 32 | M, O, V |
| Bishops Green | 103~ | C# |
| | 103b~ | M, O, V |
| Boxford | 4# | T |
| Calcot | 1 (jet black) | A# |
| Chilton | X34 | D# |
| Colthrop | 1 (jet black) | A# |
| Didcot (also serves Didcot Parkway Station) | X34 | D# |
| Donnington (Square) | X34 | D# |
| East Garston | 4# | T |
| East Ilsley | 6# | T |
| Eastbury | 4# | T |
| Enborne | 3# | M, O |
| Great Shefford | 4# | T |
| Great Western Park (Didcot) | X34 | D# |
| Greenham (Pigeon's Farm) | 2 | M, O, X |
| | 8 | C# |
| Greenham (The Nightingales) | 8 | C# |
| | 103 | C# |
| Hampstead Norreys | 6# | T |
| Hamstead Marshall | 3# | M, O |
| Harwell Campus (also serves Harwell Village) | X34 | D# |
| Headley | 32 | M, O, V |
| Hermitage | 6# | T |
| Highclere | 7# | M, O, V |
| Hungerford | 3# | M, O |

| DESTINATION | BUS ROUTES | BUS STOP |
|---|---|----------|
| Inkpen | 3# | M, O |
| Kingsclere | 32 | M, O, V |
| Kintbury | 3# | M, O |
| Lambourn | 4# | T |
| Lower Padworth | 1 (jet black) | A# |
| Midgham Village (Bath Road) | 1 (jet black) | A# |
| | 103~ | C# |
| New Greenham Park (Business Park) | 103a~, 103b~ | M, O, V |
| | 32 | M, O, V |
| Newbury Business Park (London Road) | 1a, 1c | B# |
| Newbury (Racecourse Estate) | 9 | C# |
| Newbury Racecourse (Grandstand) | 9 | C# |
| | 10 minutes walk, please see maps for directions | |
| Newbury Wharf (for bus bays A, B, C, D) | 2, 3#, 7#, 32, 103a~, 103b~ | L, N |
| | 4#, 6# | T |
| Newbury (Tumpike Estate) | 1 (jet black) | A# |
| Newbury (Vodafone Headquarters Campus) | X34 | D# |
| North Hampshire Hospital (Basingstoke) | 32 | M, O, V |
| Reading | 1 (jet black) | A# |
| Rowstock | X34 | D# |
| | 1 (jet black) | A# |
| Shaw | 6# | T |
| Speen | 4# | T |
| Stockcross | 4# | T |
| Thatcham (The Broadway) | 1 (jet black) | A# |
| | 1a, 1c | B# |
| Theale | 1 (jet black) | A# |

| DESTINATION | BUS ROUTES | BUS STOP |
|-----------------------------------|---------------|----------|
| Wash Common | 2 | M, O, X |
| Wash Water | 7# | M, O, V |
| West Berkshire Community Hospital | 1 (jet black) | A# |
| | 1a, 1c | B# |
| West Ilsley | 6# | T |
| Woolhampton | 1 (jet black) | A# |
| Woolton Hill | 7# | M, O, V |

Notes

- PlusBus** destination, please see below for details.
- Bus route 1 (jet black) and 32 operate daily.
- Bus routes 1a, 1c, 2, 8, 9 and X34 operate Mondays to Saturdays.
- For bus times, please see bus stop timetables at Newbury Wharf or contact Traveline www.traveline.info (or call: 0871 200 22 33)
- Direct trains operate to this destination from this station.
- Direct trains operate to Midgham Station which is located in the village of Woolhampton.
- * Certain journeys only from this bus stop to this destination. Please check the timetable.
- # Bus routes 3, 4, 6 and 7 operate limited services on Mondays to Saturdays, only.
- ~ Bus routes 103, 103a and 103b operate limited services on Mondays to Fridays, only.
- Taxi Info Newbury station is served by a taxi rank or cab office. Check availability before travelling, and pre-book if necessary. Please consider using the following local operators: (Inclusion of this number doesn't represent any endorsement of the taxi firm)

Taxis

Newbury station is served by a taxi rank or cab office. Check availability, and pre-book if necessary. Please consider using the following local operators: (Inclusion of this number doesn't represent any endorsement of the taxi firm)

Go Green Taxis
01635 800 990

Cabco Taxis
01635 33333

Ave Cabs
01635 312 12

Further information about all onward travel

| Local Cycle Info | National Cycle Info | Bus Times | NextBuses | PlusBus |
|--|---|---|---|---|
| westberks.gov.uk For more information about cycle routes. | sustrans.org.uk Sustrans is the UK's leading sustainable transport charity. | See timetable displays at bus stops. www.traveline.info 0871 200 22 33 calls cost 10p per minute plus your phone company's access charge | www.nextbuses.com Find the bus times for your stop. Search for a bus stop by entering a postcode, street & town or a stop name & town. | plusbus.info A discount price 'bus pass' that you buy with your train ticket. It gives you unlimited bus travel around your chosen town, on participating buses. |

National Rail Enquiries

| Online | NRE App | Social Media | Alert Me | Contact Centre | PlusBike |
|--|--|---|--|--|---|
| nationalrail.co.uk | Free National Rail Enquiries app for iOS and Android | facebook.com/nationalrailenq @nationalrailenq | You can sign up to Alert Me messages on the National Rail Enquiries website where you can receive train and platform notifications directly to your smart phone. nationalrail.co.uk/alertme | 03457 48 49 50 Calls cost no more than calls to geographic numbers (01 or 02) and may be recorded. | nationalrail.co.uk/plusbike For more information. |



National Rail
Britain's train companies working together



This poster shows details of popular destinations and main, frequent bus routes. Additional services may run, so please check with Traveline or see posters at local bus stops. Whilst considerable care has been taken to ensure the information contained on this poster is correct and accurate, National Rail cannot accept responsibility for any loss or inconvenience caused by any errors or omissions, or for loss, damage, injury or inconvenience relating to the cancellation, alteration, delay or diversion of a service. For any feedback, please e-mail comments@onwardtravelposters.com

Scan this code with your mobile for full station information.