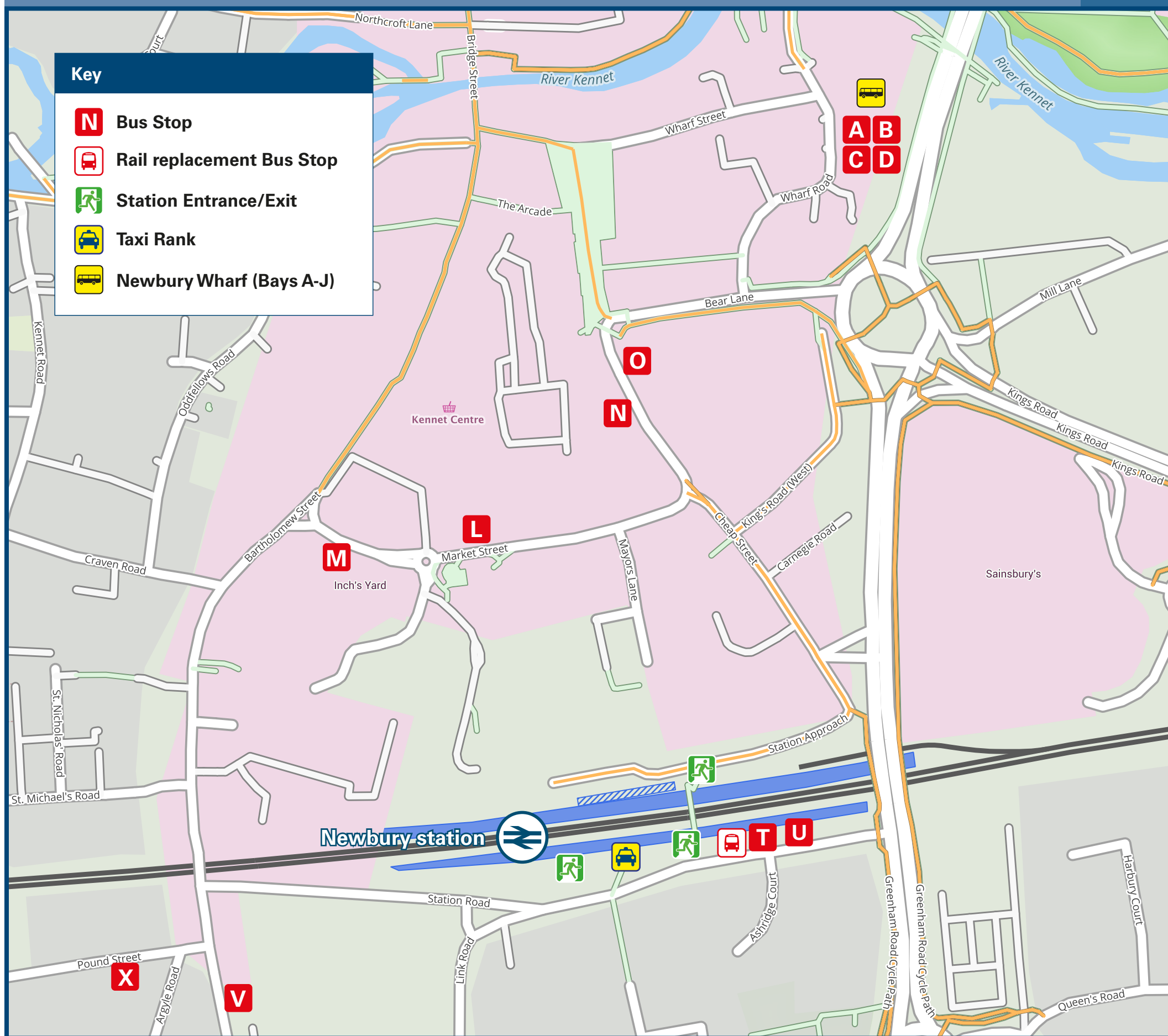




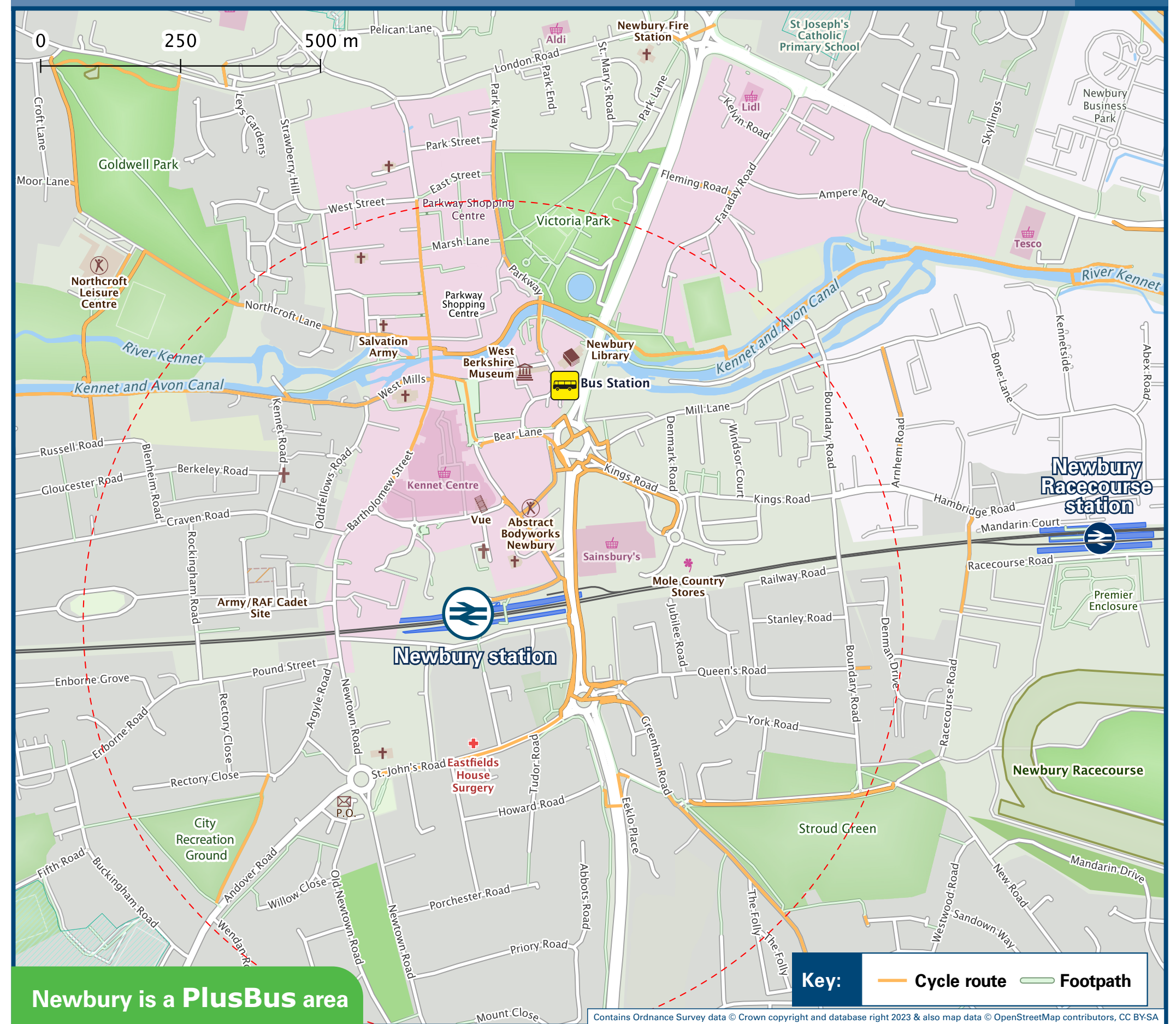
Newbury Station Onward Travel Information

Buses and Taxis



Rail replacement buses from the bus Stop outside of the Station on Station Road adjacent to Platform 1.

Local area map



Newbury is a PlusBus area

PlusBus is a discount price 'bus pass' that you buy with your train ticket. It gives you unlimited bus travel around your chosen town, on participating buses. Visit www.plusbus.info

Main destinations by bus

(Data correct at June 2024)



DESTINATION	BUS ROUTES	BUS STOP
Aldermaston Wharf	1 (jet black)	A#
Andover	7	M, O, V, D#
Basingstoke	The Link	M, O, V, A#
Beedon	5c	C#
	6, 6a	M*, T*, D#
	103	C#
Bishops Green	103a, 103b	M, O, V, C#
	The Link+	M, O, V, A#
Boxford	4	M*, T*, C#
Brightwalton	5, 5a	C#
Burghclere	7a	M, O, V, D#
Calcot	1 (jet black)	A#
Chaddleworth	5, 5a	C#
	5c	C#
Chieveley/Downend	6, 6a	M*, T*, D#
Chilton	X34	D#
Colthrop	1 (jet black)	A#
Didcot (also serves Didcot Parkway Station)	X34	D#
Donnington	5, 5a, 5c	C#
	6, 6a	M*, T*, D#
East Garston	4	M*, T*, C#
East Ilsley	6, 6a	M*, T*, D#
Eastbury	4	M*, T*, C#
Enborne	3, 3a	M, O, A#
Great Shefford	4	M*, T*, C#
Great Western Park (Didcot)	X34	D#
Greenham (Pigeon's Farm)	2	M, O, X, B#
	8	C#
Greenham (The Nightingales)	8	C#
	9c, 103	C#
Hampstead Norreys	6, 6a	M*, T*, D#
Hamstead Marshall	3, 3a	M, O, A#
Harwell Campus (also serves Harwell Village)	X34	D#
Hermitage	6, 6a	M*, T*, D#
Highclere	7	M, O, V, D#
Hungerford	3, 3a	M, O, A#

DESTINATION	BUS ROUTES	BUS STOP
Inkpen	3	M, O, A#
Kingsclere	The Link	M, O, V, A#
Kintbury	3, 3a	M, O, A#
Lambourne	4, 4a	M*, T*, C#
Leckhampstead	5, 5a	C#
Lilley	5a	C#
Lower Padworth	1 (jet black)	A#
Midgham Village (Bath Road)	1 (jet black)	A#
	103	C#
New Greenham Park (Business Park)	103a, 103b	M, O, V, C#
	The Link	M, O, V, A#
Newbury Business Park (London Road)	1a, 1c	B#
Newbury (Racecourse Estate)	9, 9c	C#
Newbury Racecourse (Grandstand)	9, 9c	C#
Newbury Wharf (for bus bays A, B, C, D) #	2, 3, 3a, 7, 7a, 103a, 103b, The Link	M, O
	4, 6, 6a	T
Newbury (Tumpike Estate)	1 (jet black), 1E	A#
Newbury (Vodafone Headquarters Campus)	V1 (See Note @)	O
	X34	D#
North Hampshire Hospital (Basingstoke)	The Link	M, O, V, A#
North Heath	5a	C#
Peasemore Village	5a	C#
Reading	1 (jet black)	A#
Rowstock	X34	D#
	5a	C#
Shaw	6	M*, T*, D#
Snelsmore Common	5a	C#
Speen	4, 4a, 4b	M*, T*, C#
Stockcross	4, 4a	M*, T*, C#
Thatcham	1 (jet black), 1E	A#
	1a, 1c	B#
Theale	1 (jet black)	A#
Wash Common	2	M, O, X, B#
	7, 7a	M, O, V, D#
Wash Water	7, 7a	M, O, V, D#

DESTINATION	BUS ROUTES	BUS STOP
West Berkshire Community Hospital	1 (jet black), 1E	A#
	1a, 1c	B#
West Ilsley	6, 6a	M*, T*, D#
Woolhampton	1 (jet black)	A#
Woolton Hill	7, 7a	M, O, V, D#

Notes

- PlusBus destination, please see below for details.
- Bus route 1 (jet black) operates daily.
- Bus routes 1a, 1c, 2, 3, 3a, 4, 4a, 4b, 6, 6a, 7, 8, 9, 'The Link' and X34 operate Mondays to Saturdays.
- Bus routes 5, 5a, 5c, 7a, 9c, 103, 103a and 103b operate Mondays to Fridays only.
- For bus times, please see bus stop timetables at Newbury Wharf or contact Traveline on 0871 200 22 33 or contact the bus operator (see below):
- Newbury & District (for bus routes 1a, 1c, 1d, 2, 2a, 2c, 3, 3a, 4, 4a, 4b, 5a, 5c, 6, 6a, 8, 9, 9c, 103, 103a & 103b) call 01635 33855; Reading Buses (for bus route 1 jet black) call 0118 959 4000; Stagecoach South (for bus routes 7, 7a & 'The Link') call 0345 241 8000; Thames Travel (for bus route X34) call 01865 785 400 or West Berkshire Council Transport Services (for bus route 5) call 01635 503 248.
- Direct trains operate to this destination from this station.
- Direct trains operate to Midgham Station which is located in the village of Woolhampton.
- * Certain journeys only from this bus stop to this destination. Please check the timetable.
- + Bus route 'The Link' calls at Bishops Green Turn on A339 which is a 10 minutes walk to the village.
- # Bus bays A, B, C, D are located at Newbury Wharf, please allow at least 10 minutes walking time from this station, see maps for directions or catch any bus from stops M, O or T.
- Bus route 1E operates late nights on Fridays and Saturdays only.
- < All bus routes call at Thatcham Broadway: Bus route 1a runs via Lower Way, 1c runs via Henwick Lane/Westfield Road and 1 (jet black) runs via Bath Road.
- @ Bus V1 operates daytime Mondays to Fridays from stop (U) outside this station. This is a private contract bus service for the use of Vodafone staff, contractors and visitors only and not a public bus service. Contact Vodafone on 01635 33251 for more information.

Taxis

Newbury station is served by a taxi rank or cab office. Check availability, and pre-book if necessary. Please consider using the following local operators: (Inclusion of this number doesn't represent any endorsement of the taxi firm)

Go Green Taxis
01635 800 990

Cabco Taxis
01635 33333

Ave Cabs
01635 312 12

Further information about all onward travel

Local Cycle Info westberks.gov.uk For more information about cycle routes.	National Cycle Info sustrans.org.uk Sustrans is the UK's leading sustainable transport charity.	Bus Times See timetable displays at bus stops. www.traveline.info 0871 200 22 33 calls cost 10p per minute plus your phone company's access charge	NextBuses Find the bus times for your stop. Search for a bus stop by entering a postcode, street & town or a stop name & town.	PlusBus plusbus.info A discount price 'bus pass' that you buy with your train ticket. It gives you unlimited bus travel around your chosen town, on participating buses.
---	---	---	--	---

National Rail Enquiries

Online nationalrail.co.uk	NRE App Free National Rail Enquiries app for iOS and Android	Social Media facebook.com/nationalrailenq @nationalrailenq	Alert Me You can sign up to Alert Me messages on the National Rail Enquiries website where you can receive train and platform notifications directly to your smart phone. nationalrail.co.uk/alertme	Contact Centre 03457 48 49 50 Calls cost no more than calls to geographic numbers (01 or 02) and may be recorded.	PlusBike nationalrail.co.uk/plusbike For more information.
---	--	--	---	--	--



National Rail
Britain's train companies working together



This poster shows details of popular destinations and main, frequent bus routes. Additional services may run, so please check with Traveline or see posters at local bus stops. Whilst considerable care has been taken to ensure the information contained on this poster is correct and accurate, National Rail cannot accept responsibility for any loss or inconvenience caused by any errors or omissions, or for loss, damage, injury or inconvenience relating to the cancellation, alteration, delay or diversion of a service. For any feedback, please e-mail comments@onwardtravelposters.com

Scan this code with your mobile for full station information.