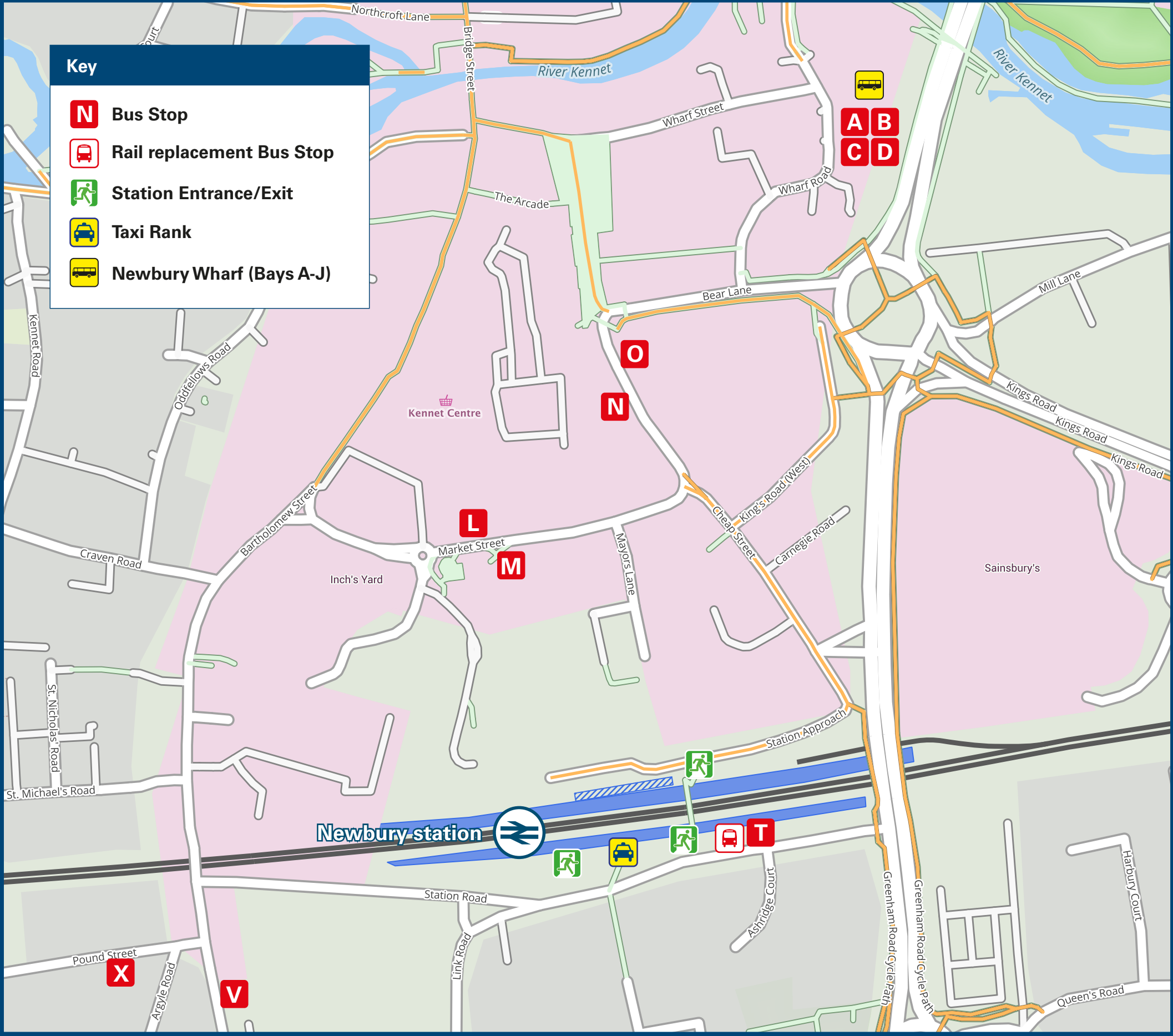




Newbury Station

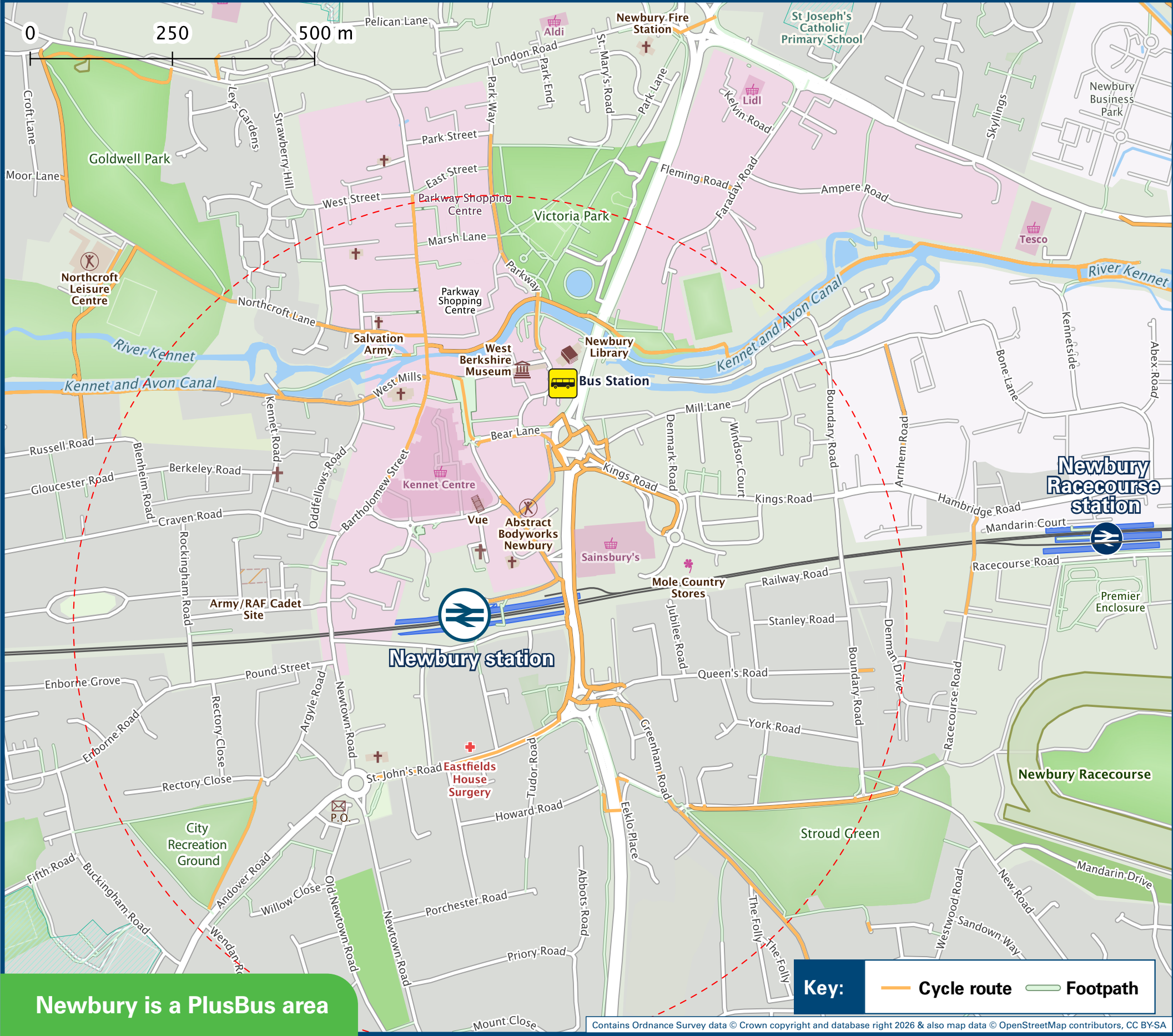
Onward Travel Information

Buses and Taxis



Rail replacement buses from the bus Stop outside of the Station on Station Road adjacent to Platform 1.

Local area map



Add **PlusBus** to your train ticket—now available on eTicket from leading rail ticketing apps—for unlimited bus travel in the **PlusBus** zone in your destination town or city. Visit www.plusbus.info

Main destinations by bus

(Data correct at January 2026)



DESTINATION	BUS ROUTES	BUS STOP
Aldermaston Wharf	1 (jet black)	A
Basingstoke	32	M, D, V
Bishops Green	103~ 103B~	C M, O, V
Boxford	4#	T
Calcot	1 (jet black)	A
Chilton	X34	D
Colthrop	1 (jet black)	A
Didcot (also serves Didcot Parkway Station)	X34	D
Donnington (Square)	X34	D
East Garston	4#	T
East Ilsley	6#	T
Eastbury	4#	T
Enborne	3#	M, O, X
Great Shefford	4#	T
Great Western Park (Didcot)	X34	D
Greenham (Pigeon's Farm)	2	M, D, X
Greenham (The Nightingales)	8	C
Greenham Common (Watson Technology Centre)	103~, 103A~, 103B~	C
Hampstead Norreys	6#	T
Hamstead Marshall	3#	M, D, X
Harwell Campus (also serves Harwell Village)	X34	D
Headley	32	M, O, V
Hermitage	6#	T
Hungerford	3#	M, D, X

DESTINATION	BUS ROUTES	BUS STOP
Inkpen	3#	M, O, X
Kingsclere	32	M, O, V
Kintbury	3#	M, O, X
Lambourn	4#	T
Lower Padworth	1 (jet black)	A
Midgham Village (Bath Road)	1 (jet black)	A
New Greenham Park (Business Park)	103~ 103A~, 103B~ 32	C M, O, V M, O, V
Newbury Business Park (London Road)	1a, 1c	B
Newbury (Racecourse Estate)	9	C
Newbury Racecourse (Grandstand)	9	C
Newbury Wharf (for bus bays A, B, C, D)	10 minutes walk, please see maps for directions 2, 3#, 32, 103A~, 103B~ 4#, 6#	L, N T
Newbury (Tumpike Estate)	1 (jet black)	A
Newbury (Vodafone Headquarters Campus)	X34	D
North Hampshire Hospital (Basingstoke)	32	M, O, V
Reading	1 (jet black)	A
Rowstock	X34	D
Shaw	1 (jet black)	A
Speen	6#	T
Stockcross	4#	T
Thatcham (The Broadway)	1 (jet black) 1a, 1c	A B

DESTINATION	BUS ROUTES	BUS STOP
Theale	1 (jet black)	A
Wash Common	2	M, O, X
West Berkshire Community Hospital	1 (jet black) 1a, 1c	A B
West Ilsley	6#	T
Weston Village	4#	T
Woolhampton	1 (jet black)	A

Notes

- PlusBus** destination, please see below for details. Bus route 1 (jet black) and 32 operate daily services. Bus routes 1a, 1c, 2, 8, 9 & X34 operate services on Mondays to Saturdays, only. From Newbury Railway Station the West Berkshire Community Connect Northwest Downslands Service operates. This operates Monday to Friday between 0830 and 1900, to: Chaddleworth, Chieveley, Beedon, Curridge, Peasmore, Brightwalton, Boxford, Winterbourne, Leckhampstead, Fawley and Farnborough. Customers have to be registered on the service to use it – please Tel: 01635 519650 for further info. For bus times, please see bus stop timetables at Newbury Wharf or contact Traveline on www.traveline.info or call: 0871 200 22 33
- Direct trains operate to this destination from this station.
- Direct trains operate to Midgham Station which is located in the village of Woolhampton.
- * Certain journeys only from this bus stop to this destination. Please check the timetable.
- # Bus routes 3, 4 and 6 operate limited services on Mondays to Saturdays, only.
- ~ Bus routes 103, 103A and 103B operate limited services on Mondays to Fridays, only.
- Taxi Info Newbury station is served by a taxi rank or cab office. Check availability before travelling, and pre-book if necessary. Please consider using the following local operators: (Inclusion of this number doesn't represent any endorsement of the taxi firm)

Taxis

Newbury station is served by a taxi rank or cab office. Check availability, and pre-book if necessary. Please consider using the following local operators: (Inclusion of this number doesn't represent any endorsement of the taxi firm)

Go Green Taxis
01635 800 990

Cabco Taxis
01635 33333

Ave Cabs
01635 312 12

Further information about all onward travel

Local Cycle Info	National Cycle Info	Bus Times	PlusBus
westberks.gov.uk For more information about cycle routes.	walkwheelcycletrust.org.uk	See timetable displays at bus stops. www.traveline.info 0871 200 22 33 calls cost 15p per minute plus your phone company's access charge	 plusbus.info PlusBus is a discount price 'bus pass' that you buy with your train ticket. It gives you unlimited bus travel around your chosen town, on participating buses. Visit www.plusbus.info

National Rail Enquiries

Online	NRE App	Social Media	Alert Me	Contact Centre	PlusBike
nationalrail.co.uk	Free National Rail Enquiries app for iOS and Android	facebook.com/nationalrailenq @nationalrailenq	You can sign up to Alert Me messages on the National Rail Enquiries website where you can receive train and platform notifications directly to your smart phone. nationalrail.co.uk/alertme	03457 48 49 50 Calls cost no more than calls to geographic numbers (01 or 02) and may be recorded.	nationalrail.co.uk/plusbike For more information.

GWR | Great Western Railway



National Rail
Britain's train companies working together



This poster shows details of popular destinations and main, frequent bus routes. Additional services may run, so please check with Traveline or see posters at local bus stops. Whilst considerable care has been taken to ensure the information contained on this poster is correct and accurate, National Rail cannot accept responsibility for any loss or inconvenience caused by any errors or omissions, or for loss, damage, injury or inconvenience relating to the cancellation, alteration, delay or diversion of a service. For any feedback, please e-mail comments@onwardtravelposters.com

Scan this code with your mobile for full station information.