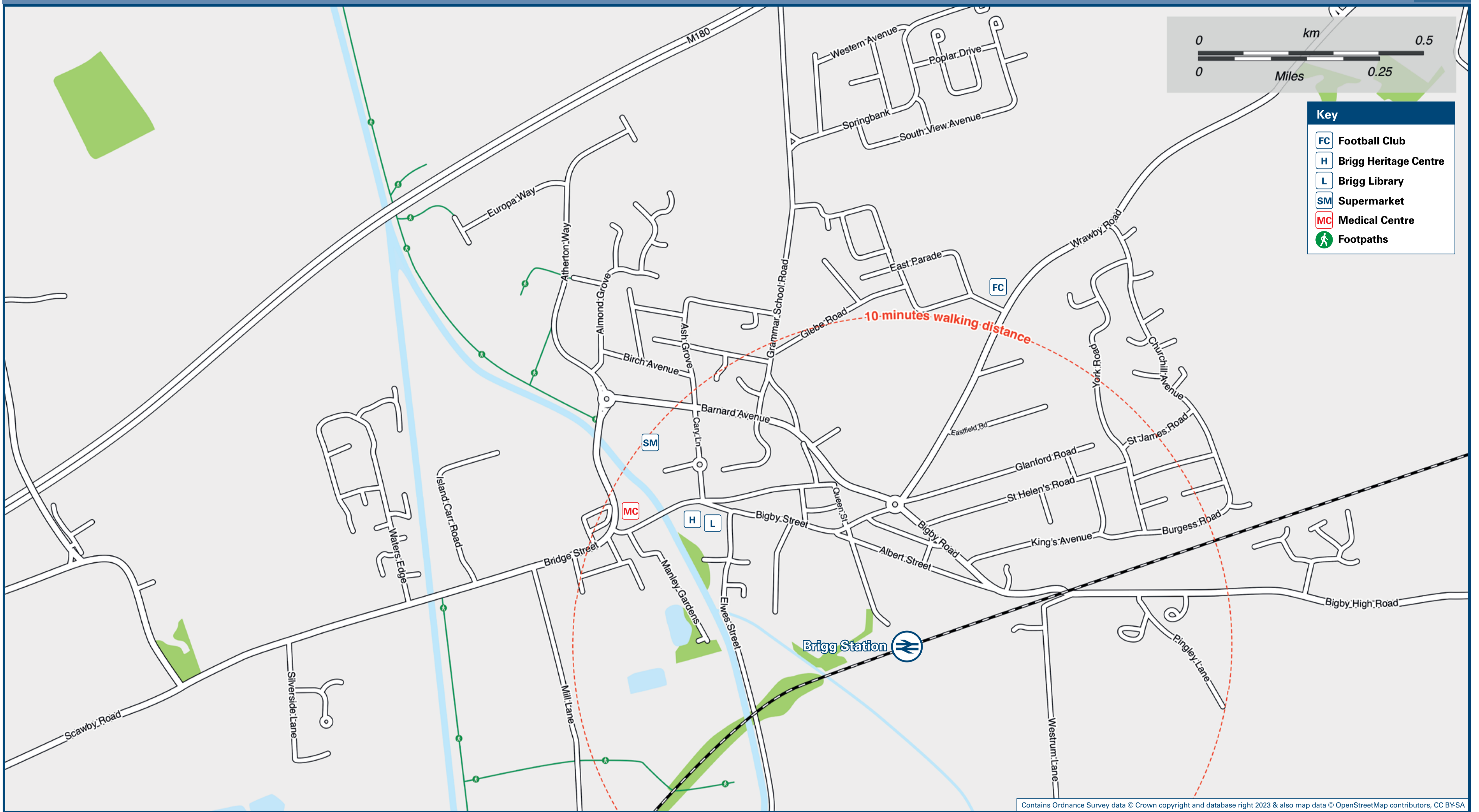




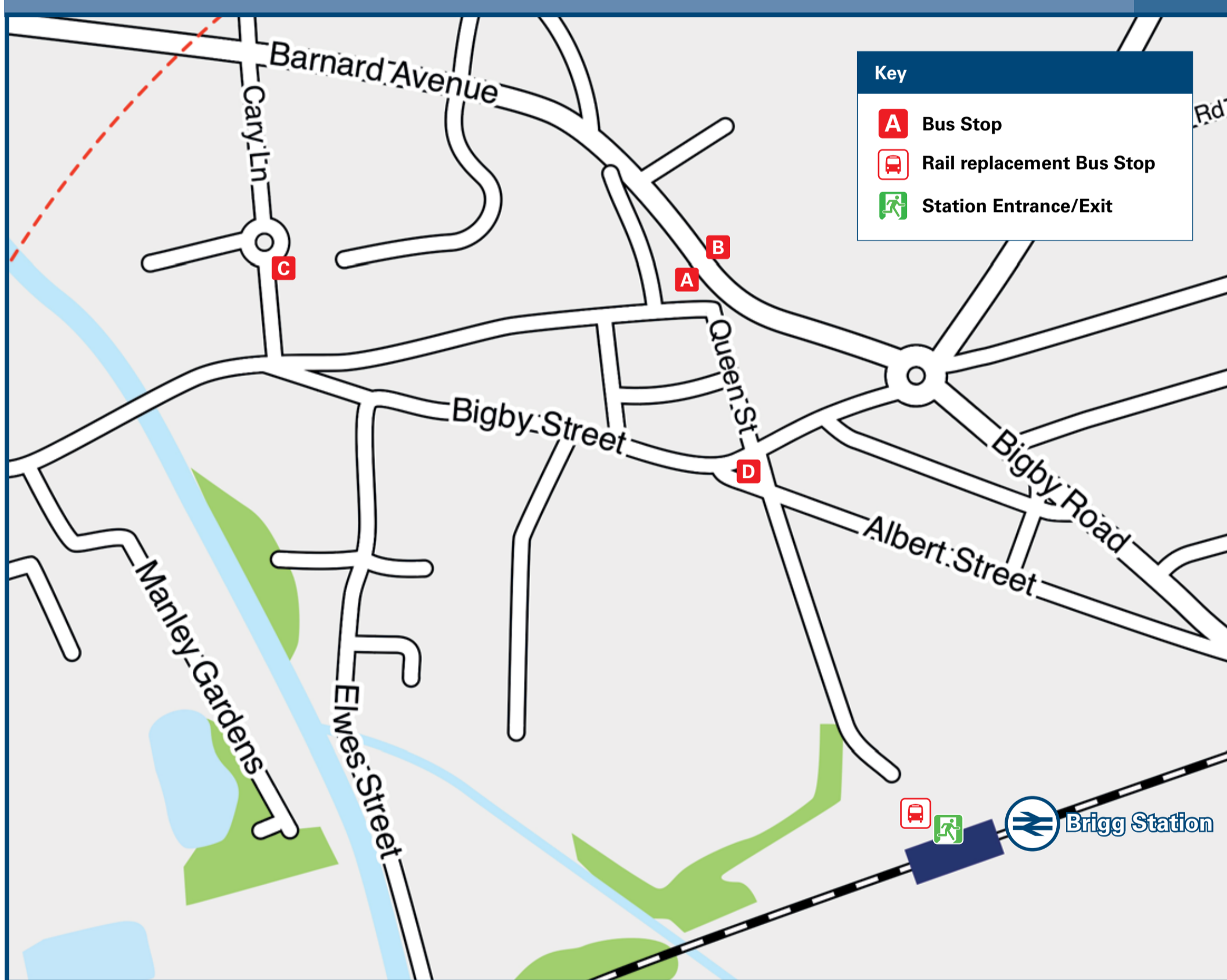
Brigg Station

Onward Travel Information

Local area map



Buses



Main destinations by bus

(Data correct at December 2023)

| DESTINATION | BUS ROUTES | BUS STOP |
|--------------------------------------|--------------|----------|
| Ashby | 4* | C, A |
| | 4, 4C~ | C, B |
| Barnetby-le-Wold | 96# | C |
| Bonby | 96# | C |
| Broughton | 4* | C, A |
| Cadney | 93** | D, C |
| Castlethorpe | 4* | C, A |
| Eisham | 96# | C |
| Hibaldstow | 94#, 4C~ | C |
| Howsham | 93** | D |
| Humberside Airport | 4, 4C~ | C, B |
| Kimington | 4, 4C~ | C, B |
| Kirton in Lindsey | 94#, 4, 4C~ | C |
| Lakeside (for Morrisons Supermarket) | 4, X4 | C |
| Old Brumby | 4* | C, A |
| Redbourne | 94#, 4C~ | C |
| Saxby All Saints | 96# | C |
| Scawby | 94#, 4C~, X4 | C |
| Scawby Brook | 94#, 4C~ | C |
| Scunthorpe | 4* | C, A |
| Worlaby | 96# | C |
| Wrawby | 4, 4C~ | C, B |
| | 96# | C |

Notes

JustGo North Lincs is an on-demand bus service operating for people travelling in North Lincolnshire. You book and pay directly from your smartphone through the JustGo North Lincs mobile app on iOS or Android. Alternatively, you can call 01482 692959 to make a booking. For more information, please visit <https://www.northlincs.gov.uk/transport-and-streets/justgo-north-lincs/>

Service 4 operates daily
For bus times please see bus stop timetables or contact Traveline

Direct trains operate to this destination from Brigg

* Service 4 departs from stop (C) Monday to Saturday daytimes and from stop (A) Monday to Saturday evenings and all day Sundays

Service 94 & 96 operate limited Mondays to Fridays services, only. No Saturday or Sunday services.

~ Service 4C operates on Saturdays, only.

** Service 93 operates on Tuesdays, Thursdays and Saturdays, only.

Taxis

Brigg station has no taxi rank or cab office. Advance booking is essential, please consider using the following local operators: (Inclusion of this number doesn't represent any endorsement of the taxi firm)

Brigg Taxis
01652 657575

Ian's Taxis
01652 600880

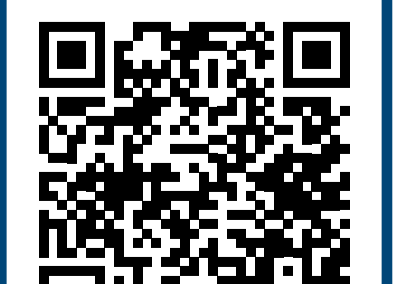
C.L Private Hire
01652 656 206

Further information about all onward travel

| | | | | |
|--|--|--|---|---|
| Local Cycle Info northlincs.gov.uk <small>For more information about cycle routes.</small> | National Cycle Info sustrans.org.uk <small>Sustrans is the UK's leading sustainable transport charity.</small> | Bus Times <small>See timetable displays at bus stops.</small> www.traveline.info 0871 200 22 33 <small>calls cost 12p per minute plus your phone company's access charge</small> | NextBuses Find the bus times for your stop. <small>Search for a bus stop by entering a postcode, street & town or a stop name & town.</small> | PlusBus plusbus.info <small>A discount price 'bus pass' that you buy with your train ticket. It gives you unlimited bus travel around your chosen town, on participating buses.</small> |
|--|--|--|---|---|

National Rail Enquiries

| | | | | | |
|---|---|--|--|--|---|
| Online nationalrail.co.uk | NRE App Free National Rail Enquiries app for iOS and Android | Social Media facebook.com/nationalrailenq @nationalrailenq | Alert Me <small>You can sign up to Alert Me messages on the National Rail Enquiries website where you can receive train and platform notifications directly to your smart phone.</small> nationalrail.co.uk/alertme | Contact Centre 03457 48 49 50 <small>Calls cost no more than calls to geographic numbers (01 or 02) and may be recorded.</small> | PlusBike nationalrail.co.uk/plusbike <small>For more information.</small> |
|---|---|--|--|--|---|



This poster shows details of popular destinations and main, frequent bus routes. Additional services may run, so please check with Traveline or see posters at local bus stops. Whilst considerable care has been taken to ensure the information contained on this poster is correct and accurate, National Rail cannot accept responsibility for any loss or inconvenience caused by any errors or omissions, or for loss, damage, injury or inconvenience relating to the cancellation, alteration, delay or diversion of a service. For any feedback, please e-mail comments@onwardtravelposters.com

Scan this code with your mobile for full station information.