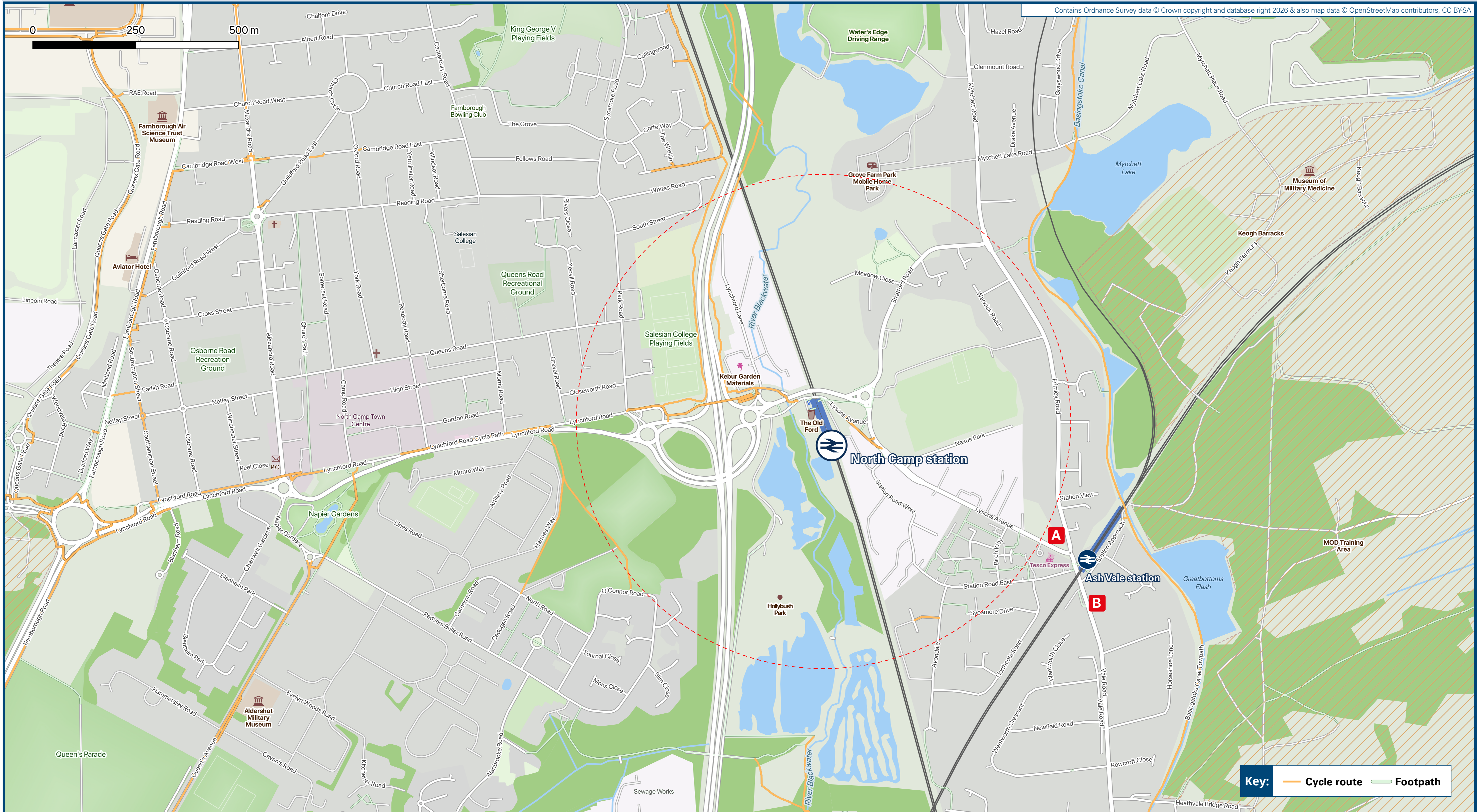




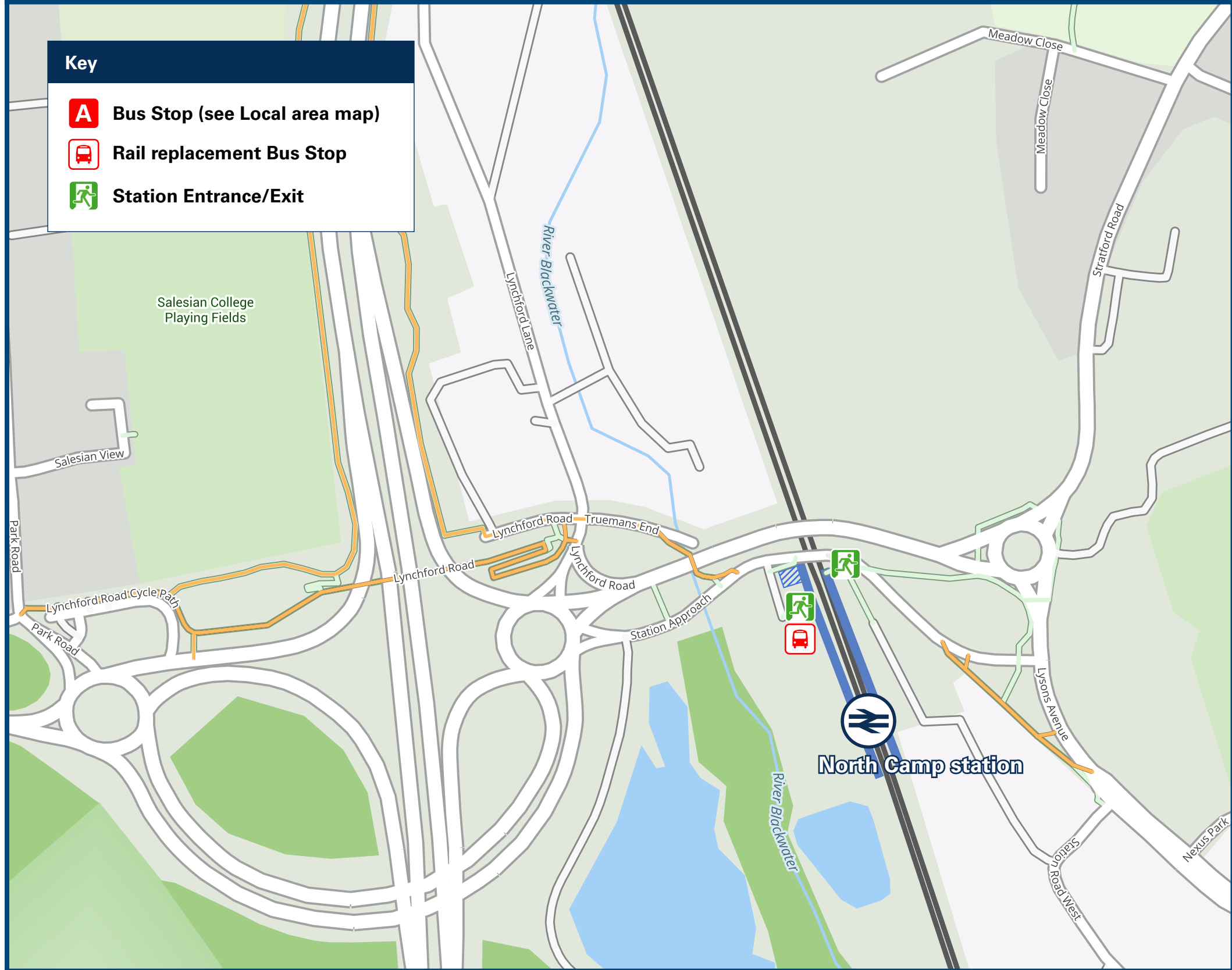
# North Camp Station

## Onward Travel Information

### Local area map



### Buses



Rail replacement buses/coaches from the bus stops outside the station building on Lynchford Road.

### Main destinations by bus

(Data correct at January 2026)

DESTINATION	BUS ROUTES	BUS STOP
Aldershot	3	Ash Vale Station B
Ash (The Greyhound)	3	Ash Vale Station B
Ash Vale Station	15 minutes walk from this station via Lysons Avenue.	
Camberley	3	Ash Vale Station A
Frimley	3	Ash Vale Station A
Frimley Green	3	Ash Vale Station A
Frimley Park Hospital	3	Ash Vale Station A
Mytchett	3	Ash Vale Station A

#### Notes

Bus route 3 operates a daily service.  
For bus times and days of operation please contact TraveLine on [www.traveline.info](http://www.traveline.info) or call: 0871 200 22 33

For connections to this destination, please change trains at Ash station or see how to get to Ash Vale station and take the train.

For connections to this destination, please see how to get to Ash Vale station and take the train.

### Taxis

North Camp station has no taxi rank or cab office. Advance booking is essential, please consider using the following local operators: (Inclusion of this number doesn't represent any endorsement of the taxi firm)

**A1 Rushmoor Taxis**  
01252 333 555

**Farnborough Taxi Online**  
01252 220 147

**A-Line Taxis**  
01252 650 000

### Further information about all onward travel

#### Local Cycle Info

[guildford.gov.uk](http://guildford.gov.uk)

For more information about cycle routes.

#### National Cycle Info

[walkwheelcycletrust.org.uk](http://walkwheelcycletrust.org.uk)

#### Bus Times

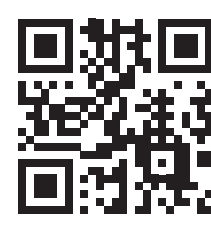
See timetable displays at bus stops.

[www.traveline.info](http://www.traveline.info)  
0871 200 22 33  
calls cost 15p per minute plus your phone company's access charge

#### PlusBus

[plusbus.info](http://plusbus.info)

PlusBus is a discount price 'bus pass' that you buy with your train ticket. It gives you unlimited bus travel around your chosen town, on participating buses. Visit [www.plusbus.info](http://www.plusbus.info)



### National Rail Enquiries

**Online**  
[nationalrail.co.uk](http://nationalrail.co.uk)

**NRE App**  
Free National Rail Enquiries app for iOS and Android

**Social Media**  
[facebook.com/nationalrailenq](https://www.facebook.com/nationalrailenq)  
[@nationalrailenq](https://twitter.com/nationalrailenq)

**Alert Me**  
You can sign up to Alert Me messages on the National Rail Enquiries website where you can receive train and platform notifications directly to your smart phone.  
[nationalrail.co.uk/alertme](http://nationalrail.co.uk/alertme)

**Contact Centre**  
03457 48 49 50  
Calls cost no more than calls to geographic numbers (01 or 02) and may be recorded.

**PlusBike**  
[nationalrail.co.uk/plusbike](http://nationalrail.co.uk/plusbike)  
For more information.

**GWR** | Great Western Railway



**National Rail**  
Britain's train companies working together



This poster shows details of popular destinations and main, frequent bus routes. Additional services may run, so please check with TraveLine or see posters at local bus stops. Whilst considerable care has been taken to ensure the information contained on this poster is correct and accurate, National Rail cannot accept responsibility for any loss or inconvenience caused by any errors or omissions, or for loss, damage, injury or inconvenience relating to the cancellation, alteration, delay or diversion of a service. For any feedback, please e-mail [comments@onwardtravelposters.com](mailto:comments@onwardtravelposters.com)

Scan this code with your mobile for full station information.