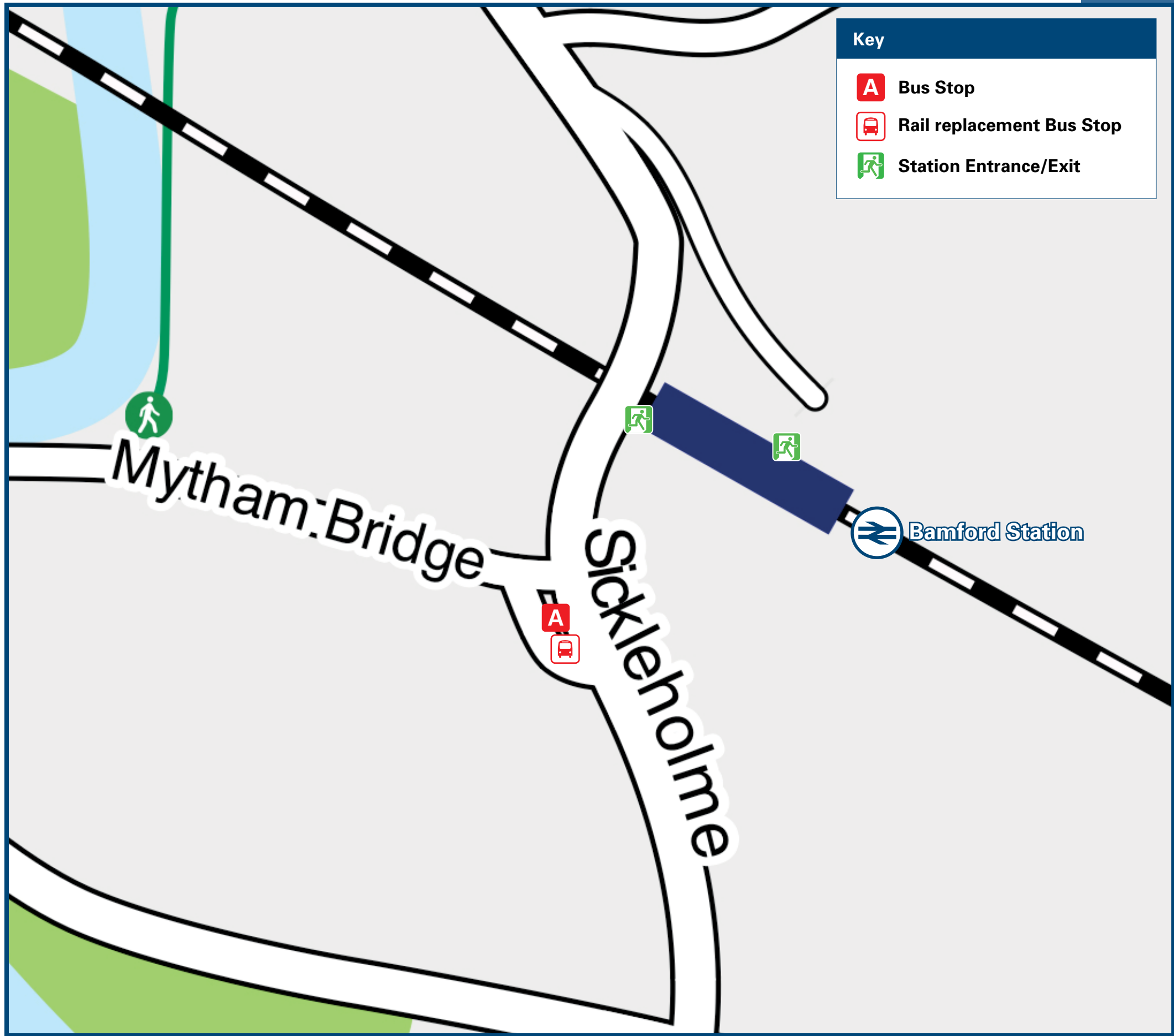




Bamford Station

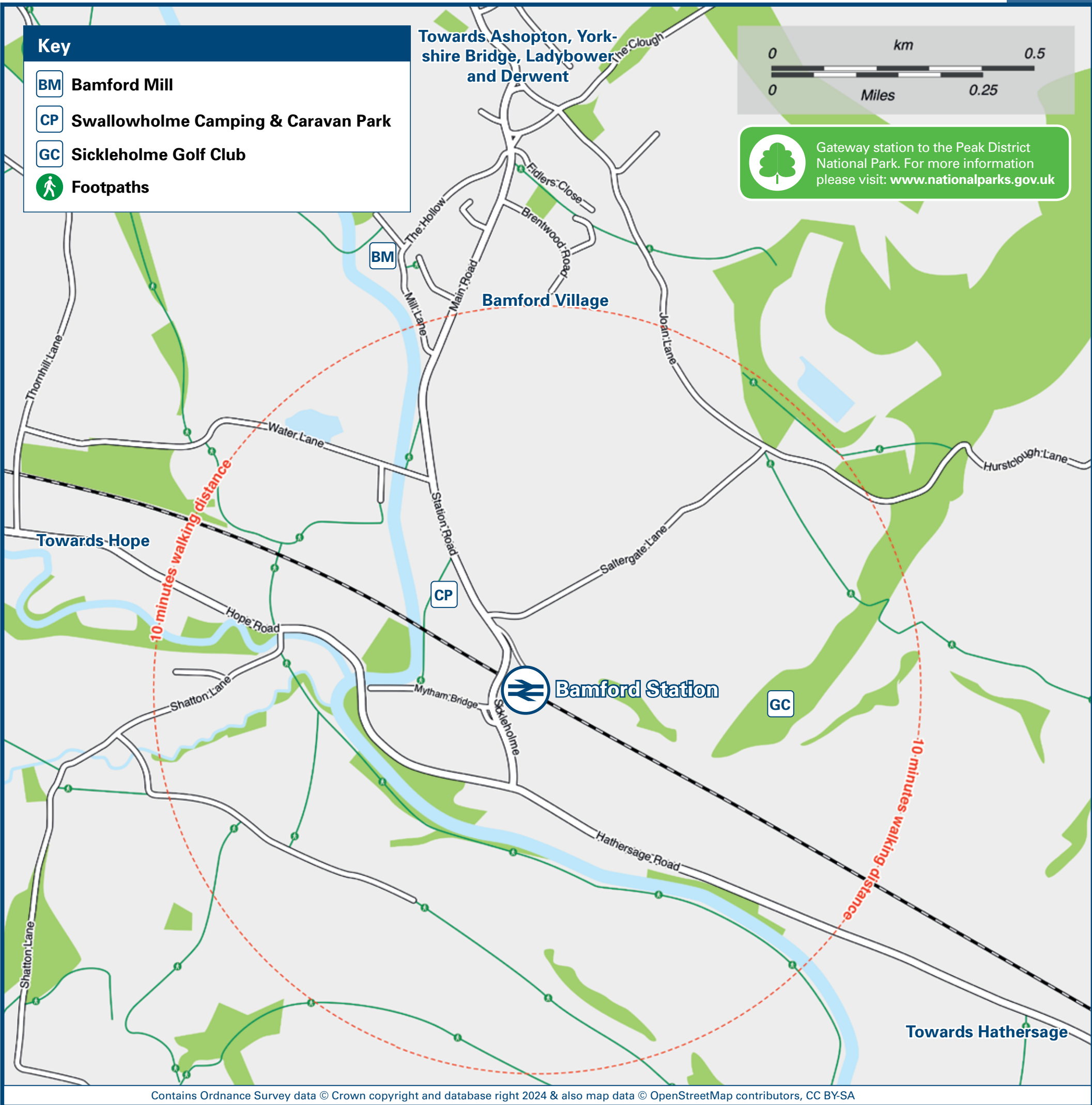
Onward Travel Information

Buses



Rail replacement transport pick up/drop off from the bus turning circle (stop {A}, 50 yards south of the railway station entrance on the bridge.

Local area map



Main destinations by bus

(Data correct at October 2024)



DESTINATION	BUS ROUTES	BUS STOP
Bakewell	257, 257a, 257b	A
Bamford village	257, 257a, 257b, 257c+	A
Baslow	257, 257b	A
Bradwell	271, 272	A
Brough	271, 272	A
Calver Sough	257, 257a	A
Castleton (Bus Station)	257c+, 271, 272	A
Cutthroat Bridge	257, 257a, 257b, 257c+	A
Derwent Dams, Fairholmes (Sundays only)	257c+	A
Ecclesall	271, 272	A
Eyam	257, 257a, 257b	A
Fox House	271, 272	A
Grindleford village	257, 257a	A

DESTINATION	BUS ROUTES	BUS STOP
Hathersage	257, 257a, 271, 272	A
Hope Valley College	257b#, 257c+, 271, 272	A
Hope village	257b, 257c+, 271, 272	A
Hunters Bar	271, 272	A
Ladybower Inn	257, 257a, 257b, 257c+	A
Rivelin	257, 257a, 257b, 257c+	A
Sheffield (Royal Hallamshire Hospital*)	257, 257a, 257b, 257c+, 271	A
Sheffield (Sheffield Childrens Hospital**)	257, 257a, 257b, 257c+, 271	A
Sheffield (Sheffield University**)	257, 257a, 257b, 257c+, 271	A

DESTINATION	BUS ROUTES	BUS STOP
Sheffield Interchange (for Sheffield Station)	257, 257a, 257b, 257c+, 271, 272	A
Stoney Middleton	257, 257a, 257b	A
Whirlow	271, 272	A
Yorkshire Bridge Inn (for Ladybower Dam)	257, 257a, 257b, 257c+	A

Notes

Bus route 257 operates hourly daytime Mondays to Saturdays.
Bus routes 257a, 257b and 271 operate limited journeys Mondays to Saturdays only.
Bus route 272 operates daily.
Peak Sightseer BLUE bus operates daily from May to October from Bamford to Blue John Cavern, Castleton, Chatsworth House and intermediate destinations.
For bus times please see bus stop timetables or contact Traveline on 0871 200 22 33 or Stagecoach for the Peak Sightseer Open Top Bus on 0345 241 8000.

☞ Direct trains operate to this destination from Bamford station
Bus route 257b calls on college days only.
* Alight bus at Beech Hill Road bus stop on the Glossop Road.
** Alight bus at Clarkson Street bus stop on the Glossop Road.
+ Bus route 257c operates Sundays and Bank Holidays only. Some journeys continue from Castleton bus station to Sparrowpit, Chapel-en-le-Frith, Whaley Bridge, New Mills, Hayfield and Glossop.
National Park Peak District National Park www.peakdistrict.gov.uk

Taxis

Bamford station has no taxi rank or cab office. Advance booking is essential, please consider using the following local operators: (Inclusion of this number doesn't represent any endorsement of the taxi firm)

Nice Taxis
07977 402 060

Penny's Private Hire
0791 710 771

Al's Private Hire
01298 815 345

Further information about all onward travel

Local Cycle Info www.derbyshire.gov.uk For more information about cycle routes.	National Cycle Info sustrans.org.uk Sustrans is the UK's leading sustainable transport charity.	Bus Times See timetable displays at bus stops. www.traveline.info 0871 200 22 33 calls cost 15p per minute plus your phone company's access charge	NextBuses Find the bus times for your stop. Search for a bus stop by entering a postcode, street & town or a stop name & town.	PlusBus plusbus.info A discount price 'bus pass' that you buy with your train ticket. It gives you unlimited bus travel around your chosen town, on participating buses.
---	---	---	--	--

National Rail Enquiries

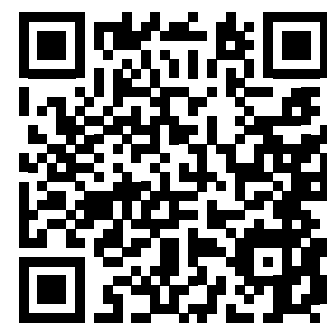
Online nationalrail.co.uk	NRE App Free National Rail Enquiries app for iOS and Android	Social Media facebook.com/nationalrailenq @nationalrailenq	Alert Me You can sign up to Alert Me messages on the National Rail Enquiries website where you can receive train and platform notifications directly to your smart phone. nationalrail.co.uk/alertme	Contact Centre 03457 48 49 50 Calls cost no more than calls to geographic numbers (01 or 02) and may be recorded.	PlusBike nationalrail.co.uk/plusbike For more information.
---	--	--	---	--	--



NORTHERN



National Rail
Britain's train companies working together



This poster shows details of popular destinations and main, frequent bus routes. Additional services may run, so please check with Traveline or see posters at local bus stops. Whilst considerable care has been taken to ensure the information contained on this poster is correct and accurate, National Rail cannot accept responsibility for any loss or inconvenience caused by any errors or omissions, or for loss, damage, injury or inconvenience relating to the cancellation, alteration, delay or diversion of a service. For any feedback, please e-mail comments@onwardtravelposters.com

Scan this code with your mobile for full station information.