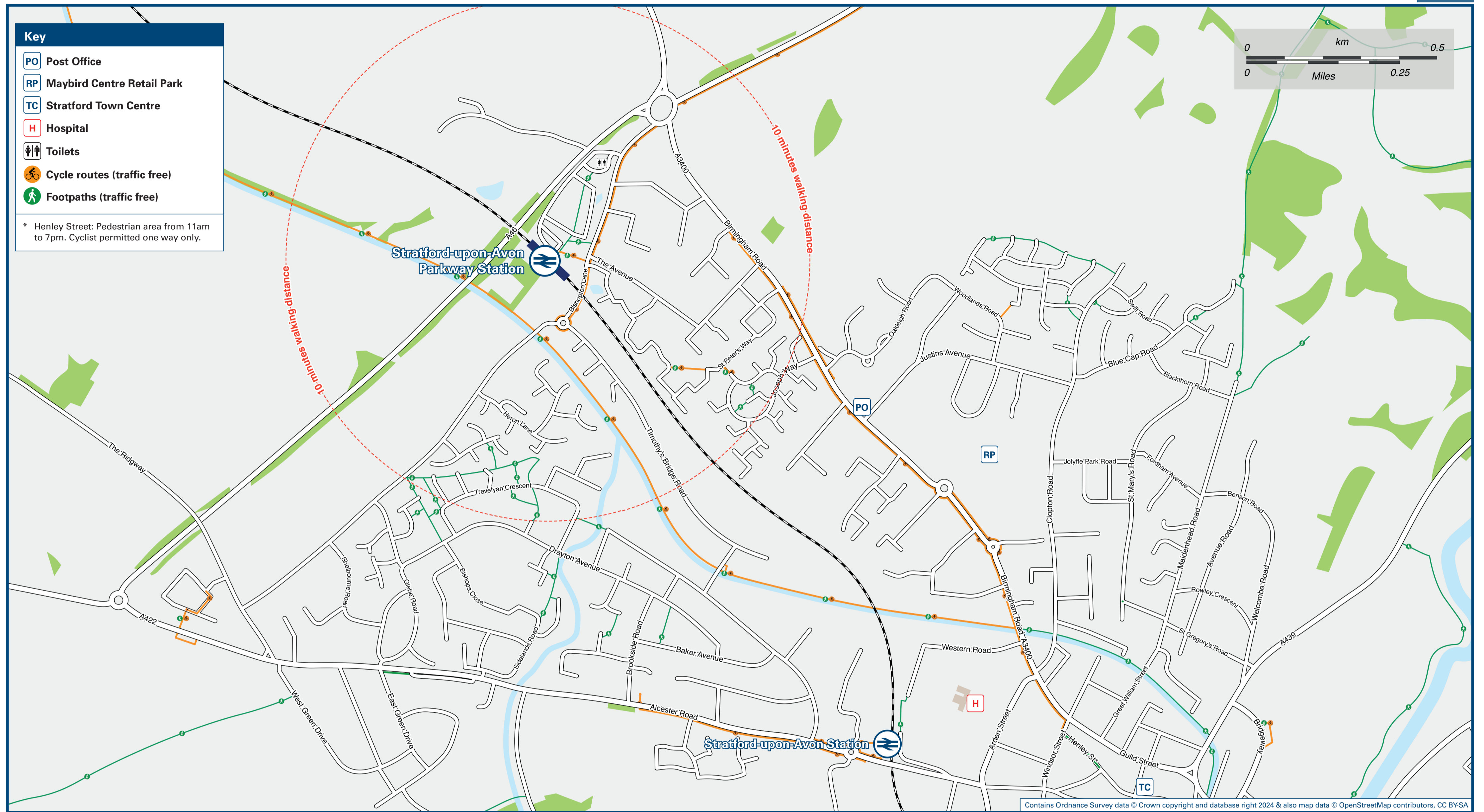




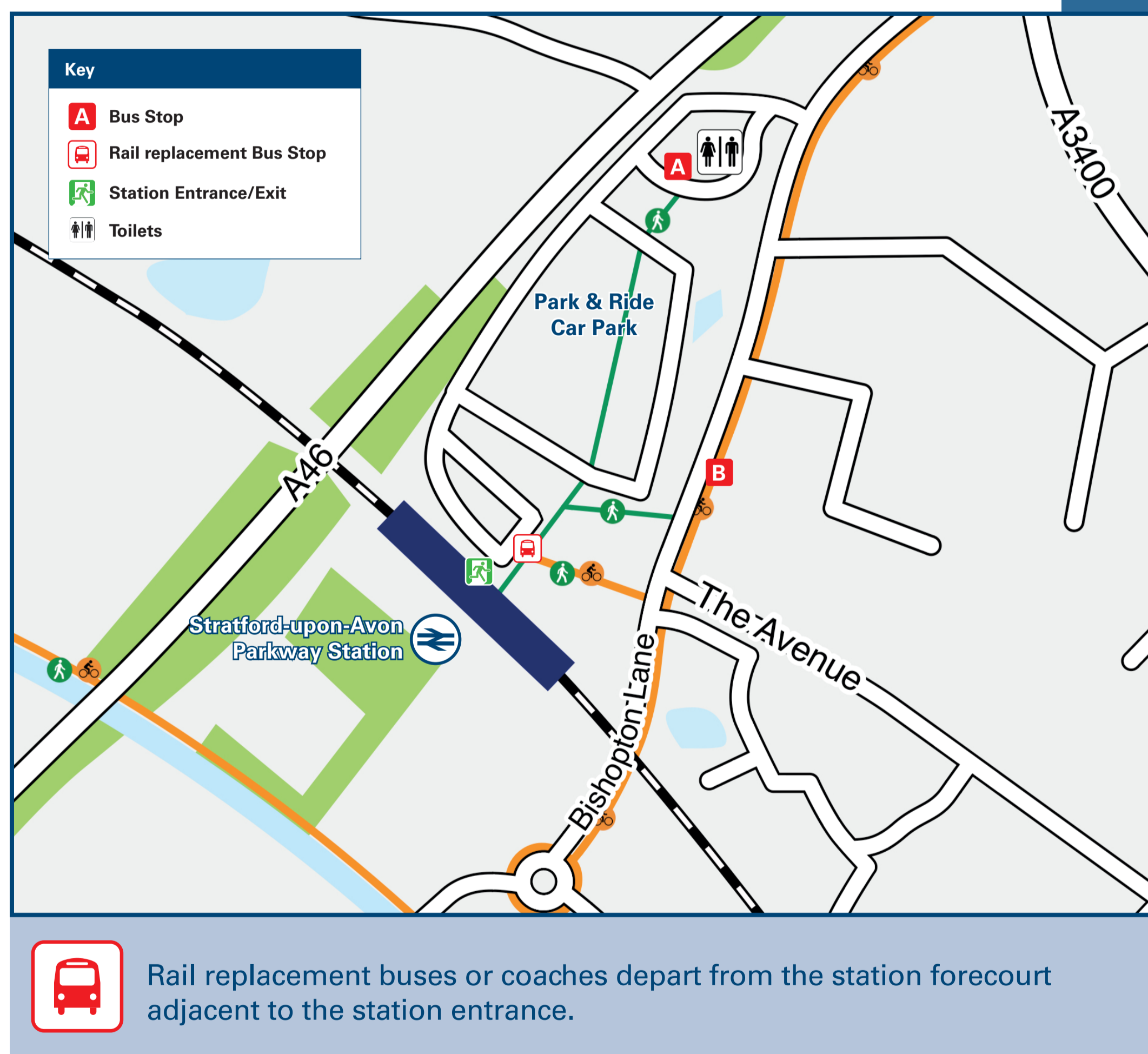
Stratford-upon-Avon Parkway Station

Onward Travel Information

Local area map



Buses



Main destinations by bus

(Data correct at July 2024)

DESTINATION	BUS ROUTES	BUS STOP
Stratford-upon-Avon (Mason's Road)	Park & Ride (PR)	A, B
Stratford-upon-Avon (Railway Station) @	Park & Ride (PR)	A, B
Stratford-upon-Avon (Timothy's Bridge Road)	Park & Ride (PR)	A, B
Stratford-upon-Avon (Town Centre, Wood Street) @	Park & Ride (PR)	A, B

Notes

- Bus route Park & Ride (PR) operates daily (Sunday and most Bank Holiday service operates March to September only).
- For bus times and further information contact Traveline on 0871 200 22 33 or Stagecoach Midlands (for bus route Park & Ride) call 0345 241 8000.
- @ Direct trains operate to Stratford-upon-Avon Station from where it's a short walk to the Town Centre.
- @ Bus connections available in the Town Centre at Wood Street to most local villages and towns.

Taxis

Stratford-upon-Avon Parkway station has neither a taxi rank nor a cab office. Advance booking is essential, please consider using the following local operators: (Inclusion of this number doesn't represent any endorsement of the taxi firm)

Shakespeare Taxis
01789 266 100

Ideal Taxis
01789 290 444

Warwickshire Taxis
01789 508 898

Further information about all onward travel

Local Cycle Info warwickshire.gov.uk For more information about cycle routes.	National Cycle Info sustrans.org.uk Sustrans is the UK's leading sustainable transport charity.	Bus Times See timetable displays at bus stops. www.traveline.info 0871 200 22 33 <small>calls cost 13p per minute plus your phone company's access charge</small>	NextBuses Find the bus times for your stop. Search for a bus stop by entering a postcode, street & town or a stop name & town.	PlusBus plusbus.info A discount price 'bus pass' that you buy with your train ticket. It gives you unlimited bus travel around your chosen town, on participating buses.
---	---	--	--	---

National Rail Enquiries

Online nationalrail.co.uk	NRE App Free National Rail Enquiries app for iOS and Android	Social Media facebook.com/nationalrailenq @nationalrailenq	Alert Me You can sign up to Alert Me messages on the National Rail Enquiries website where you can receive train and platform notifications directly to your smart phone. nationalrail.co.uk/alertme	Contact Centre 03457 48 49 50 Calls cost no more than calls to geographic numbers (01 or 02) and may be recorded.	PlusBike nationalrail.co.uk/plusbike For more information.
---	--	--	---	--	--



This poster shows details of popular destinations and main, frequent bus routes. Additional services may run, so please check with Traveline or see posters at local bus stops. Whilst considerable care has been taken to ensure the information contained on this poster is correct and accurate, National Rail cannot accept responsibility for any loss or inconvenience caused by any errors or omissions, or for loss, damage, injury or inconvenience relating to the cancellation, alteration, delay or diversion of a service. For any feedback, please e-mail comments@onwardtravelposters.com

Scan this code with your mobile for full station information.