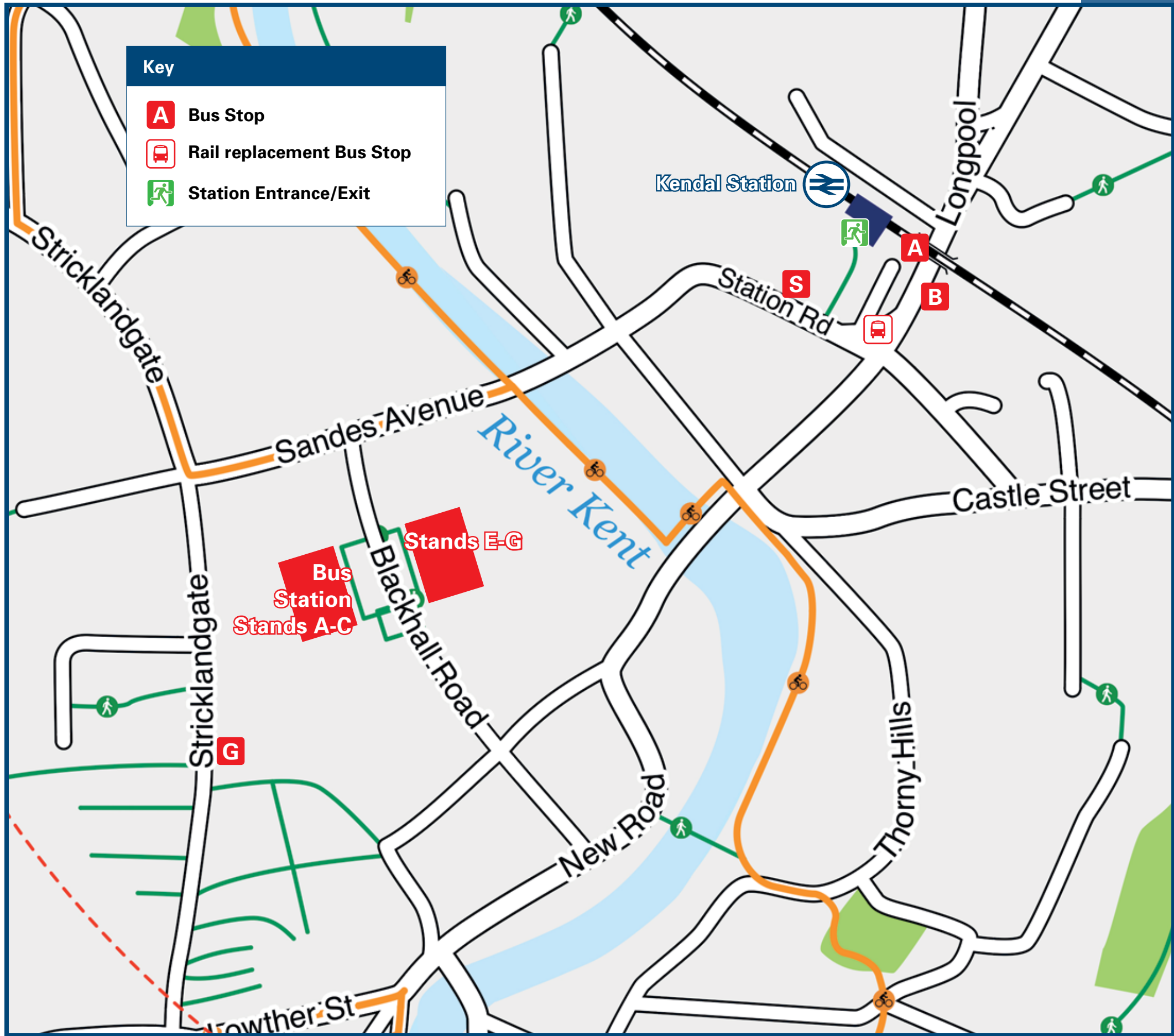




# Kendal Station

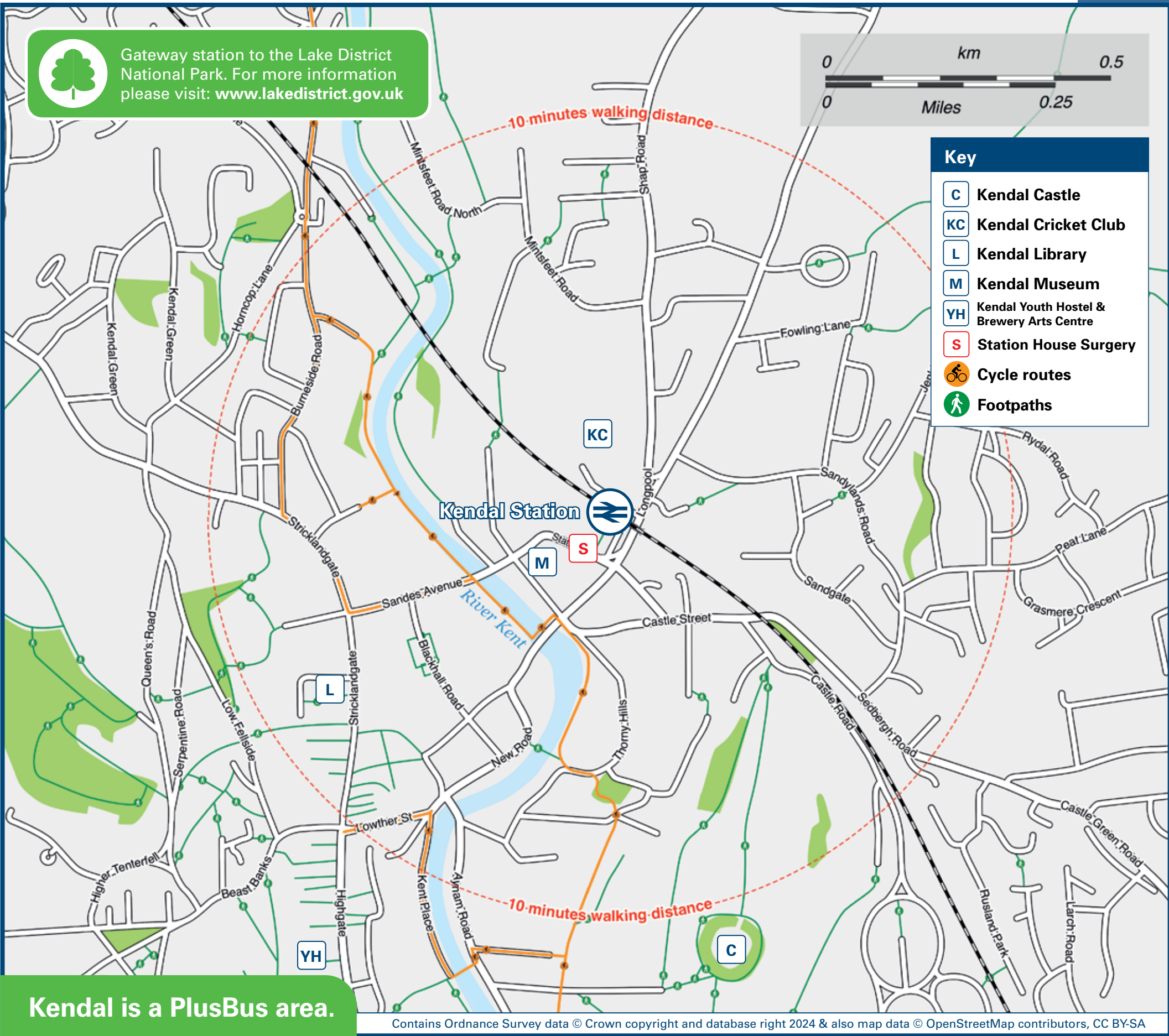
## Onward Travel Information

### Buses



Rail replacement buses will Pick up / Drop off point is on Station Road by the Peugeot Garage.

### Local area map



Kendal is a PlusBus area.



**PlusBus** is a discount price 'bus pass' that you buy with your train ticket. It gives you unlimited bus travel around your chosen town, on participating buses. Visit [www.plusbus.info](http://www.plusbus.info)

### Main destinations by bus

(Data correct at December 2024)



DESTINATION	BUS ROUTES	BUS STOP
Ambleside	505~, 516~, 555, 599~	Bus Station
Arnside	552~	Bus Station
Barrow	6, X6	Bus Station
Bolton-le-Sands	555, 755	Bus Station
Burnside	45	Bus Station
Burton-in-Kendal	555	Bus Station
Carnforth	555, 755	Bus Station
Endmoor	567	Bus Station
Grange-over-Sands	530~, X6	Bus Station
Grayrigg	106~, 570~, 571~	A
Haverthwaite (for Lakeside & Haverthwaite Railway)	6, X6	Bus Station
Heversham	552~, 555	Bus Station
High Newton	X6	Bus Station
Holme	555	Bus Station
Kendal (Castle Grove)	42	Bus Station
Kendal College	555, 567, 755, X6	Bus Station
Kendal (Hallgarth)	44	G
Kendal (Larch Grove)	42A	Bus Station
Kendal (Sandylands)	40#, 43, 43A	A
Kendal (Valley Drive)	40#	A
	42, 42A	Bus Station

DESTINATION	BUS ROUTES	BUS STOP
Kendal (Vicarage Drive)	46	G
Kendal Town Centre	10 - 15 minutes walk (see maps) 40#, 43, 43A	B
Kentrigg	45	Bus Station
Keswick	555	Bus Station
Kirkby Lonsdale	567	Bus Station
Leasgill	555	Bus Station
Levens Hall	552~, 555, 755	Bus Station
Lindale	530~, X6	Bus Station
Lupton	567	Bus Station
Milnthorpe	552~, 555, 755	Bus Station
Natland	552~	Bus Station
Newby Bridge	6, X6	Bus Station
Oxenholme	40# 41, 41A, 563~, S1*	A
Sandside	552~	Bus Station
Sedbergh	S1*	Bus Station
Sedgwick	552~	Bus Station
Shap	106~, 570~	A
Staveley	6, 555	Bus Station
Tebay	106~, 570~, 571~	A

DESTINATION	BUS ROUTES	BUS STOP
Ulverston	6, X6	Bus Station
Westmorland Hospital	40# 41, 41A, 567	A
Windermere	6, 505~, 508~, 516~, 555, 599~, 755	Bus Station

#### Notes

● **PlusBus** destination, please see below for details.  
Bus routes 6, 555, 599, 755 and X6 run daily.  
Bus routes 41, 41A, 42, 42A, 43, 43A, 44, 45 and 46 run Mondays to Saturdays only.  
Bus routes 516 and 530 run limited services Mondays to Fridays, only.  
For bus times and days of operation please see bus timetables at the Bus Station or at Bus Stops or contact Traveline  
⚡ Direct trains operate to this destination from this station.  
# Bus route 40 runs a Sunday service only.  
\* Bus route S1 runs a limited service Wednesdays and Saturdays only.  
~ Bus routes 106, 508, 552, 570, 571, 599 and 755 run low frequency services.  
National Park The Lake District National Park;  
[www.lakedistrict.gov.uk/](http://www.lakedistrict.gov.uk/)

### Taxis

Kendal station has no taxi rank or cab office. Advance booking is essential, please consider using the following local operators: (Inclusion of this number doesn't represent any endorsement of the taxi firm)

**Lakeside Taxis**  
01539 239 239

**Blue Star Taxis**  
01539 723 670

**Theo's Taxis**  
07747 055 674

### Further information about all onward travel

Local Cycle Info	National Cycle Info	Bus Times	NextBuses	PlusBus
<a href="http://sustrans.org.uk">sustrans.org.uk</a> For more information about cycle routes.	<a href="http://sustrans.org.uk">sustrans.org.uk</a> Sustrans is the UK's leading sustainable transport charity.	See timetable displays at bus stops. <a href="http://www.traveline.info">www.traveline.info</a> 0871 200 22 33 calls cost 15p per minute plus your phone company's access charge	Find the bus times for your stop. Search for a bus stop by entering a postcode, street & town or a stop name & town.	<a href="http://plusbus.info">plusbus.info</a> A discount price 'bus pass' that you buy with your train ticket. It gives you unlimited bus travel around your chosen town, on participating buses.

### National Rail Enquiries

Online	NRE App	Social Media	Alert Me	Contact Centre	PlusBike
<a href="http://nationalrail.co.uk">nationalrail.co.uk</a>	Free National Rail Enquiries app for iOS and Android	<a href="https://www.facebook.com/nationalrailenq">facebook.com/nationalrailenq</a> <a href="https://twitter.com/nationalrailenq">@nationalrailenq</a>	You can sign up to Alert Me messages on the National Rail Enquiries website where you can receive train and platform notifications directly to your smart phone. <a href="http://nationalrail.co.uk/alertme">nationalrail.co.uk/alertme</a>	03457 48 49 50 Calls cost no more than calls to geographic numbers (01 or 02) and may be recorded.	<a href="http://nationalrail.co.uk/plusbike">nationalrail.co.uk/plusbike</a> For more information.



This poster shows details of popular destinations and main, frequent bus routes. Additional services may run, so please check with Traveline or see posters at local bus stops. Whilst considerable care has been taken to ensure the information contained on this poster is correct and accurate, National Rail cannot accept responsibility for any loss or inconvenience caused by any errors or omissions, or for loss, damage, injury or inconvenience relating to the cancellation, alteration, delay or diversion of a service. For any feedback, please e-mail [comments@onwardtravelposters.com](mailto:comments@onwardtravelposters.com)

Scan this code with your mobile for full station information.