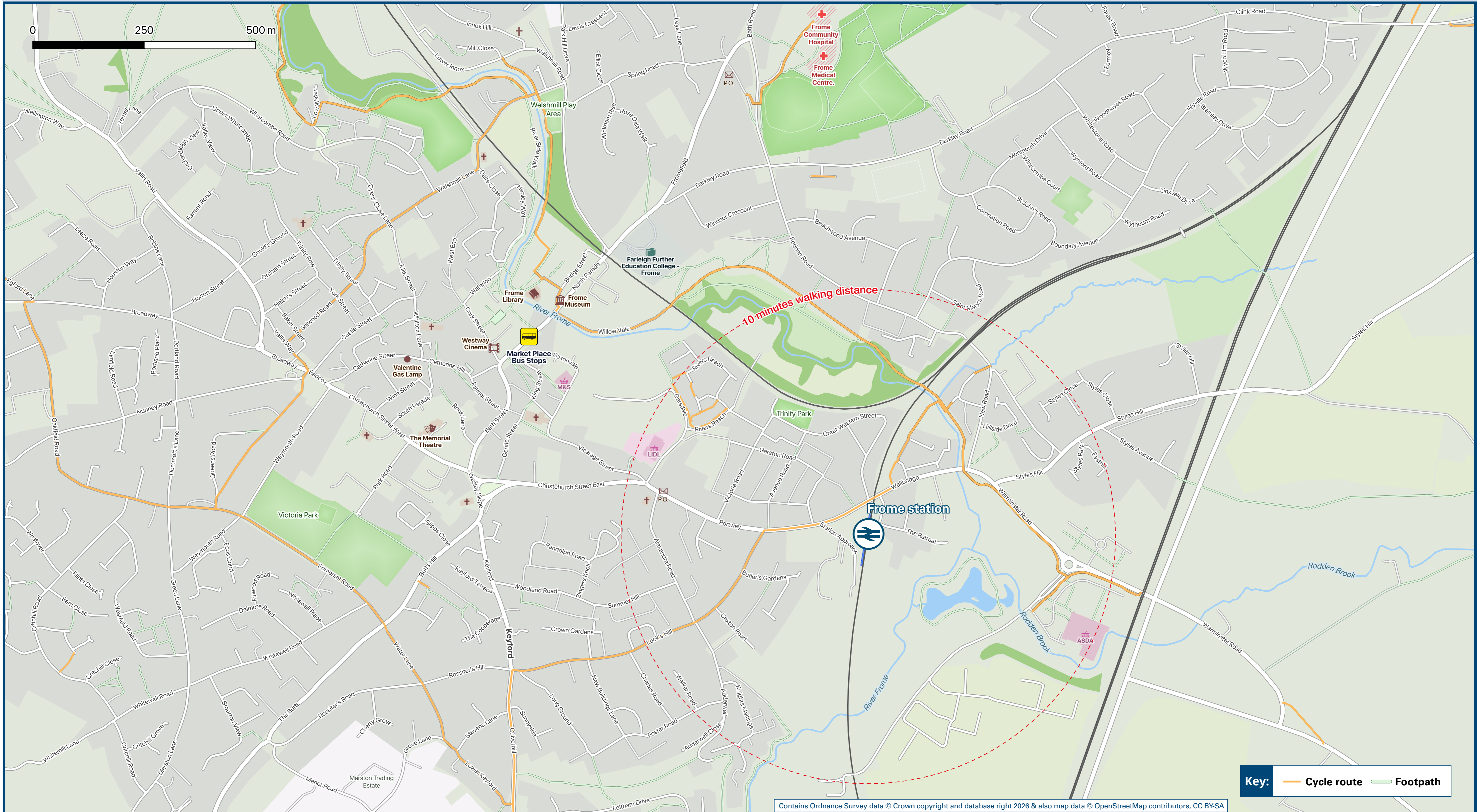




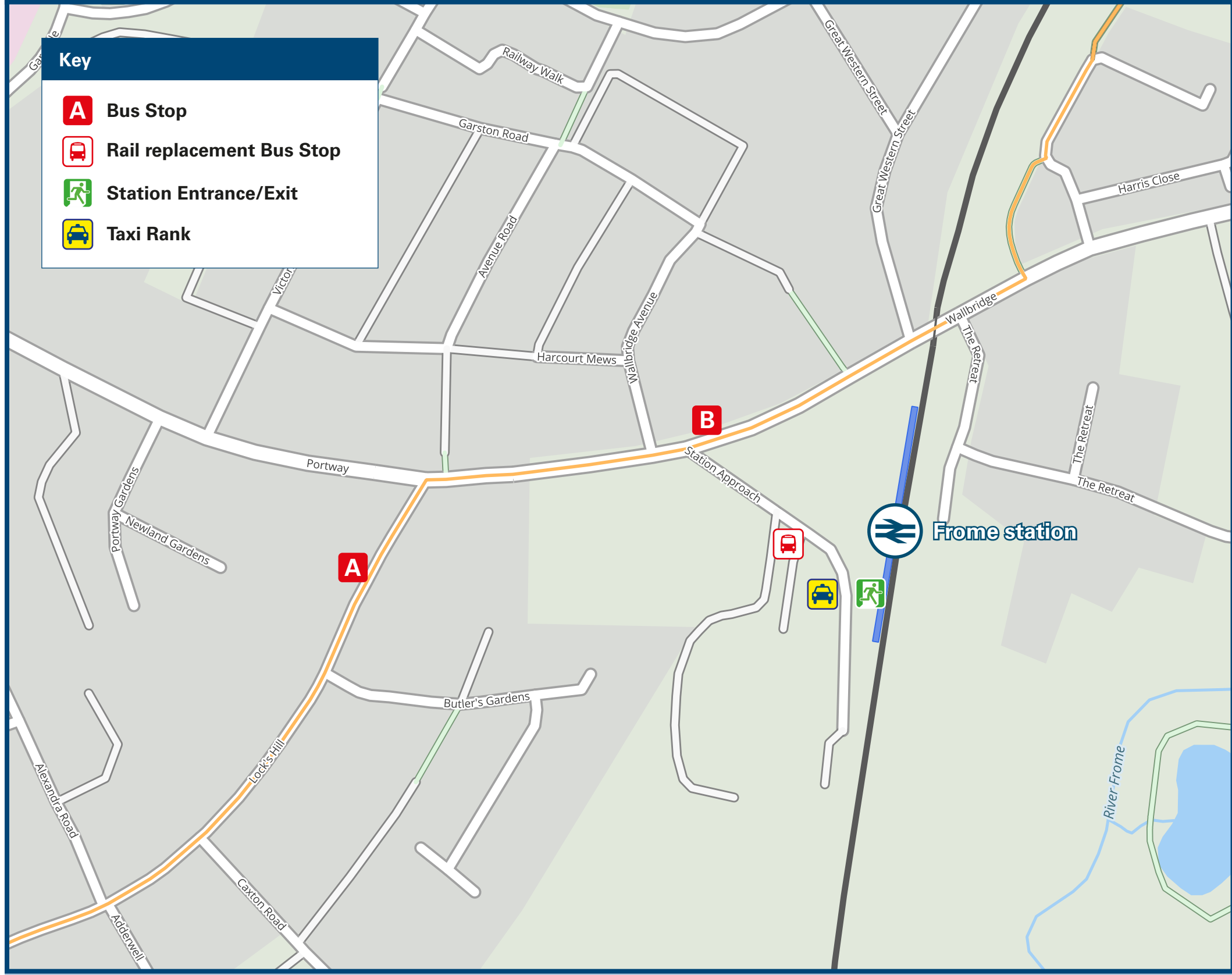
Frome Station

Onward Travel Information

Local area map



Buses and Taxis



Rail replacement buses/coaches will depart from the front of the station.

Main destinations by bus

(Data correct at January 2026)



DESTINATION	BUS ROUTES	BUS STOP
Bath	D2, D2x#	M P
Beckington	D2, D2x#, X34	M P
Center Parks (Longleat Forest)	Taxi is advised	
Chapmanslade	47#	M P
Coleford	184*	M P
Corsley/Corsley Heath	24#	M B
Cranmore (for East Somerset Railway)	162*	M P
Dilton Marsh	47#	M P
Frome ((Market Place))	15 - 20 minutes walk (see Local area map)	
Frome (Berkeley Down)	30	A
Frome (Stonebridge)	30	A
Great Elm	184*	M P
Highbury	184*	M P
Holcombe	184*	M P
Keyford	30	A
Longleat House & Safari Park	Taxi is advised	
Mells	184*	M P
Midsomer Norton	184*	M P
Norton St Philip	D2	M P
Nunney (for Nunney Castle)	162*	M P
Oldford	D2, X34	M P
Rode	D2, X34	M P
Shepton Mallet	162*	M P
Southwick	X34	M P
Stoke St Michael	162*	M P
Stratton-on-the-Fosse	184*	M P
Trowbridge	X34	M P
Warminster	24#	M B
Westbury	47#	M P
Woolverton	D2, D2x#	M P

Notes

Bus routes D2 & X34 operate daily services.
Bus route 30 operates a Mondays to Saturdays service, only. No Sunday service.
For bus times and days of operation please contact Traveline on www.traveline.info or call: 0871 200 22 33
• Direct trains operate to this destination from this Station.
* Bus routes 162 & 184 operate on Mondays to Fridays, only. No Saturday or Sunday services.
Bus routes 24, 47 & D2X operate limited daytime services on Mondays to Saturdays, only. No evenings or Sundays services.

Taxis

Frome station is served by a taxi rank or a cab office. Check availability before travelling, and pre-book if necessary. Please consider using the following local operators: (Inclusion of this number doesn't represent any endorsement of the taxi firm)

ABC Taxis
01373 452 211

Tony's Cabs
01373 464 444

Anthony Taxis
07423 060 115

Further information about all onward travel

Local Cycle Info	National Cycle Info	Bus Times	PlusBus
mendip.gov.uk For more information about cycle routes.	walkwheelcycletrust.org.uk	See timetable displays at bus stops. www.traveline.info 0871 200 22 33 calls cost 15p per minute plus your phone company's access charge	plusbus.info PlusBus is a discount price 'bus pass' that you buy with your train ticket. It gives you unlimited bus travel around your chosen town, on participating buses. Visit www.plusbus.info



National Rail Enquiries

Online	NRE App	Social Media	Alert Me	Contact Centre	PlusBike
nationalrail.co.uk	Free National Rail Enquiries app for iOS and Android	facebook.com/nationalrailenq @nationalrailenq	You can sign up to Alert Me messages on the National Rail Enquiries website where you can receive train and platform notifications directly to your smart phone. nationalrail.co.uk/alertme	03457 48 49 50 Calls cost no more than calls to geographic numbers (01 or 02) and may be recorded.	nationalrail.co.uk/plusbike For more information.



National Rail
Britain's train companies working together



This poster shows details of popular destinations and main, frequent bus routes. Additional services may run, so please check with Traveline or see posters at local bus stops. Whilst considerable care has been taken to ensure the information contained on this poster is correct and accurate, National Rail cannot accept responsibility for any loss or inconvenience caused by any errors or omissions, or for loss, damage, injury or inconvenience relating to the cancellation, alteration, delay or diversion of a service. For any feedback, please e-mail comments@onwardtravelposters.com

Scan this code with your mobile for full station information.