



# Southampton Airport Parkway Station

## Onward Travel Information

### Buses and Taxis



Key

A

Bus Stop

Bus

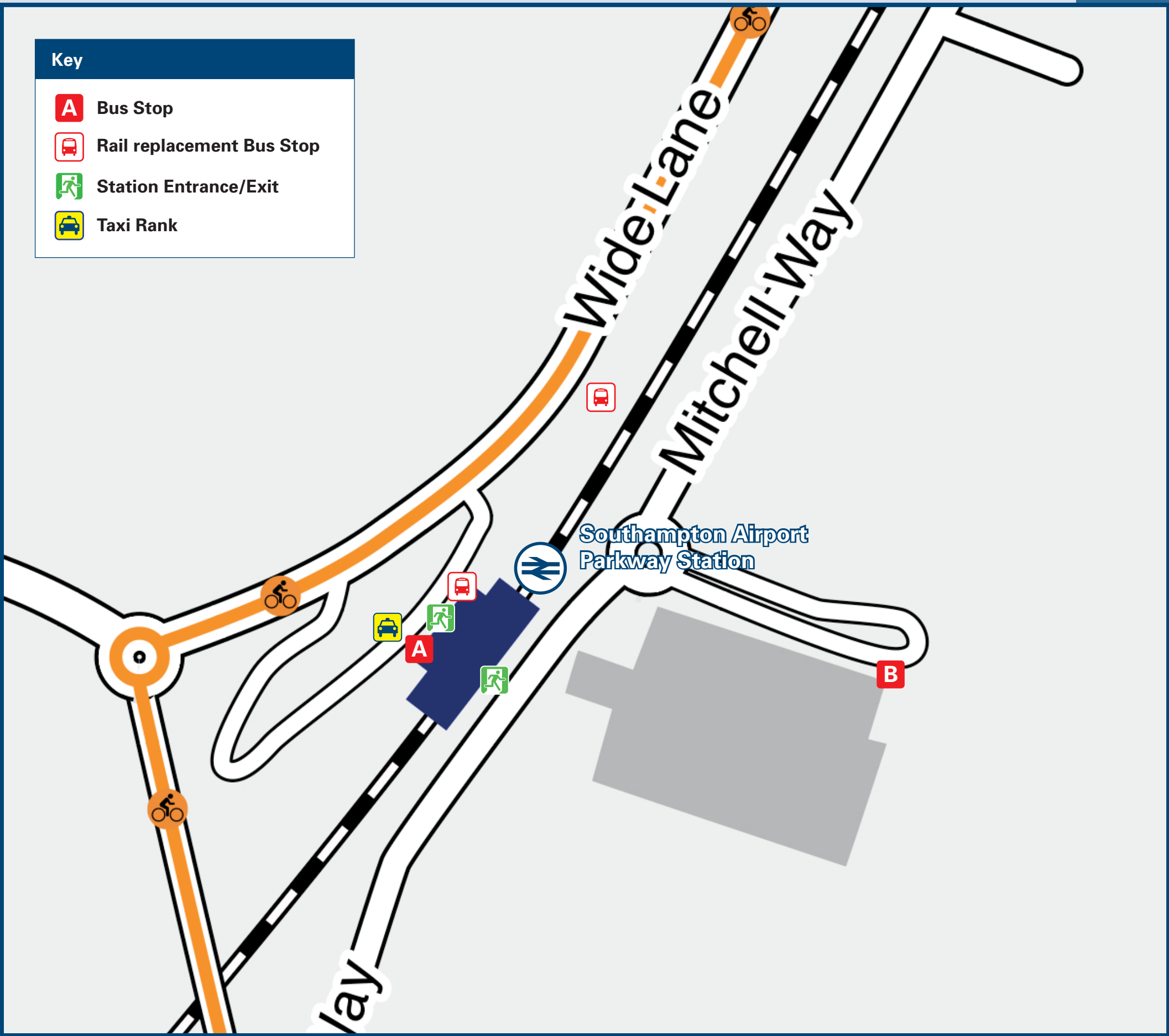
Rail replacement Bus Stop

Entrance

Station Entrance/Exit

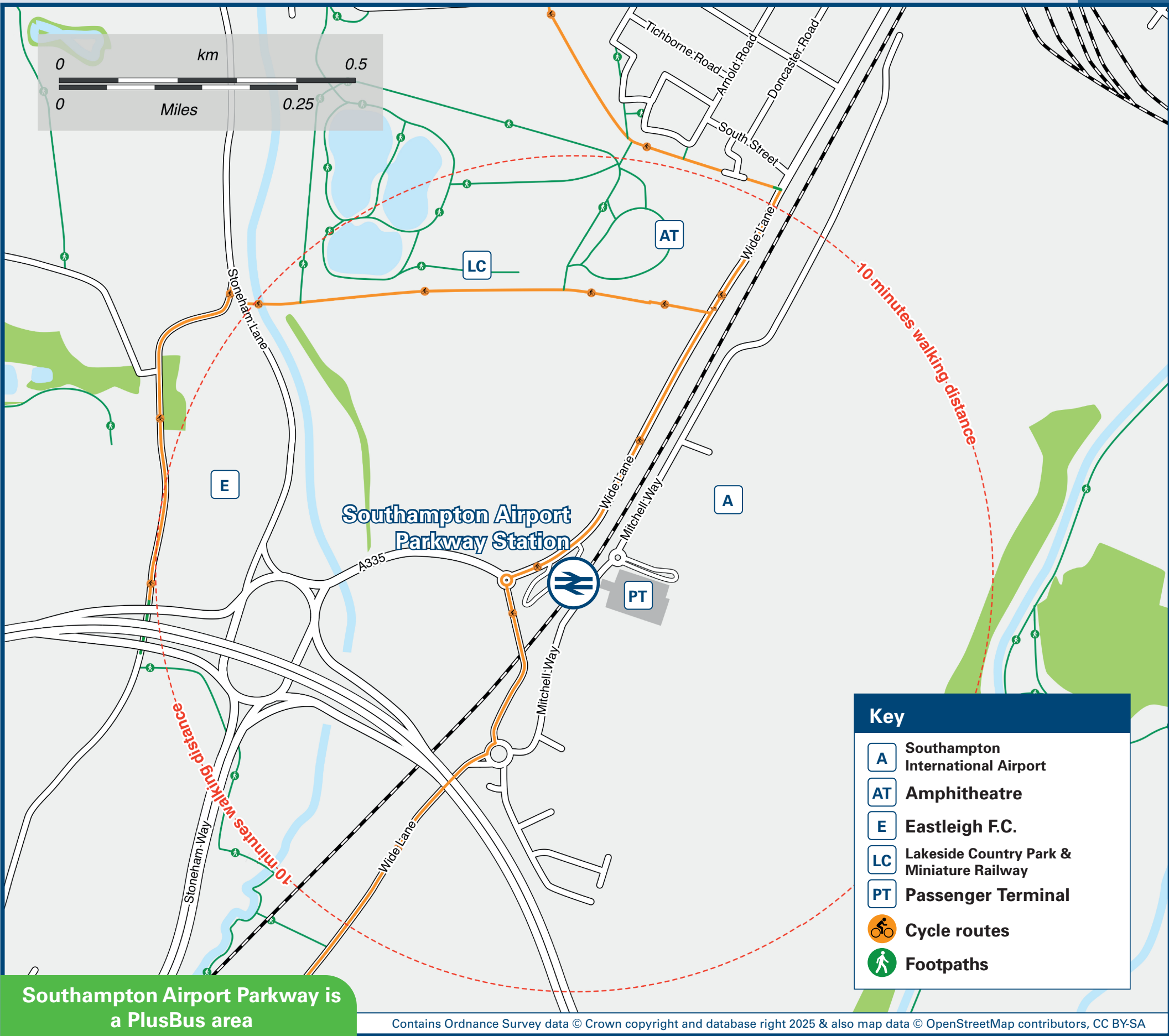
Taxi

Taxi Rank



Rail replacement bus through journeys: Station forecourt bus stop off Wide Lane (A335). Terminating journeys: Car Park at Eastleigh end, off Wide Lane (A335)

### Local area map



Southampton Airport Parkway is a PlusBus area



Add **PlusBus** to your train ticket—now available on eTicket from leading rail ticketing apps—for unlimited bus travel in the **PlusBus** zone in your destination town or city. Visit [www.plusbus.info](http://www.plusbus.info)

### Main destinations by bus

(Data correct at November 2025)



DESTINATION	BUS ROUTES	BUS STOP	DESTINATION	BUS ROUTES	BUS STOP	DESTINATION	BUS ROUTES	BUS STOP
Bassett Green (Green Wood Court)	U8#	A	Moorgreen Hospital (for Utilita Bowl Cricket Ground)	24	A	University of Southampton (Wessex Lane Halls)	U1C*	B
Chilworth Village	U8#	A	Portswood (Broadway)	U1C*	B	West End (High Street & Shops)	24	A
Eastleigh (Barton Peveril College)	24	A	Southampton City Centre	U1C*	B			
Eastleigh (Town Centre)	24, U1E~	A	Southampton (Eastern Docks/National Oceanography Centre)	U1C*	B			
Hedge End Retail Park (Superstores)	24	A	Southampton Science Park	U8#	A			
Hedge End (Town Centre)	24	A	Townhill Park (Swaythling Road)	24	A			
Mansbridge (Octavia Road)	24	A	University of Southampton (Highfield Interchange)	U1C*	B			

**Notes**

- **PlusBus** destination, please see below for details. Bus route 24 operates Mondays to Saturdays. For bus times and days of operation please contact Traveline on [www.traveline.info](http://www.traveline.info) or call: 0871 200 22 33
- ☞ Direct trains operate to this destination.
- \* Bus route U1C operates daily, Mondays to Sundays
- ~ Bus route U1E operates limited evening journeys daily to Eastleigh only.
- # Bus route U8 operates an hourly daytime service on Mondays to Fridays, only. No evenings, Saturdays or Sundays service.

### Taxis

Southampton Airport Parkway is a major station where taxis are usually available on a rank. Advance booking is not normally necessary, unless arriving early in the morning or late at night. Operators who may accept bookings include: (Inclusion of this number doesn't represent any endorsement of the taxi firm)

Eastleigh Cab Co  
023 8065 1111

Apple Taxis  
023 8062 0620

Eastleigh Radio Taxis  
07884 421 299

### Further information about all onward travel

Local Cycle Info	National Cycle Info	Bus Times	PlusBus
<a href="http://eastleigh.gov.uk">eastleigh.gov.uk</a> For more information about cycle routes.	<a href="http://walkwheelcycletrust.org.uk">walkwheelcycletrust.org.uk</a>	See timetable displays at bus stops.  <a href="http://www.traveline.info">www.traveline.info</a> 0871 200 22 33 calls cost 15p per minute plus your phone company's access charge	 <a href="http://plusbus.info">plusbus.info</a> PlusBus is a discount price 'bus pass' that you buy with your train ticket. It gives you unlimited bus travel around your chosen town, on participating buses. Visit <a href="http://www.plusbus.info">www.plusbus.info</a>



### National Rail Enquiries

Online	NRE App	Social Media	Alert Me	Contact Centre	PlusBike
<a href="http://nationalrail.co.uk">nationalrail.co.uk</a>	Free National Rail Enquiries app for iOS and Android	<a href="https://facebook.com/nationalrailenq">facebook.com/nationalrailenq</a> @nationalrailenq	You can sign up to Alert Me messages on the National Rail Enquiries website where you can receive train and platform notifications directly to your smart phone. <a href="http://nationalrail.co.uk/alertme">nationalrail.co.uk/alertme</a>	<b>03457 48 49 50</b> Calls cost no more than calls to geographic numbers (01 or 02) and may be recorded.	<a href="http://nationalrail.co.uk/plusbike">nationalrail.co.uk/plusbike</a> For more information.



**National Rail**  
Britain's train companies working together

