



Congleton Station

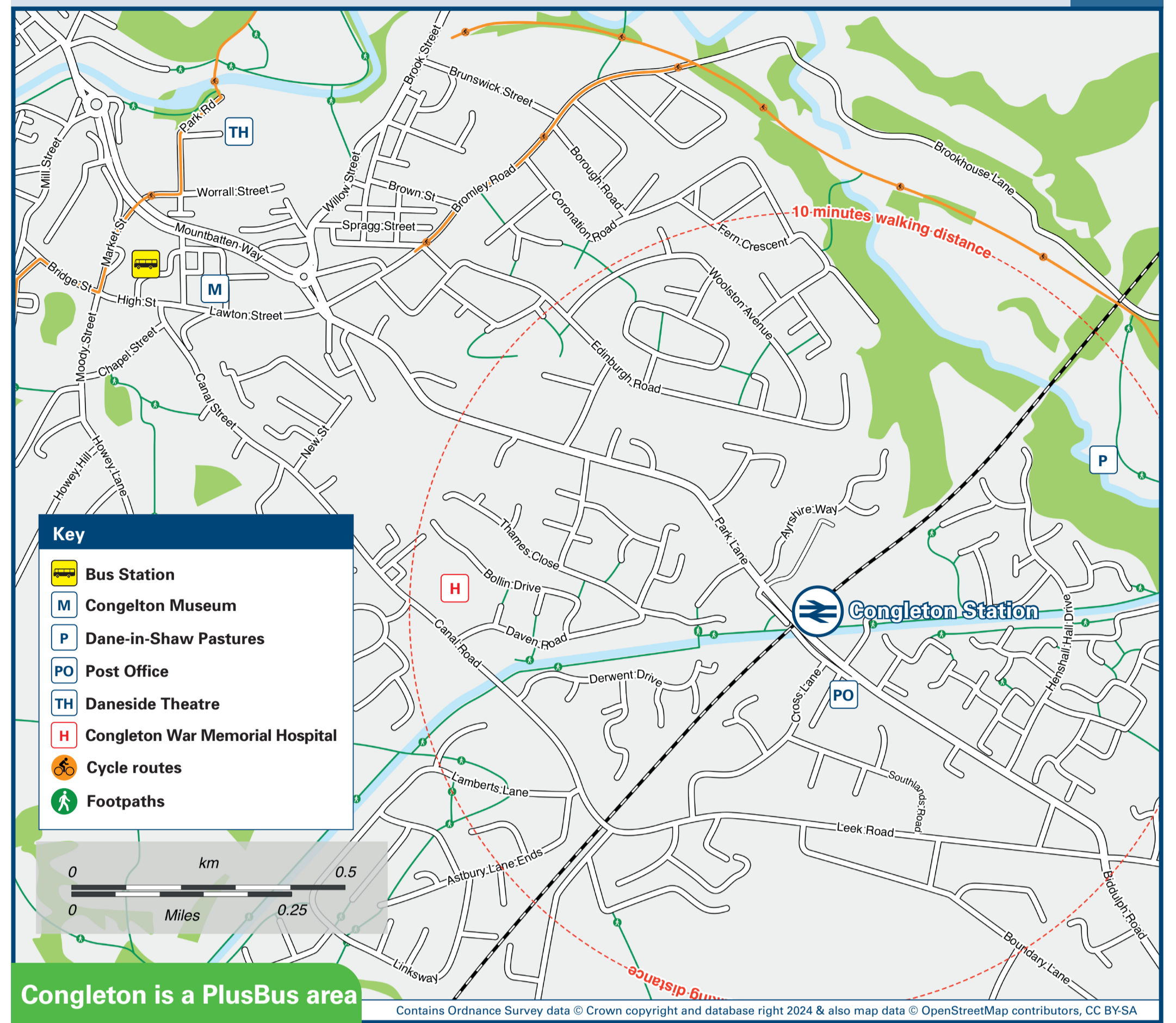
Onward Travel Information

Buses



Rail replacement buses will Pick Up / Drop Off at the bus stops {A} and {B} on Park Lane at the top of the station approach road (station side for Stoke and opposite side for Stockport).

Local area map



Add **PlusBus** to your train ticket—now available on eTicket from leading rail ticketing apps—for unlimited bus travel in the **PlusBus** zone in your destination town or city. Visit www.plusbus.info

Main destinations by bus

(Data correct at January 2026)

DESTINATION	BUS ROUTES	BUS STOP	DESTINATION	BUS ROUTES	BUS STOP	DESTINATION	BUS ROUTES	BUS STOP
● Biddulph Town Centre	94	A	● Congleton War Memorial Hospital	91	C	● Wolstanton	94	A
● Biddulph Grange Gardens (National Trust)*	94	A	● Hightown	91	C	Notes ● PlusBus destination, please see below for details. Bus routes 91 & 94 run Mondays to Saturdays, only. No Sunday services. Buses operate to many other local destinations from Congleton Bus Station in the Town Centre (Market Street) For bus times and days of operation please contact Traveline on www.traveline.info or call: 0871 200 22 33 Plusbus destination, please see below for details. Plusbus tickets are valid only within the Congleton Plusbus zone (including Biddulph) on D&G Buses. ● Direct trains operate to this destination from this Station. * For Biddulph Grange (National Trust) or Biddulph Country Park, please exit from the bus at the St Lawrence's Church bus stop. Biddulph Grange gardens and Country Park are (approximately) a 5-10 minutes walk up Congleton Road and Grange Road.		
● Braddocks Hay	94	A	● Knypersley	94	A			
● Chell	94	A	● Mossley	94	A			
● Congleton (Bus Station)	94	B	● Newcastle Under Lyme	94	A			
		20 minutes walk (approximately) from this Station	● Tunstall	94	A			

Taxis Congleton Station has no taxi rank or cab office. Advance booking is essential, please consider using the following local operators: (Inclusion of this number doesn't represent any endorsement of the taxi firm)	B-Tax of Congleton 01260 278 522	Fareways 01260 298 008	Andycab 07517 397 225
--	--	----------------------------------	---------------------------------

Further information about all onward travel

Local Cycle Info cheshireeast.gov.uk <small>For more information about cycle routes.</small>	National Cycle Info walkwheelcycletrust.org.uk	Bus Times <small>See timetable displays at bus stops.</small> www.traveline.info 0871 200 22 33 <small>calls cost 15p per minute plus your phone company's access charge</small>	PlusBus plusbus.info <small>PlusBus is a discount price 'bus pass' that you buy with your train ticket. It gives you unlimited bus travel around your chosen town, on participating buses. Visit www.plusbus.info</small>
--	--	---	--

National Rail Enquiries

Online nationalrail.co.uk	NRE App Free National Rail Enquiries app for iOS and Android	Social Media facebook.com/nationalrailenq @nationalrailenq	Alert Me You can sign up to Alert Me messages on the National Rail Enquiries website where you can receive train and platform notifications directly to your smart phone. nationalrail.co.uk/alertme	Contact Centre 03457 48 49 50 <small>Calls cost no more than calls to geographic numbers (01 or 02) and may be recorded.</small>	PlusBike nationalrail.co.uk/plusbike <small>For more information.</small>
---	--	---	---	---	---



This poster shows details of popular destinations and main, frequent bus routes. Additional services may run, so please check with Traveline or see posters at local bus stops. Whilst considerable care has been taken to ensure the information contained on this poster is correct and accurate, National Rail cannot accept responsibility for any loss or inconvenience caused by any errors or omissions, or for loss, damage, injury or inconvenience relating to the cancellation, alteration, delay or diversion of a service. For any feedback, please e-mail comments@onwardtravelposters.com

Scan this code with your mobile for full station information.