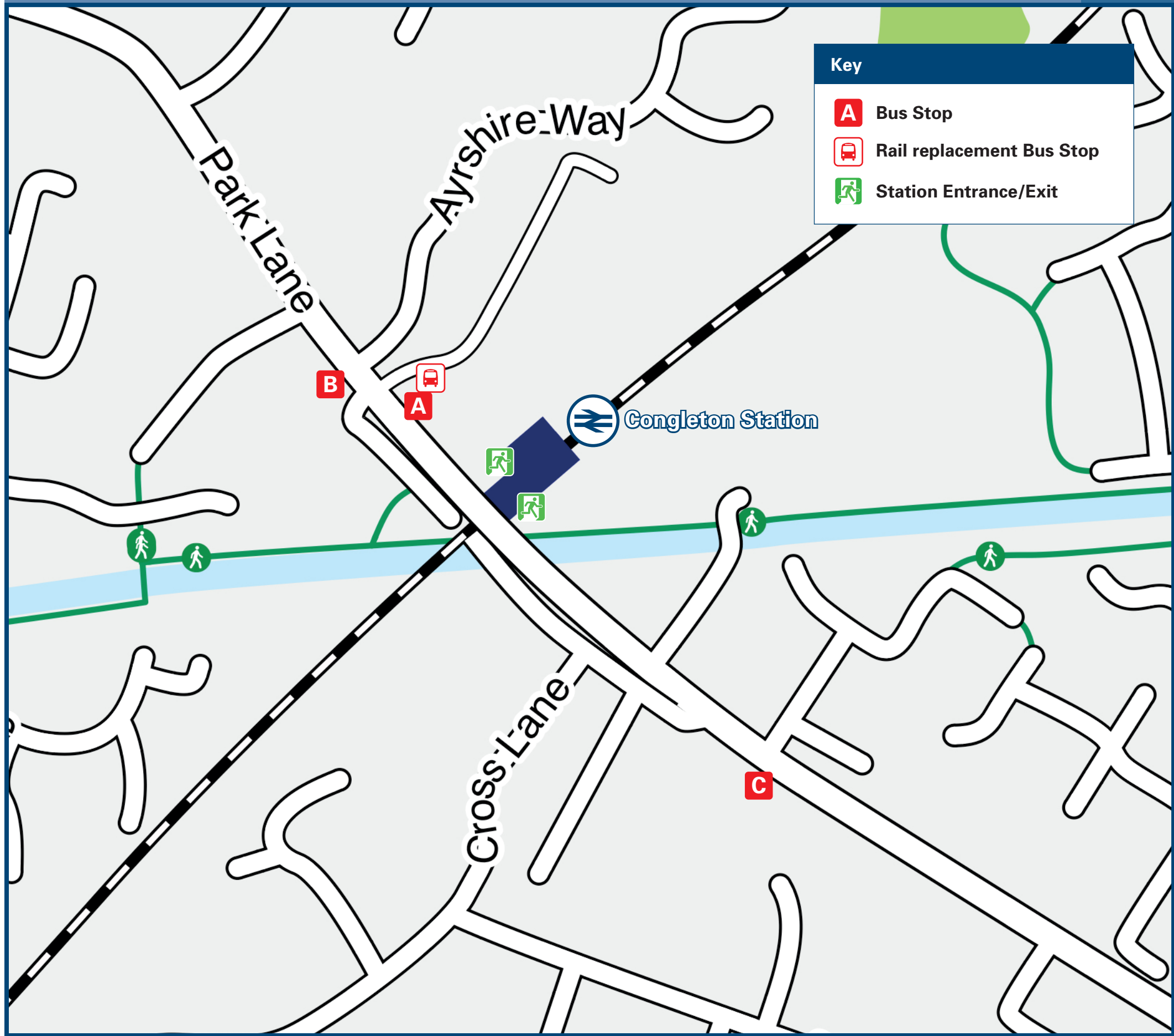




Congleton Station

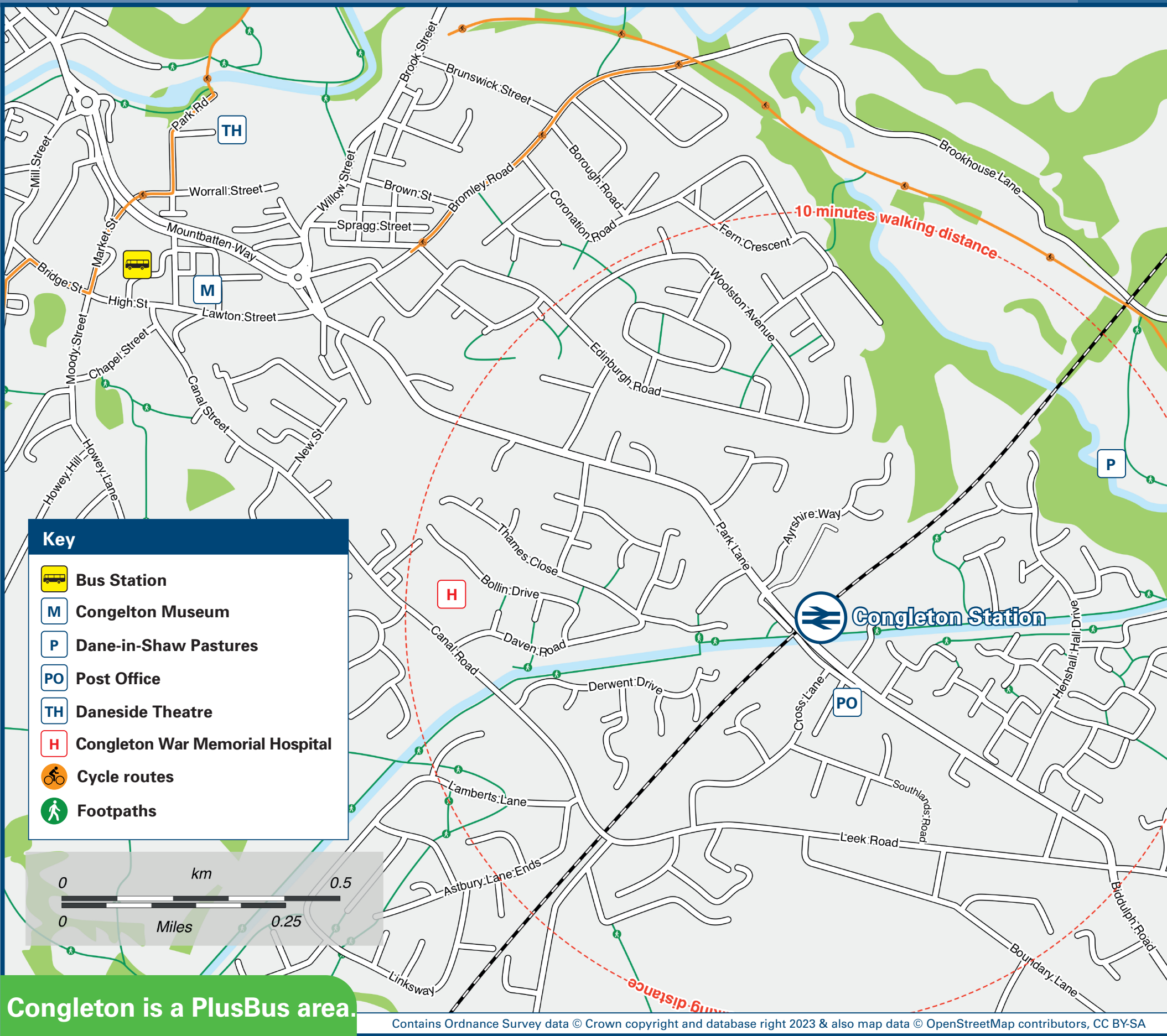
Onward Travel Information

Buses



Rail replacement buses will pick-up/drop-off at the bus stop (A) at the top of Station Approach Road.

Local area map



Congleton is a PlusBus area.



PlusBus is a discount price 'bus pass' that you buy with your train ticket. It gives you unlimited bus travel around your chosen town, on participating buses. Visit www.plusbus.info

Main destinations by bus

(Data correct at November 2023)



DESTINATION	BUS ROUTES	BUS STOP
● Biddulph Town Centre	94	A
● Biddulph Grange Gardens (National Trust)*	94	A
● Bradwell	94	A
● Chell	94	A
20 minutes walk (approximately) from this Station		
● Congleton (Bus Station)	94	B
	91	C

DESTINATION	BUS ROUTES	BUS STOP
● Congleton War Memorial Hospital	91	C
● Hightown	91	C
● Knypersley	94	A
● Mossley	94	A
	91	C
● Newcastle Under Lyme	94	A
● Tunstall	94	A

DESTINATION	BUS ROUTES	BUS STOP
Notes		
● PlusBus destination, please see below for details. Bus route 91 runs Mondays to Saturdays, only. No Sunday service. Bus route 94 runs Mondays to Fridays, only. No Saturday or Sunday service. Buses operate to many other local destinations from Congleton Bus Station in the Town Centre (Market Street) For bus times and days of operation please see bus stop timetables or contact Traveline. Plusbus destination, please see below for details. Plusbus tickets are valid only within the Congleton Plusbus zone (including Biddulph) on Arriva, D&G Bus and Hollinsheads Coaches. ● Direct trains operate to this destination from this Station. * For Biddulph Grange (National Trust) or Biddulph Country Park, please exit from the bus at the St Lawrence's Church bus stop. Biddulph Grange gardens and Country Park are (approximately) a 5-10 minutes walk up Congleton Road and Grange Road.		

Taxis

Congleton Station has no taxi rank or cab office. Advance booking is essential, please consider using the following local operators: (Inclusion of this number doesn't represent any endorsement of the taxi firm)

B-Tax Taxis
01260 278 522

A Stars
01260 280 280

Fareways
01260 298 008

Further information about all onward travel

Local Cycle Info cheshireeast.gov.uk For more information about cycle routes.	National Cycle Info sustrans.org.uk Sustrans is the UK's leading sustainable transport charity.	Bus Times See timetable displays at bus stops. www.traveline.info 0871 200 22 33 calls cost 15p per minute plus your phone company's access charge	NextBuses Find the bus times for your stop. Search for a bus stop by entering a postcode, street & town or a stop name & town.	PlusBus plusbus.info A discount price 'bus pass' that you buy with your train ticket. It gives you unlimited bus travel around your chosen town, on participating buses.
---	---	---	--	--

National Rail Enquiries

Online nationalrail.co.uk	NRE App Free National Rail Enquiries app for iOS and Android	Social Media facebook.com/nationalrailenq @nationalrailenq	Alert Me You can sign up to Alert Me messages on the National Rail Enquiries website where you can receive train and platform notifications directly to your smart phone. nationalrail.co.uk/alertme	Contact Centre 03457 48 49 50 Calls cost no more than calls to geographic numbers (01 or 02) and may be recorded.	PlusBike nationalrail.co.uk/plusbike For more information.
---	--	--	---	---	--



NORTHERN



National Rail
Britain's train companies working together



This poster shows details of popular destinations and main, frequent bus routes. Additional services may run, so please check with Traveline or see posters at local bus stops. Whilst considerable care has been taken to ensure the information contained on this poster is correct and accurate, National Rail cannot accept responsibility for any loss or inconvenience caused by any errors or omissions, or for loss, damage, injury or inconvenience relating to the cancellation, alteration, delay or diversion of a service. For any feedback, please e-mail comments@onwardtravelposters.com

Scan this code with your mobile for full station information.