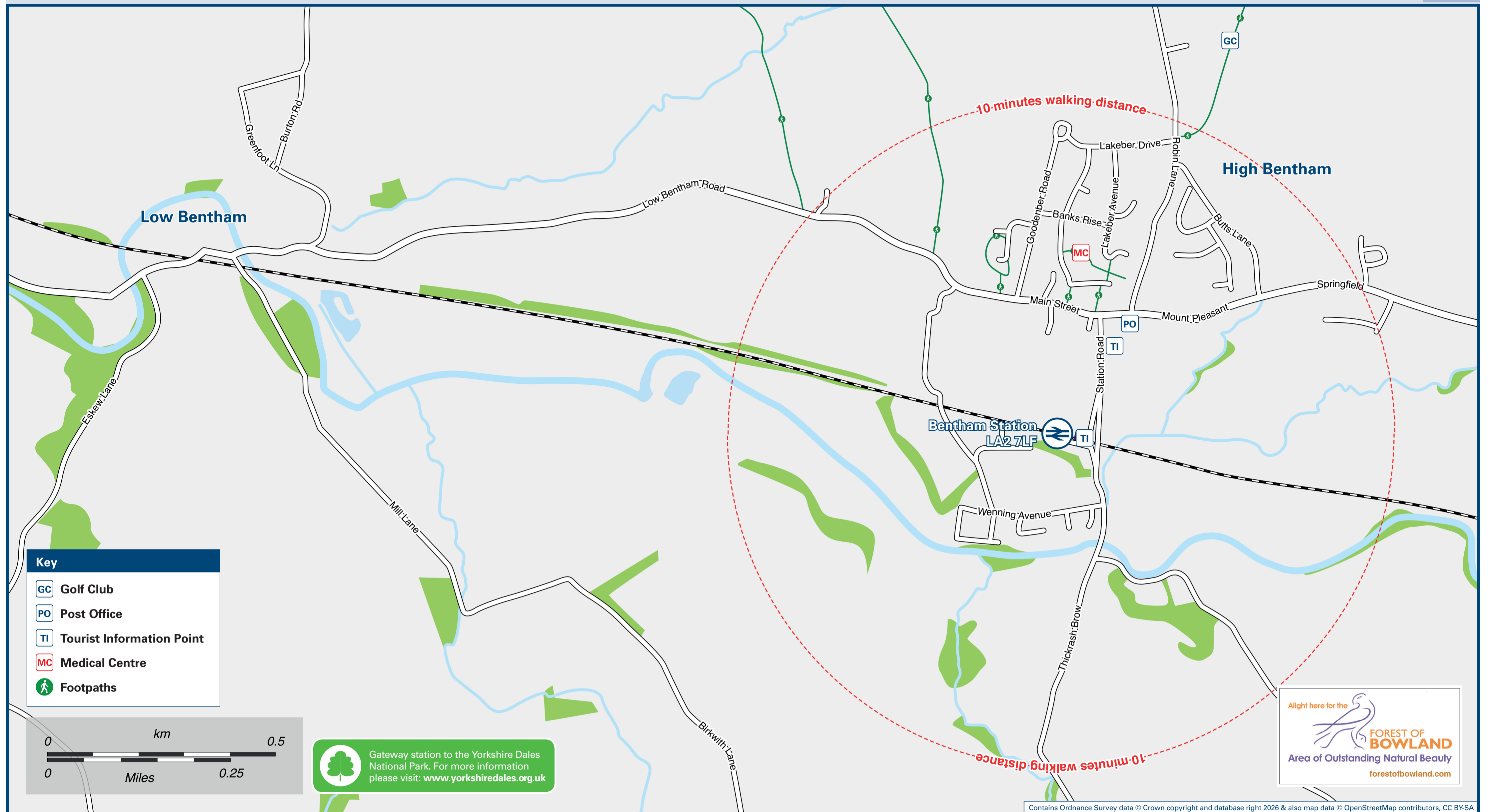




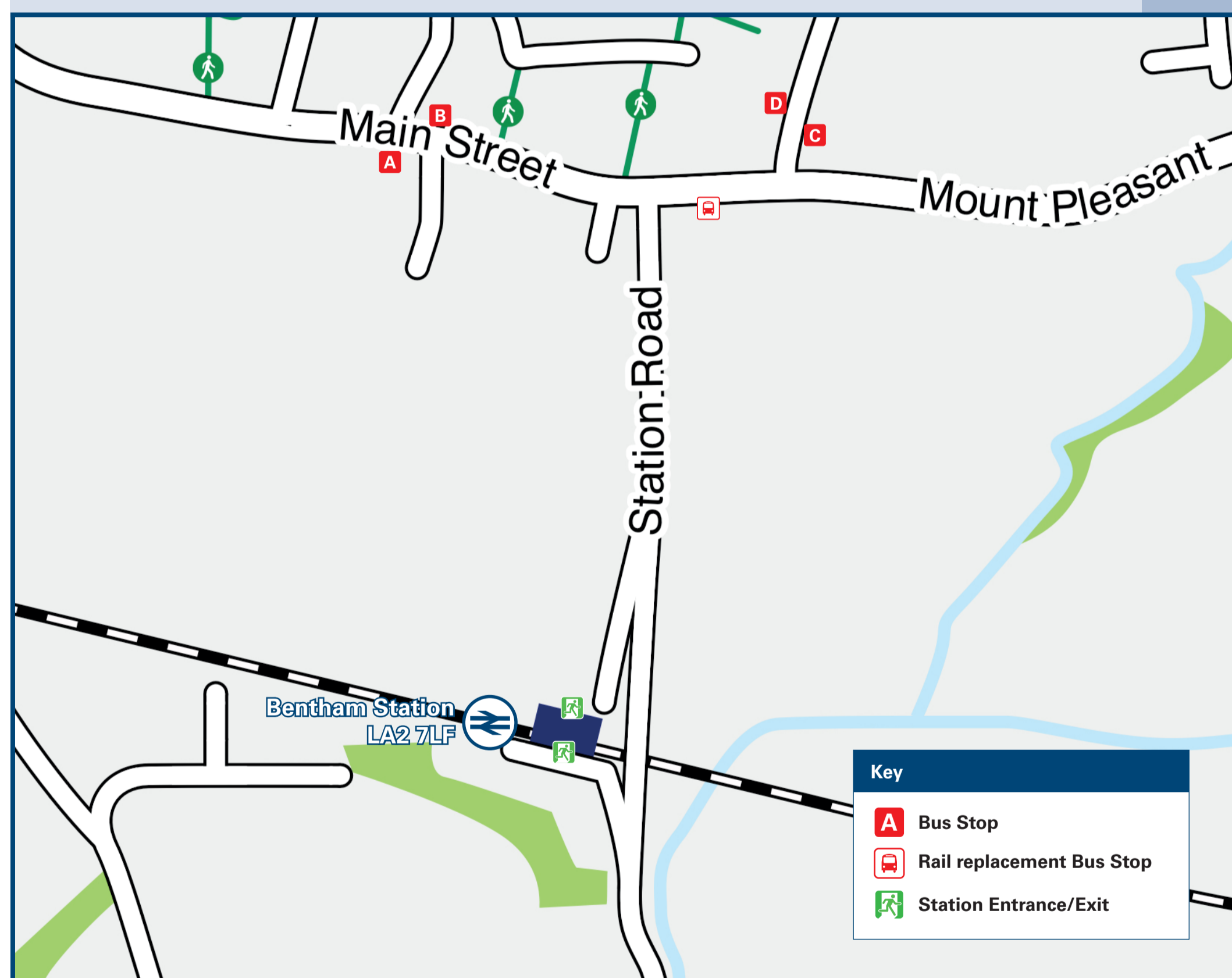
Bentham Station

Onward Travel Information

Local area map



Buses



Rail replacement buses pick up/drop off from outside the Black Bull pub, on Main Street.

Main destinations by bus

(Data correct at February 2026)

DESTINATION	BUS ROUTES	BUS STOP
Burton in Lonsdale	583#	A, B, C, D
Cowan Bridge	583#	A, B, C, D
Ingleton	583#	A, B, C, D
Kirkby Lonsdale	583#	A, B, C, D
Low Bentham	583#	A, B, C, D

Notes

THERE ARE NO FREQUENT LOCAL BUS SERVICES CALLING AT BENTHAM RAILWAY STATION
 Bus services operate from Kirby Lonsdale to many local towns and villages and into the Yorkshire Dales National Park and Forest of Bowland (AONB).
 Visit www.dalesbus.org for full details of local bus services.
 For bus times and days of operation please contact Traveline on www.traveline.info or call: 0871 200 22 33
 # Bus route 583 (The Craven Connection) operates a limited daytime service (4 buses a day) on Mondays to Saturdays, only. No evenings, Sundays or Bank Holiday service.
 AONB Forest of Bowland AONB; www.forestofbowland.com
 National Park Yorkshire Dales National Park; www.yorkshiredales.org.uk/

Taxis

Bentham station has no taxi rank or cab office. Advance booking is essential, please consider using the following local operators: (Inclusion of this number doesn't represent any endorsement of the taxi firm)

Bentham Taxis
07768 571 407

Austwick Taxis
07515 874 658

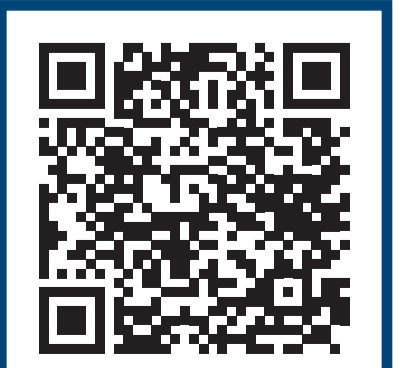
Settle Taxis
01729 824 824

Further information about all onward travel

Local Cycle Info www.northyorks.gov.uk/roads-parking-and-travel/roads-and-pavements/cycle-lanes-and-routes For more information about cycle routes.	National Cycle Info walkwheelcycletrust.org.uk	Bus Times See timetable displays at bus stops. www.traveline.info 0871 200 22 33 <small>calls cost 12p per minute plus your phone company's access charge</small>	PlusBus plusbus.info PlusBus is a discount price 'bus pass' that you buy with your train ticket. It gives you unlimited bus travel around your chosen town, on participating buses. Visit www.plusbus.info
---	--	--	---

National Rail Enquiries

Online nationalrail.co.uk	NRE App Free National Rail Enquiries app for iOS and Android	Social Media facebook.com/nationalrailenq @nationalrailenq	Alert Me You can sign up to Alert Me messages on the National Rail Enquiries website where you can receive train and platform notifications directly to your smart phone. nationalrail.co.uk/alertme	Contact Centre 03457 48 49 50 Calls cost no more than calls to geographic numbers (01 or 02) and may be recorded.	PlusBike nationalrail.co.uk/plusbike For more information.
---	--	--	---	--	--



This poster shows details of popular destinations and main, frequent bus routes. Additional services may run, so please check with Traveline or see posters at local bus stops. Whilst considerable care has been taken to ensure the information contained on this poster is correct and accurate, National Rail cannot accept responsibility for any loss or inconvenience caused by any errors or omissions, or for loss, damage, injury or inconvenience relating to the cancellation, alteration, delay or diversion of a service. For any feedback, please e-mail comments@onwardtravelposters.com

Scan this code with your mobile for full station information.