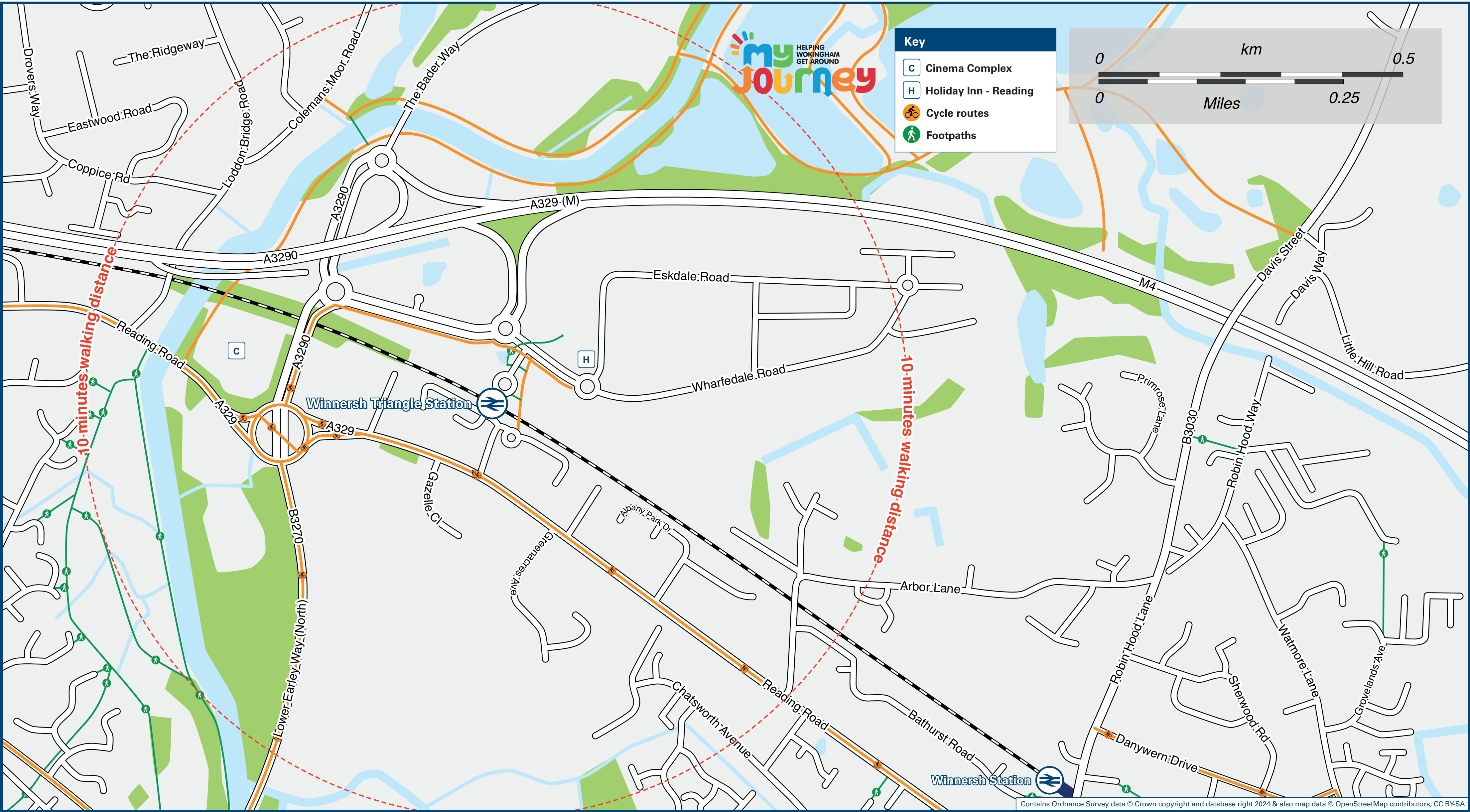




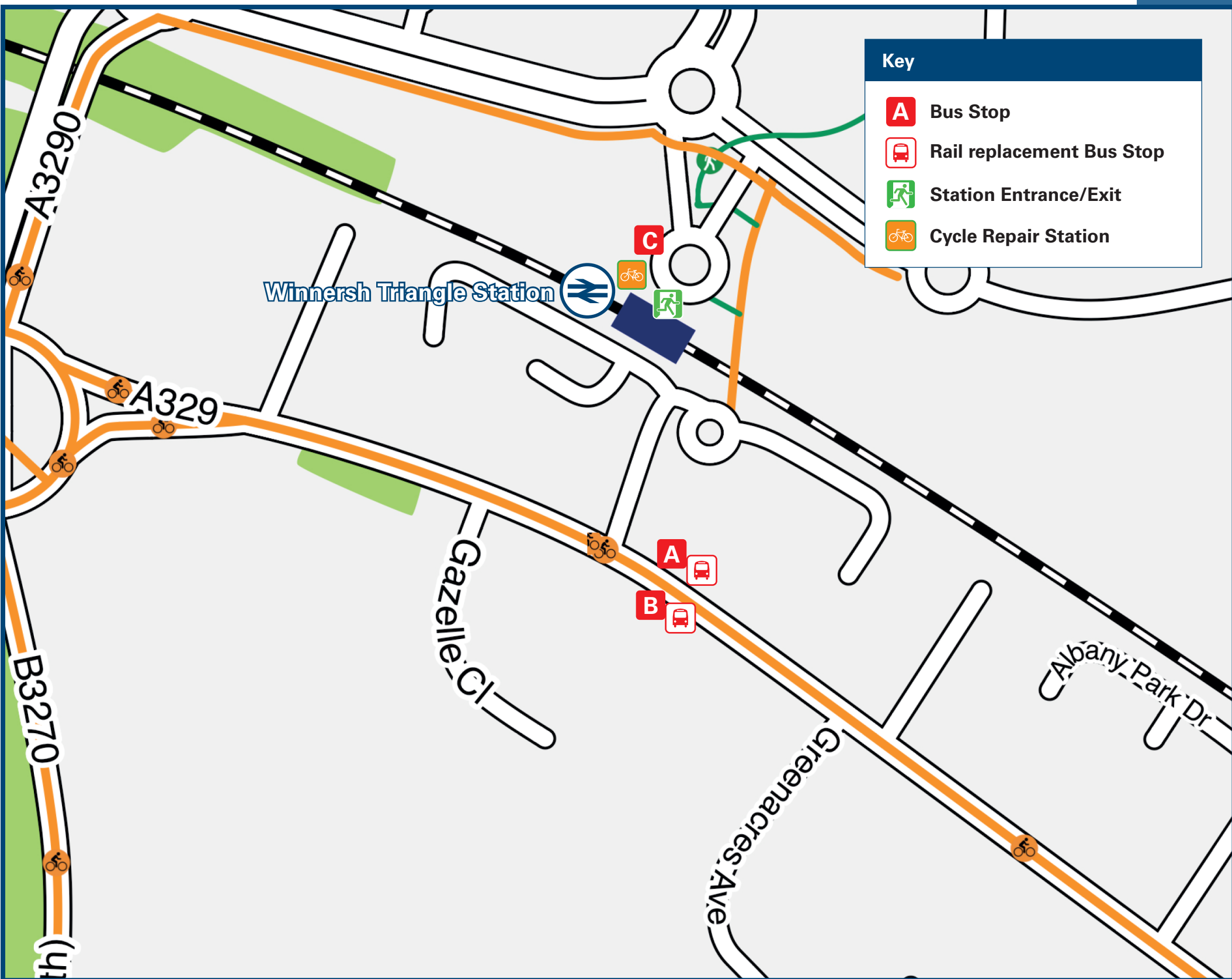
# Winnersh Triangle Station

## Onward Travel Information

### Local area map



### Buses



Rail replacement services depart from Cavendish Gardens bus stops on the Reading Road (A329).

### Main destinations by bus

(Data correct at October 2024)



DESTINATION	BUS ROUTES	BUS STOP
Bracknell	4, X4	A
Earley (Wokingham Road)	4, X4	B
Emmbrook	4, X4	A
Loddon Bridge	4, X4	B
Palmer Park	4, X4	B
Reading (Three Tuns)	4, X4	B
Reading (Town Centre)	4, X4 500	B C
University of Reading (Whiteknights Campus)	4, X4	B
Winnersh	4, X4	A
Wokingham	4, X4	A

#### Notes

Bus routes 4 and X4 operate daily.  
Bus route 500 operates every 15 minutes daytime and early evenings Mondays to Saturdays.  
Direct trains operate to this destination from this station.

### Taxis

Winnersh Triangle station has no taxi rank or cab office. Advance booking is essential, please consider using the following local operators: (Inclusion of this number doesn't represent any endorsement of the taxi firm)

**Eagle Cars**  
0118 950 0111

**Platinum Cars**  
0118 907 9229

**Loddon Cars**  
0118 932 1321

### Further information about all onward travel

<b>Local Cycle Info</b> <a href="http://myjourneywokingham.com">myjourneywokingham.com</a> For more information about active and sustainable transport in Wokingham.	<b>National Cycle Info</b> <a href="http://sustrans.org.uk">sustrans.org.uk</a> Sustrans is the UK's leading sustainable transport charity.	<b>Bus Times</b> See timetable displays at bus stops. <a href="http://www.traveline.info">www.traveline.info</a> 0871 200 22 33 calls cost 10p per minute plus your phone company's access charge	<b>NextBuses</b> <b>Find the bus times for your stop.</b> Search for a bus stop by entering a postcode, street & town or a stop name & town.	<b>PlusBus</b> <b>plusbus.info</b> A discount price 'bus pass' that you buy with your train ticket. It gives you unlimited bus travel around your chosen town, on participating buses.
--	---	---	--	--

### National Rail Enquiries

<b>Online</b> <a href="http://nationalrail.co.uk">nationalrail.co.uk</a>	<b>NRE App</b> Free National Rail Enquiries app for iOS and Android	<b>Social Media</b> facebook.com/nationalrailenq @nationalrailenq	<b>Alert Me</b> You can sign up to Alert Me messages on the National Rail Enquiries website where you can receive train and platform notifications directly to your smart phone. <a href="http://nationalrail.co.uk/alertme">nationalrail.co.uk/alertme</a>	<b>Contact Centre</b> 03457 48 49 50 Calls cost no more than calls to geographic numbers (01 or 02) and may be recorded.	<b>PlusBike</b> <a href="http://nationalrail.co.uk/plusbike">nationalrail.co.uk/plusbike</a> For more information.
---	--	---	---	--	--

**South Western Railway**



**National Rail**  
Britain's train companies working together



This poster shows details of popular destinations and main, frequent bus routes. Additional services may run, so please check with Traveline or see posters at local bus stops. Whilst considerable care has been taken to ensure the information contained on this poster is correct and accurate, National Rail cannot accept responsibility for any loss or inconvenience caused by any errors or omissions, or for loss, damage, injury or inconvenience relating to the cancellation, alteration, delay or diversion of a service. For any feedback, please e-mail [comments@onwardtravelposters.com](mailto:comments@onwardtravelposters.com)

Scan this code with your mobile for full station information.