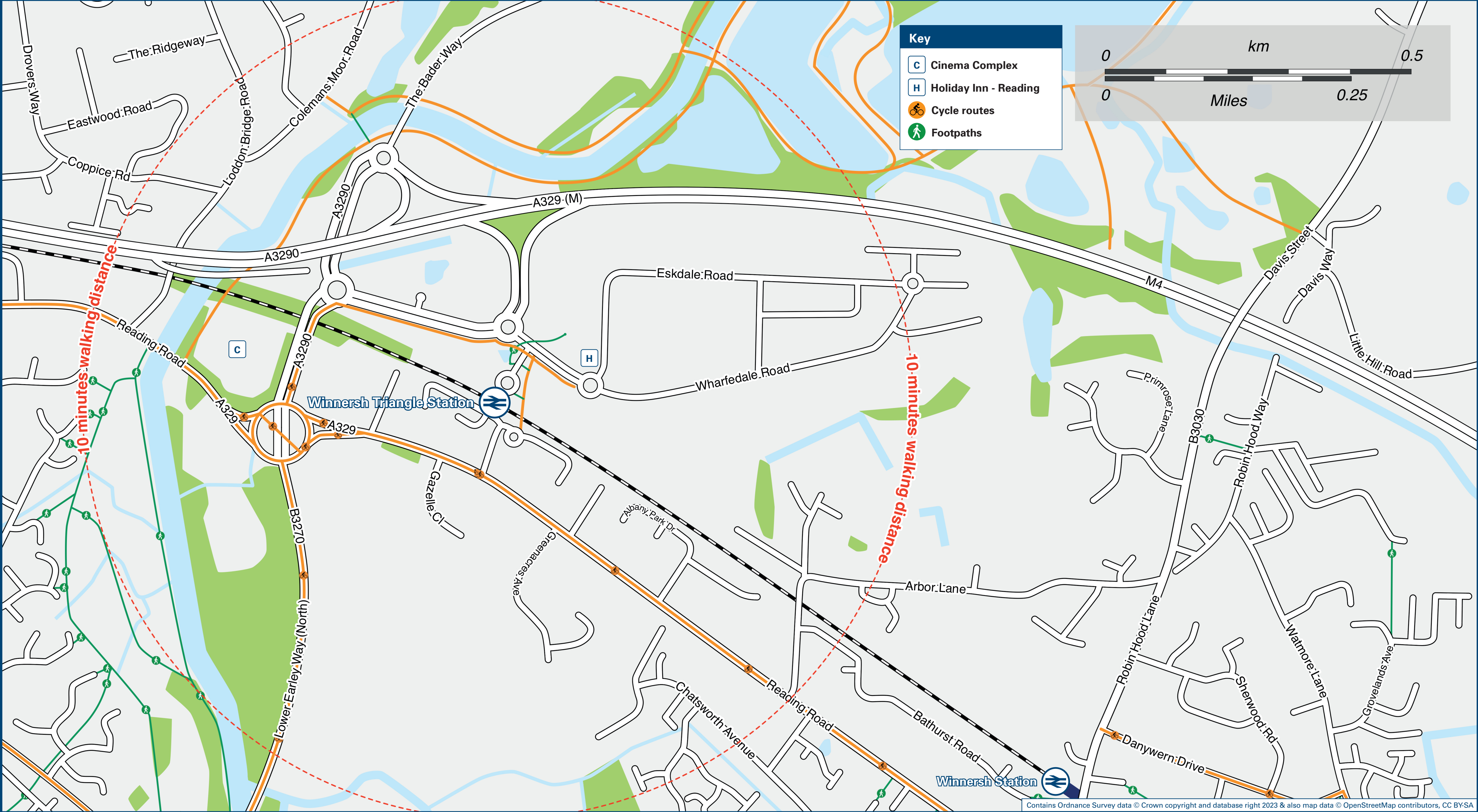




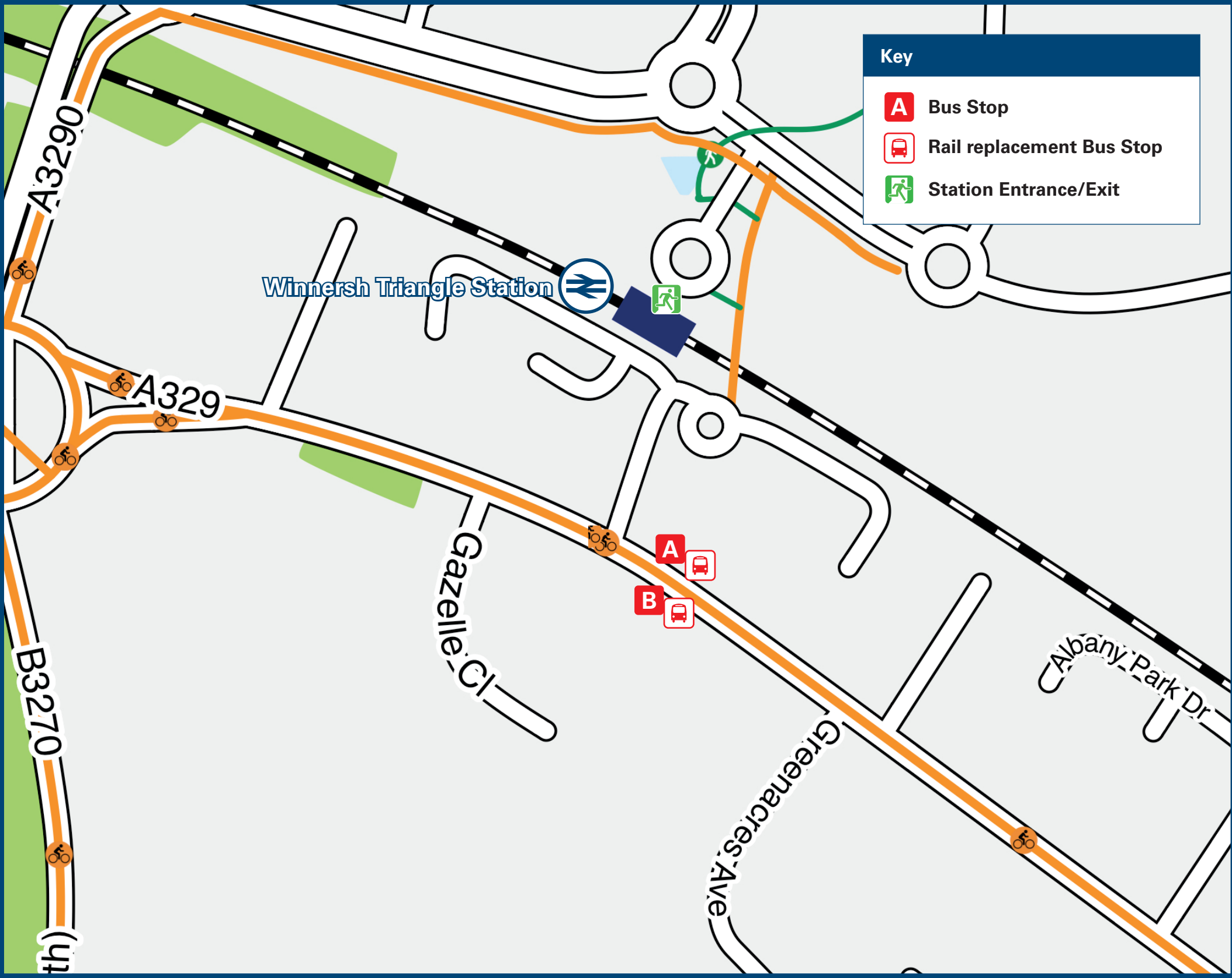
Winnersh Triangle Station

Onward Travel Information

Local area map



Buses



Rail replacement buses/coaches will depart from Cavendish Gardens on Reading Road

Main destinations by bus

(Data correct at December 2023)

DESTINATION	BUS ROUTES	BUS STOP
Bracknell	4, X4	A
Earley (Wokingham Road)	4, X4	B
Emmbrook	4, X4	A
Loddon Bridge	4, X4	B
Palmer Park	4, X4	B
Reading (Three Tuns)	4, X4	B
Reading (Town Centre)	4, X4	B
University of Reading (Whiteknights Campus)	4, X4	B
Winnersh	4, X4	A
Wokingham	4, X4	A

Notes Bus routes 4 & X4 operate daily.
Direct trains operate to this destination from this station.

Taxis

Winnersh Triangle station has no taxi rank or cab office. Advance booking is essential, please consider using the following local operators: (Inclusion of this number doesn't represent any endorsement of the taxi firm)

Eagle Cars
0118 950 0111

Platinum Cars
0118 907 9229

Yellow Cars
0118 966 6555

Further information about all onward travel

Local Cycle Info myjourneywokingham.com For more information about cycle routes.	National Cycle Info sustrans.org.uk Sustrans is the UK's leading sustainable transport charity.	Bus Times See timetable displays at bus stops. www.traveline.info 0871 200 22 33 calls cost 15p per minute plus your phone company's access charge	NextBuses Find the bus times for your stop. Search for a bus stop by entering a postcode, street & town or a stop name & town.	PlusBus plusbus.info A discount price 'bus pass' that you buy with your train ticket. It gives you unlimited bus travel around your chosen town, on participating buses.
---	---	---	--	--

National Rail Enquiries

Online nationalrail.co.uk	NRE App Free National Rail Enquiries app for iOS and Android	Social Media facebook.com/nationalrailenq @nationalrailenq	Alert Me You can sign up to Alert Me messages on the National Rail Enquiries website where you can receive train and platform notifications directly to your smart phone. nationalrail.co.uk/alertme	Contact Centre 03457 48 49 50 Calls cost no more than calls to geographic numbers (01 or 02) and may be recorded.	PlusBike nationalrail.co.uk/plusbike For more information.
---	--	--	---	--	--

South Western Railway



National Rail
Britain's train companies working together

