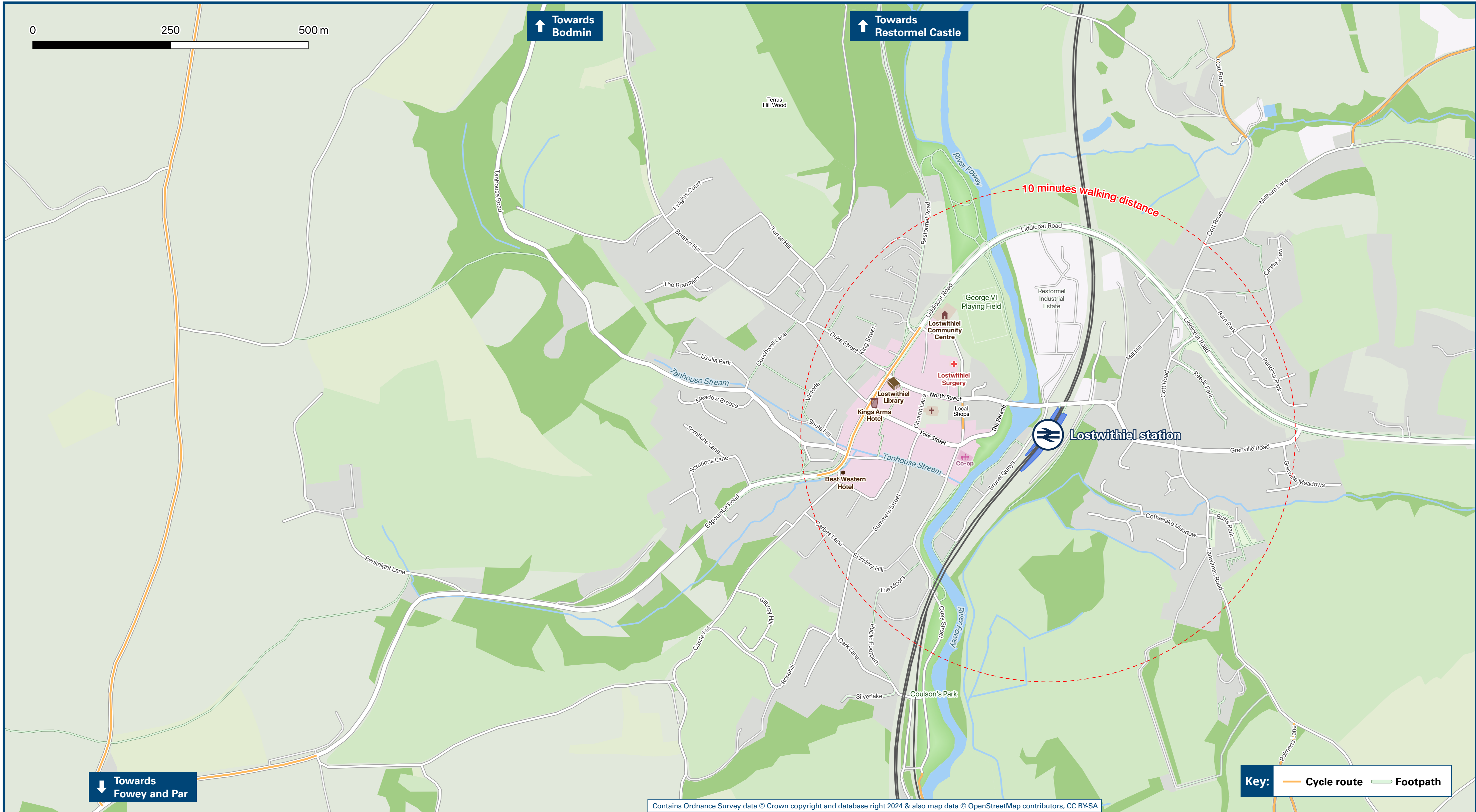




# Lostwithiel Station

## Onward Travel Information

### Local area map



### Station Map



Rail replacement buses/coaches will depart from: the St Austell-bound bus stop on Liddicoat Road (A390), opposite The Royal Talbot Hotel on the corner of Duke Street.

### Main destinations by bus

(Data correct at January 2025)



DESTINATION	BUS ROUTES	BUS STOP
Bethel	28	A
Eden Project	28	A
Lostwithiel (Cott Road)	28	B
Mount Charles	28	A
St Austell	28	A
St Blazey	28	A
Tregrehan Mills	28	A

#### Notes

Bus route 28 runs a limited Mondays to Saturdays service. No Sunday service.



Karyans rag Kernow

### Taxis

This station has no taxi rank or cab office. Advance booking is essential, please consider using the following local operators: (Inclusion of this number doesn't represent any endorsement of the taxi firm)

**Lostwithiel Town Cars**  
07760 303 515

**Rogers Private Hire**  
07976 372 066

**KP Cabs**  
01726 815 415

### Further information about all onward travel

#### Local Cycle Info

[cornwall.gov.uk](http://cornwall.gov.uk)

For more information about cycle routes.

#### National Cycle Info

[sustrans.org.uk](http://sustrans.org.uk)

Sustrans is the UK's leading sustainable transport charity.

#### Bus Times

See timetable displays at bus stops.



[www.traveline.info](http://www.traveline.info)

0871 200 22 33

calls cost 15p per minute plus your phone company's access charge

#### NextBuses



**Find the bus times for your stop.**

Search for a bus stop by entering a postcode, street & town or a stop name & town.

#### PlusBus



[plusbus.info](http://plusbus.info)

A discount price 'bus pass' that you buy with your train ticket. It gives you unlimited bus travel around your chosen town, on participating buses.

### National Rail Enquiries

#### Online

[nationalrail.co.uk](http://nationalrail.co.uk)

#### NRE App

Free National Rail Enquiries app for iOS and Android

#### Social Media

[facebook.com/nationalrailenq](https://facebook.com/nationalrailenq)  
[@nationalrailenq](https://twitter.com/nationalrailenq)

#### Alert Me

You can sign up to Alert Me messages on the National Rail Enquiries website where you can receive train and platform notifications directly to your smart phone.  
[nationalrail.co.uk/alertme](http://nationalrail.co.uk/alertme)

#### Contact Centre

03457 48 49 50

Calls cost no more than calls to geographic numbers (01 or 02) and may be recorded.

#### PlusBike

[nationalrail.co.uk/plusbike](http://nationalrail.co.uk/plusbike)

For more information.



**National Rail**  
Britain's train companies working together



This poster shows details of popular destinations and main, frequent bus routes. Additional services may run, so please check with Traveline or see posters at local bus stops. Whilst considerable care has been taken to ensure the information contained on this poster is correct and accurate, National Rail cannot accept responsibility for any loss or inconvenience caused by any errors or omissions, or for loss, damage, injury or inconvenience relating to the cancellation, alteration, delay or diversion of a service. For any feedback, please e-mail [comments@onwardtravelposters.com](mailto:comments@onwardtravelposters.com)

Scan this code with your mobile for full station information.