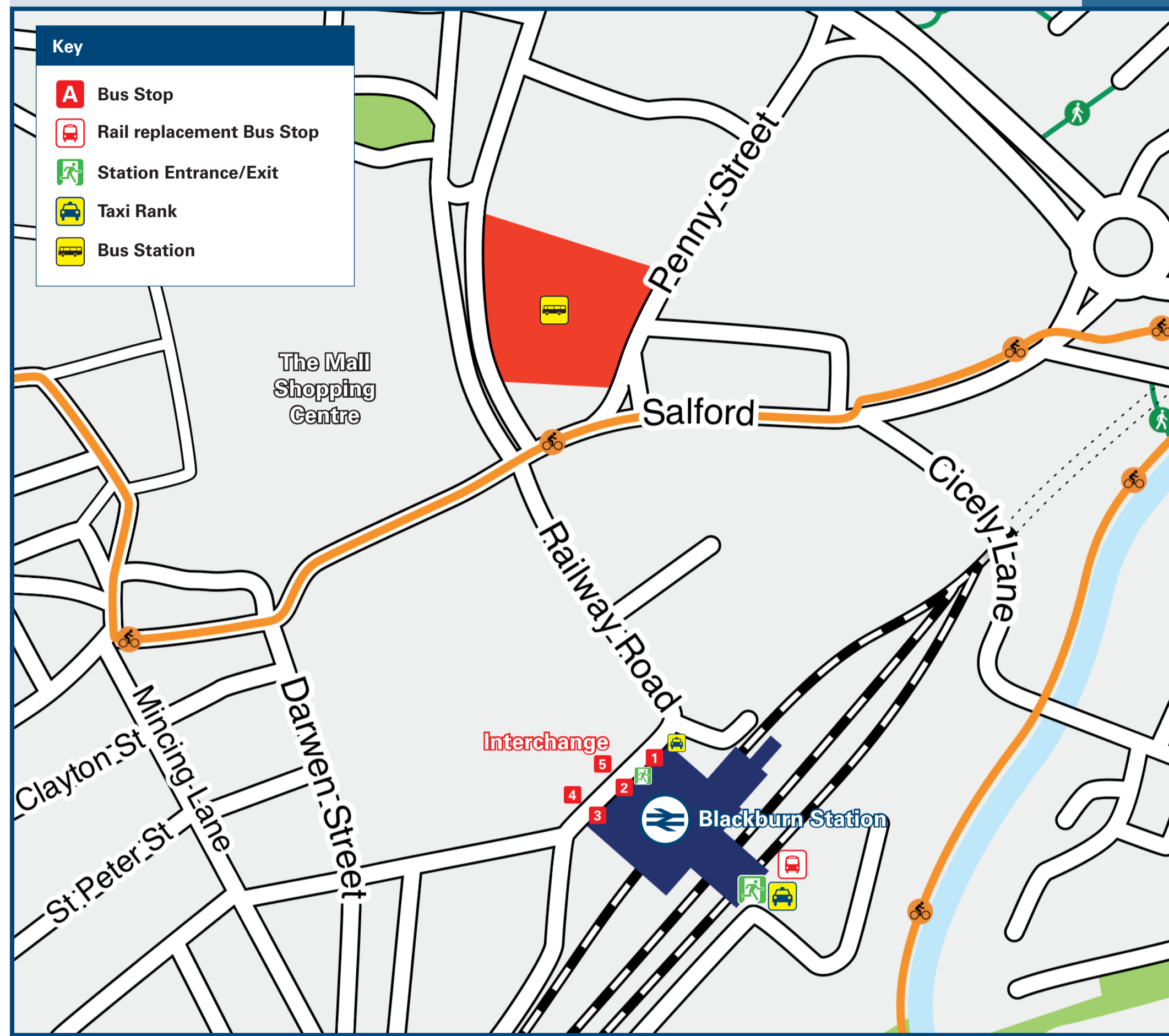




Blackburn Station

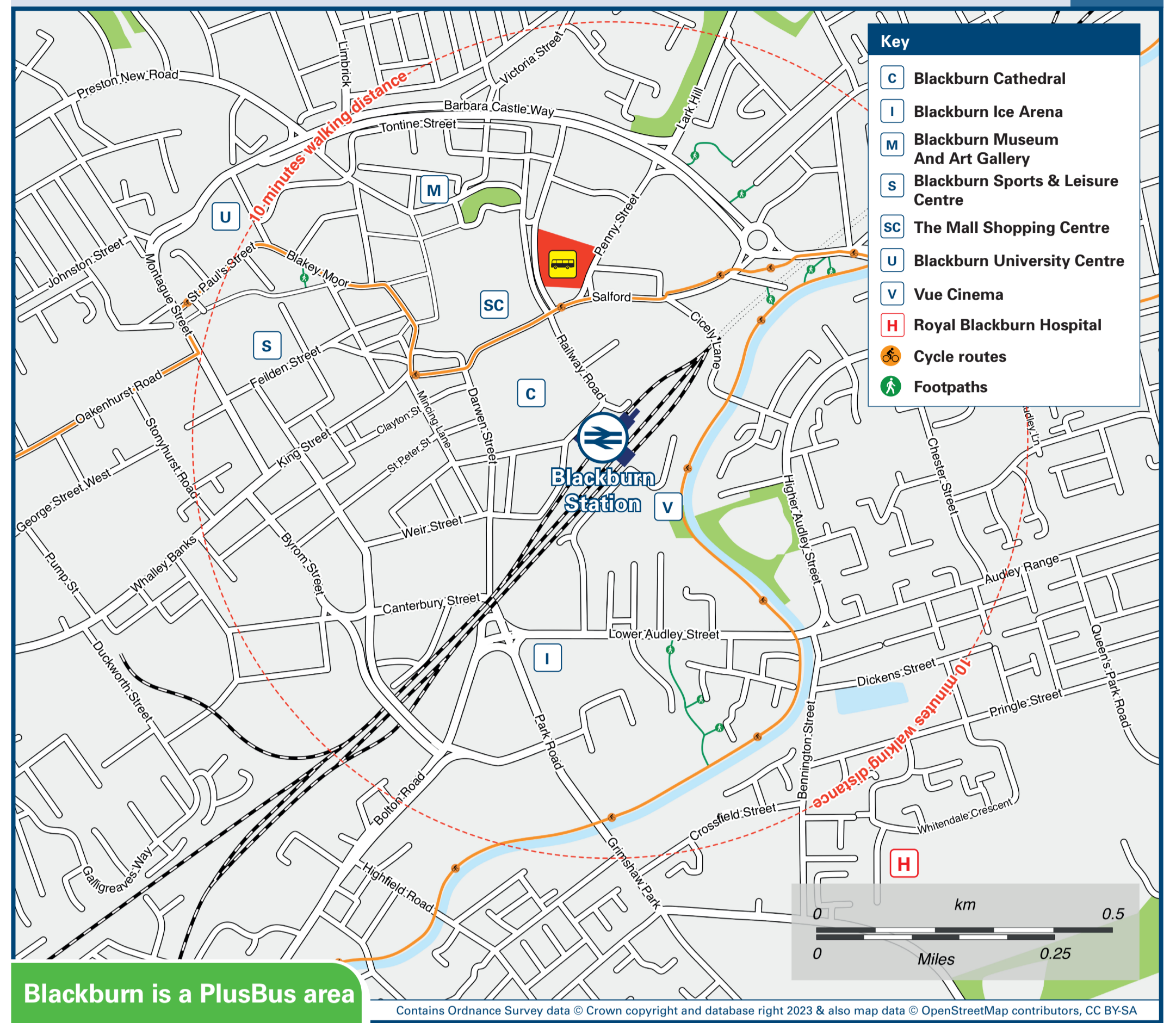
Onward Travel Information

Buses and Taxis



Rail replacement buses depart from the Vue Cinema car park at the rear of the station.

Local area map



Blackburn is a PlusBus area

Add PlusBus to your train ticket—now available on eTicket from leading rail ticketing apps—for unlimited bus travel in the PlusBus zone in your destination town or city. Visit www.plusbus.info

Main destinations by bus

(Data correct at February 2026)

DESTINATION	BUS ROUTES	BUS STOP
Abbey Village	2, 2A	Interchange stop 1, 1
Accrington	6	Bus Stn Stand 1, 1
Altham	7, 7A	Bus Stn Stand 1, 3
Astley Bridge	152	Interchange stop 1, 4
Audley Range	1	Interchange stop 1, 1
Beardwood (For BMI Beardwood Hospital)	22	Interchange stop 1, 2
Belthorn	33*	Bus Stn Stand 1
Billington	59	Interchange stop 1, 4
Blackamoor (Fishmoor Drive)	481	Interchange stop 1, 2
Blackburn (Town Centre & Bus Station)	12A*, 12C*	Interchange stop 1, 2
Blackburn (Town Centre & Bus Station)	5 minutes walk via Railway Road (see maps above)	
Bolton	1	Interchange stop 1, 1
Brinscall	2, 2A	Interchange stop 1, 1
Burnley	HS1~	Interchange stop 1, 3
Bury	152	Interchange stop 1, 4
Cherry Tree (Livesey Branch Road)	481	Interchange stop 1, 2
Cherry Tree (Preston Old Road)	2, 2A	Interchange stop 1, 1
Chorley	152	Bus Stn Stand 5
Church	2	Interchange stop 1, 1
Clayton-le-Dale	7, 7A	Bus Stn Stand 1, 3
Clayton-le-Moors	25*, 45	Bus Stn Stand 1
Clitheroe	6	Bus Stn Stand 1, 1
Darwen	7	Bus Stn Stand 1, 3
Earcroft	152	Interchange stop 1, 4
Egerton	22	Interchange stop 1, 4
Ewood Hub (for Ewood Park Football Ground)	25*	Bus Stn Stand 1
Feniscowles	481	Interchange stop 1, 2
Great Harwood	10*	Interchange stop 1, 5
	33*	Bus Stn Stand 1
	1	Interchange stop 1, 1
	1	Interchange stop 1, 1
	1, 2, 2A	Interchange stop 1, 1
	2, 2A	Interchange stop 1, 1
	152	Bus Stn Stand 5
	6	Bus Stn Stand 1, 1
	7	Bus Stn Stand 1, 3

DESTINATION	BUS ROUTES	BUS STOP
Guide	481	Interchange stop 1, 2
	HS1~	Interchange stop 1, 3
	33*	Bus Stn Stand 1
Haslingden	481	Interchange stop 1, 2
Higher Croft	12A*, 12C*	Interchange stop 1, 2
Higher Walton	152	Bus Stn Stand 5
Hoghton	152	Bus Stn Stand 5
Intack	7, 7A	Bus Stn Stand 1, 3
Lammack	10*	Interchange stop 1, 5
	25*, 25A*	Bus Stn Stand 1
Langho	22	Interchange stop 1, 4
Leyburn Road	25*	Bus Stn Stand 1
Little Harwood	4	Bus Stn Stand 6
Longridge	3*	Bus Stn Stand 4
Mellor Brook	45	Bus Stn Stand 1
Mill Hill	25*, 25A*	Bus Stn Stand 1
Oswaldtwistle	59	Interchange stop 1, 4
Padiham	4	Bus Stn Stand 6
Pleckgate	6	Bus Stn Stand 1, 1
Preston	7, 7A	Bus Stn Stand 1, 3
Ramsgreave	152	Interchange stop 1, 4
Rawtenstall	45	Bus Stn Stand 1
Revidge	45	Bus Stn Stand 1
Ribchester	2, 2A	Interchange stop 1, 1
Riley Green	152	Bus Stn Stand 5
Rishton	6	Bus Stn Stand 1, 1
	152	Interchange stop 1, 4
Royal Blackburn Hospital	12A*, 12C*, 22, 59, 481	Interchange stop 1, 2
	HS1~	Interchange stop 1, 3
	33*	Bus Stn Stand 1

DESTINATION	BUS ROUTES	BUS STOP
St Mary's College (Blackburn)	10*	Interchange stop 1, 5
Salesbury	25*, 25A*, 45	Bus Stn Stand 1
Samlesbury	45	Bus Stn Stand 1
Shadsworth	59	Interchange stop 1, 4
Sunnybower	22	Interchange stop 1, 2
Wensley Fold	33*	Bus Stn Stand 1
Whalley	3*	Bus Stn Stand 4
Whitebirk	10*	Interchange stop 1, 5
Witton (for Witton Park)	152	Bus Stn Stand 5
	22	Interchange stop 1, 4
	25*	Bus Stn Stand 1
	2, 2A	Interchange stop 1, 1
	6	Bus Stn Stand 1, 1
	152	Interchange stop 1, 4
	22	Interchange stop 1, 4
	45	Bus Stn Stand 1
	2, 2A	Interchange stop 1, 1
	152	Bus Stn Stand 5

Notes

- PlusBus destination, please see below for details.
- PlusBus tickets are valid in the Accrington, Blackburn & Darwen PLUSBUS zone on The Blackburn Bus Company, Burnley Bus Company, and Stagecoach Merseyside and Stagecoach South Lancashire services.
- For bus times and days of operation please see bus stop timetables at the Interchange outside the station, or at the Bus Station, or contact Traveline on www.traveline.info or call: 0871 200 22 33
- Direct trains operate to this destination from this station.
- * Bus routes 3, 10, 12A, 12C, 25, 25A & 33 operate limited daytime Mondays to Saturdays services, only. No evenings or Sundays service.
- ~ Bus route HS1 operates on Mondays to Fridays, only.

Taxis

Blackburn is a major station where taxis are usually available on a rank. Advance booking is not normally necessary, unless arriving early in the morning or late at night. Operators who may accept bookings include: (Inclusion of this number doesn't represent any endorsement of the taxi firm)

City Taxis
01254 777 888

Max Taxis
01254 694 444

Crown Cars
01254 492 491

Further information about all onward travel

Local Cycle Info blackburn.gov.uk For more information about cycle routes.	National Cycle Info walkwheelcycletrust.org.uk	Bus Times See timetable displays at bus stops. www.traveline.info 0871 200 22 33 calls cost 15p per minute plus your phone company's access charge	PlusBus plusbus.info PlusBus is a discount price 'bus pass' that you buy with your train ticket. It gives you unlimited bus travel around your chosen town, on participating buses. Visit www.plusbus.info
---	--	---	---

National Rail Enquiries

Online nationalrail.co.uk	NRE App Free National Rail Enquiries app for iOS and Android	Social Media facebook.com/nationalrailenq @nationalrailenq	Alert Me You can sign up to Alert Me messages on the National Rail Enquiries website where you can receive train and platform notifications directly to your smart phone. nationalrail.co.uk/alertme	Contact Centre 03457 48 49 50 Calls cost no more than calls to geographic numbers (01 or 02) and may be recorded.	PlusBike nationalrail.co.uk/plusbike For more information.
---	--	---	---	--	--



This poster shows details of popular destinations and main, frequent bus routes. Additional services may run, so please check with Traveline or see posters at local bus stops. Whilst considerable care has been taken to ensure the information contained on this poster is correct and accurate, National Rail cannot accept responsibility for any loss or inconvenience caused by any errors or omissions, or for loss, damage, injury or inconvenience relating to the cancellation, alteration, delay or diversion of a service. For any feedback, please e-mail comments@onwardtravelposters.com

Scan this code with your mobile for full station information.