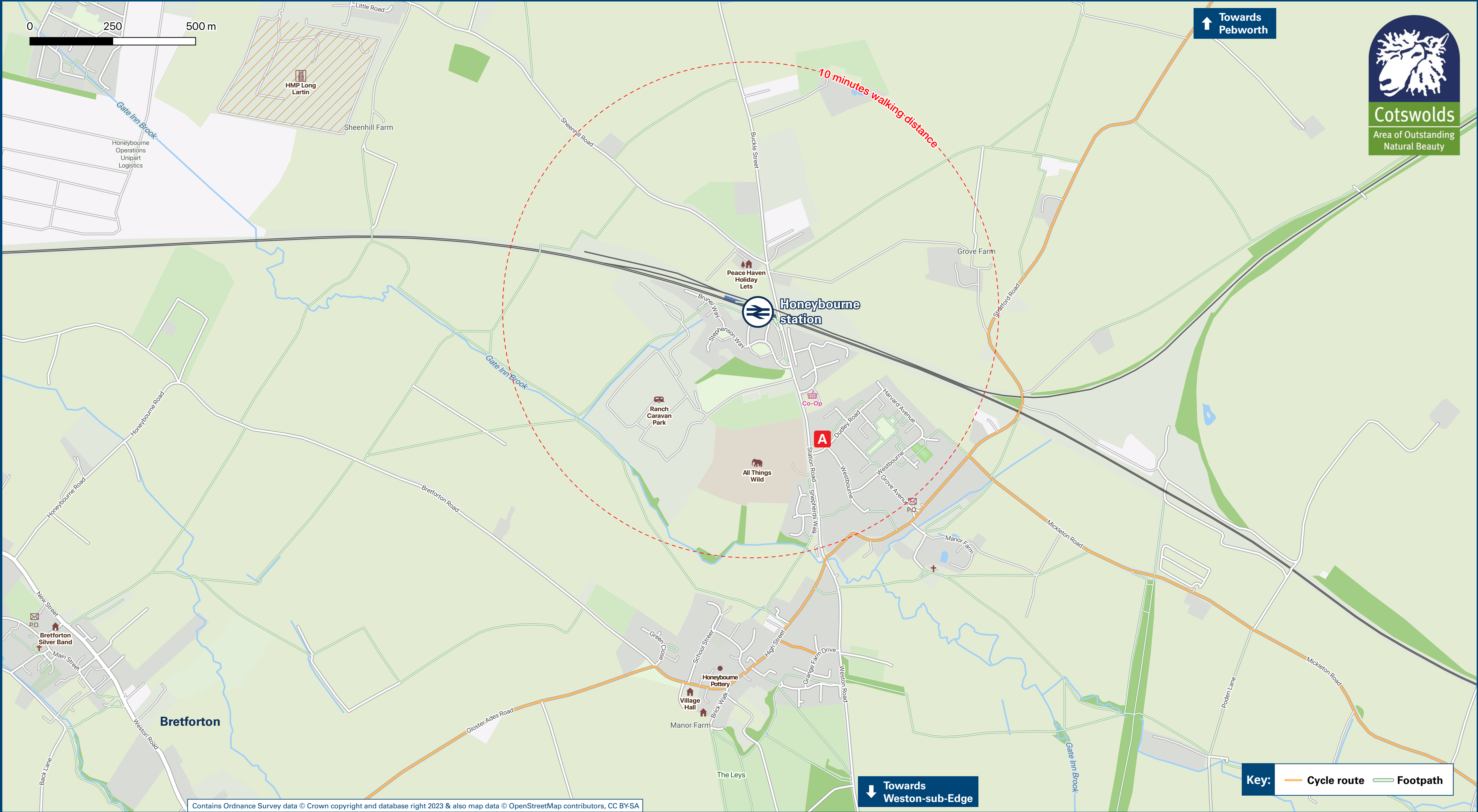




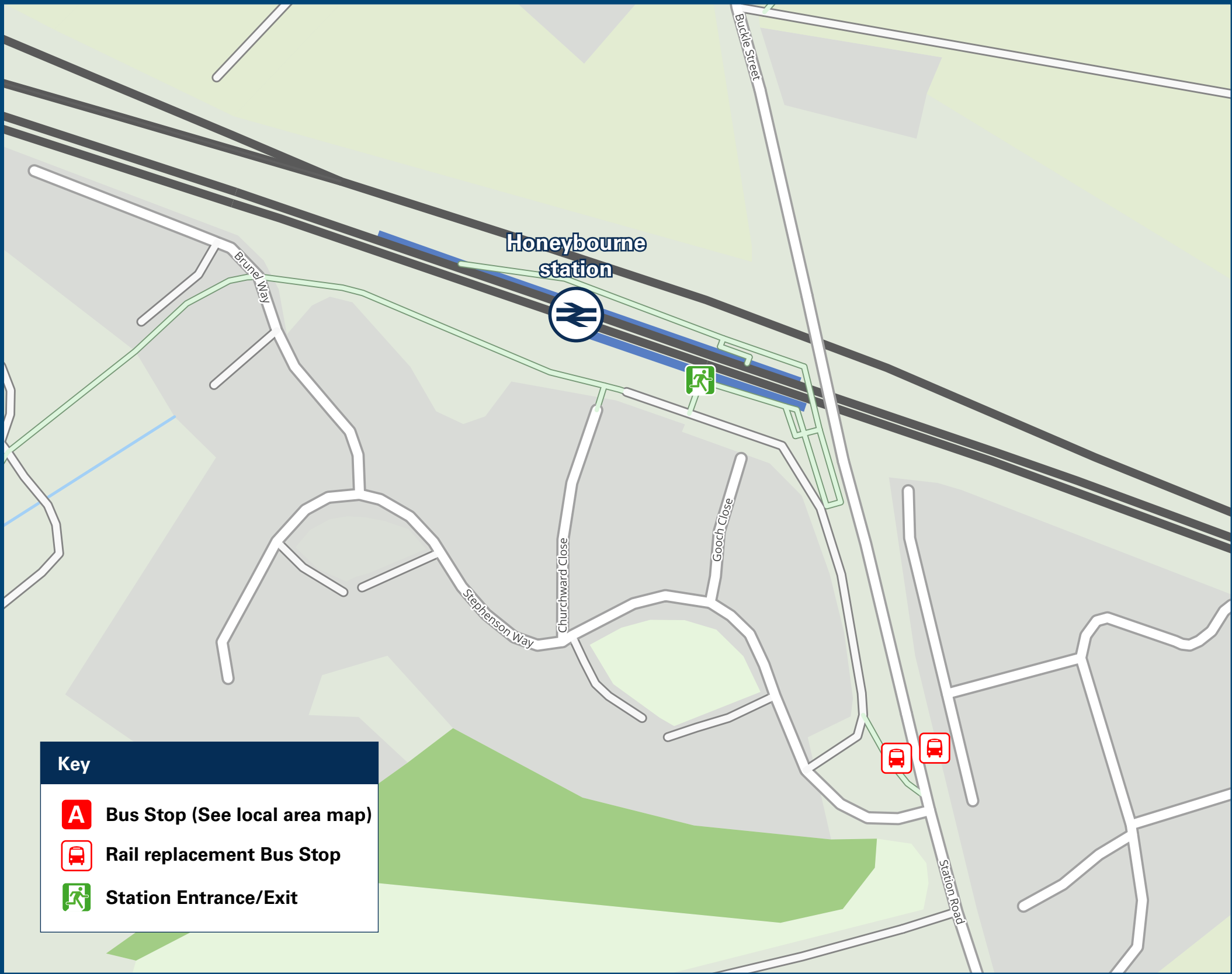
Honeybourne Station

Onward Travel Information

Local area map



Buses



Rail replacement buses/coaches depart from Station Road bus stop opposite Stephenson Way (towards Charlbury and Oxford) and on the corner of Station Road and Stephenson Way (towards Worcester)

Main destinations by bus

(Data correct at November 2023)

DESTINATION	BUS ROUTES	BUS STOP
Badsey	553	A
Bengeworth	553	A
Bretforton	553	A
Evesham	553	A
Evesham Community Hospital	553	A
Honeybourne (High Street)	10 - 15 minutes walk from this station, see local area map 553	A
Long Lartin (& HM Prison)	Taxi from this station	

Notes

Bus route 553 operates Mondays to Saturdays. No Sunday services.
For bus times and other bus enquiries, please contact Traveline on 0871 200 22 33 or contact the bus operator (see below):
Henshaws (for bus route 553) call 01608 651 414.
 Direct trains operate to this destination from this station.

Taxis

Honeybourne station has no taxi rank or cab office. Advance booking is essential, please consider using the following local operators: (Inclusion of this number doesn't represent any endorsement of the taxi firm)

ABC Private Hire
01386 834 028

Claremont Cars
01386 833 660

BR Taxis
01386 303 030

Further information about all onward travel

Local Cycle Info	National Cycle Info	Bus Times	NextBuses	PlusBus
worcestershires.gov.uk For more information about cycle routes.	sustrans.org.uk Sustrans is the UK's leading sustainable transport charity.	See timetable displays at bus stops. www.traveline.info 0871 200 22 33 calls cost 15p per minute plus your phone company's access charge	Find the bus times for your stop. Search for a bus stop by entering a postcode, street & town or a stop name & town.	plusbus.info A discount price 'bus pass' that you buy with your train ticket. It gives you unlimited bus travel around your chosen town, on participating buses.

National Rail Enquiries

Online	NRE App	Social Media	Alert Me	Contact Centre	PlusBike
nationalrail.co.uk	Free National Rail Enquiries app for iOS and Android	facebook.com/nationalrailenq @nationalrailenq	You can sign up to Alert Me messages on the National Rail Enquiries website where you can receive train and platform notifications directly to your smart phone. nationalrail.co.uk/alertme	03457 48 49 50 Calls cost no more than calls to geographic numbers (01 or 02) and may be recorded.	nationalrail.co.uk/plusbike For more information.

GWR | Great Western Railway



National Rail
Britain's train companies working together



This poster shows details of popular destinations and main, frequent bus routes. Additional services may run, so please check with Traveline or see posters at local bus stops. Whilst considerable care has been taken to ensure the information contained on this poster is correct and accurate, National Rail cannot accept responsibility for any loss or inconvenience caused by any errors or omissions, or for loss, damage, injury or inconvenience relating to the cancellation, alteration, delay or diversion of a service. For any feedback, please e-mail comments@onwardtravelposters.com

Scan this code with your mobile for full station information.