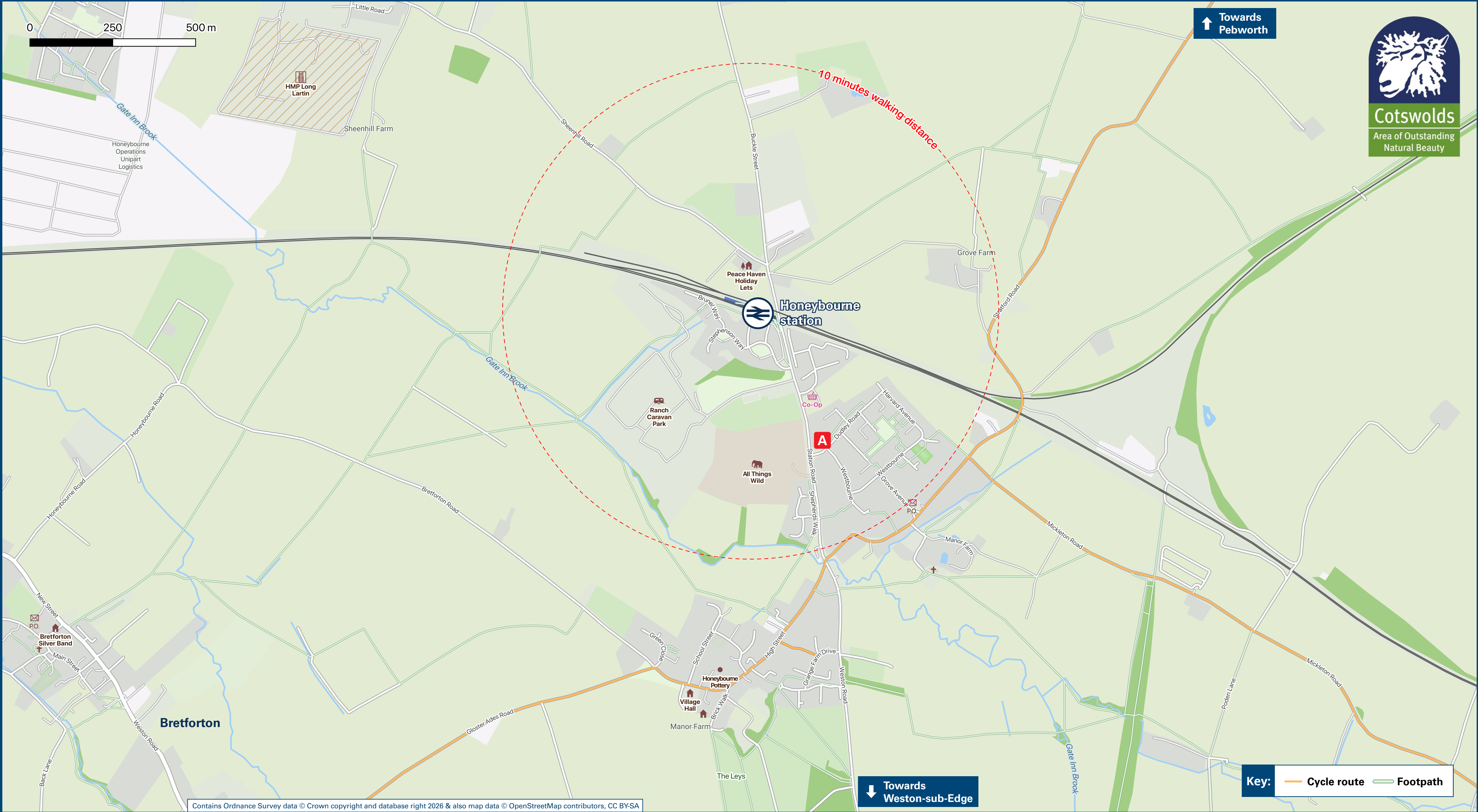




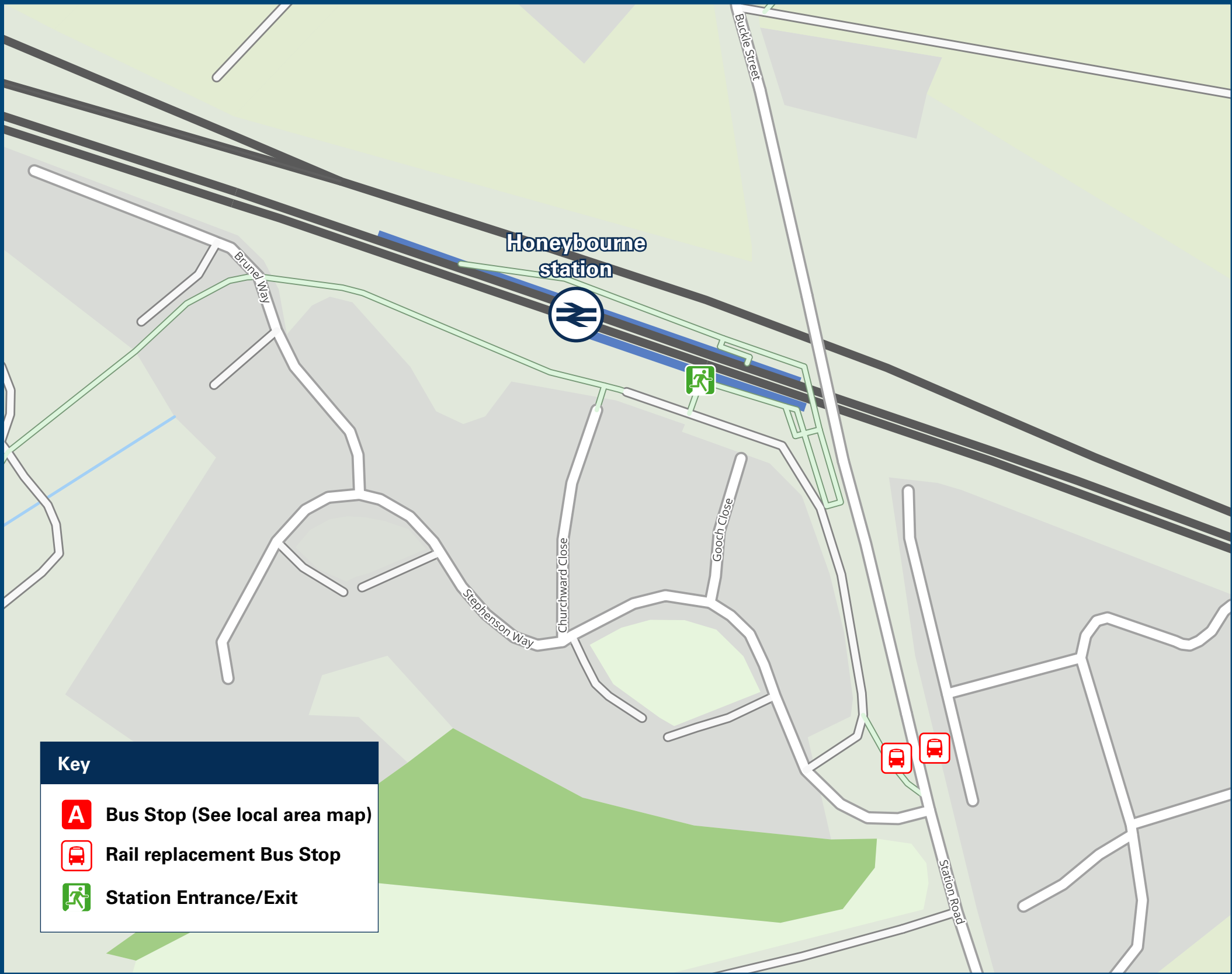
Honeybourne Station

Onward Travel Information

Local area map



Buses



Rail replacement buses/coaches towards Oxford - from the Pathway on Station Road opposite National Rail station sign. Towards Worcester - from Station Road just before entrance to Stephenson Way.

Main destinations by bus

(Data correct at January 2026)

DESTINATION	BUS ROUTES	BUS STOP
Badsey	553	
Bengeworth	553	
Bretforton	553	
Evesham	553	
Evesham Community Hospital	553	
Honeybourne (High Street)	10 - 15 minutes walk from this station, see local area map 553	
Long Lartin (& HM Prison)	Taxi from this station	

Notes

Bus route 553 operates a limited daytime service on Mondays to Saturdays, only. No evening or Sunday service.
For bus times and days of operation please contact Traveline on www.traveline.info or call: 0871 200 22 33
 Direct trains operate to this destination from this station.
AONB Cotswolds (AONB) www.cotswoldsaonb.org.uk

Taxis

Honeybourne station has no taxi rank or cab office. Advance booking is essential, please consider using the following local operators: (Inclusion of this number doesn't represent any endorsement of the taxi firm)

ABC Private Hire
07752 640 352

1st Call Taxis (Evesham)
07766 218 218

Emerald Taxis
01386 761 705

Further information about all onward travel

Local Cycle Info	National Cycle Info	Bus Times	PlusBus
worcestershires.gov.uk For more information about cycle routes.	walkwheelcycletrust.org.uk	See timetable displays at bus stops. www.traveline.info 0871 200 22 33 calls cost 15p per minute plus your phone company's access charge	plusbus.info PlusBus is a discount price 'bus pass' that you buy with your train ticket. It gives you unlimited bus travel around your chosen town, on participating buses. Visit www.plusbus.info

National Rail Enquiries

Online	NRE App	Social Media	Alert Me	Contact Centre	PlusBike
nationalrail.co.uk	Free National Rail Enquiries app for iOS and Android	facebook.com/nationalrailenq @nationalrailenq	You can sign up to Alert Me messages on the National Rail Enquiries website where you can receive train and platform notifications directly to your smart phone. nationalrail.co.uk/alertme	03457 48 49 50 Calls cost no more than calls to geographic numbers (01 or 02) and may be recorded.	nationalrail.co.uk/plusbike For more information.

GWR | Great Western Railway



National Rail
Britain's train companies working together



This poster shows details of popular destinations and main, frequent bus routes. Additional services may run, so please check with Traveline or see posters at local bus stops. Whilst considerable care has been taken to ensure the information contained on this poster is correct and accurate, National Rail cannot accept responsibility for any loss or inconvenience caused by any errors or omissions, or for loss, damage, injury or inconvenience relating to the cancellation, alteration, delay or diversion of a service. For any feedback, please e-mail comments@onwardtravelposters.com

Scan this code with your mobile for full station information.