



# Coventry Station

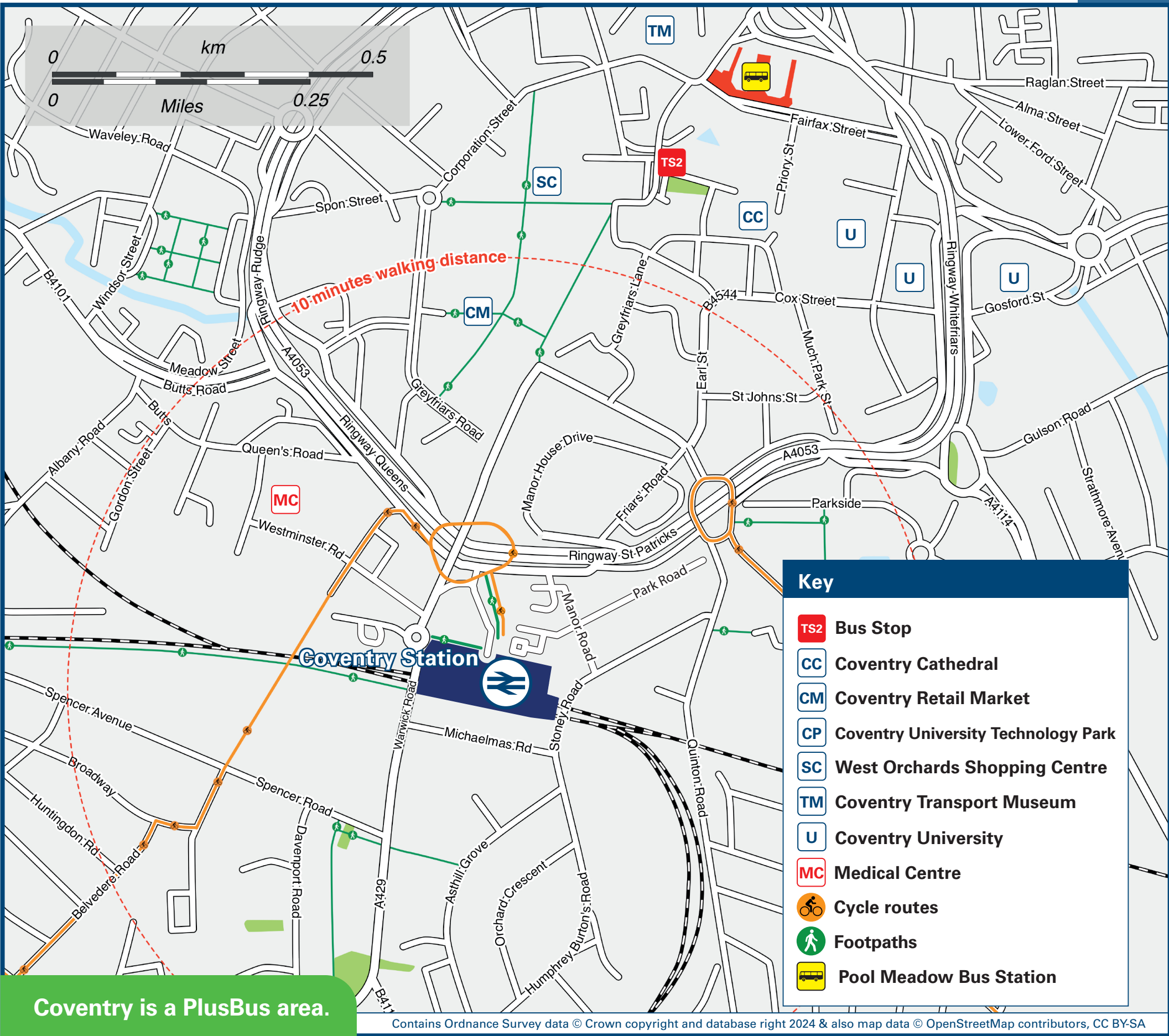
## Onward Travel Information

### Buses and Taxis



Rail replacement coach services can be found at the bus interchange, stops RR1 and RR2 see map above.

### Local area map



**PlusBus** is a discount price 'bus pass' that you buy with your train ticket. It gives you unlimited bus travel around your chosen town, on participating buses. Visit [www.plusbus.info](http://www.plusbus.info)

### Main destinations by bus



DESTINATION	BUS ROUTES	BUS STOP	DESTINATION	BUS ROUTES	BUS STOP	DESTINATION	BUS ROUTES	BUS STOP
Ansty Park	X30	WR 4	Hersall Common	11	WR 2, WR 6	Westwood Heath	87, 87A*	WR 6
Baginton	24+, 25+	WR 6	Kenilworth	11, 24+, X17	WR 6	Whoberley (Herald Avenue)	11	WR 2, WR 6
Balsall Common	87, 87A*	WR 6	Leamington Spa	11, X17	WR 6	Wyken Green (Ansty Road)	9	WR 5
Burton Green	87, 87A*	WR 6	Princethorpe	25+	WR 6			
Canley (Kirby Corner Road)	11, 87, 87A*	WR 6	Ryton	25+	WR 6			
Cannon Park	11, 87, 87A*	WR 6	Stivichall	9	WR 6			
Coventry Arena	3#	City Centre TS 2	Stoneleigh (& Stoneleigh Park)	24+	WR 6			
Coventry City Centre	9, 12X, 24+, 25+, 87, 87A*	WR 5	Stretton	25+	WR 6			
	11, X30	WR 4	Tile Hill (South)	87, 87A*	WR 6			
	X17	WR 3	Upper Stoke	9	WR 5			
Earlsdon	11	WR 2, WR 6	University Hospital (Walsgrave)	9	WR 5			
Fen End (Jaguar Land Rover)	87, 87A*	WR 6	University of Warwick	11, 12X, 87, 87A*	WR 6			
Finham	9	WR 6	Wainbody	9	WR 6			
	9	WR 5	War Memorial Park (Kenilworth Road)	12X, 87, 87A*, X17	WR 6			
Gosford Green	X30	WR 4	War Memorial Park (Park & Ride Car Park)	X17	WR 6			
Green Lane	9	WR 6	Warwick (for Warwick Castle)	X17	WR 6			

**Notes**

- PlusBus destination, please see below for details.
- Bus routes 9, 11, 12X and X17 operate daily.
- Bus route X30 operates every 30 minutes daytime and early evenings Mondays to Fridays only.
- For bus times and details of additional bus services from Pool Meadow bus station and other city centre bus stops, please contact Traveline on 0871 200 22 33.
- Direct trains operate to this destination from this station.
- It's a 15 to 20 minutes walk from this station to Coventry City Centre for Pool Meadow bus station and other city centre bus stops, Coventry University and Shopping area, see maps for walking routes.
- + Bus routes 24 and 25 operate limited journeys Mondays to Saturdays only.
- \* Bus route 87A operates limited early morning and evening journeys Mondays to Fridays only.
- # Take any bus to Coventry City Centre and change buses for bus route 3 from Trinity Street stop (TS3)

### Taxis

Coventry is a major station where taxis are usually available on a rank. Advance booking is not normally necessary, unless arriving early in the morning or late at night. Operators who may accept bookings include: (Inclusion of this number doesn't represent any endorsement of the taxi firm)

**Allens Taxis**  
024 7655 5555

**Central Taxis (West Midlands)**  
024 7677 7777

**Lewis Taxis**  
024 7666 6666

### Further information about all onward travel

<b>Local Cycle Info</b> <a href="http://coventry.gov.uk">coventry.gov.uk</a> For more information about cycle routes.	<b>National Cycle Info</b> <a href="http://sustrans.org.uk">sustrans.org.uk</a> Sustrans is the UK's leading sustainable transport charity.	<b>Bus Times</b> See timetable displays at bus stops. <a href="http://www.traveline.info">www.traveline.info</a> 0871 200 22 33 calls cost 15p per minute plus your phone company's access charge	<b>NextBuses</b> <b>Find the bus times for your stop.</b> Search for a bus stop by entering a postcode, street & town or a stop name & town.	<b>PlusBus</b> <b>plusbus.info</b> A discount price 'bus pass' that you buy with your train ticket. It gives you unlimited bus travel around your chosen town, on participating buses.
-----------------------------------------------------------------------------------------------------------------------------	---------------------------------------------------------------------------------------------------------------------------------------------------	---------------------------------------------------------------------------------------------------------------------------------------------------------------------------------------------------------------	----------------------------------------------------------------------------------------------------------------------------------------------------	----------------------------------------------------------------------------------------------------------------------------------------------------------------------------------------------

### National Rail Enquiries

<b>Online</b> <a href="http://nationalrail.co.uk">nationalrail.co.uk</a>	<b>NRE App</b> Free National Rail Enquiries app for iOS and Android	<b>Social Media</b> <a href="https://facebook.com/nationalrailenq">facebook.com/nationalrailenq</a> @nationalrailenq	<b>Alert Me</b> You can sign up to Alert Me messages on the National Rail Enquiries website where you can receive train and platform notifications directly to your smart phone. <a href="http://nationalrail.co.uk/alertme">nationalrail.co.uk/alertme</a>	<b>Contact Centre</b> 03457 48 49 50 Calls cost no more than calls to geographic numbers (01 or 02) and may be recorded.	<b>PlusBike</b> <a href="http://nationalrail.co.uk/plusbike">nationalrail.co.uk/plusbike</a> For more information.
-----------------------------------------------------------------------------	------------------------------------------------------------------------	----------------------------------------------------------------------------------------------------------------------------	-------------------------------------------------------------------------------------------------------------------------------------------------------------------------------------------------------------------------------------------------------------------	--------------------------------------------------------------------------------------------------------------------------------	--------------------------------------------------------------------------------------------------------------------------



**National Rail**  
Britain's train companies working together



This poster shows details of popular destinations and main, frequent bus routes. Additional services may run, so please check with Traveline or see posters at local bus stops. Whilst considerable care has been taken to ensure the information contained on this poster is correct and accurate, National Rail cannot accept responsibility for any loss or inconvenience caused by any errors or omissions, or for loss, damage, injury or inconvenience relating to the cancellation, alteration, delay or diversion of a service. For any feedback, please e-mail [comments@onwardtravelposters.com](mailto:comments@onwardtravelposters.com)

Scan this code with your mobile for full station information.