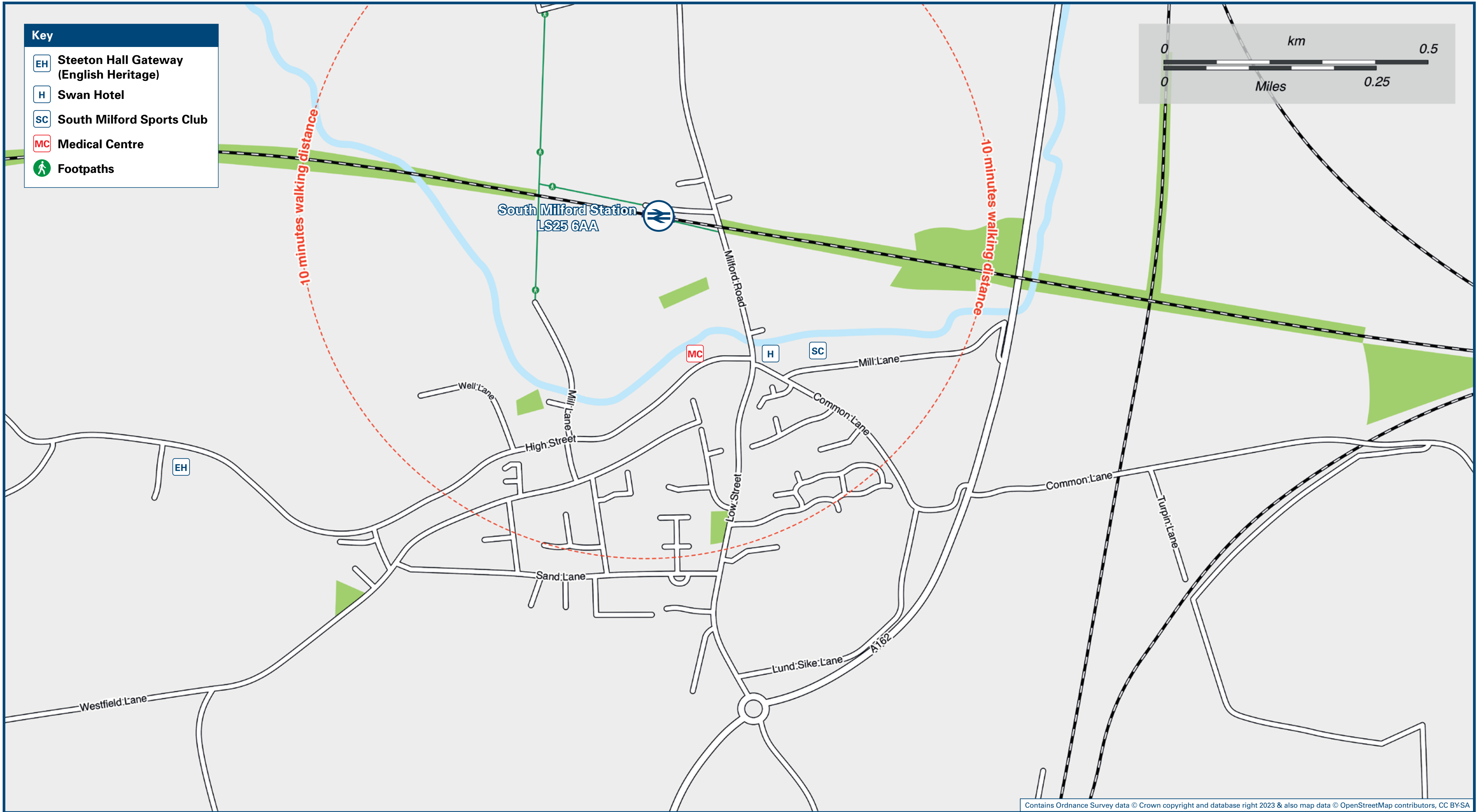




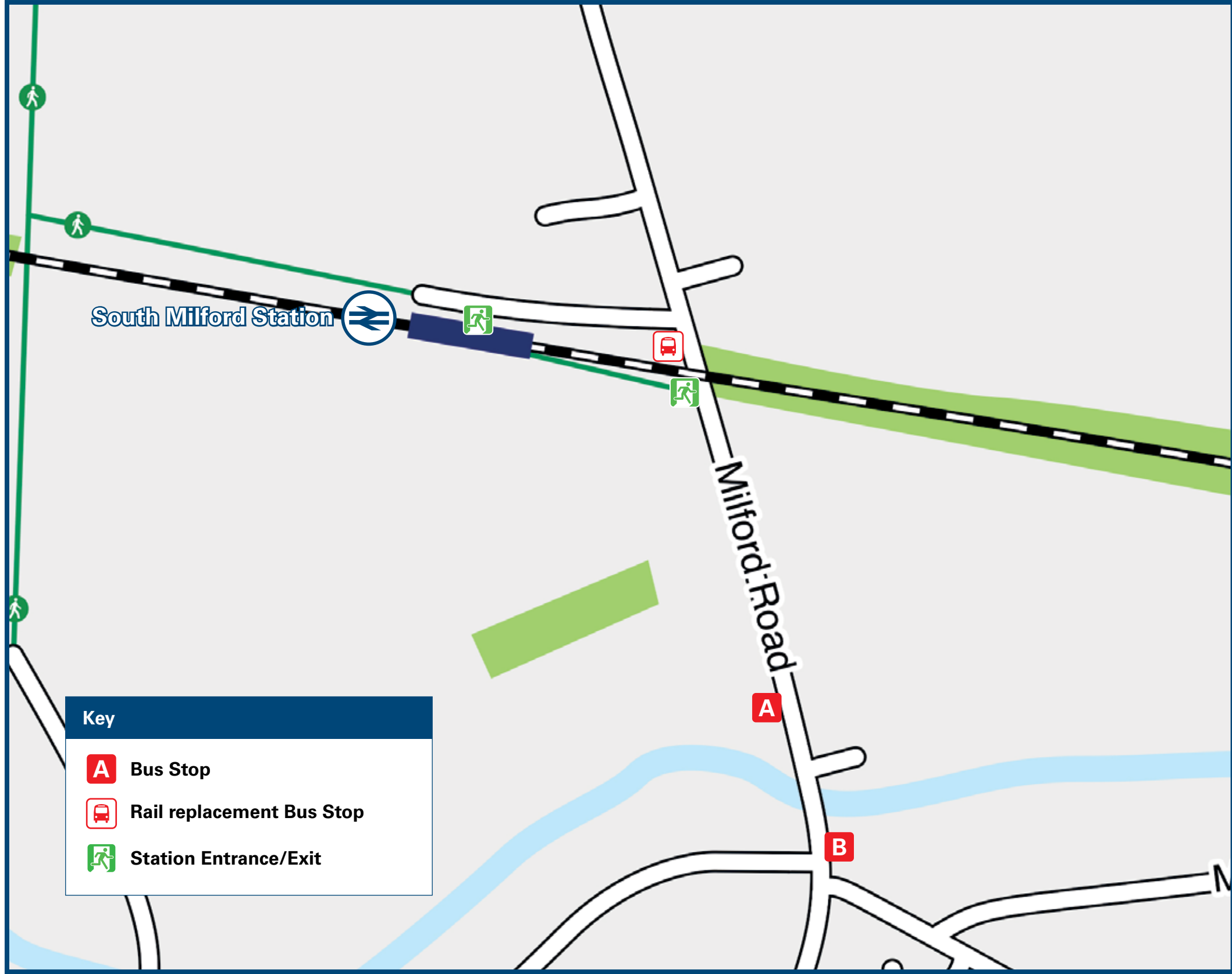
South Milford Station

Onward Travel Information

Local area map



Buses



Rail replacement transport pick up/drop off at the bus stops on Milford Road at the bottom of the station approach road.

Main destinations by bus

DESTINATION	BUS ROUTES	BUS STOP
Brotherton	493	B
Bryam Park	493	B
Burton Salmon	493	B
Cross Gates (for Shopping Centre) ☺	164	A
Fairburn	493	B
Ferrybridge	493	B
Garforth ☺	164	A
Hambleton	64, 164	B
Hillam	493	B
Knottingley	493	B
Leeds ☺	164	A
Micklefield ☺	164	A
Monk Fryston	64, 164, 493	B
Pontefract	493	B
Selby	64, 164	B
Sherburn in Elmet ☺	64, 164, 493	A
Thorpe Willoughby	64, 164	B

Notes

Bus routes 64, 164 and 493 operate Mondays to Saturdays. No service on Sundays or Bank Holidays. For bus times please see bus stop timetables or contact Traveline on 0871 200 22 33.

☺ Direct trains operate to this destination from this station.

Taxis

South Milford Station has no taxi rank or cab office. Advance booking is essential, please consider using the following local operators: (Inclusion of this number doesn't represent any endorsement of the taxi firm)

Elmet Private Hire
07743 498 420

Oz Travel
01977 683 399

Rumfords Private Hire
01977 689 040

Further information about all onward travel

Local Cycle Info	National Cycle Info	Bus Times	NextBuses	PlusBus
www.northyorks.gov.uk/roads-parking-and-travel/roads-and-pavements/cycle-lanes-and-routes For more information about cycle routes.	sustrans.org.uk Sustrans is the UK's leading sustainable transport charity.	See timetable displays at bus stops. www.traveline.info 0871 200 22 33 calls cost 15p per minute plus your phone company's access charge	 Find the bus times for your stop. Search for a bus stop by entering a postcode, street & town or a stop name & town.	 plusbus.info A discount price 'bus pass' that you buy with your train ticket. It gives you unlimited bus travel around your chosen town, on participating buses.

National Rail Enquiries

Online	NRE App	Social Media	Alert Me	Contact Centre	PlusBike
nationalrail.co.uk	Free National Rail Enquiries app for iOS and Android	facebook.com/nationalrailenq @nationalrailenq	You can sign up to Alert Me messages on the National Rail Enquiries website where you can receive train and platform notifications directly to your smart phone. nationalrail.co.uk/alertme	03457 48 49 50 Calls cost no more than calls to geographic numbers (01 or 02) and may be recorded.	nationalrail.co.uk/plusbike For more information.



This poster shows details of popular destinations and main, frequent bus routes. Additional services may run, so please check with Traveline or see posters at local bus stops. Whilst considerable care has been taken to ensure the information contained on this poster is correct and accurate, National Rail cannot accept responsibility for any loss or inconvenience caused by any errors or omissions, or for loss, damage, injury or inconvenience relating to the cancellation, alteration, delay or diversion of a service. For any feedback, please e-mail comments@onwardtravelposters.com

Scan this code with your mobile for full station information.