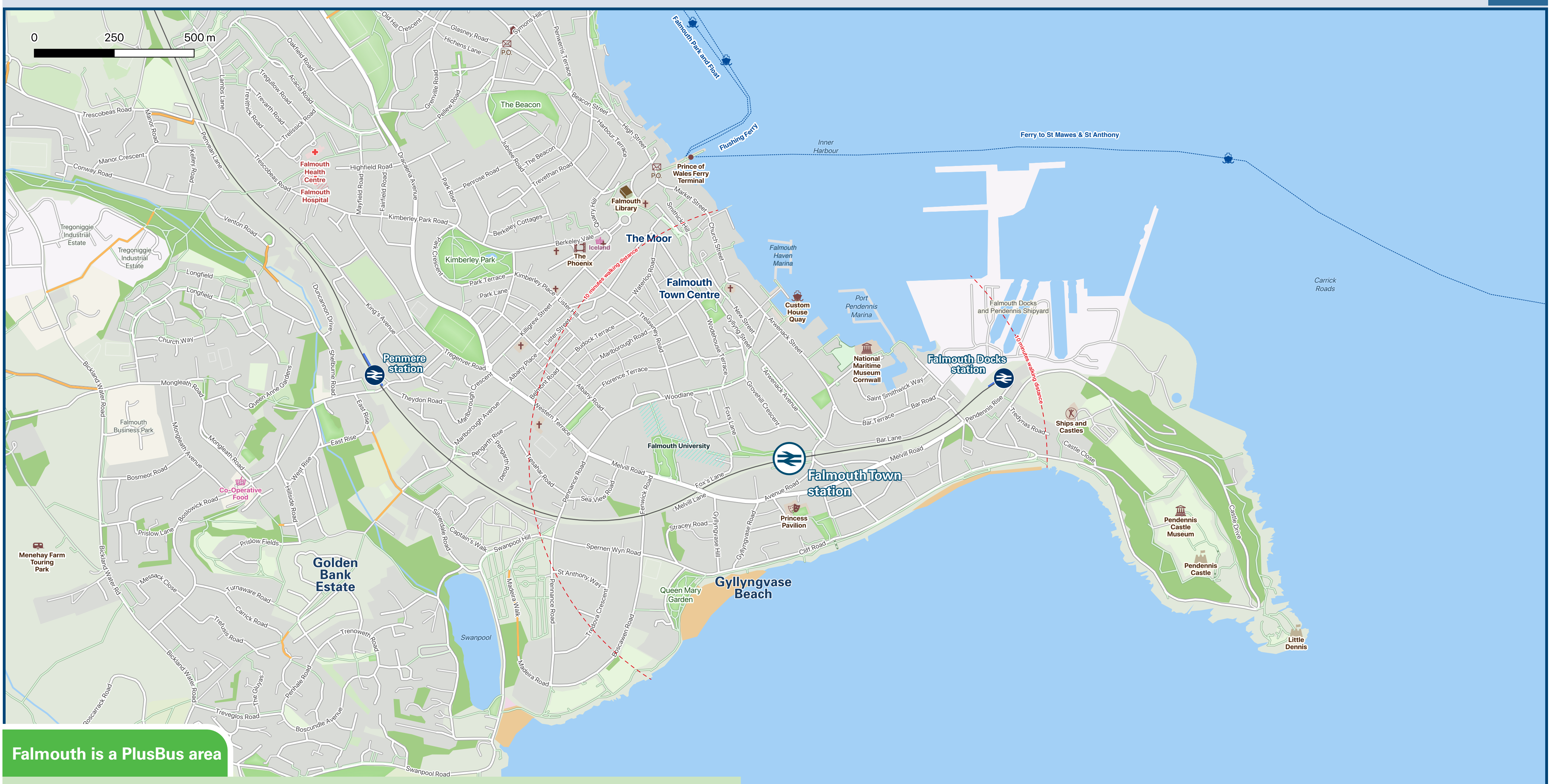




Falmouth Town Station

Onward Travel Information

Local area map



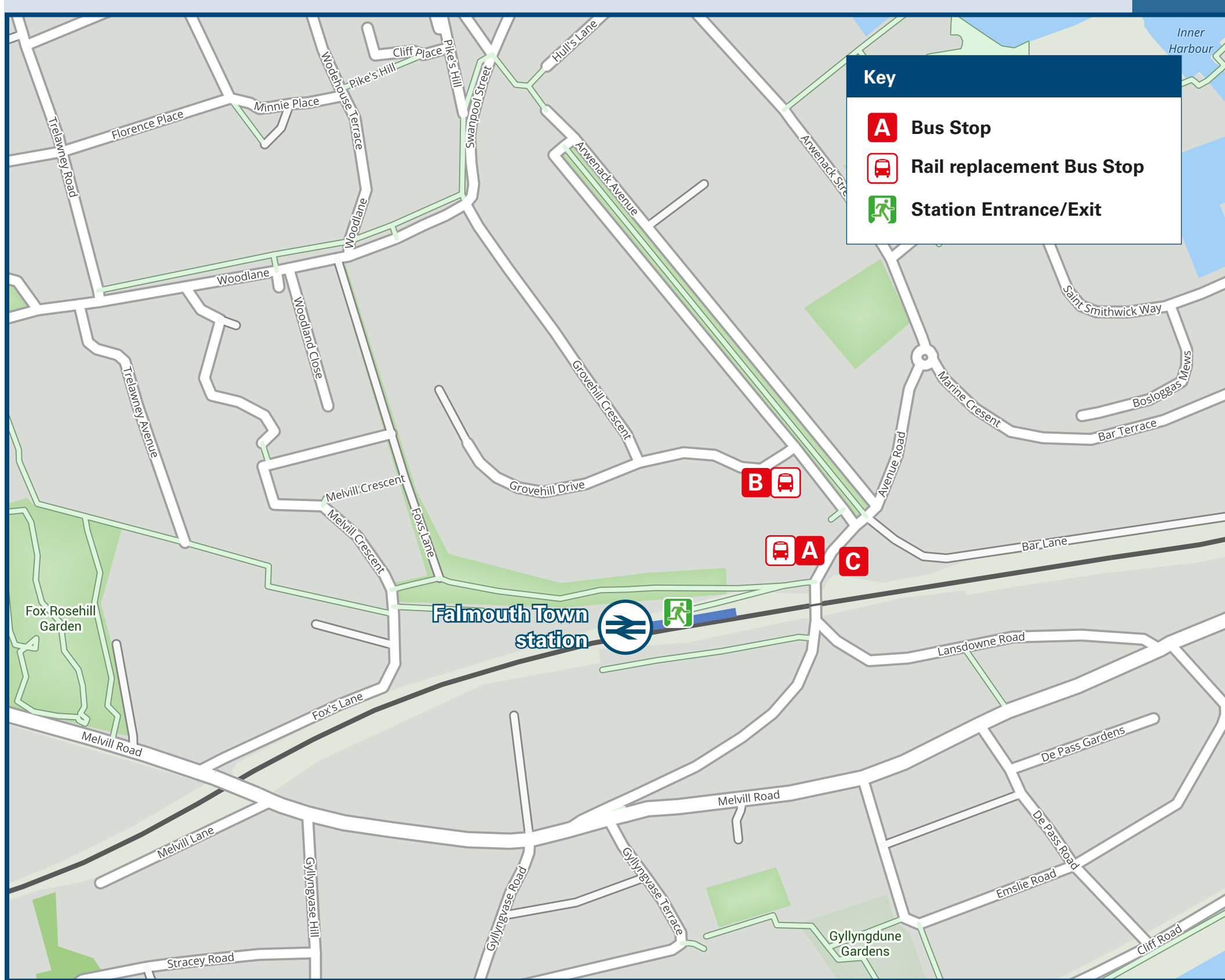
Falmouth is a PlusBus area



Add **PlusBus** to your train ticket—now available on eTicket from leading rail ticketing apps—for unlimited bus travel in the **PlusBus** zone in your destination town or city. Visit www.plusbus.info

Key: Cycle route Footpath

Buses



Key

- Bus Stop
- Rail replacement Bus Stop
- Station Entrance/Exit

Rail replacement buses/coaches will depart from the bus stop on Avenue Road.

Main destinations by bus

(Data correct at January 2026)

DESTINATION	BUS ROUTES	BUS STOP
● Boslowick (for Swanpool Beach)	67	A
● Castle Drive (for Pendennis Castle)	67	A
	15 minutes walk from this station (see Local area map)	
● Falmouth (Town Centre/The Moor)	60	B
	67	A
	10 minutes walk from this station (see Local area map)	
● Falmouth University (Wood Lane Campus)	60	B
	10 minutes walk from this station (see Local area map)	
● Gyllyngvase Beach	67	A

Notes

- **PlusBus** destination, please see below for details.
- Bus route 60 operates every 20 minutes Monday to Saturday daytime.
- Bus route 67 operates a limited daytime service on Mondays to Saturdays, only. No evenings or Sundays service.
- For bus times and days of operation please contact TraveLine on www.traveline.info or call: 0871 200 22 33



Taxis

This station has no taxi rank or cab office. Advance booking is essential, please consider using the following local operators: (Inclusion of this number doesn't represent any endorsement of the taxi firm)

Abacus & Falmouth Taxis
01326 212 141

Falmouth and Penryn Radio
01326 313 131

JJs Taxis Falmouth
01326 755 576

Further information about all onward travel

Local Cycle Info cornwall.gov.uk <small>For more information about cycle routes.</small>	National Cycle Info walkwheelcycletrust.org.uk	Bus Times <small>See timetable displays at bus stops.</small> 	PlusBus plusbus.info <small>PlusBus is a discount price 'bus pass' that you buy with your train ticket. It gives you unlimited bus travel around your chosen town, on participating buses. Visit www.plusbus.info</small>
--	--	---	--

National Rail Enquiries

Online nationalrail.co.uk	NRE App Free National Rail Enquiries app for iOS and Android	Social Media facebook.com/nationalrailenq @nationalrailenq	Alert Me <small>You can sign up to Alert Me messages on the National Rail Enquiries website where you can receive train and platform notifications directly to your smart phone.</small> nationalrail.co.uk/alertme	Contact Centre 03457 48 49 50 <small>Calls cost no more than calls to geographic numbers (01 or 02) and may be recorded.</small>	PlusBike nationalrail.co.uk/plusbike <small>For more information.</small>
---	---	--	--	--	---



This poster shows details of popular destinations and main, frequent bus routes. Additional services may run, so please check with TraveLine or see posters at local bus stops. Whilst considerable care has been taken to ensure the information contained on this poster is correct and accurate, National Rail cannot accept responsibility for any loss or inconvenience caused by any errors or omissions, or for loss, damage, injury or inconvenience relating to the cancellation, alteration, delay or diversion of a service. For any feedback, please e-mail comments@onwardtravelposters.com

Scan this code with your mobile for full station information.