



# Sunderland Station

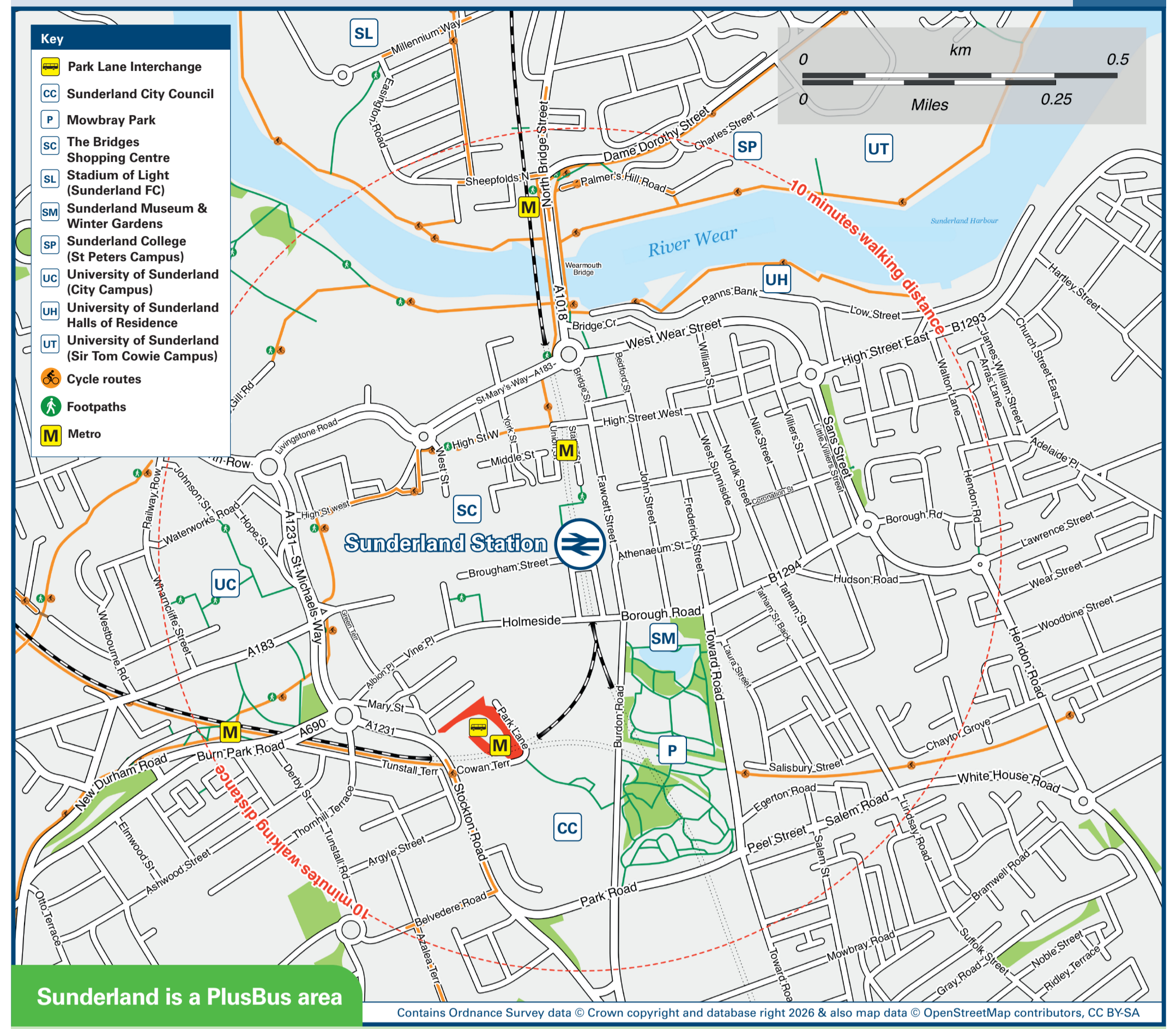
## Onward Travel Information

### Buses and Taxis and Metro



Rail Replacement buses will Pick Up / Drop Off in Fawcett Street, near to the Travel Centre entrance in Athenaeum Street, outside Wilkinsons.

### Local area map



Sunderland is a PlusBus area

Add PlusBus to your train ticket—now available on eTicket from leading rail ticketing apps—for unlimited bus travel in the PlusBus zone in your destination town or city. Visit [www.plusbus.info](http://www.plusbus.info)

### Main destinations by bus

(Data correct at March 2026)

DESTINATION	BUS ROUTES	BUS STOP
Ashbrooke	13, 23	4, 5
Barnes Park	3, 4, 33, 23, 32, X1#	4, 5, 5, 5
Boldon Colliery	9, 35, 36	1, 8, 1, 9
Carley Hill	16	2, 1
Castletown	35, 36	1, 9
Cleadon	24	1, 8
Concord (Washington)	56	1, 9
Dene Estate (Seaburn)	23	1, 8
Downhill	4, 13, 35, 36	2, 1, 1, 9
Doxford Park	4, 13, X1#	4, 5
Durham	20, 20A, 22, X20	Interchange
East Boldon	Metro Train (Green)	Platform 2
East Herrington	32, 20, 20A	Interchange
Enterprise Park	35, 36, 8, 599	1, 9, Interchange
Farrington	3, 4, 13, 20, 20A	4, Interchange
Fulwell (Seaburn Metro Station)	Metro Train (Green)	Platform 2
Gilley Law	23, 24, E2, E6	1, 8, 1, 7, 4
Grangetown	13, 22, 60, 61, 62, 62A, 63, X6	4, Interchange
Grindon	16	8
Hastings Hill	16	8
Hetton le Hole (Interchange)	32	5
Houghton-le-Spring	32	5
Hylton Castle	20, 20A, X20	Interchange
Hylton Lane Estate	3, 13, 35, 36, 56	2, 0, 1, 9
Hylton Red House	8, 20, 4, 16, 35, 36	8, 2, 2, 7, 1, 9

DESTINATION	BUS ROUTES	BUS STOP
Jarrow	9, 35, 36	1, 8, 1, 9
Low Moorsley	32	5
Millfield	Metro Train (Green)	Platform 1
Monkwearmouth Hospital	20, 10, 11	2, 2, 7, 7
Newcastle	E2, 9, 24	1, 7, 1, 8
Nissan Factory	Metro Train (Green)	Platform 2
Pallion	X24, 56	2, 2, 6, 1, 9
Park Lane Interchange	599	Interchange
Pennywell	Metro Train (Green)	Platform 1
Peterlee (Bus Station)	10, 11, 56	7, 1, 9
Roker	X24, 8, 61, 62, 62A	2, 2, 6, 6
Ryhope Village	20	8
Seaburn	2, 78	Interchange
Seaham (Interchange)	22, 61, X6	Interchange
Silksworth	E1	1, 7
South Bents	700	Interchange
South Hylton	22, 60, 61, 62, 62A, 63	Interchange
South Shields	Metro Train (Green)	Platform 2
Southwick	9, 23, 24, E1, E2, E6	1, 8, 1, 7
Springwell	60, X6	Interchange
Sunderland Crematorium	13, 33	4, 5
Sunderland Interchange (Park Lane)	E1, E2, E6	1, 7
	8	6
	24, E1, E2, E6	1, 8, 1, 7
	3, 13	2, 0
	4, 16	2, 1
	35, 36, 56	1, 9
	56	1, 9
	X24	2, 2, 6
	2, 8, 16, 61, 62, 62A, X24	6
	Metro Train (Green)	Platform 1

DESTINATION	BUS ROUTES	BUS STOP
Sunderland Royal Hospital	20, X24, 32	2, 2, 7, 2, 2, 6, 5
Sunderland Stadium of Light	8, 16, 61, 62, 62A, 10, 11, 20, 2, 78, 599	5, 6, 7
Thorney Close	Metro Train (Green)	Interchange
Town End Farm	Platform 2	3, 4, 9, 13, 16, 24, 35, 36, 56, E2
University of Sunderland	3, 4	1, 7, 1, 8, 1, 9, 2, 0, 2, 1
Vicarage Farm Estate	23	4
Washington	20, 20A	Interchange
West Boldon	13	2, 0
Whitburn	35, 36	1, 9
Witherwack	Metro Train (Green)	Platform 1
	X24	2, 2, 6
	8, 16, 61, 62, 62A, 2, 78, 700	6, Interchange
	33	5
	63	Interchange
	2, 8	Interchange
	9	1, 8
	35, 36	1, 9
	E1, E2, E6	1, 7
	16	2, 1

#### Notes

- PlusBus destination, please see below for details.
- For bus times and days of operation please see bus stop timetables or contact Nexus
- Plusbus tickets are valid within the Sunderland Plusbus zone on Stagecoach, Go-North East and Arriva only
- Plusbus tickets are not valid on the Tyne & Wear Metro system
- Direct trains operate to this destination from this station
- Change here for connecting National rail services.
- Direct Tyne & Wear Metro trains operate to this destination from this station
- # Bus route X1 operates a limited morning service on Mondays to Fridays, only.

### Taxis

Sunderland is a major station where taxis are usually available on a rank. Advance booking is not normally necessary, unless arriving early in the morning or late at night. Operators who may accept bookings include: (Inclusion of this number doesn't represent any endorsement of the taxi firm)

**City Taxis**  
0191 511 0111

**Station Taxis Sunderland Ltd**  
0191 555 5555

**Premier Taxis**  
0191 528 1111

### Further information about all onward travel

<b>Local Cycle Info</b> <a href="http://sunderland.gov.uk">sunderland.gov.uk</a> <small>For more information about cycle routes.</small>	<b>National Cycle Info</b> <a href="http://walkwheelcycletrust.org.uk">walkwheelcycletrust.org.uk</a>	<b>Bus Times</b> <a href="http://nexus.org.uk">nexus.org.uk</a> <small>For all public transport information in Tyne and Wear. Alternatively call 0191 20 20 747</small>	<b>PlusBus</b>  <a href="http://plusbus.info">plusbus.info</a> <small>PlusBus is a discount price 'bus pass' that you buy with your train ticket. It gives you unlimited bus travel around your chosen town, on participating buses. Visit <a href="http://www.plusbus.info">www.plusbus.info</a></small>
--	--	---	--

### National Rail Enquiries

<b>Online</b> <a href="http://nationalrail.co.uk">nationalrail.co.uk</a>	<b>NRE App</b> <small>Free National Rail Enquiries app for iOS and Android</small>	<b>Social Media</b> <a href="https://www.facebook.com/nationalrailenq">facebook.com/nationalrailenq</a> <a href="https://twitter.com/nationalrailenq">@nationalrailenq</a>	<b>Alert Me</b> <small>You can sign up to Alert Me messages on the National Rail Enquiries website where you can receive train and platform notifications directly to your smart phone.</small> <a href="http://nationalrail.co.uk/alertme">nationalrail.co.uk/alertme</a>	<b>Contact Centre</b> <b>03457 48 49 50</b> <small>Calls cost no more than calls to geographic numbers (01 or 02) and may be recorded.</small>	<b>PlusBike</b> <a href="http://nationalrail.co.uk/plusbike">nationalrail.co.uk/plusbike</a> <small>For more information.</small>
---	---	--	--	--	---



This poster shows details of popular destinations and main, frequent bus routes. Additional services may run, so please check with Traveline or see posters at local bus stops. Whilst considerable care has been taken to ensure the information contained on this poster is correct and accurate, National Rail cannot accept responsibility for any loss or inconvenience caused by any errors or omissions, or for loss, damage, injury or inconvenience relating to the cancellation, alteration, delay or diversion of a service. For any feedback, please e-mail [comments@onwardtravelposters.com](mailto:comments@onwardtravelposters.com)

Scan this code with your mobile for full station information.