



Greenfield Station

Onward Travel Information

Buses



Key

A

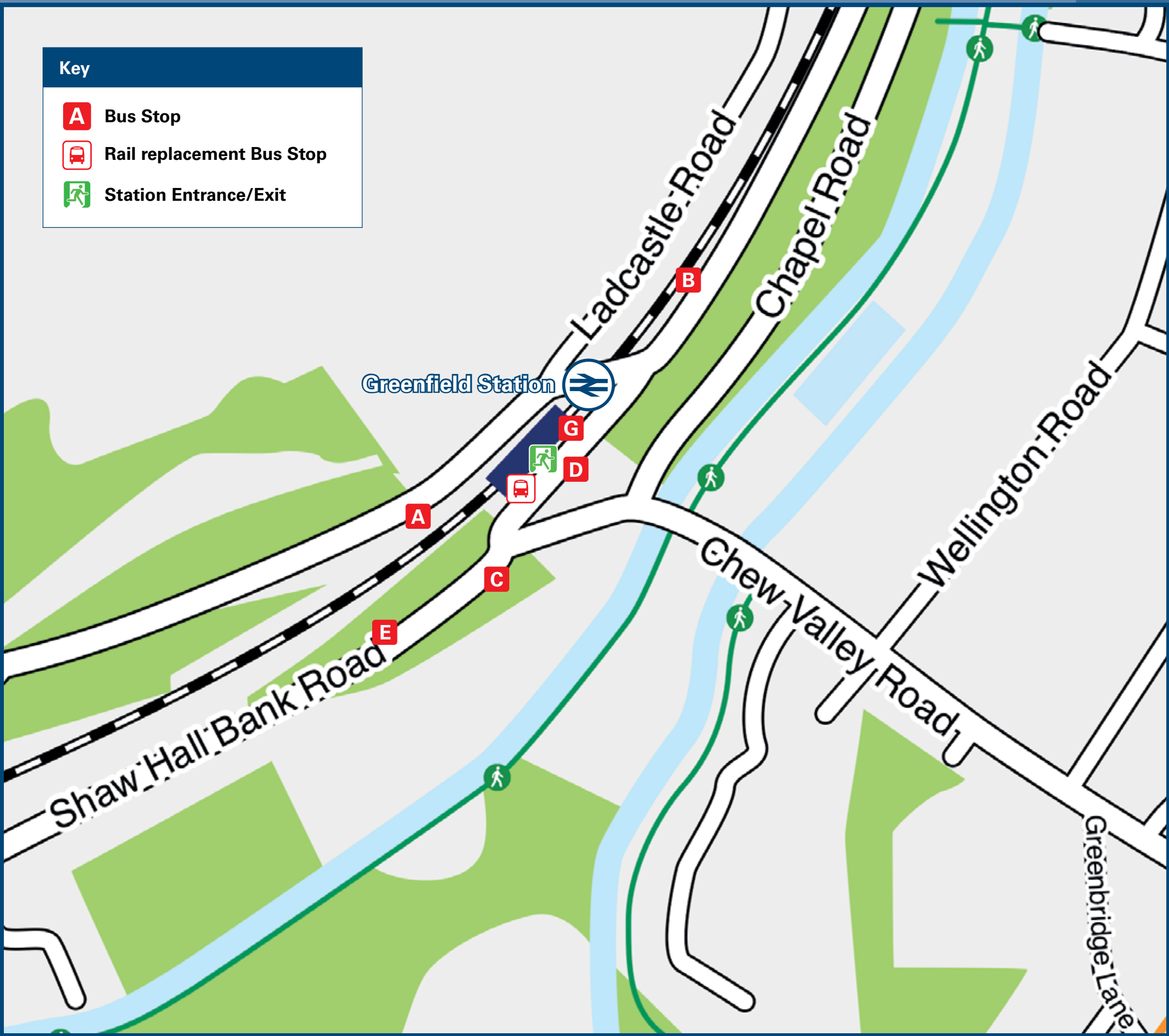
Bus Stop

B

Rail replacement Bus Stop

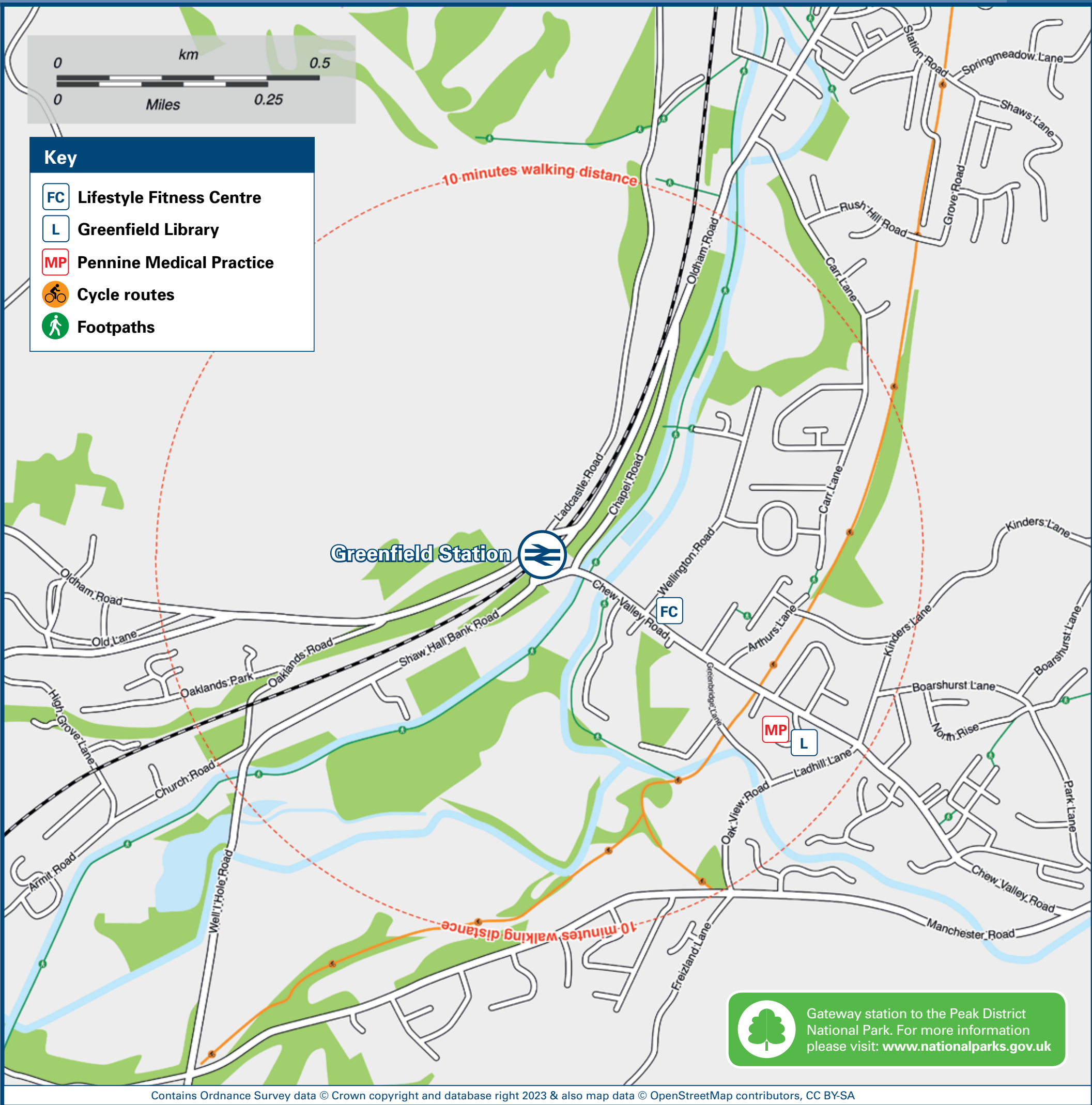
C

Station Entrance/Exit



Rail replacement buses depart from outside the station.

Local area map



Main destinations by bus

(Data correct at December 2023)



DESTINATION	BUS ROUTES	BUS STOP
Ashton-under-Lyne	350, 356+	D
	356	C
Austerlands	350	G
Brookbottom	350	D
	356	C
Carrcote	350, 356+	G
	356	E
Dacres	350	D
Delph	350, 356+	G
	356	E
Denshaw	356+	E, G
	184, 356+	B
Diggle	356+	E, G
	184, 350, 356+	B
Dobcross	350, 356+	G
	356	E
Friezland (Church)	356+	C, D
Grasscroft (Oldham Road)	84, 180, 184	A
	180	G
Greenfield (Carr Lane)	356	E

DESTINATION	BUS ROUTES	BUS STOP
Greenfield (Village Centre)	180, 350	D
	356	E
Grotton (Oldham Road)	180	G
	84, 180, 184	A
Hazelhurst	350	D
Hey Farm Estate	350	D
Heyrod Village	356+	C, D
Holmfirth	352*, 357*	D
Huddersfield	184	B
Lees	84, 180, 184	A
	180	G
Linthwaite	184	B
Manchester City Centre	84	A
Marsden	184	B
Micklehurst	350	D
Moorside	356+	E, G
	350, 356+	D
Mossley	356	C
	180, 350, 356+	G
Oldham	84, 180, 184	A
	356	E

DESTINATION	BUS ROUTES	BUS STOP
Quick	356+	C, D
Scouthead	350	G
Slaithwaite	184	B
Stalybridge	356+	C, D
Tameside General Hospital	350	D
Uppermill (for Saddleworth School)	84, 184, 350, 356+	B
	356	E
Upper Mossley (Market Place)	350	D
	356+	C, D

Notes

Bus routes 84, 184, 350 and 356 operate daily.
Bus route 180 operate Mondays to Saturdays.
For bus times please see bus stop timetables or contact Traveline on 0871 200 22 33.
Direct trains operate to this destination from this station.
It's a 10 to 15 minutes walk from this station to Greenfield village centre via Chew Valley Road, see Local area map.
* Bus routes 352 on Saturdays and 357 on Tuesdays only, operate a limited service from this station stop (D) to Holmfirth. Contact South Pennine Community Transport on 07593852259 for more information.
+ Limited journeys only from bus stops (B), (D) or (G), all journeys call at stops (C) and (E) please check timetables.
National Park Peak District National Park www.peakdistrict.gov.uk

Taxis

Greenfield station has no taxi rank or cab office. Advance booking is essential, please consider using the following local operators: (Inclusion of this number doesn't represent any endorsement of the taxi firm)

1st Choice County Cars
01457 878 878

Cartax Radio Cars
0161 633 8888

Tameside Taxis
0161 344 5555

Further information about all onward travel

Local Cycle Info oldham.gov.uk For more information about cycle routes.	National Cycle Info sustrans.org.uk Sustrans is the UK's leading sustainable transport charity.	Bus Times See timetable displays at bus stops. www.traveline.info 0871 200 22 33 calls cost 15p per minute plus your phone company's access charge	NextBuses Find the bus times for your stop. Search for a bus stop by entering a postcode, street & town or a stop name & town.	PlusBus plusbus.info A discount price 'bus pass' that you buy with your train ticket. It gives you unlimited bus travel around your chosen town, on participating buses.
---	---	---	---	---

National Rail Enquiries

Online nationalrail.co.uk	NRE App Free National Rail Enquiries app for iOS and Android	Social Media facebook.com/nationalrailenq @nationalrailenq	Alert Me You can sign up to Alert Me messages on the National Rail Enquiries website where you can receive train and platform notifications directly to your smart phone. nationalrail.co.uk/alertme	Contact Centre 03457 48 49 50 Calls cost no more than calls to geographic numbers (01 or 02) and may be recorded.	PlusBike nationalrail.co.uk/plusbike For more information.
---	--	---	---	--	--



This poster shows details of popular destinations and main, frequent bus routes. Additional services may run, so please check with Traveline or see posters at local bus stops. Whilst considerable care has been taken to ensure the information contained on this poster is correct and accurate, National Rail cannot accept responsibility for any loss or inconvenience caused by any errors or omissions, or for loss, damage, injury or inconvenience relating to the cancellation, alteration, delay or diversion of a service. For any feedback, please e-mail comments@onwardtravelposters.com

Scan this code with your mobile for full station information.