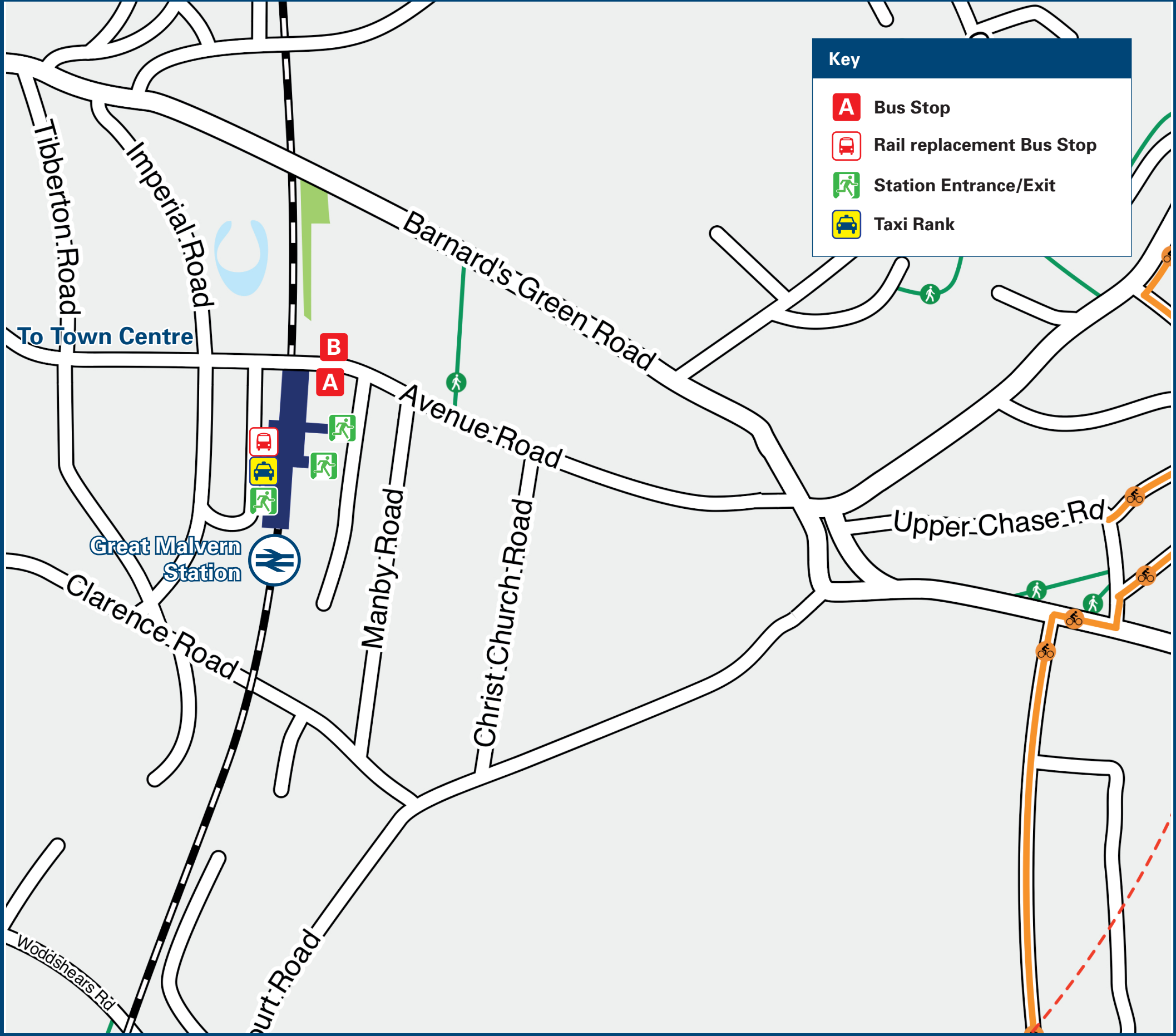




# Great Malvern Station

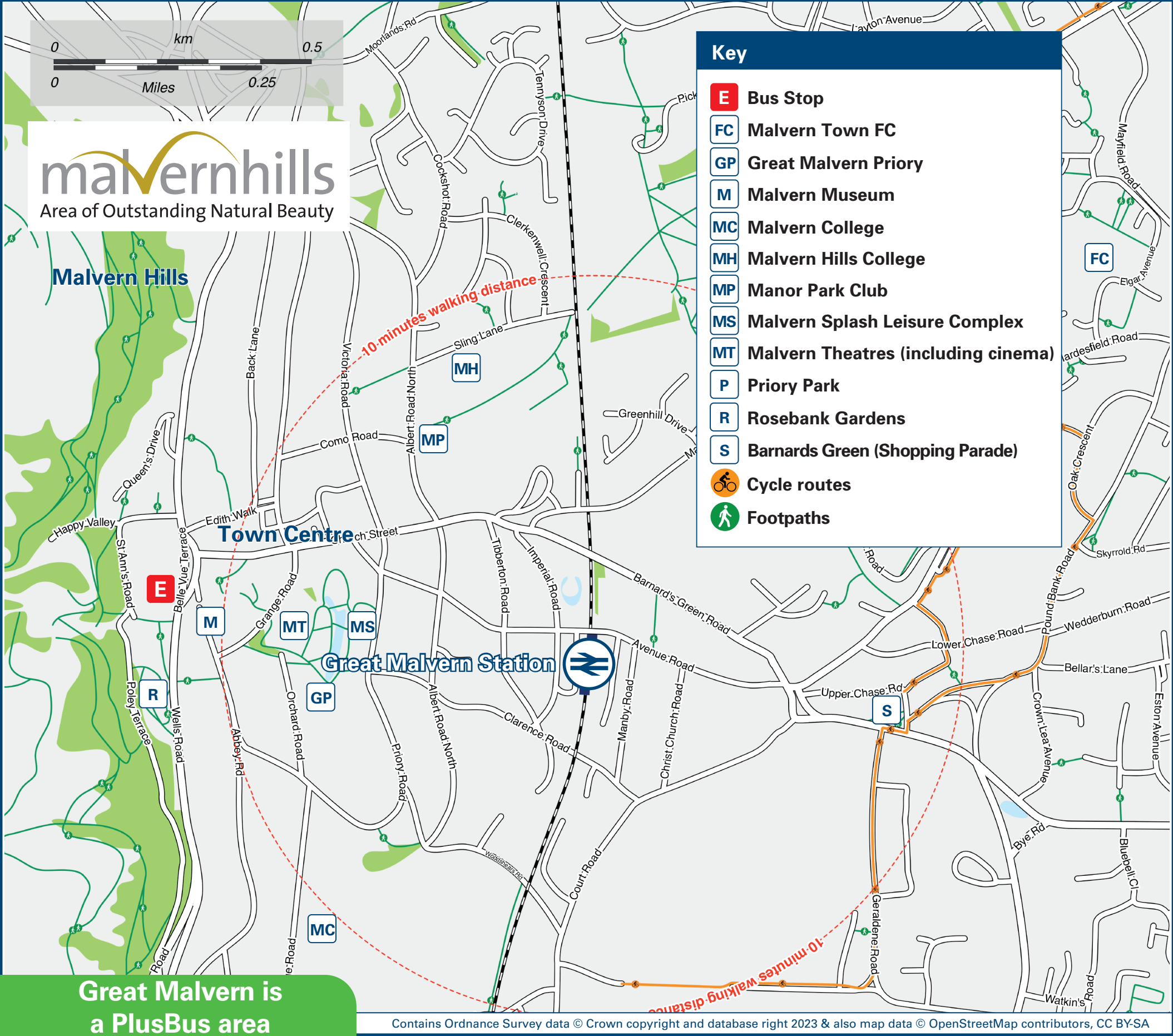
## Onward Travel Information

### Buses and Taxis



Rail replacement buses/coaches depart from the station car park, adjacent to platform 1.

### Local area map



**PlusBus** is a discount price 'bus pass' that you buy with your train ticket. It gives you unlimited bus travel around your chosen town, on participating buses. Visit [www.plusbus.info](http://www.plusbus.info)

### Main destinations by bus

(Data correct at August 2023)



| DESTINATION                               | BUS ROUTES | BUS STOP | DESTINATION                       | BUS ROUTES | BUS STOP | DESTINATION                     | BUS ROUTES | BUS STOP |
|---|------------|----------|-----------------------------------|------------|----------|---------------------------------|------------|----------|
| Bastonford                                | 44         | B        | Malvern Shopping Park (Morrisons) | 42         | A        | Upper Howsell                   | 44         | A        |
| Colwall                                   | 675, 676   | E+       |                                   | 44         | B        | Upper Wyche (Fruitlands)        | 42         | B        |
| Enigma Business Park                      | 42         | A        | Malvern Vale                      | 44         | A        | Upper Wyche (West Malvern Road) | 675, 676   | E+       |
| Fruitlands (Cherry Tree Drive)            | 42         | B        | Newland                           | 44         | B        | Wellington Heath                | 675        | E+       |
| Langlands Stadium (For Malvern Town F.C.) | 42         | A        | North Malvern (Trinity Road)      | 675, 676   | E+       | West Malvern (The Dingle)       | 675, 676   | E+       |
|   | 44         | B        | Poolbrook                         | 42         | B        | Worcester (City Centre)         | 44         | B        |
| Ledbury                                   | 675, 676   | E+       |                                   | 42         | A        |                                 |            |          |
| Link Top (Malvern)                        | 42, 44     | A        | Pound Bank Road                   | 44         | B        |                                 |            |          |
| Lower Wick                                | 44         | B        | Powick                            | 44         | B        |                                 |            |          |
| Lower Wyche (Peachfield Road)             | 42         | B        |                                   | 42         | A        |                                 |            |          |
|   | 42         | A        | Sherrard's Green                  | 44         | B        |                                 |            |          |
| Malvern Link                              | 44         | B        | Upper Colwall                     | 675, 676   | E+       |                                 |            |          |

**Notes**

Bus routes 42, 44, 675 and 676 operate Mondays to Saturdays. No service on Sundays and Public Holidays.

For bus times and other bus service enquiries, please contact Traveline on 0871 200 22 33 or contact the bus operator (see below):

First Worcestershire (for bus routes 44, 675 & 676) call 0345 646 0707 or LMS Travel (for bus route 42) call 01905 25 25 2.

+ Bus routes 675 and 676 operate from Malvern Town Centre/ Rosebank Gardens stop E - 15 minutes walk from this station, see local area map.

Direct trains operate to this destination from this station.

AONB Malvern Hills (AONB) [www.malvernhillsaonb.org.uk](http://www.malvernhillsaonb.org.uk)

### Taxis

Great Malvern station is served by a taxi rank or cab office. Check availability before travelling, and pre-book if necessary. Please consider using the following local operators: (Inclusion of this number doesn't represent any endorsement of the taxi firm)

**Speedline Malvern**  
Taxis 07955 220 082

**Access Taxis**  
07749 621 594

**Smith Taxis**  
01684 586 686

### Further information about all onward travel

|   |   |  |  |   |
|---|---|--|--|---|
| <b>Local Cycle Info</b><br><a href="http://malvernhill.gov.uk">malvernhill.gov.uk</a><br>For more information about cycle routes. | <b>National Cycle Info</b><br><a href="http://sustrans.org.uk">sustrans.org.uk</a><br>Sustrans is the UK's leading sustainable transport charity. | <b>Bus Times</b><br>See timetable displays at bus stops.<br><a href="http://www.traveline.info">www.traveline.info</a><br>0871 200 22 33<br>call cost 15p per minute plus your phone company's access charge | <b>NextBuses</b><br><b>Find the bus times for your stop.</b><br>Search for a bus stop by entering a postcode, street & town or a stop name & town. | <b>PlusBus</b><br><a href="http://plusbus.info">plusbus.info</a><br>A discount price 'bus pass' that you buy with your train ticket. It gives you unlimited bus travel around your chosen town, on participating buses. |
|---|---|--|--|---|

### National Rail Enquiries

|   |  |   |   |  |  |
|---|--|---|---|--|--|
| <b>Online</b><br><a href="http://nationalrail.co.uk">nationalrail.co.uk</a> | <b>NRE App</b><br>Free National Rail Enquiries app for iOS and Android | <b>Social Media</b><br>facebook.com/nationalrailenq<br>@nationalrailenq | <b>Alert Me</b><br>You can sign up to Alert Me messages on the National Rail Enquiries website where you can receive train and platform notifications directly to your smart phone.<br><a href="http://nationalrail.co.uk/alertme">nationalrail.co.uk/alertme</a> | <b>Contact Centre</b><br>03457 48 49 50<br>Calls cost no more than calls to geographic numbers (01 or 02) and may be recorded. | <b>PlusBike</b><br><a href="http://nationalrail.co.uk/plusbike">nationalrail.co.uk/plusbike</a><br>For more information. |
|---|--|---|---|--|--|



**National Rail**  
Britain's train companies working together

