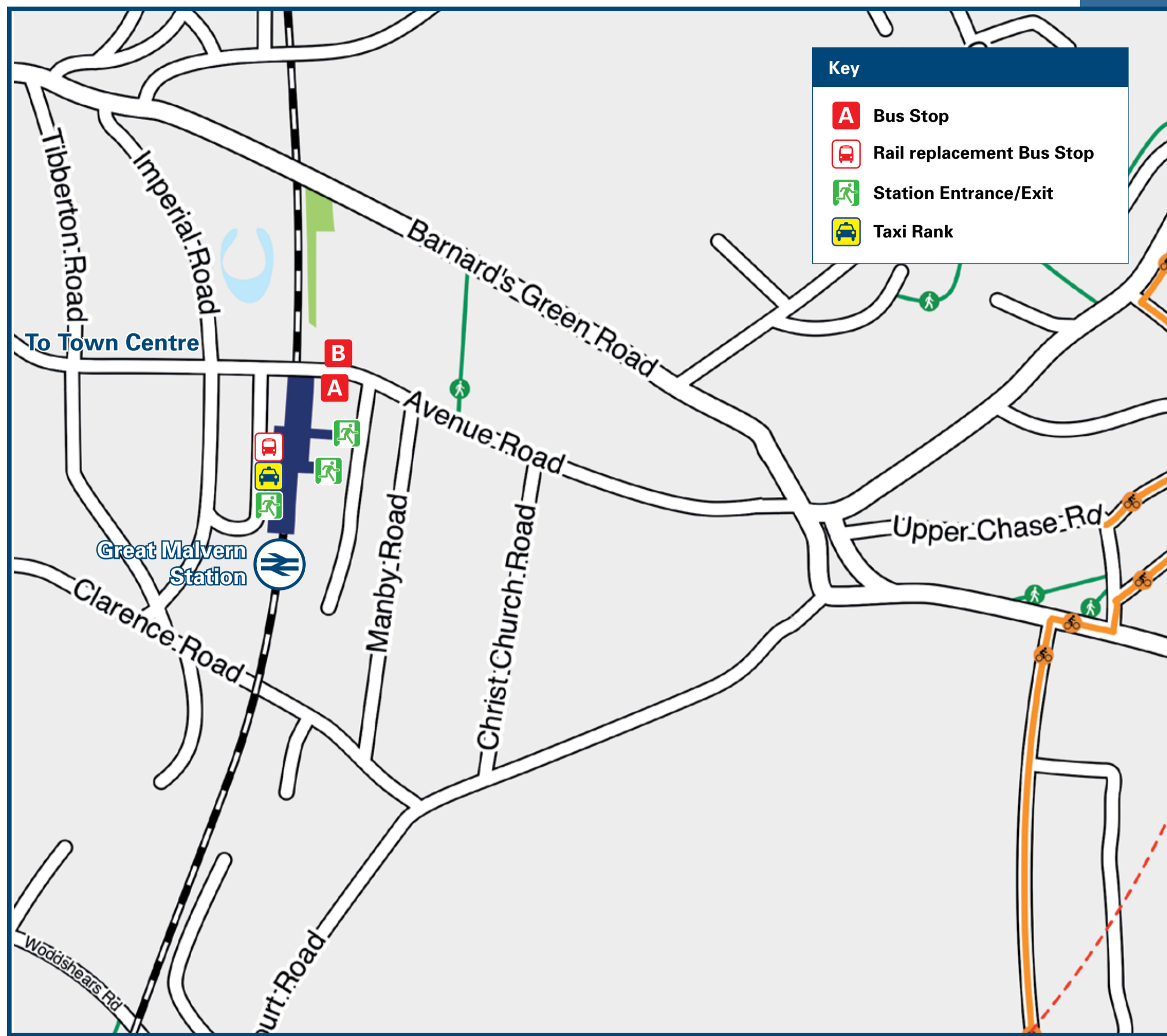




# Great Malvern Station

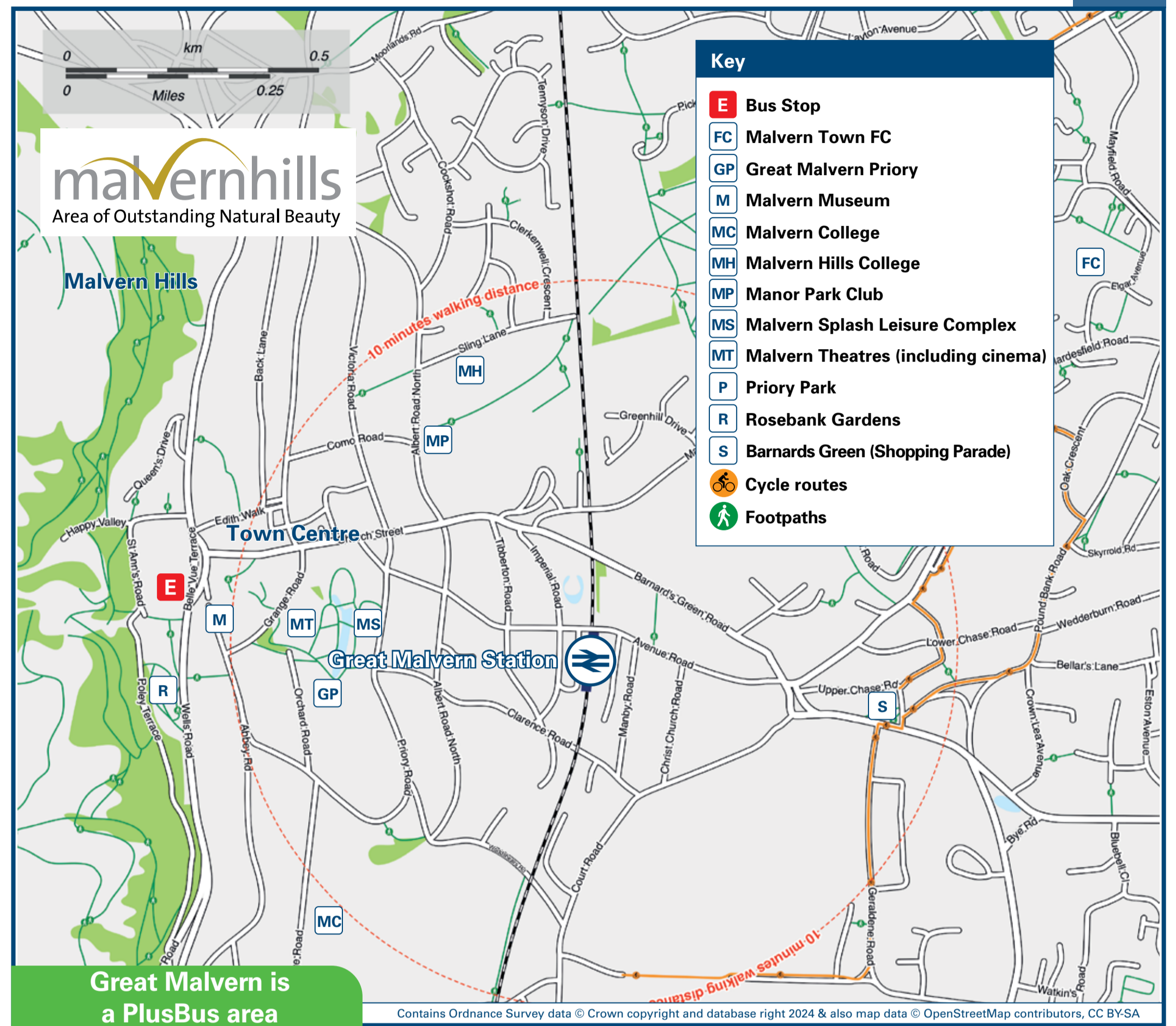
# Onward Travel Information

## Buses and Taxis



Rail replacement buses/coaches depart from the station car park, adjacent to platform 1.

## Local area map



PlusBus is a discount price 'bus pass' that you buy with your train ticket. It gives you unlimited bus travel around your chosen town, on participating buses. Visit [www.plusbus.info](http://www.plusbus.info)

## Main destinations by bus

(Data correct at July 2024)

DESTINATION	BUS ROUTES	BUS STOP
Bastonford	44	B
Colwall	675, 676	E+
Enigma Business Park	42	A
Fruitlands (Cherry Tree Drive)	42	B
Langlands Stadium (For Malvern Town F.C.)	42	A
	44	B
Ledbury	675, 676	E+
Link Top (Malvern)	42, 44	A
Lower Wick	44	B
Lower Wyche (Peachfield Road)	42	B
	42	A
Malvern Link	44	B

DESTINATION	BUS ROUTES	BUS STOP
Malvern Shopping Park (Morrisons)	42	A
	44	B
Malvern Vale	44	A
Newland	44	B
North Malvern (Trinity Road)	675, 676	E+
Poolbrook	42	B
	42	A
Pound Bank Road	44	B
Powick	44	B
	42	A
Sherrard's Green	44	B
Upper Colwall	675, 676	E+

DESTINATION	BUS ROUTES	BUS STOP
Upper Howsell	44	A
Upper Wyche (Fruitlands)	42	B
Upper Wyche (West Malvern Road)	675, 676	E+
Wellington Heath	675	E+
West Malvern (The Dingle)	675, 676	E+
Worcester (City Centre)	44	B

**Notes**

Bus routes 42, 44, 675 and 676 operate Mondays to Saturdays. No service on Sundays and Public Holidays.

For bus times and further information contact Traveline on 0871 200 22 33 or First Worcestershire (for bus routes 44, 675 & 676) call 0345 646 0707 or LMS Travel (for bus route 42) call 01905 25 25 2.

Direct trains operate to this destination from this station.

+ Bus routes 675 and 676 operate from Malvern Town Centre/ Rosebank Gardens stop E - 15 minutes walk from this station, see local area map.

AONB Malvern Hills (AONB) [www.malvernhillsaonb.org.uk](http://www.malvernhillsaonb.org.uk)

## Taxis

Great Malvern station is served by a taxi rank or cab office. Check availability before travelling, and pre-book if necessary. Please consider using the following local operators: (Inclusion of this number doesn't represent any endorsement of the taxi firm)

**Smith Taxis**  
01684 586 686

## Further information about all onward travel

<b>Local Cycle Info</b> <a href="http://malvernhillsgov.uk">malvernhillsgov.uk</a> <small>For more information about cycle routes.</small>	<b>National Cycle Info</b> <a href="http://sustrans.org.uk">sustrans.org.uk</a> <small>Sustrans is the UK's leading sustainable transport charity.</small>	<b>Bus Times</b> <small>See timetable displays at bus stops.</small>  <a href="http://www.traveline.info">www.traveline.info</a> <b>0871 200 22 33</b> <small>calls cost 12p per minute plus your phone company's access charge</small>	<b>NextBuses</b>  <b>Find the bus times for your stop.</b> <small>Search for a bus stop by entering a postcode, street &amp; town or a stop name &amp; town.</small>	<b>PlusBus</b> <b>plusbus.info</b> <small>A discount price 'bus pass' that you buy with your train ticket. It gives you unlimited bus travel around your chosen town, on participating buses.</small>
--	--	--	---	---

## National Rail Enquiries

<b>Online</b> <a href="http://nationalrail.co.uk">nationalrail.co.uk</a>	<b>NRE App</b> <b>Free National Rail Enquiries app for iOS and Android</b>	<b>Social Media</b> <a href="https://facebook.com/nationalrailenq">facebook.com/nationalrailenq</a> @nationalrailenq	<b>Alert Me</b> <small>You can sign up to Alert Me messages on the National Rail Enquiries website where you can receive train and platform notifications directly to your smart phone.</small> <a href="http://nationalrail.co.uk/alertme">nationalrail.co.uk/alertme</a>	<b>Contact Centre</b> <b>03457 48 49 50</b> <small>Calls cost no more than calls to geographic numbers (01 or 02) and may be recorded.</small>	<b>PlusBike</b> <a href="http://nationalrail.co.uk/plusbike">nationalrail.co.uk/plusbike</a> <small>For more information.</small>
---	---	--	--	--	---



This poster shows details of popular destinations and main, frequent bus routes. Additional services may run, so please check with Traveline or see posters at local bus stops. Whilst considerable care has been taken to ensure the information contained on this poster is correct and accurate, National Rail cannot accept responsibility for any loss or inconvenience caused by any errors or omissions, or for loss, damage, injury or inconvenience relating to the cancellation, alteration, delay or diversion of a service. For any feedback, please e-mail [comments@onwardtravelposters.com](mailto:comments@onwardtravelposters.com)

Scan this code with your mobile for full station information.