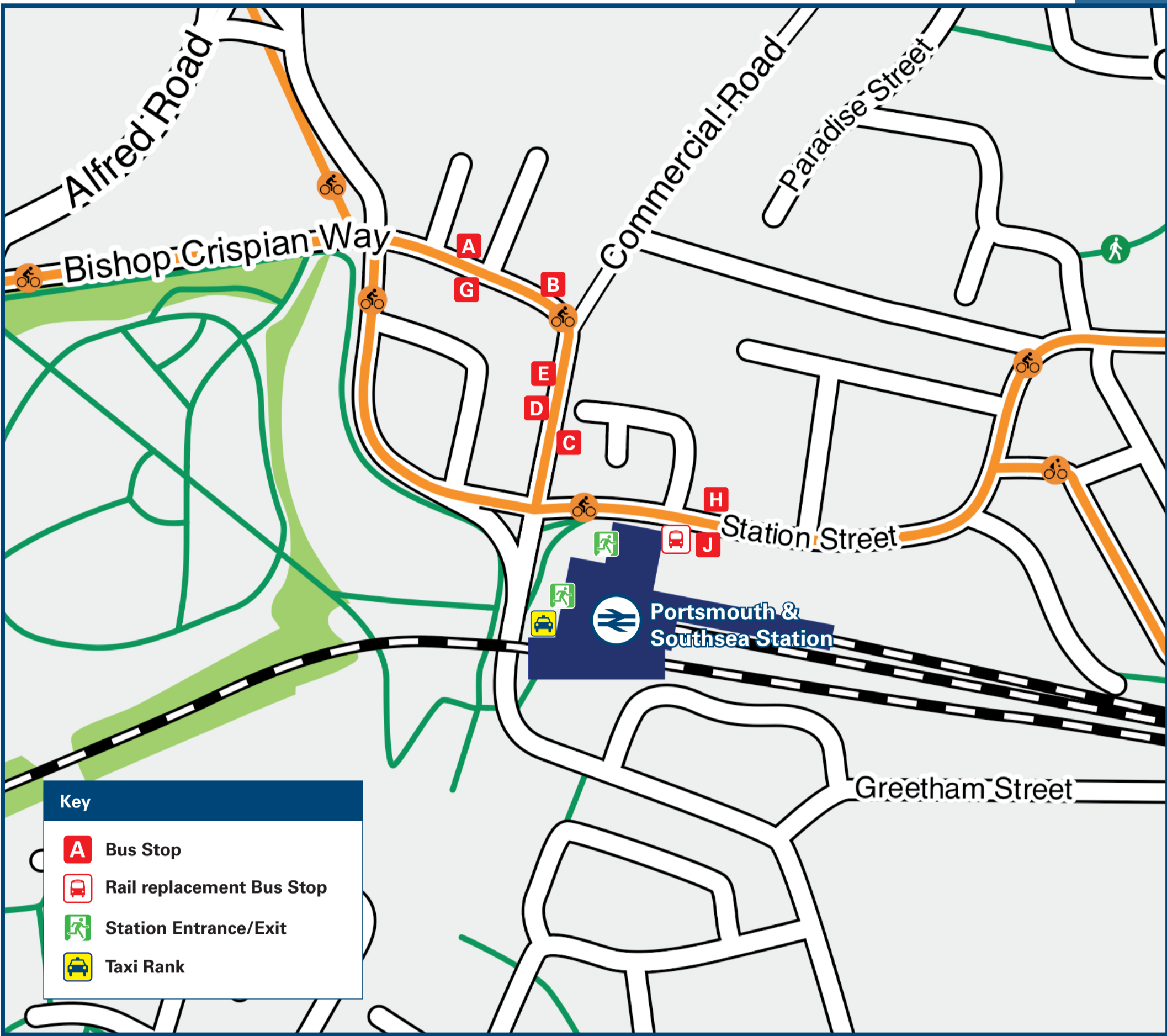




Portsmouth & Southsea Station

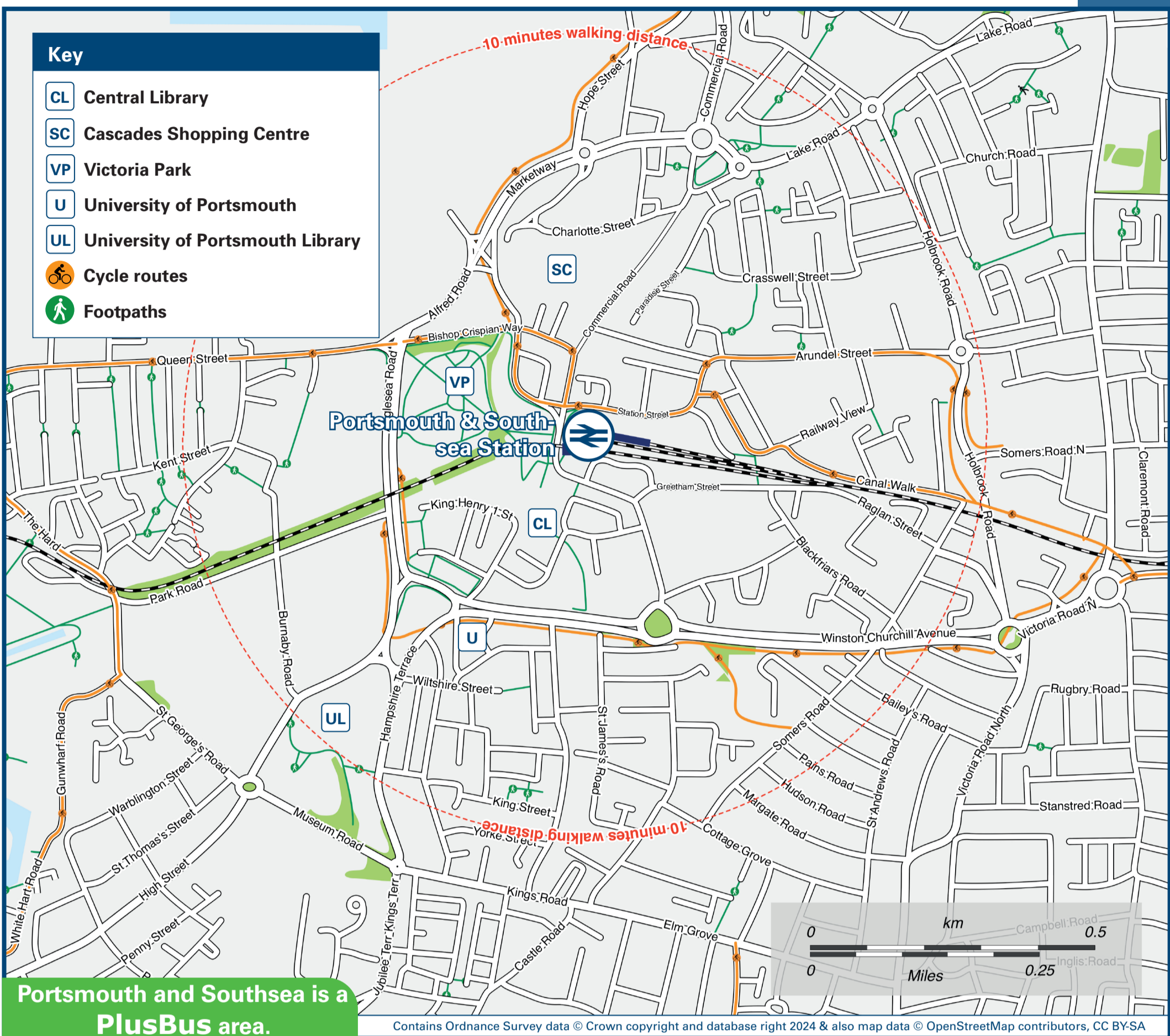
Onward Travel Information

Buses and Taxis



 Rail replacement buses depart from Station Street bus stop (J) at side of the Railway Station near Matalan car park.

Local area map



PlusBus is a discount price 'bus pass' that you buy with your train ticket. It gives you unlimited bus travel around your chosen town, on participating buses. Visit www.plusbus.info

Main destinations by bus



DESTINATION	BUS ROUTES	BUS STOP
● Anchorage Park	21	A, H
● Baffins Pond	14	A, H
● Buckland (Kingston Road)	3	E
	7, 23	D
● Copnor	2	B
	14, 21	A, H
● Cosham	2	B
	3	E
	7, 8, 20#, 23	D
● Drayton (Havant Road)	23	D
● Eastney (Health Centre)	1, 2	B
● Fareham	3, X4, X5	E
● Fratton Park (Portsmouth FC)	Direct Train (then 10 minutes walk from Fratton station)	
	1	B
	13	A, H
	2	B
	3	E
● Hilsea (Lido)	7, 8, 20#, 23, 700	D
● Locks Heath	X4, X5	D
● Mile End Road (for Charles Dickens Museum)	X4, X5	E
	8, 20#, 700	D
● Milton	13	A, H
	1, 2	B

DESTINATION	BUS ROUTES	BUS STOP
● North End (London Road)	3	E
	7, 23, 700	D
● Old Portsmouth (for Cathedral)	23, 700	C
	3	G
● Parks Gate	X4	D
● Paulsgrove	2	B
	3	E
● Portchester	3, X4, X5	E
● Portsmouth College	13, 14	A, H
	21	J, G
● Portsmouth Harbour*	1, 2, 3, 8, 20#, 21	G
	23, 700	C
● Portsmouth University	700	C
	Direct Train to Cosham (then 15 minutes walk)	
	2	B
	7, 8, 20#	D
	3	E
	H1 (to Hovertravel Terminal)**	C
	23 (Then a 5 minutes walk)	B, C
● Southsea Clarence Pier		
	23	C
● Southsea Duisburg Way	23	C

DESTINATION	BUS ROUTES	BUS STOP
● Southsea Common & Clarence Esplanade	23 (Then a 5 minutes walk)	B, C
● Southsea (Palmerston Road Shops)	3	G
	23	C
● Southsea (South Parade Pier & Seafront)	1	B
	23	C
	3	G
● Stamshaw (For International Port)	8, 20#, 700	D
	X4, X5	E
● St Mary's Hospital	2	B
● Titchfield Common	X4, X5	D
● Warsash	X5	D

Notes

All other bus routes run daily, Mondays to Sundays.

For bus times and days of operation please see bus information at bus stops, or contact Traveline.

☎ Direct trains operate to this destination from this Station.

* Portsmouth Harbour for ferries to Gosport & Isle of Wight, the Historic Dockyard and Gunwharf Quays.

** Hovertravel ferry to Ryde Isle of Wight.

Bus route 20 runs on Mondays to Saturdays, only. No Sunday service.

● **PLUSBUS** destination, please see below for details.

Taxis

Portsmouth & Southsea is a major station where taxis are usually available on a rank. Advance booking is not normally necessary, unless arriving early in the morning or late at night. Operators who may accept bookings include: (Inclusion of this number doesn't represent any endorsement of the taxi firm)

Aqua Cars 023 9265 4321

Driving Miss Daisy UK 0333 014 6211

Trust Taxi 07783 838 384

Further information about all onward travel

Local Cycle Info portsmouth.gov.uk For more information about cycle routes.	National Cycle Info sustrans.org.uk Sustrans is the UK's leading sustainable transport charity.	Bus Times See timetable displays at bus stops. www.travelinesw.com	NextBuses  Find the bus times for your stop. Search for a bus stop by entering a postcode, street & town or a stop name & town.	PlusBus  plusbus.info A discount price 'bus pass' that you buy with your train ticket. It gives you unlimited bus travel around your chosen town, on participating buses.
---	---	--	--	---

National Rail Enquiries

Online nationalrail.co.uk	NRE App Free National Rail Enquiries app for iOS and Android	Social Media  facebook.com/nationalrailenq  @nationalrailenq	Alert Me You can sign up to Alert Me messages on the National Rail Enquiries website where you can receive train and platform notifications directly to your smart phone. nationalrail.co.uk/alertme	Contact Centre 03457 48 49 50 Calls cost no more than calls to geographic numbers (01 or 02) and may be recorded.	PlusBike  nationalrail.co.uk/plusbike For more information.
---	--	--	---	---	--



National Rail
Britain's train companies working together



This poster shows details of popular destinations and main, frequent bus routes. Additional services may run, so please check with Traveline or see posters at local bus stops. Whilst considerable care has been taken to ensure the information contained on this poster is correct and accurate, National Rail cannot accept responsibility for any loss or inconvenience caused by any errors or omissions, or for loss, damage, injury or inconvenience relating to the cancellation, alteration, delay or diversion of a service. For any feedback, please e-mail comments@onwardtravelposters.com

Scan this code with your mobile for full station information.