



Portsmouth & Southsea Station

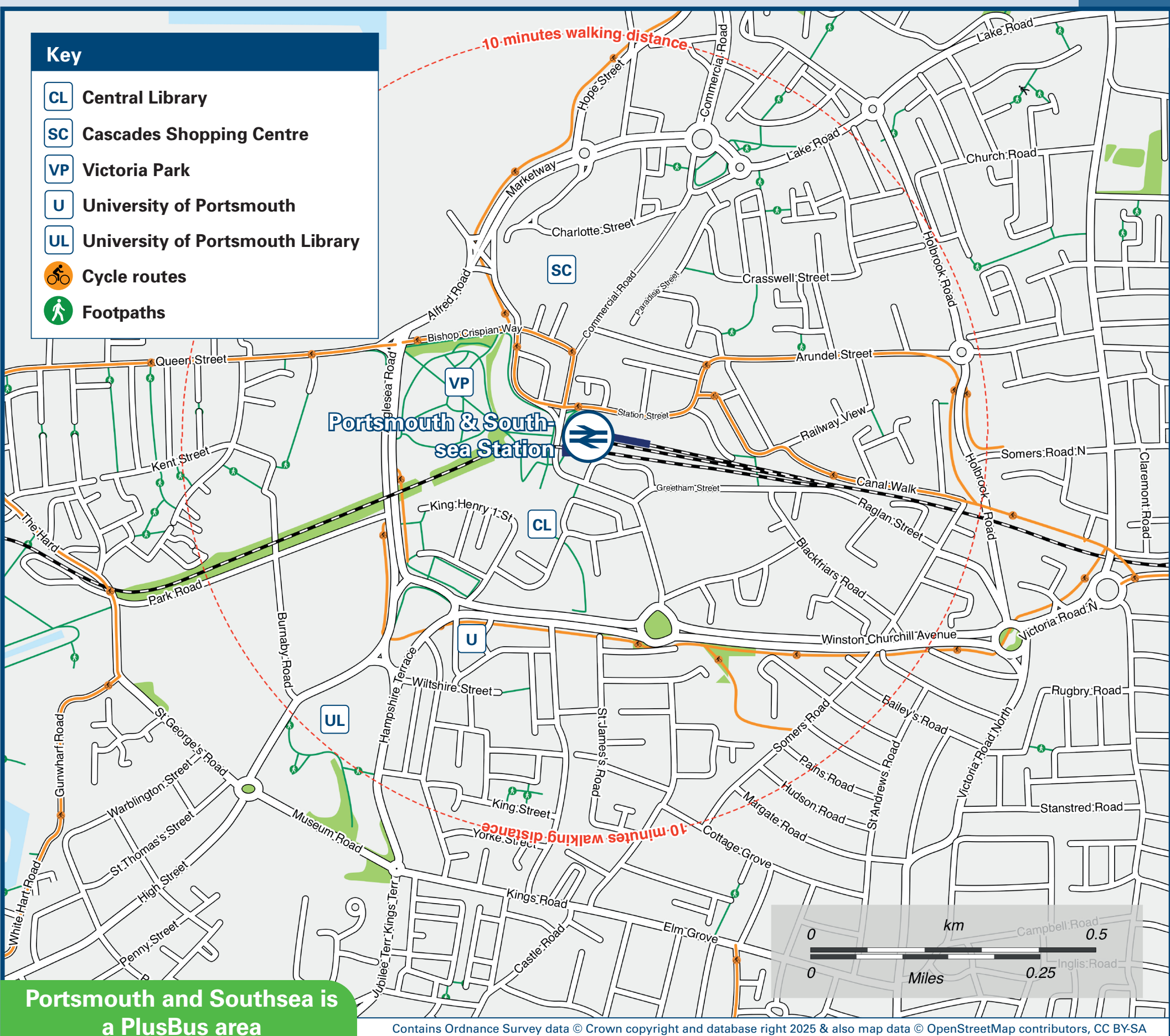
Onward Travel Information

Buses and Taxis



Rail replacement buses depart from Station Street bus stop (J) at side of the Railway Station near Matalan car park.

Local area map



Add **PlusBus** to your train ticket—now available on eTicket from leading rail ticketing apps—for unlimited bus travel in the **PlusBus** zone in your destination town or city. Visit www.plusbus.info

Main destinations by bus



DESTINATION	BUS ROUTES	BUS STOP
Anchorage Park	21	A, H
	19	D
Baffins Pond	14	A, H
Bedhampton	19, 23	D
Buckland (Kingston Road)	3	E
	7, 23	D
Copnor	2	B
	14, 21	A, H
	19	D
	2	B
Cosham	3	E
	7, 8, 20, 23	D
Drayton (Havant Road)	23	D
Eastney (Health Centre)	1, 2	B
Fareham	3, X4, X5	E
Farlington	19, 23	D
Fratton Park (Portsmouth FC)	Direct Train (then 10 minutes walk from Fratton station)	
	1	B
	13	A, H
	2	B
Hilsea (Lido)	3	E
	7, 8, 20, 23, 700	D
Locks Heath	X4, X5	D
Mile End Road (for Charles Dickens Museum)	X4, X5	E
	8, 20, 700	D

DESTINATION	BUS ROUTES	BUS STOP
Milton	13	A, H
	1, 2	B
North End (London Road)	3	E
	7, 23, 700	D
Old Portsmouth (for Cathedral)	23, 700	C
	3	G
Parks Gate	X4	D
Paulsgrove	2	B
	3	E
Portchester	3, X4, X5	E
Portsmouth College	13, 14	A, H
	21	J, G
Portsmouth Harbour*	1, 2, 3, 8, 20, 21	G
	23, 700	C
Portsmouth University	700	C
	Direct Train to Cosham (then 15 minutes walk)	
Queen Alexandra Hospital (Cosham)	2	B
	7, 8, 20	D
	3	E
Southsea Clarence Pier	H1 (to Hover-travel Terminal) ~ 23 (Then a 5 minutes walk)	C
Southsea Duisburg Way	23	C
Southsea Common & Clarence Esplanade	23 (Then a 5 minutes walk)	C

DESTINATION	BUS ROUTES	BUS STOP
Southsea (Palmerston Road Shops)	3	G
	23	C
Southsea (South Parade Pier & Seafront)	1	B
	23	C
	3	G
Stamshaw (For International Port)	8, 20, 700	D
	X4, X5	E
St Mary's Hospital	2	B
Titchfield Common	X4, X5	D
Warsash	X5	D

Notes

- PlusBus** destination, please see below for details. Bus route 19 runs a Mondays to Saturdays service, only. No Sunday service. All other bus routes run daily services, Mondays to Sundays. For bus times and days of operation please contact Traveline on www.traveline.info or call: 0871 200 22 33
- Direct trains operate to this destination from this Station.
- * Portsmouth Harbour for ferries to Gosport & Isle of Wight, the Historic Dockyard and Gunwharf Quays.
- ~ Hovertravel ferry to Ryde Isle of Wight.

Taxis

Portsmouth & Southsea is a major station where taxis are usually available on a rank. Advance booking is not normally necessary, unless arriving early in the morning or late at night. Operators who may accept bookings include: (Inclusion of this number doesn't represent any endorsement of the taxi firm)

Veezu
023 9265 4321

Driving Miss Daisy
0333 014 6211

Further information about all onward travel

Local Cycle Info	National Cycle Info	Bus Times	PlusBus
portsmouth.gov.uk For more information about cycle routes.	walkwheelcycletrust.org.uk	See timetable displays at bus stops. www.traveline.info 0871 200 22 33 calls cost 15p per minute plus your phone company's access charge	plusbus.info PlusBus is a discount price 'bus pass' that you buy with your train ticket. It gives you unlimited bus travel around your chosen town, on participating buses. Visit www.plusbus.info

National Rail Enquiries

Online	NRE App	Social Media	Alert Me	Contact Centre	PlusBike
nationalrail.co.uk	Free National Rail Enquiries app for iOS and Android	facebook.com/nationalrailenq @nationalrailenq	You can sign up to Alert Me messages on the National Rail Enquiries website where you can receive train and platform notifications directly to your smart phone. nationalrail.co.uk/alertme	03457 48 49 50 Calls cost no more than calls to geographic numbers (01 or 02) and may be recorded.	nationalrail.co.uk/plusbike For more information.

South Western Railway



National Rail
Britain's train companies working together

