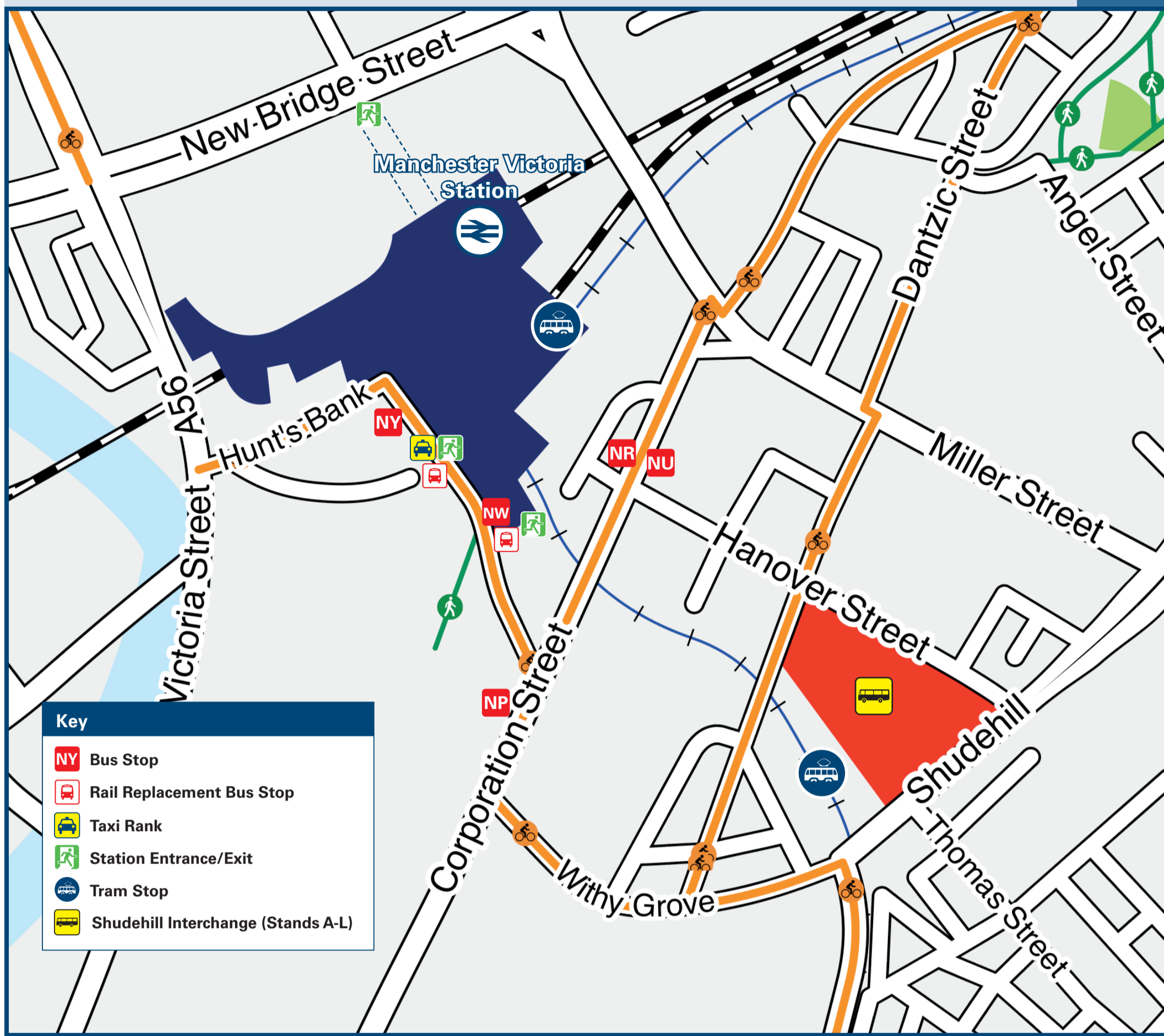




# Manchester Victoria Station

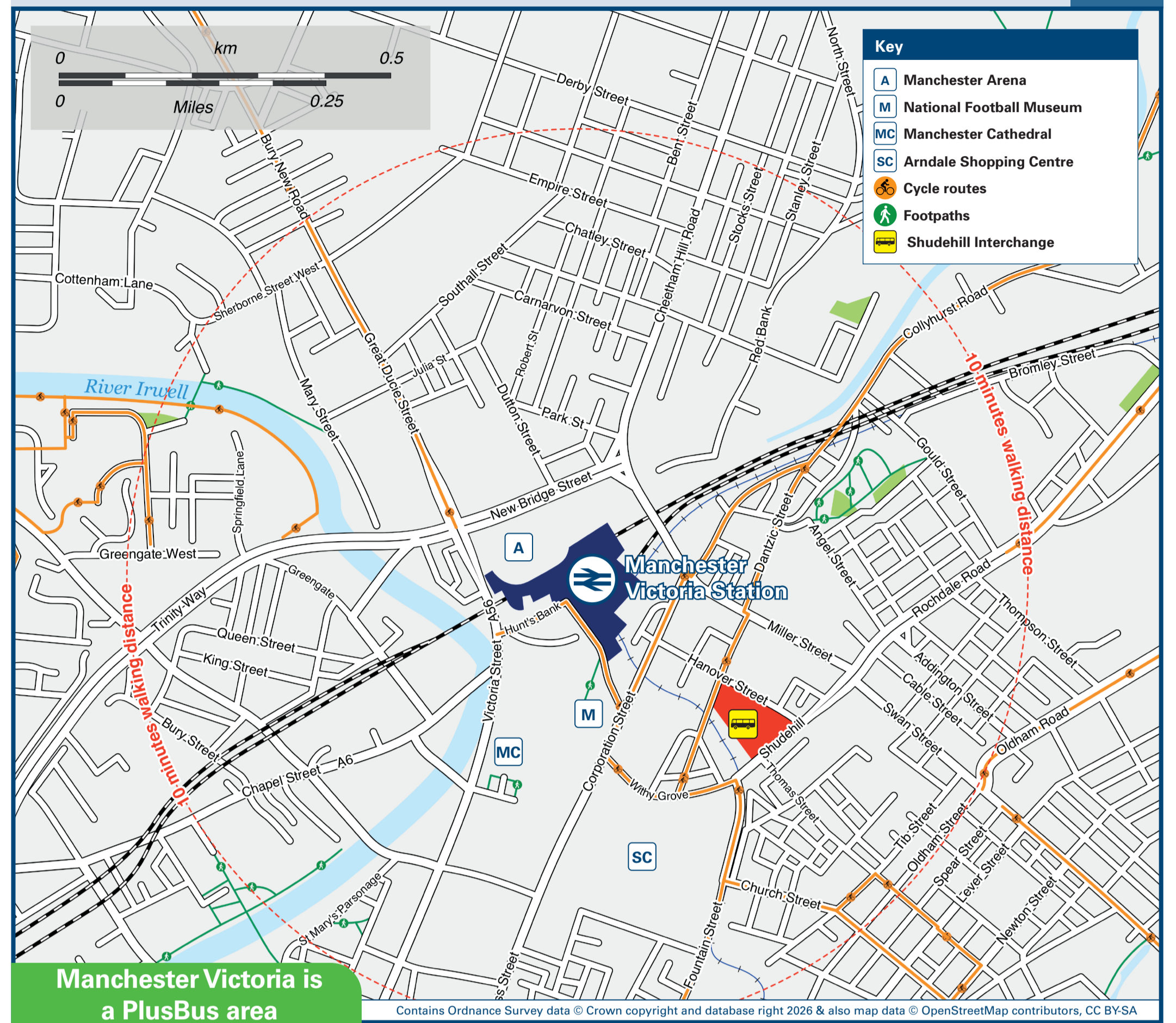
## Onward Travel Information

### Buses, Trams and Taxis



Rail replacement buses Pick up point is on Station Approach (M3 1WY) directly outside the main station entrance, outside the M&S shop.

### Local area map



Manchester Victoria is a PlusBus area



Add PlusBus to your train ticket—now available on eTicket from leading rail ticketing apps—for unlimited bus travel in the PlusBus zone in your destination town or city. Visit [www.plusbus.info](http://www.plusbus.info)

### Main destinations by bus and tram (Data correct at February 2026)

DESTINATION	BUS/TRAM ROUTES	BUS/TRAM STOP
Altrincham	Tram	Victoria Tram Stop
Broughton	97, 98, 99 X41, X43	N Y N P
Bury	Tram 97, 98 135	Victoria Tram Stop N Y N P
Cadishead	67, 100	N Y
Charlestown	10, 93	N Y
Cheetham Hill	Tram 41, 135 59	Victoria Tram Stop N P N Y
Chorlton	Tram	Victoria Tram Stop
Crumpsall	Tram 41 59	Victoria Tram Stop N P N Y
Droylsden	Tram#	Victoria Tram Stop
East Didsbury	Tram	Victoria Tram Stop
Eccles	Tram## 10, 67, 100	Victoria Tram Stop N Y
Ethihad Campus	Tram#	Victoria Tram Stop
Failssworth	Tram	Victoria Tram Stop
Harpurhey	17, 18	Shudehill Interchange
Hollinwood	Tram	Victoria Tram Stop
Imperial War Museum (IWM North)	Tram##	Victoria Tram Stop
Kersal Vale	93	N Y
Langley	18	Shudehill Interchange
Manchester Airport	Tram	Victoria Tram Stop
Manchester City FC (Etihad Stadium)	Tram 41, 135 Free Bus 2, 59	Victoria Tram Stop N U N W
Manchester Piccadilly Gardens*	18, 33	Shudehill Interchange

DESTINATION	BUS/TRAM ROUTES	BUS/TRAM STOP
Manchester Piccadilly Station	Tram Free Bus 2	Victoria Tram Stop N W
Manchester Royal Infirmary	41 18	N U Shudehill Interchange
Manchester (Shudehill Interchange) **	Tram Free Bus 2, 8, 10, 67, 93, 97, 98, 99, 100	Victoria Tram Stop N W
Manchester United FC (Old Trafford)	Tram	Victoria Tram Stop
MediaCityUK (Salford Quays)	Tram## 41	Victoria Tram Stop N P
Middleton	59	N Y
Milnrow	17, 18, 156	Shudehill Interchange
Newhey	Tram	Victoria Tram Stop
Newton Heath and Moston tram stop	Tram	Victoria Tram Stop
North Manchester General Hospital	41 56, 156	N P Shudehill Interchange
Oldham	Tram 59	Victoria Tram Stop N Y
Old Trafford (for Cricket and Football Grounds)	Tram	Victoria Tram Stop
Pendleton	8, 10, 67, 100	N Y
Prestwich	Tram 97, 98, 99 X41, X43	Victoria Tram Stop N Y N P
Radcliffe	Tram 98	Victoria Tram Stop N Y
Rochdale	Tram 17	Victoria Tram Stop Shudehill Interchange
Sale	Tram 41	Victoria Tram Stop N U
Salford Quays	Tram##	Victoria Tram Stop
Salford Royal Hospital	10, 67, 100	N Y

DESTINATION	BUS/TRAM ROUTES	BUS/TRAM STOP
Salford Shopping Centre	8, 10, 67, 100	N Y
Stretford	Tram	Victoria Tram Stop
The Trafford Centre	Tram## 100	Victoria Tram Stop N Y
University of Manchester	41	N U
University of Salford	18	Shudehill Interchange
West Didsbury	8, 67, 100 41	N Y N U
Whitefield	Tram 98 135	Victoria Tram Stop N Y N P

**Notes**

- PlusBus destination, please see below for details.
- PlusBus tickets are valid on all buses in Greater Manchester. Please note PlusBus tickets are not valid for travel on the Metrolink Tram.
- For bus times and days of operation please contact Traveline on [www.traveline.info](http://www.traveline.info) or call: 0871 200 22 33
- Direct trains operate to this destination from this station.
- Direct trains operate to this destination from Manchester Piccadilly station.
- # To this destination please change trams at Piccadilly Gardens tram stop.
- ## To this destination please change trams at Cornbrook tram stop.
- \* Extensive bus and tram connections are available at Piccadilly Gardens Interchange (take the tram, bus or it's a 15 minutes walk from this station).
- \*\* Extensive bus connections are available at Shudehill Interchange (take the tram or it's a 5 minutes walk from this station - please see maps).

**Taxis** Manchester Victoria station is a major station where taxis are usually available on a rank. Advance booking is not normally necessary, unless arriving early in the morning or late at night. Operators who may accept bookings include: (Inclusion of this number doesn't represent any endorsement of the taxi firm)

**Manchester Taxi Service** 0161 270 8701  
**Street Cars** 0161 228 7878  
**Intime Taxis** 0161 256 1222

**Further information about all onward travel**

<b>Local Cycle Info</b> <a href="http://manchester.gov.uk">manchester.gov.uk</a> <small>For more information about cycle routes.</small>	<b>National Cycle Info</b> <a href="http://walkwheelcycletrust.org.uk">walkwheelcycletrust.org.uk</a>	<b>Bus Times</b> See timetable displays at bus stops. <a href="http://www.traveline.info">www.traveline.info</a> 0871 200 22 33 <small>calls cost 15p per minute plus your phone company's access charge</small>	<b>PlusBus</b> <a href="http://plusbus.info">plusbus.info</a> PlusBus is a discount price 'bus pass' that you buy with your train ticket. It gives you unlimited bus travel around your chosen town, on participating buses. Visit <a href="http://www.plusbus.info">www.plusbus.info</a>
--	--	--	---

**National Rail Enquiries**

<b>Online</b> <a href="http://nationalrail.co.uk">nationalrail.co.uk</a>	<b>NRE App</b> Free National Rail Enquiries app for iOS and Android	<b>Social Media</b> facebook.com/nationalrailenq @nationalrailenq	<b>Alert Me</b> You can sign up to Alert Me messages on the National Rail Enquiries website where you can receive train and platform notifications directly to your smart phone. <a href="http://nationalrail.co.uk/alertme">nationalrail.co.uk/alertme</a>	<b>Contact Centre</b> 03457 48 49 50 Calls cost no more than calls to geographic numbers (01 or 02) and may be recorded.	<b>PlusBike</b> <a href="http://nationalrail.co.uk/plusbike">nationalrail.co.uk/plusbike</a> For more information.
---	--	---	---	--	--



This poster shows details of popular destinations and main, frequent bus routes. Additional services may run, so please check with Traveline or see posters at local bus stops. Whilst considerable care has been taken to ensure the information contained on this poster is correct and accurate, National Rail cannot accept responsibility for any loss or inconvenience caused by any errors or omissions, or for loss, damage, injury or inconvenience relating to the cancellation, alteration, delay or diversion of a service. For any feedback, please e-mail [comments@onwardtravelposters.com](mailto:comments@onwardtravelposters.com)

Scan this code with your mobile for full station information.