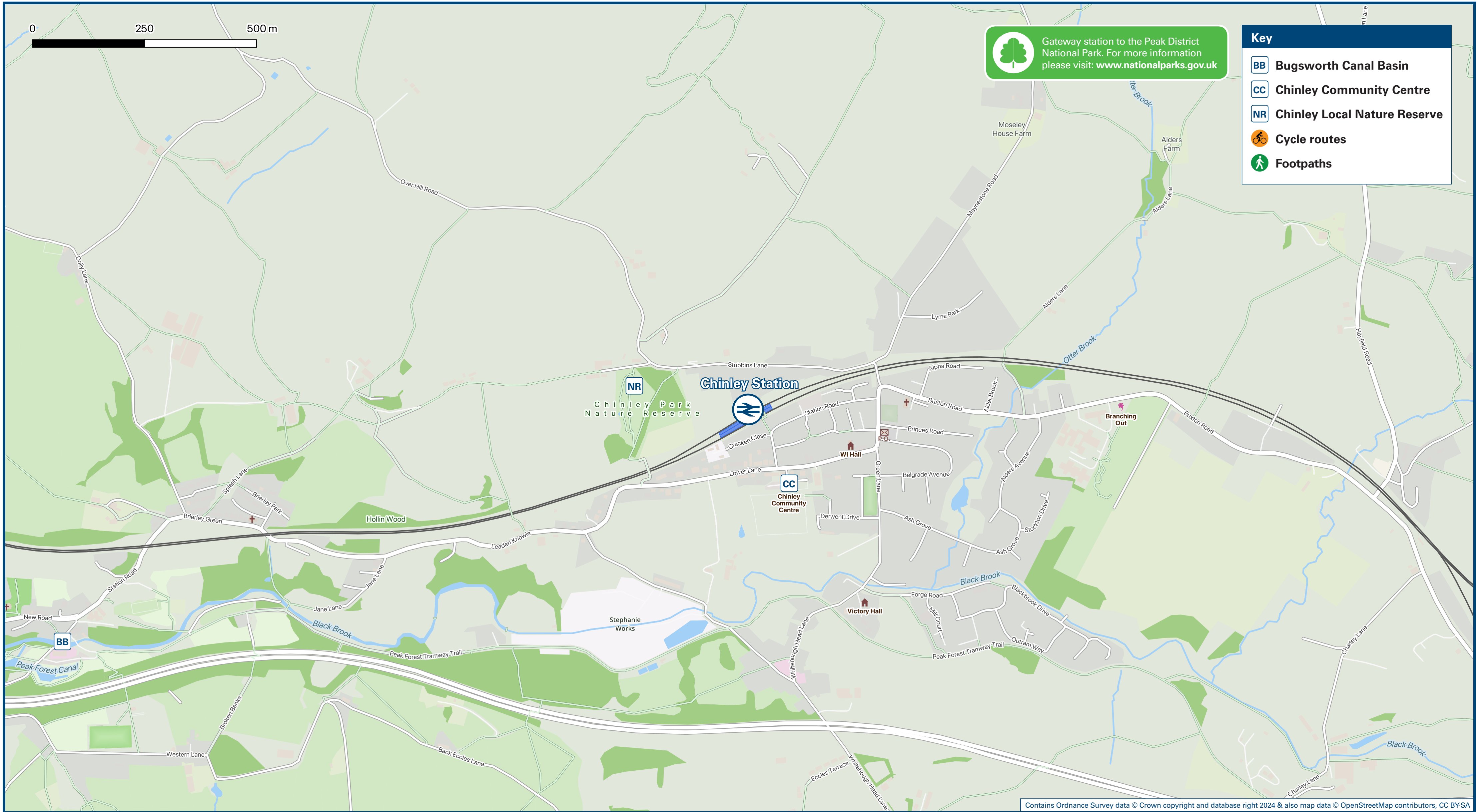




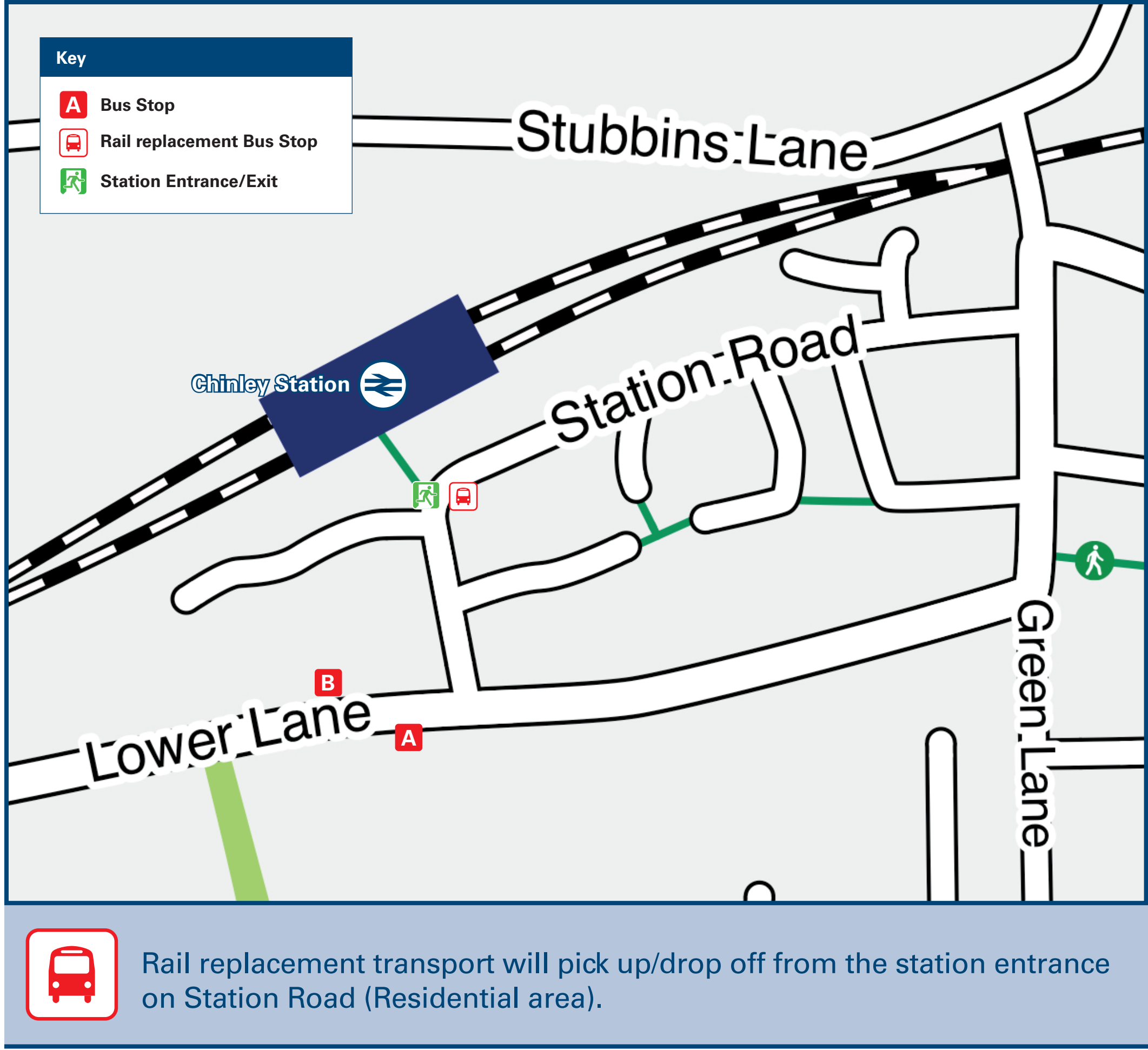
Chinley Station

Onward Travel Information

Local area map



Buses



Main destinations by bus

(Data correct at November 2024)

DESTINATION	BUS ROUTES	BUS STOP
Buxton	190	B
Buxworth	190	A
Chapel-en-le-Frith	190	B
Horwich End	190	B
Peak Dale	190	B
Peak Forest	190	B
Shallcross Estate (Whaley Bridge)	190	A
Sparrowpit	190	B
Upper End	190	B
Waterswallows	190	B
Whaley Bridge Station	190	A

Notes

Bus route 190 operates Mondays to Saturdays. No Sunday or Bank Holiday service. For bus times please see bus stop timetables or contact Traveline on 0871 200 22 33.

Change here for trains to Buxton, Dove Holes, Hazel Grove, Stockport and Manchester. National Park Peak District National Park www.peakdistrict.gov.uk

Taxis

Chinley station has no taxi rank or cab office. Advance booking is essential, please consider using the following local operators: (Inclusion of this number doesn't represent any endorsement of the taxi firm)

Buxton Radio Taxis
01298 234 57

Al's Private Hire
01298 815 345

TM Private Hire
01298 812 148

Further information about all onward travel

Local Cycle Info www.derbyshire.gov.uk For more information about cycle routes.	National Cycle Info sustrans.org.uk Sustrans is the UK's leading sustainable transport charity.	Bus Times See timetable displays at bus stops. www.traveline.info 0871 200 22 33 calls cost 15p per minute plus your phone company's access charge	NextBuses Find the bus times for your stop. Search for a bus stop by entering a postcode, street & town or a stop name & town.	PlusBus plusbus.info A discount price 'bus pass' that you buy with your train ticket. It gives you unlimited bus travel around your chosen town, on participating buses.
---	---	---	--	--

National Rail Enquiries

Online nationalrail.co.uk	NRE App Free National Rail Enquiries app for iOS and Android	Social Media facebook.com/nationalrailenq @nationalrailenq	Alert Me You can sign up to Alert Me messages on the National Rail Enquiries website where you can receive train and platform notifications directly to your smart phone. nationalrail.co.uk/alertme	Contact Centre 03457 48 49 50 Calls cost no more than calls to geographic numbers (01 or 02) and may be recorded.	PlusBike nationalrail.co.uk/plusbike For more information.
---	--	--	---	--	--



This poster shows details of popular destinations and main, frequent bus routes. Additional services may run, so please check with Traveline or see posters at local bus stops. Whilst considerable care has been taken to ensure the information contained on this poster is correct and accurate, National Rail cannot accept responsibility for any loss or inconvenience caused by any errors or omissions, or for loss, damage, injury or inconvenience relating to the cancellation, alteration, delay or diversion of a service. For any feedback, please e-mail comments@onwardtravelposters.com

Scan this code with your mobile for full station information.