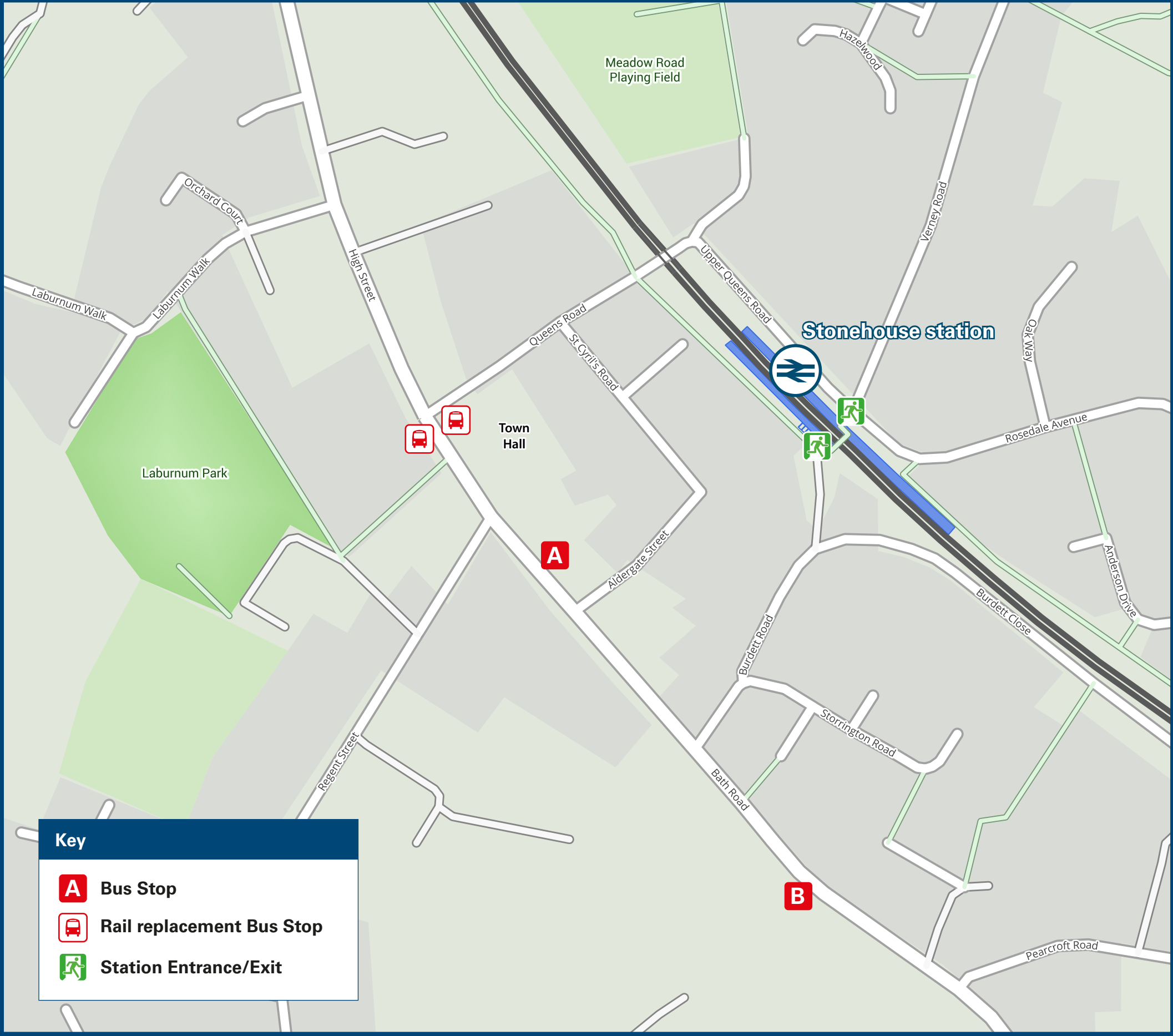




Stonehouse Station

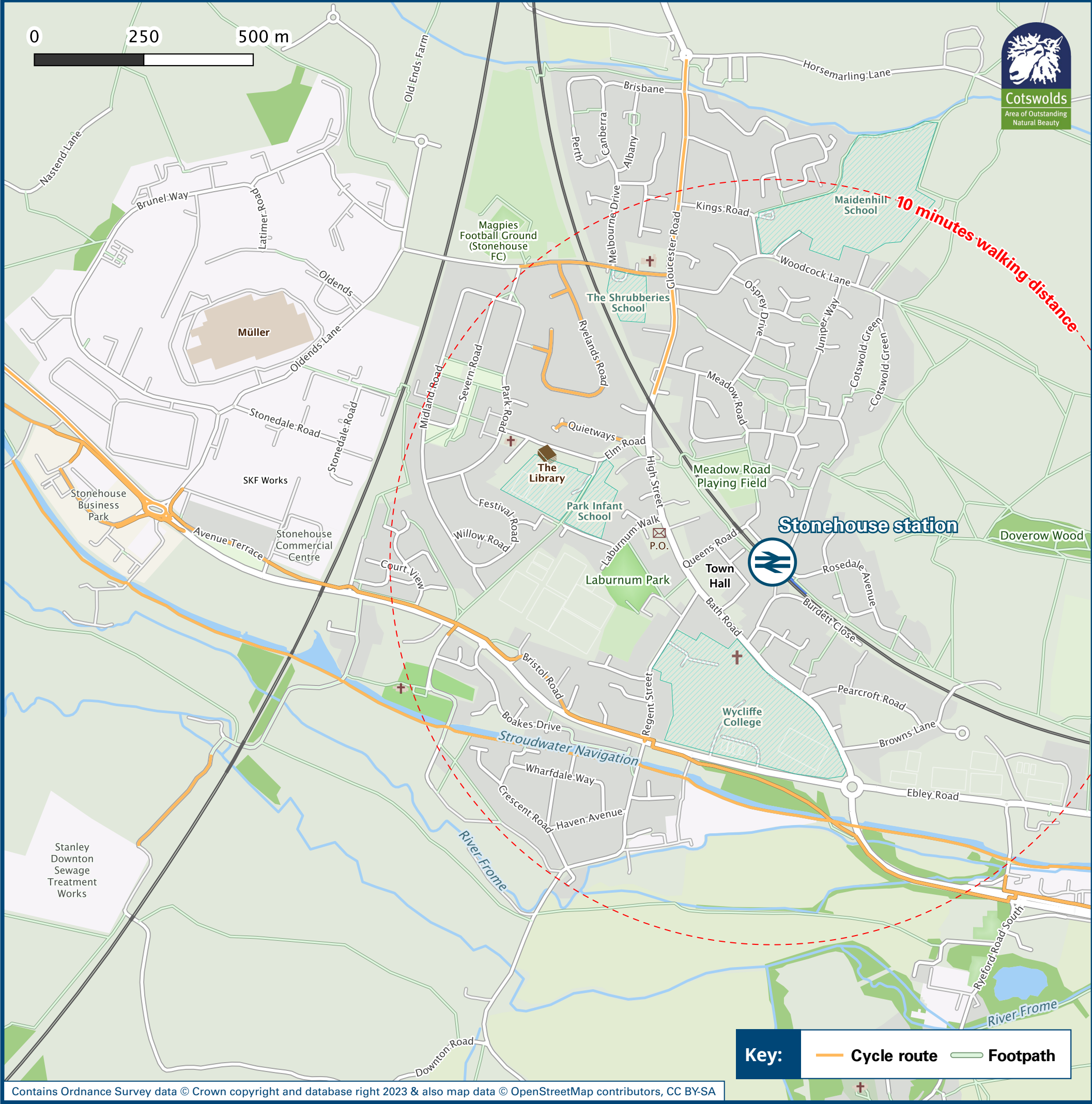
Onward Travel Information

Buses



Rail replacement outside the Post Office on the main road. Taxis from the main entrance.

Local area map



Main destinations by bus

(Data correct at January 2025)



DESTINATION	BUS ROUTES	BUS STOP
Bridgend	62	A
Cainscross	62, 64, 65**	A
Cambridge (Gloucs)	65	A
Claypits	65	A
Draycott	65	A
Dudbridge (Sainsbury's)	62, 65**	A
Dursley	65	A
Eastington	65	A
Ebley	64	A

DESTINATION	BUS ROUTES	BUS STOP
Frampton on Severn	65	A
Gloucester	62, 64, 65	B
King's Stanley	62	A
Leonard Stanley	62	A
Lower Cam	65	A
Middleyard	62	A
Quedgeley	64, 65	B
Ryeford	64	A
Selsley	62, 65**	A

DESTINATION	BUS ROUTES	BUS STOP
Stroud	62, 64, 65	A
Uley	65	A
Whitminster	64	B
Woodmancote	65	A

Notes

Bus routes 62, 64 and 65 operate daily services. For bus times and the latest bus service information, please contact Traveline www.traveline.info (or call: 0871 200 2233)

Direct trains operate from this station to this destination. AONB Cotswolds (AONB) www.cotswoldsaonb.org.uk

* Limited journeys with this service to this destination, please check timetables.

** Bus route 65 operates Mondays to Saturdays only to this destination.

Taxis

Stonehouse Station has no taxi rank or cab office. Advance booking is essential, please consider using the following local operators: (Inclusion of this number doesn't represent any endorsement of the taxi firm)

Apollo Taxis
01453 823 344

Groves Taxis
01453 826 241 or 07968 247 891

L & E Taxi
07496 092 086

Further information about all onward travel

Local Cycle Info	National Cycle Info	Bus Times	NextBuses	PlusBus
Stroud.gov.uk For more information about cycle routes.	sustrans.org.uk Sustrans is the UK's leading sustainable transport charity.	See timetable displays at bus stops. www.travelinesw.com	Find the bus times for your stop. Search for a bus stop by entering a postcode, street & town or a stop name & town.	plusbus.info A discount price 'bus pass' that you buy with your train ticket. It gives you unlimited bus travel around your chosen town, on participating buses.

National Rail Enquiries

Online	NRE App	Social Media	Alert Me	Contact Centre	PlusBike
nationalrail.co.uk	Free National Rail Enquiries app for iOS and Android	facebook.com/nationalrailenq @nationalrailenq	You can sign up to Alert Me messages on the National Rail Enquiries website where you can receive train and platform notifications directly to your smart phone. nationalrail.co.uk/alertme	03457 48 49 50 Calls cost no more than calls to geographic numbers (01 or 02) and may be recorded.	nationalrail.co.uk/plusbike For more information.



National Rail
Britain's train companies working together



This poster shows details of popular destinations and main, frequent bus routes. Additional services may run, so please check with Traveline or see posters at local bus stops. Whilst considerable care has been taken to ensure the information contained on this poster is correct and accurate, National Rail cannot accept responsibility for any loss or inconvenience caused by any errors or omissions, or for loss, damage, injury or inconvenience relating to the cancellation, alteration, delay or diversion of a service. For any feedback, please e-mail comments@onwardtravelposters.com

Scan this code with your mobile for full station information.