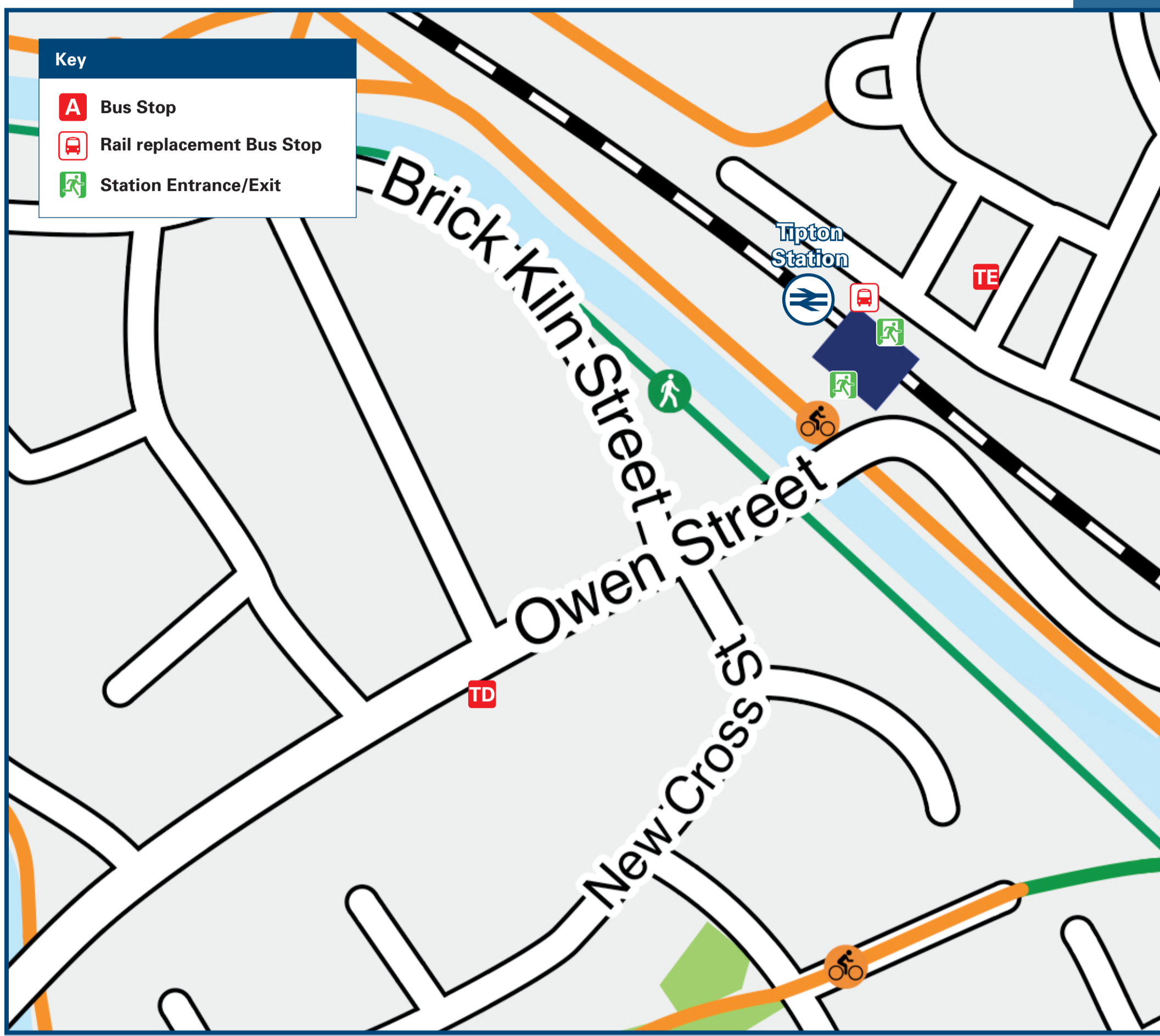




# Tipton Station

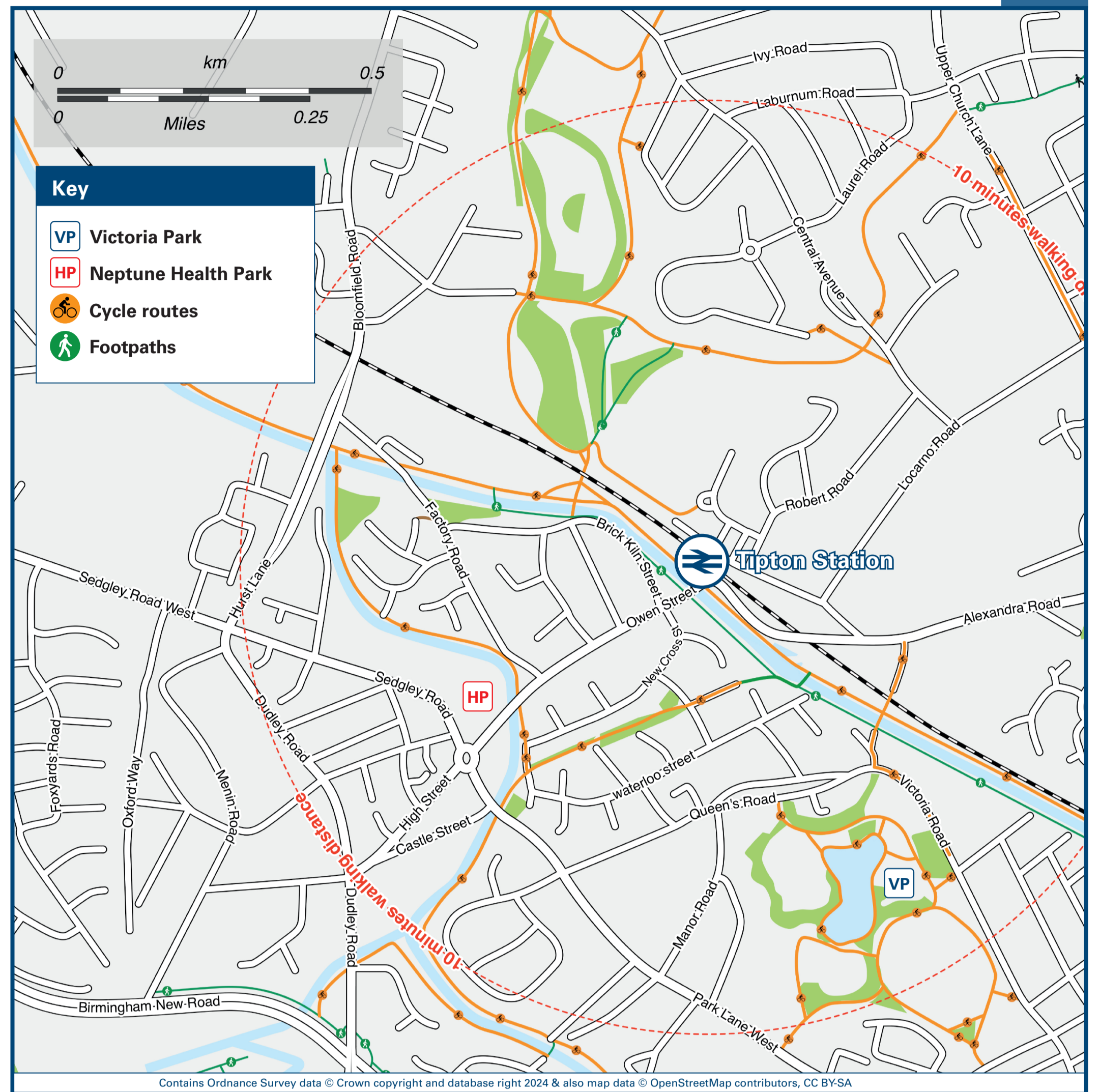
# Onward Travel Information

## Buses



Rail replacement buses/coaches will collect from the lay-by at the front of the station car park.

## Local area map



## Main destinations by bus

(Data correct at July 2024)



DESTINATION	BUS ROUTES	BUS STOP	DESTINATION	BUS ROUTES	BUS STOP	DESTINATION	BUS ROUTES	BUS STOP
Albion	42	TE	Gospel Oak	42	TE	Swan Village	229	TD
Beacon Hill	229	TD	Great Bridge	42	TE	Tipton (Victoria Road, for Victoria Park)	42	TE
Bilston (Bus Station)	229	TD	Greets Green	42	TE	West Bromwich (Bus Station)	42	TE
Black Country Living Museum	229	TD	Hurst Hill	229	TD	Woodsetton	229	TD
Bloomfield	229	TD	Lamberts End	42	TE			
Coseley	229	TD	Ocker Hill	42	TE			
Dudley (Bus Station)	229	TD	Sedgley	229	TD			

**Notes**

Bus route 229 runs Mondays to Fridays and on Sundays, only. No Saturday service.

Bus route 42 runs a daily service, Mondays to Sundays.

Direct trains operate to this destination from this Station.

## Taxis

Tipton Station has no taxi rank or cab office. Advance booking is essential, please consider using the following local operators: (Inclusion of this number doesn't represent any endorsement of the taxi firm)

**121 carz Ltd**  
0121 557 0121

**County Cars**  
0121 522 2233

**Time Travel Cars**  
0121 557 5757

## Further information about all onward travel

<b>Local Cycle Info</b> <a href="http://www.tfwm.org.uk/plan-your-journey/ways-to-travel/cycling-and-walking">www.tfwm.org.uk/plan-your-journey/ways-to-travel/cycling-and-walking</a> <small>For more information about cycle routes.</small>	<b>National Cycle Info</b> <a href="http://sustrans.org.uk">sustrans.org.uk</a> <small>Sustrans is the UK's leading sustainable transport charity.</small>	<b>Bus Times</b> <small>See timetable displays at bus stops.</small> <a href="http://www.traveline.info">www.traveline.info</a> <b>0871 200 22 33</b> <small>calls cost 13p per minute plus your phone company's access charge</small>	<b>NextBuses</b> <small>Download on the App Store</small> <b>Find the bus times for your stop.</b> <small>Search for a bus stop by entering a postcode, street &amp; town or a stop name &amp; town.</small>	<b>PlusBus</b> <b>plusbus.info</b> <small>A discount price 'bus pass' that you buy with your train ticket. It gives you unlimited bus travel around your chosen town, on participating buses.</small>
--	--	--	---	---

## National Rail Enquiries

<b>Online</b> <a href="http://nationalrail.co.uk">nationalrail.co.uk</a>	<b>NRE App</b> <b>Free National Rail Enquiries app for iOS and Android</b>	<b>Social Media</b> <a href="https://www.facebook.com/nationalrailenq">facebook.com/nationalrailenq</a> <a href="https://twitter.com/nationalrailenq">@nationalrailenq</a>	<b>Alert Me</b> <small>You can sign up to Alert Me messages on the National Rail Enquiries website where you can receive train and platform notifications directly to your smart phone.</small> <a href="http://nationalrail.co.uk/alertme">nationalrail.co.uk/alertme</a>	<b>Contact Centre</b> <b>03457 48 49 50</b> <small>Calls cost no more than calls to geographic numbers (01 or 02) and may be recorded.</small>	<b>PlusBike</b> <a href="http://nationalrail.co.uk/plusbike">nationalrail.co.uk/plusbike</a> <small>For more information.</small>
---	---	--	--	--	---



This poster shows details of popular destinations and main, frequent bus routes. Additional services may run, so please check with Traveline or see posters at local bus stops. Whilst considerable care has been taken to ensure the information contained on this poster is correct and accurate, National Rail cannot accept responsibility for any loss or inconvenience caused by any errors or omissions, or for loss, damage, injury or inconvenience relating to the cancellation, alteration, delay or diversion of a service. For any feedback, please e-mail [comments@onwardtravelposters.com](mailto:comments@onwardtravelposters.com)

Scan this code with your mobile for full station information.