



# Salisbury Station

## Onward Travel Information

### Buses and Taxis



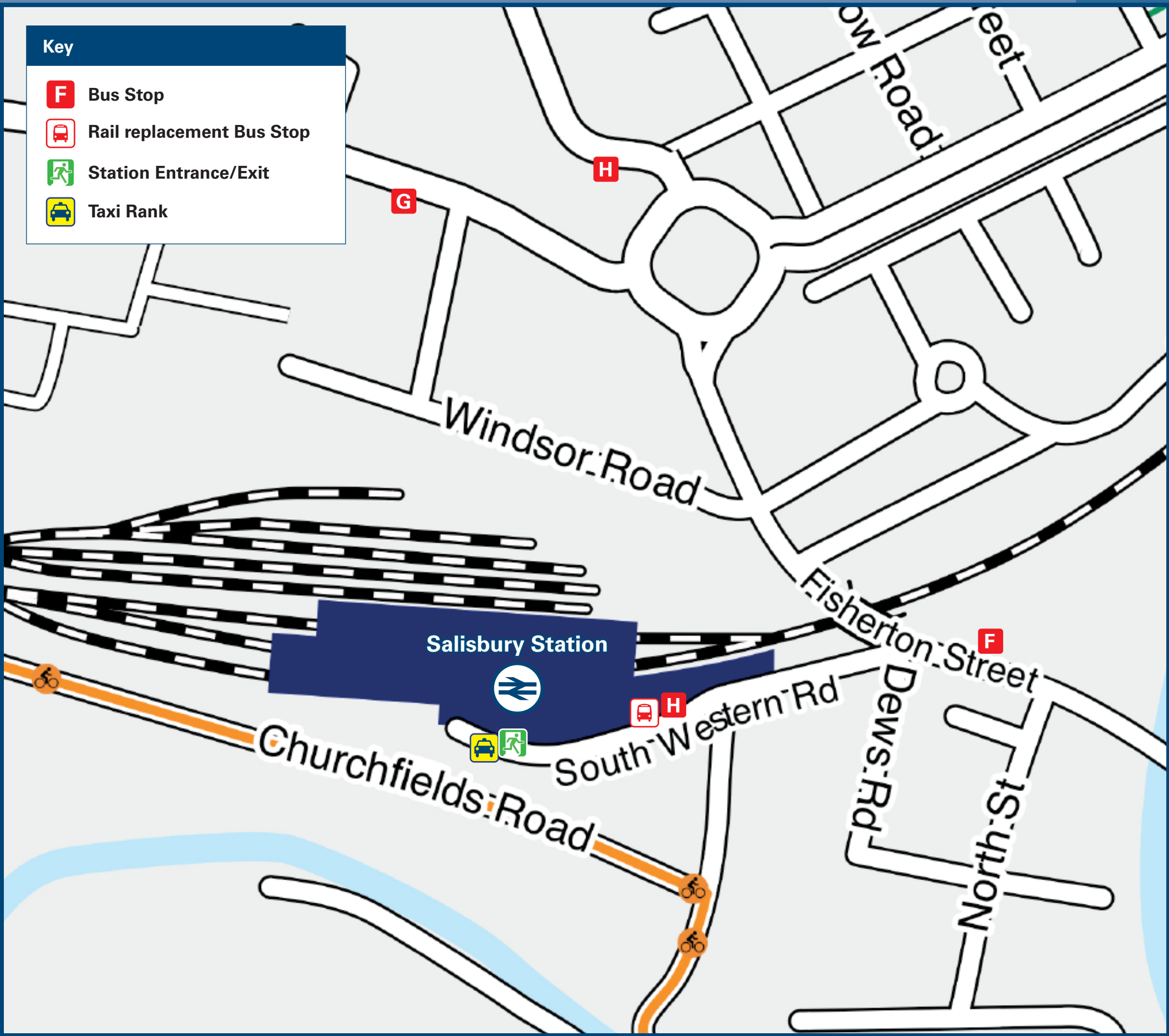
Key

Bus Stop

Rail replacement Bus Stop

Station Entrance/Exit

Taxi Rank



Rail replacement buses/coaches will depart from the station forecourt.

### Local area map



Key

City Centre bus stops

Cathedral

Salisbury Library

The Rifles Museum

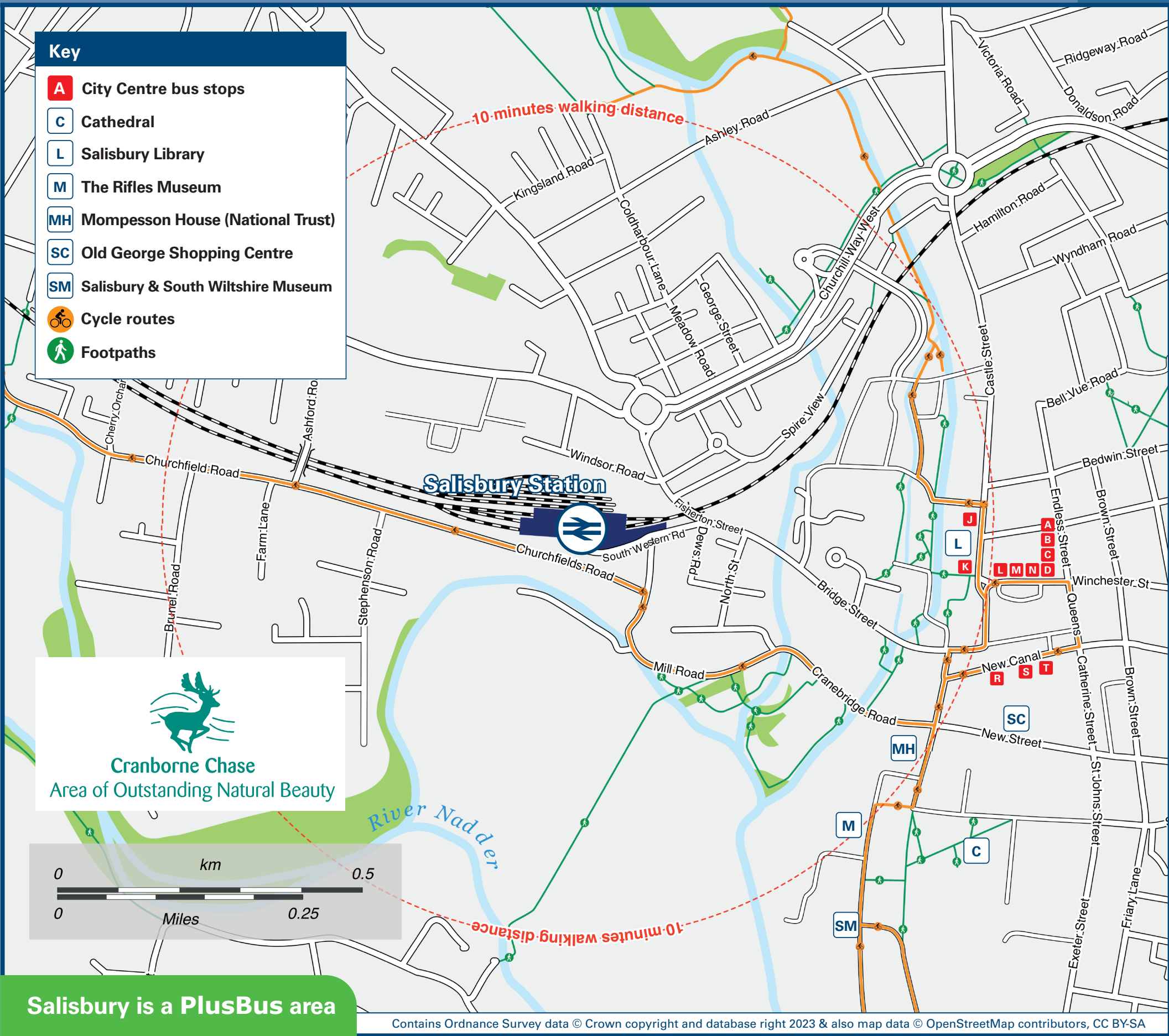
Mompesson House (National Trust)

Old George Shopping Centre

Salisbury & South Wiltshire Museum

Cycle routes

Footpaths



**PlusBus** is a discount price 'bus pass' that you buy with your train ticket. It gives you unlimited bus travel around your chosen town, on participating buses. Visit [www.plusbus.info](http://www.plusbus.info)

### Main destinations by bus

(Data correct at December 2023)



DESTINATION	BUS ROUTES	BUS STOP
Alderbury	37 <sup>A</sup> , X7, X7R	<b>D</b>
Amesbury	8, X4, X5	<b>N</b>
Barford St Martin	25, 26, 26A <sup>^^</sup> , 27 <sup>A</sup>	<b>G</b>
Bemerton Heath	R1	<b>H</b>
Berwick St James	2	<b>G</b>
Bishopdown	PR7, R7+	<b>L</b>
Bishopstone	R2	<b>A</b>
Blandford Forum	29	<b>M</b>
Bournemouth	20 <sup>A</sup>	<b>D</b>
Britford	X3	<b>M</b>
Broad Chalke	29	<b>M</b>
Bulbridge	PR3, R3+	<b>G</b>
Bulford	8, X4	<b>N</b>
Bulford Camp	8	<b>N</b>
Chilmark	25	<b>G</b>
City Centre	All buses from bus stop	<b>F</b>
Codford	24	<b>G</b>
Coombe Bissett	20 <sup>A</sup>	<b>D</b>
Devizes	29	<b>M</b>
Devizes Road	2	<b>G</b>
Dinton	R1	<b>H</b>
	R10#	<b>G, H</b>
	25	<b>G</b>
Ditchampton	25, 26, 26A <sup>^^</sup> , 27 <sup>A</sup> , PR3, R3+, R8	<b>G</b>
Downton	44, X3	<b>M</b>
Durrington	X4, X5	<b>N</b>
East Grimstead	37 <sup>A</sup>	<b>D</b>
Farley	37 <sup>A</sup>	<b>D</b>
Firsdon	87, 88 <sup>A</sup>	<b>D</b>
Fordingbridge	X3	<b>M</b>
Fovant	25, 26, 26A <sup>^^</sup> , 27 <sup>A</sup>	<b>G</b>
Fugglestone Red	R10#	<b>G, H</b>
Great Wishford	2	<b>G</b>

DESTINATION	BUS ROUTES	BUS STOP
Hampton Park	PR7, R7+	<b>L</b>
Heytesbury	R2*	<b>M</b>
Hindon	24	<b>G</b>
Idmiston	25	<b>G</b>
Larkhill	66	<b>C</b>
Laverstock	X4	<b>N</b>
	R6, 88 <sup>A</sup>	<b>C</b>
	66	<b>C</b>
	R2*	<b>M</b>
Lower Bemerton	2, 24, 25, 26, 26A <sup>^^</sup> , 27 <sup>A</sup> , PR3, R3+, R8	<b>G</b>
Ludgershall	8	<b>N</b>
Market Lavington	2	<b>G</b>
Marlborough	X5	<b>N</b>
Netheravon	X4*, X5	<b>N</b>
Old Sarum	8, X4, X5	<b>N</b>
Pauls Dene	PR11, R11+	<b>J</b>
Pewsey	R4	<b>K</b>
Porton	X4*, X5	<b>N</b>
	66	<b>C</b>
Porton Down**	67, X67	<b>C</b>
	66	<b>C</b>
Potterne	67, X67	<b>C</b>
	2	<b>R</b>
Quidhampton	2, 24, 25, 26, 26A <sup>^^</sup> , 27 <sup>A</sup> , PR3, R3+, R8	<b>G</b>
Ringwood	X3	<b>M</b>
Salisbury District Hospital	R1	<b>F</b>
Shaftesbury	27 <sup>A</sup>	<b>G</b>
Shrewton	29	<b>M</b>
South Newton	2	<b>G</b>
Stapleford	2, 24	<b>G</b>
Steeple Langford	24	<b>G</b>
Stoford	2, 24	<b>G</b>
Stonehenge Visitors Centre	ST(Stonehenge Tour)	<b>H</b>
Swallowcliffe	26, 27 <sup>A</sup>	<b>G</b>

DESTINATION	BUS ROUTES	BUS STOP
Tidworth	8	<b>N</b>
Tilshead	2	<b>G</b>
West Hamham	R5	<b>B</b>
West Wellow	R5**, R14	<b>M</b>
Whaddon	X7	<b>D</b>
Whiteparish	37 <sup>A</sup>	<b>D</b>
	X7, X7R	<b>D</b>
	X7, X7R	<b>D</b>
Wilton (for Wilton House)	25, 26, 26A <sup>^^</sup> , 27 <sup>A</sup> , PR3, R3+, R8	<b>G</b>
Winterbourne Gunner	66	<b>C</b>
Winterbourne Earls	66	<b>C</b>
Winterbourne Stoke	2	<b>R</b>
Winterslow	87, 88 <sup>A</sup>	<b>C</b>
Woodfalls	44	<b>M</b>

#### Notes

● **PlusBus** destination, please see below for details.

From Sunday 6th August 2023 for up to one year, Fisherton Street will be restricted to one-way traffic towards the City Centre only.

Bus routes 2, 24, 25, 26, 26A, 29, 44, 66, 87, PR3, PR7, PR11, R8, R14, X5, X7, X7R, X67 run Mondays to Saturdays only

Bus routes 8, R1, R2, R4, R5, R6, R10, X3, X4 and ST(Stonehenge Tour) run daily.

# Monday to Saturday early mornings and all day on Sundays buses run from stop (H), all other times from stop (G), check the timetable.

\* Monday to Sunday evenings only to this destination.

<sup>A</sup> Bus routes 20, 27, 37 and 88 run a limited service Mondays to Fridays only.

<sup>^^</sup> Bus route 26A runs a limited service Saturdays only.

+ Bus routes R3, R7 and R11 run Sundays and Public Holidays only.

\*\* Monday to Sunday evenings only from stop (M), daytime and evening buses from stop (B).

AONB Cranborne Chase & West Wiltshire Downs (AONB) [www.cccwdaonb.org.uk](http://www.cccwdaonb.org.uk)

### Taxis

Salisbury is a major station where taxis are usually available on a rank. Advance booking is not normally necessary, unless arriving early in the morning or late at night. Operators who may accept bookings include: (Inclusion of this number doesn't represent any endorsement of the taxi firm)

**All the Sevens Taxis**  
01722 777 777

**AA Taxi**  
01722 505 011

**Moonraker Travel**  
01722 444 328

**Value Cars**  
01722 505 050

### Further information about all onward travel

Local Cycle Info	National Cycle Info	Bus Times	NextBuses	PlusBus
<a href="http://wiltshire.gov.uk">wiltshire.gov.uk</a> For more information about cycle routes.	<a href="http://sustrans.org.uk">sustrans.org.uk</a> Sustrans is the UK's leading sustainable transport charity.	See timetable displays at bus stops. <a href="http://www.traveline.info">www.traveline.info</a> 0871 200 22 33 calls cost 12p per minute plus your phone company's access charge	Find the bus times for your stop. Search for a bus stop by entering a postcode, street & town or a stop name & town.	<a href="http://plusbus.info">plusbus.info</a> A discount price 'bus pass' that you buy with your train ticket. It gives you unlimited bus travel around your chosen town, on participating buses.

### National Rail Enquiries

Online	NRE App	Social Media	Alert Me	Contact Centre	PlusBike
<a href="http://nationalrail.co.uk">nationalrail.co.uk</a>	Free National Rail Enquiries app for iOS and Android	<a href="https://www.facebook.com/nationalrailenq">facebook.com/nationalrailenq</a> <a href="https://twitter.com/nationalrailenq">@nationalrailenq</a>	You can sign up to Alert Me messages on the National Rail Enquiries website where you can receive train and platform notifications directly to your smart phone. <a href="http://nationalrail.co.uk/alertme">nationalrail.co.uk/alertme</a>	03457 48 49 50 Calls cost no more than calls to geographic numbers (01 or 02) and may be recorded.	<a href="http://nationalrail.co.uk/plusbike">nationalrail.co.uk/plusbike</a> For more information.



**National Rail**  
Britain's train companies working together

