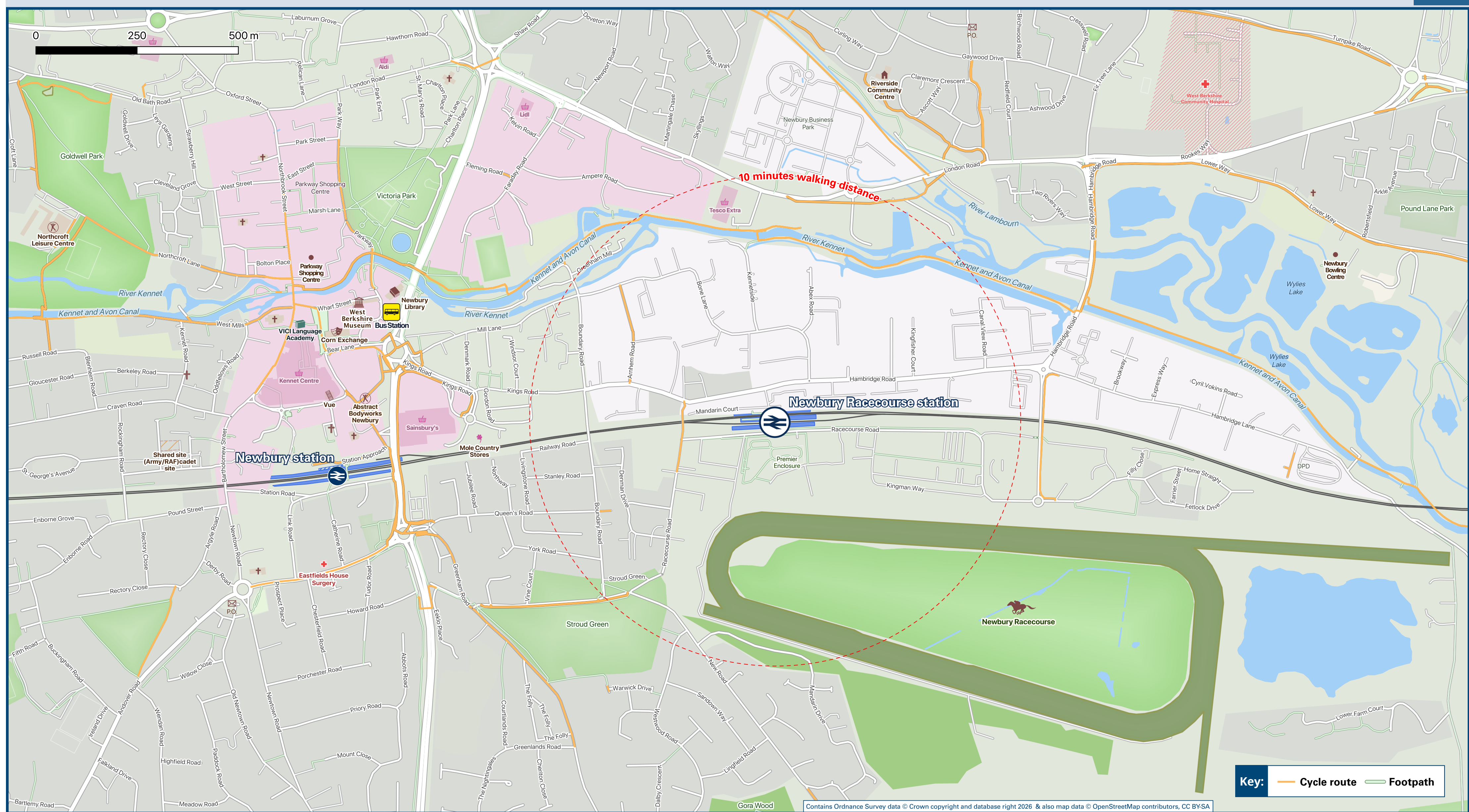




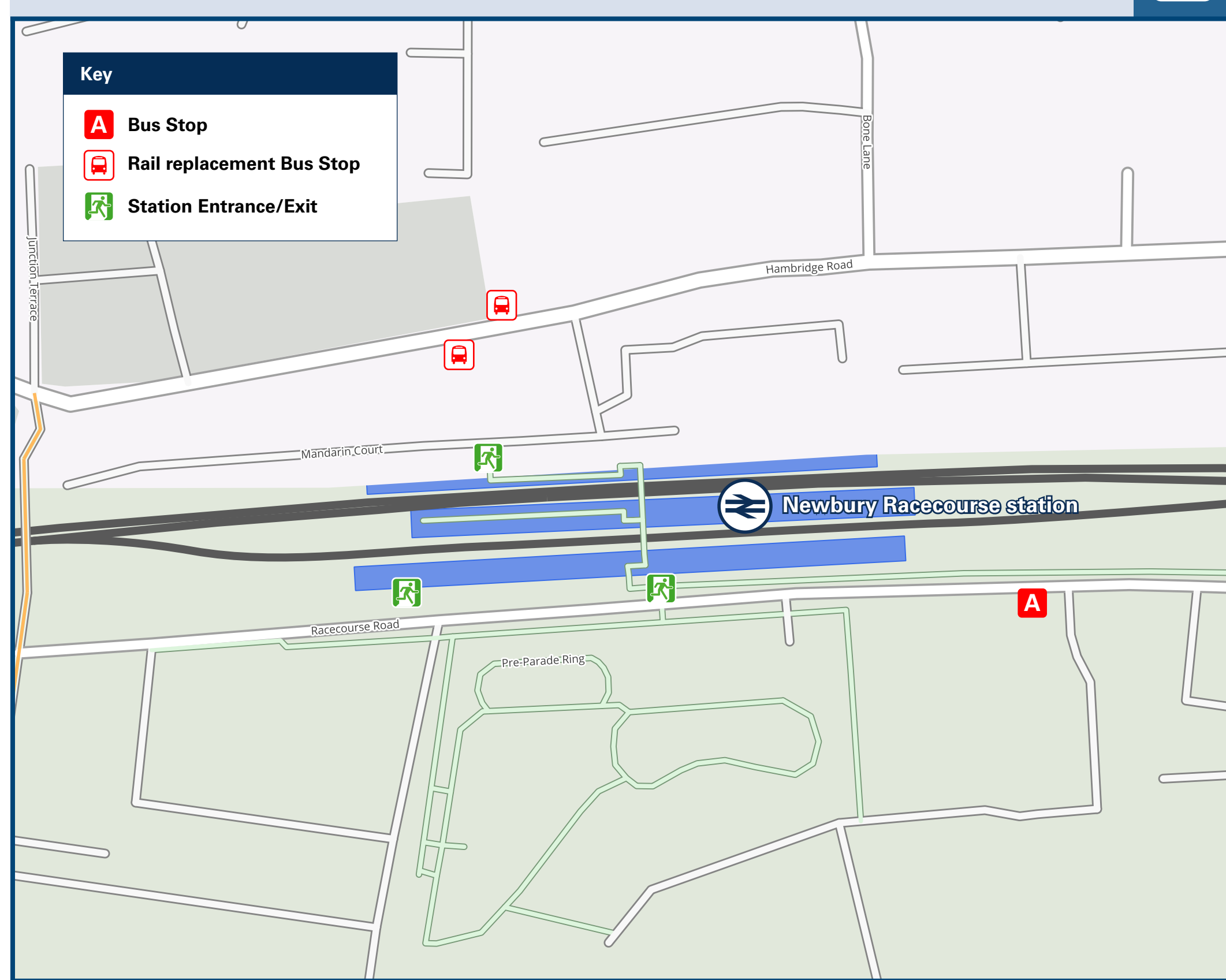
# Newbury Racecourse Station

# Onward Travel Information

## Local area map



## Buses



Rail replacement buses/coaches depart from the bus stops on B3421, Hambridge Road.

## Main destinations by bus

(Data correct at January 2026)

DESTINATION	BUS ROUTES	BUS STOP
Greenham Road (Chapel Corner)	9	A
20 minutes walk from this station (see local area map)		
Newbury Wharf / Town Centre (for Shops & Vue Cinema)	9	A
Racecourse Estate (Rondetto Avenue)	9	A

### Notes

Bus route 9 operates a Mondays to Saturdays service, only. No Sunday service.  
For bus times and days of operation please contact TraveLine on [www.traveline.info](http://www.traveline.info) or call: 0871 200 22 33  
Taxi Info Newbury Racecourse station has no taxi rank or cab office. Advance booking is essential, please consider using the following local operators:

## Taxis

Newbury Racecourse Station is served by a taxi rank or cab office. Check availability before travelling, and pre-book if necessary. Please consider using the following local operators: (Inclusion of this number doesn't represent any endorsement of the taxi firm)

**Ave Cabs**  
01635 31212

**Cabco Taxis**  
01635 33333

**Go Green Taxis**  
01635 800 990

## Further information about all onward travel

<b>Local Cycle Info</b> <a href="http://westberks.gov.uk">westberks.gov.uk</a> For more information about cycle routes.	<b>National Cycle Info</b> <a href="http://walkwheelcycletrust.org.uk">walkwheelcycletrust.org.uk</a>	<b>Bus Times</b> See timetable displays at bus stops. <a href="http://www.traveline.info">www.traveline.info</a> 0871 200 22 33 calls cost 12p per minute plus your phone company's access charge	<b>PlusBus</b> <a href="http://plusbus.info">plusbus.info</a> PlusBus is a discount price 'bus pass' that you buy with your train ticket. It gives you unlimited bus travel around your chosen town, on participating buses. Visit <a href="http://www.plusbus.info">www.plusbus.info</a>
---	--	---	---

## National Rail Enquiries

<b>Online</b> <a href="http://nationalrail.co.uk">nationalrail.co.uk</a>	<b>NRE App</b> Free National Rail Enquiries app for iOS and Android	<b>Social Media</b> <a href="https://www.facebook.com/nationalrailenq">facebook.com/nationalrailenq</a> <a href="https://twitter.com/nationalrailenq">@nationalrailenq</a>	<b>Alert Me</b> You can sign up to Alert Me messages on the National Rail Enquiries website where you can receive train and platform notifications directly to your smart phone. <a href="http://nationalrail.co.uk/alertme">nationalrail.co.uk/alertme</a>	<b>Contact Centre</b> 03457 48 49 50 Calls cost no more than calls to geographic numbers (01 or 02) and may be recorded.	<b>PlusBike</b> <a href="http://nationalrail.co.uk/plusbike">nationalrail.co.uk/plusbike</a> For more information.
---	--	--	---	--	--



**National Rail**  
Britain's train companies working together



This poster shows details of popular destinations and main, frequent bus routes. Additional services may run, so please check with TraveLine or see posters at local bus stops. Whilst considerable care has been taken to ensure the information contained on this poster is correct and accurate, National Rail cannot accept responsibility for any loss or inconvenience caused by any errors or omissions, or for loss, damage, injury or inconvenience relating to the cancellation, alteration, delay or diversion of a service. For any feedback, please e-mail [comments@onwardtravelposters.com](mailto:comments@onwardtravelposters.com)

Scan this code with your mobile for full station information.