



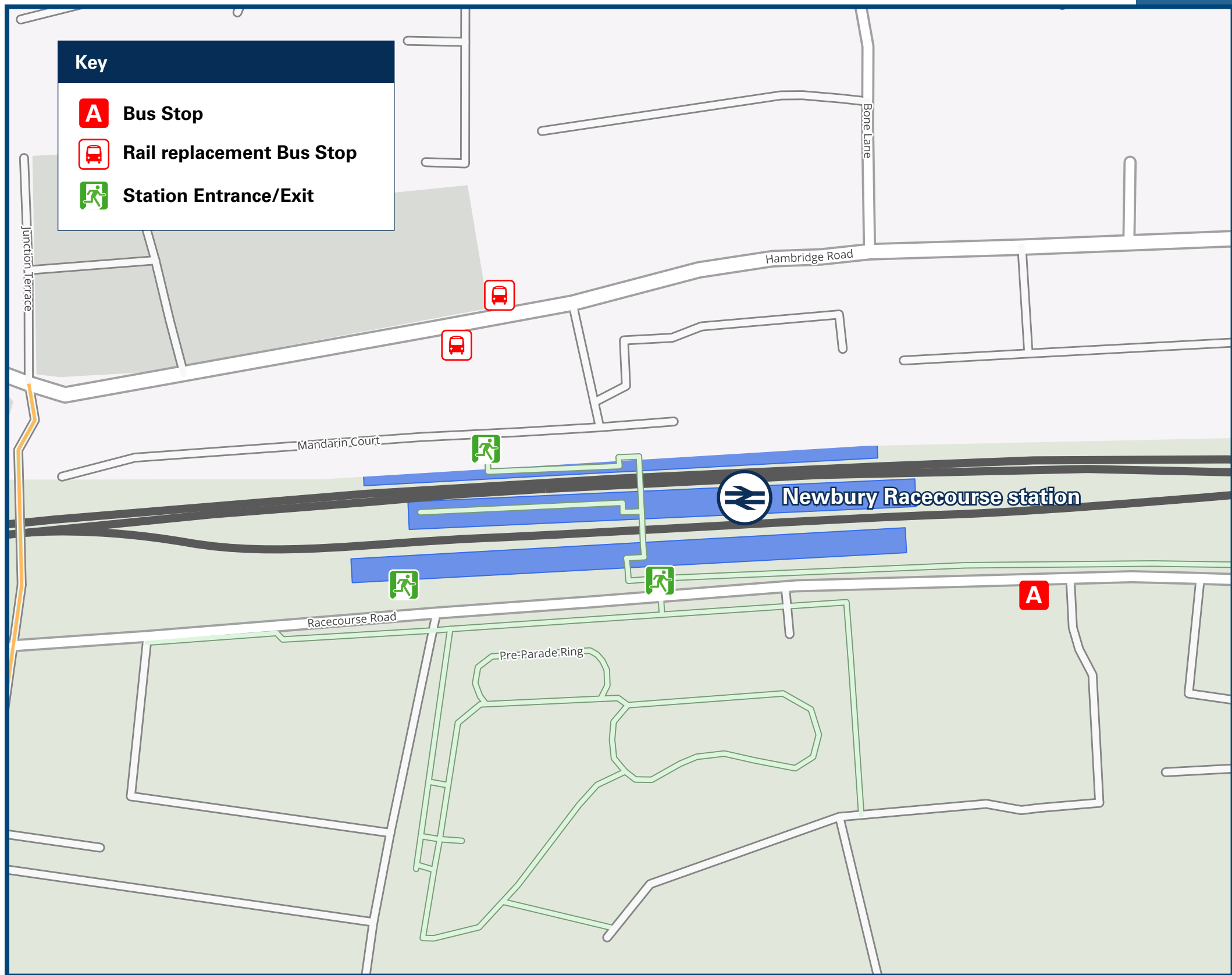
# Newbury Racecourse Station

## Onward Travel Information

### Local area map



### Buses



Rail replacement buses/coaches depart from the bus stops near the station entrance on Hambridge Road.

### Main destinations by bus

(Data correct at January 2025)



DESTINATION	BUS ROUTES	BUS STOP
Greenham Road (Chapel Corner)	9	A
15 minutes walk from this station (see local area map)		
Newbury Wharf / Town Centre (for Shops & Vue Cinema)	9	A
Racecourse Estate (Rondetto Avenue)	9	A

#### Notes

Bus route 9 operates Mondays to Saturdays.  
For bus times and other bus service enquiries, please contact Traveline [www.traveline.info](http://www.traveline.info) (or call: 0871 200 22 33).

### Taxis

Newbury Racecourse station has no taxi rank or cab office. Advance booking is essential, please consider using the following local operators:

Ave Cabs  
01635 31212

Cabco Taxis  
01635 33333

Go Green Taxis  
01635 800 990

### Further information about all onward travel

Local Cycle Info	National Cycle Info	Bus Times	NextBuses	PlusBus
<a href="http://westberks.gov.uk">westberks.gov.uk</a> For more information about cycle routes.	<a href="http://sustrans.org.uk">sustrans.org.uk</a> Sustrans is the UK's leading sustainable transport charity.	See timetable displays at bus stops. <a href="http://www.traveline.info">www.traveline.info</a> 0871 200 22 33 calls cost 15p per minute plus your phone company's access charge	Find the bus times for your stop. Search for a bus stop by entering a postcode, street & town or a stop name & town.	<a href="http://plusbus.info">plusbus.info</a> A discount price 'bus pass' that you buy with your train ticket. It gives you unlimited bus travel around your chosen town, on participating buses.

### National Rail Enquiries

Online	NRE App	Social Media	Alert Me	Contact Centre	PlusBike
<a href="http://nationalrail.co.uk">nationalrail.co.uk</a>	Free National Rail Enquiries app for iOS and Android	<a href="https://www.facebook.com/nationalrailenq">facebook.com/nationalrailenq</a> <a href="https://twitter.com/nationalrailenq">@nationalrailenq</a>	You can sign up to Alert Me messages on the National Rail Enquiries website where you can receive train and platform notifications directly to your smart phone. <a href="http://nationalrail.co.uk/alertme">nationalrail.co.uk/alertme</a>	03457 48 49 50 Calls cost no more than calls to geographic numbers (01 or 02) and may be recorded.	<a href="http://nationalrail.co.uk/plusbike">nationalrail.co.uk/plusbike</a> For more information.



National Rail  
Britain's train companies working together



This poster shows details of popular destinations and main, frequent bus routes. Additional services may run, so please check with Traveline or see posters at local bus stops. Whilst considerable care has been taken to ensure the information contained on this poster is correct and accurate, National Rail cannot accept responsibility for any loss or inconvenience caused by any errors or omissions, or for loss, damage, injury or inconvenience relating to the cancellation, alteration, delay or diversion of a service. For any feedback, please e-mail [comments@onwardtravelposters.com](mailto:comments@onwardtravelposters.com)

Scan this code with your mobile for full station information.