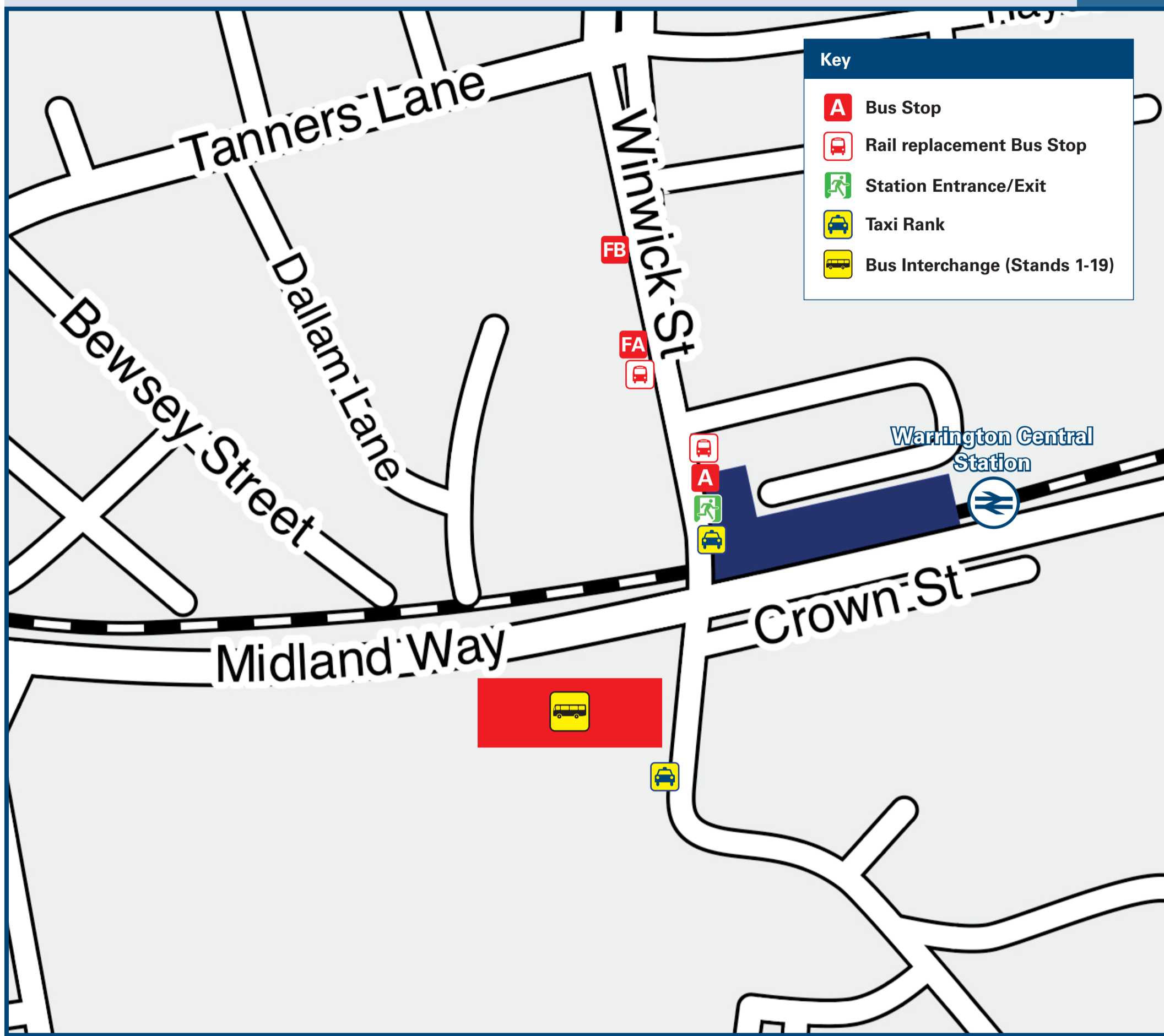




# Warrington Central Station

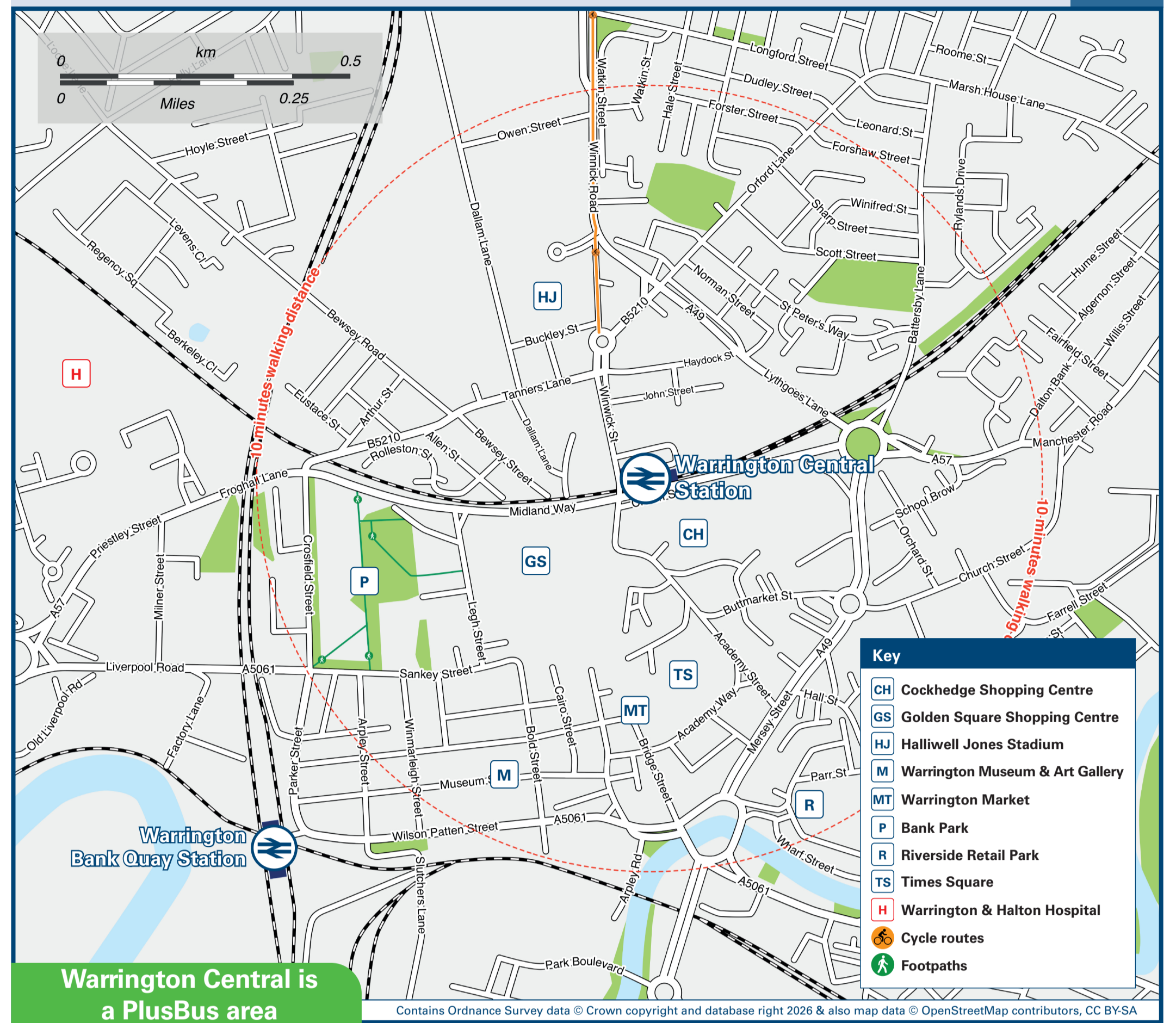
## Onward Travel Information

### Buses and Taxis



Rail replacement buses Pick up / Drop Off at the bus stops outside the station entrance.

### Local area map



Warrington Central is a PlusBus area

Add PlusBus to your train ticket—now available on eTicket from leading rail ticketing apps—for unlimited bus travel in the PlusBus zone in your destination town or city. Visit [www.plusbus.info](http://www.plusbus.info)

### Main destinations by bus

(Data correct at February 2026)

DESTINATION	BUS ROUTES	BUS STOP
Altrincham	5	Bus Interchange
Anderton (for the Anderton Boat Lift)	9A	Bus Interchange
● Appleton (Blackcap Rd)	7	Bus Interchange
● Appleton Thom	8	Bus Interchange
● Bewsey	16, 16A 329, 360	Bus Interchange F.A, Bus Inter
● Birchwood	17, 25, 28	Bus Interchange
● Bruche	1, 2, 3, 4, 17, 28, 28A*, 100	Bus Interchange
Burtonwood	329	F.A, Bus Interchange
Bus Interchange	3 minutes walk from this station - see Local area map for directions	
● Callands	17	Bus Interchange
● Cental Avenue (Wilderspool)	5, 6, 7, 8, 9, 9A	Bus Interchange
● Cinnamon Brow	25	Bus Interchange
● Chapelford	13	Bus Interchange
● Cobbs Estate	7, 8	Bus Interchange
● Collins Green	329	F.A, Bus Inter
● Comberbach	9, 9A	Bus Interchange
● Culcheth	19, 28, 28A*	F.B, Bus Inter
● Dallam	16, 16A	Bus Interchange
● Daresbury	62A, X30	Bus Interchange
● Dudlow Green	7	Bus Interchange
● Earlestown	22, 22A*	F.B, Bus Interchange
● Farrell Street	11, 12	Bus Interchange
● Fearnhead	17, 25	Bus Interchange
● Gemini Retail Park (for Ikea)	17	Bus Interchange
● Gorse Covert	25	Bus Interchange
● Grappenhall	5, 5A, 6	Bus Interchange
● Grappenhall Heys	8	Bus Interchange

DESTINATION	BUS ROUTES	BUS STOP
● Great Sankey	7 (Arriva), 13, 14, 15, 32, 110	Bus Interchange
Higher Walton	X30	Bus Interchange
● Hulme (Cleveland Road)	20, 21	F.B, Bus Interchange
● Latchford Village	1, 2, 5A, 11, 12	Bus Interchange
Leigh	19, 28, 28A*	F.B, Bus Interchange
Lingley Mere	13	Bus Interchange
● Locking Stumps	25, 28, 28A*	Bus Interchange
● Longford	329, 360 19, 20, 21, 22, 22A*	F.A, Bus Interchange F.B, Bus Inter
Lymm	5, 5A	Bus Interchange
● Martinscroft	3, 100	Bus Interchange
Newton-le-Willows	360	F.A, Bus Interchange
Northwich	22, 22A*	F.B, Bus Interchange
Northwich	9, 9A	Bus Interchange
● Oakwood	17, 25, 28	Bus Interchange
● Orford Avenue	20, 21	F.B, Bus Inter
● Owen's Corner	7, 9, 9A	Bus Interchange
● Padgate	4, 17, 28, 28A*	Bus Interchange
Partington	5A	Bus Interchange
● Penketh	7 (Arriva), 14, 15, 32, 110	Bus Interchange
Preston Brook	X30	Bus Interchange
Risley Prison	28, 28A*	Bus Interchange
Runcom	62, 110, X30	Bus Interchange
● Sankey Bridges	32	Bus Interchange
St Helens	329	F.A, Bus Inter
● Statham	5, 5A	Bus Interchange
● Stockton Heath	5, 6, 7, 8, 9, 9A, 62	Bus Interchange

DESTINATION	BUS ROUTES	BUS STOP
Stretton	7, 8, 9, 9A	Bus Interchange
● Thelwall	5, 5A	Bus Interchange
Vulcan Village	22	F.B, Bus Inter
Walton	X30	Bus Interchange
Walton Gardens	62	Bus Interchange
● Warrington Bank Quay Railway Station	15 minutes walk from this station - see Local area map for directions 5, 5A, 6, 7, 8, 9, 9A, 17	Bus Interchange
● Warrington General Hospital	329#	Bus Interchange
● Westbrook Centre	16, 16A	Bus Interchange
● Westy	17	Bus Interchange
● Westy	1, 2, 11, 12	Bus Interchange
● Winwick	329, 360	F.A, Bus Interchange
● Woolston	19, 22, 22A* 3, 4, 100	F.B, Bus Interchange Bus Interchange

#### Notes

- PlusBus destination, please see below for details.
- For bus times and days of operation please contact Traveline on [www.traveline.info](http://www.traveline.info) or call: 0871 200 22 33
- Direct trains operate to this destination from this station.
- \* Bus routes 22A & 28A operate evenings services Mondays to Saturdays, and all day Sundays.
- # To this destination bus route 329 operates a limited Mondays to Fridays service, only.

### Taxis

Warrington Central station is a major station where taxis are usually on a rank. Advance booking is not normally necessary, unless arriving early in the morning or late at night. Operators who may accept bookings include: (Inclusion of this number doesn't represent any endorsement of the taxi firm)

**Abba Cars**  
01925 444 444

**Direct Taxi Warrington**  
01925 244 244

**Lymmited Taxis**  
01925 393 111.

### Further information about all onward travel

<b>Local Cycle Info</b> <a href="http://warrington.gov.uk">warrington.gov.uk</a> <small>For more information about cycle routes.</small>	<b>National Cycle Info</b> <a href="http://walkwheelcycletrust.org.uk">walkwheelcycletrust.org.uk</a>	<b>Bus Times</b> <small>See timetable displays at bus stops.</small> <a href="http://www.traveline.info">www.traveline.info</a> <b>0871 200 22 33</b> <small>call cost 12p per minute plus your phone company's access charge</small>	<b>PlusBus</b> <a href="http://plusbus.info">plusbus.info</a> <small>PlusBus is a discount price 'bus pass' that you buy with your train ticket. It gives you unlimited bus travel around your chosen town, on participating buses. Visit <a href="http://www.plusbus.info">www.plusbus.info</a></small>
--	--	---	--

### National Rail Enquiries

<b>Online</b> <a href="http://nationalrail.co.uk">nationalrail.co.uk</a>	<b>NRE App</b> <b>Free National Rail Enquiries app for iOS and Android</b>	<b>Social Media</b> <a href="https://facebook.com/nationalrailenq">facebook.com/nationalrailenq</a> <a href="https://twitter.com/nationalrailenq">@nationalrailenq</a>	<b>Alert Me</b> <small>You can sign up to Alert Me messages on the National Rail Enquiries website where you can receive train and platform notifications directly to your smart phone.</small> <a href="http://nationalrail.co.uk/alertme">nationalrail.co.uk/alertme</a>	<b>Contact Centre</b> <b>03457 48 49 50</b> <small>Calls cost no more than calls to geographic numbers (01 or 02) and may be recorded.</small>	<b>PlusBike</b> <a href="http://nationalrail.co.uk/plusbike">nationalrail.co.uk/plusbike</a> <small>For more information.</small>
---	---	--	--	--	---



This poster shows details of popular destinations and main, frequent bus routes. Additional services may run, so please check with Traveline or see posters at local bus stops. Whilst considerable care has been taken to ensure the information contained on this poster is correct and accurate, National Rail cannot accept responsibility for any loss or inconvenience caused by any errors or omissions, or for loss, damage, injury or inconvenience relating to the cancellation, alteration, delay or diversion of a service. For any feedback, please e-mail [comments@onwardtravelposters.com](mailto:comments@onwardtravelposters.com)

Scan this code with your mobile for full station information.