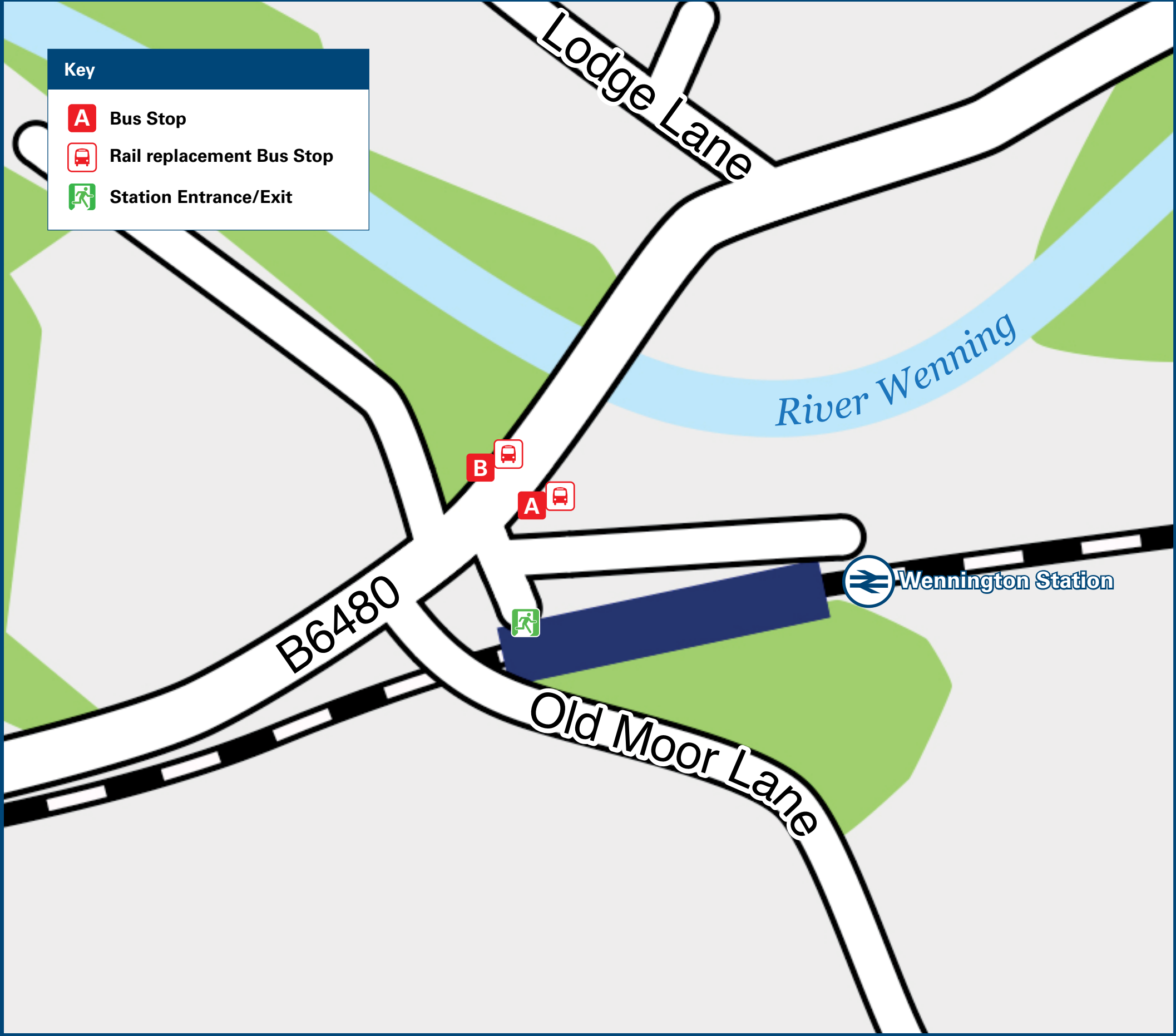




Wennington Station

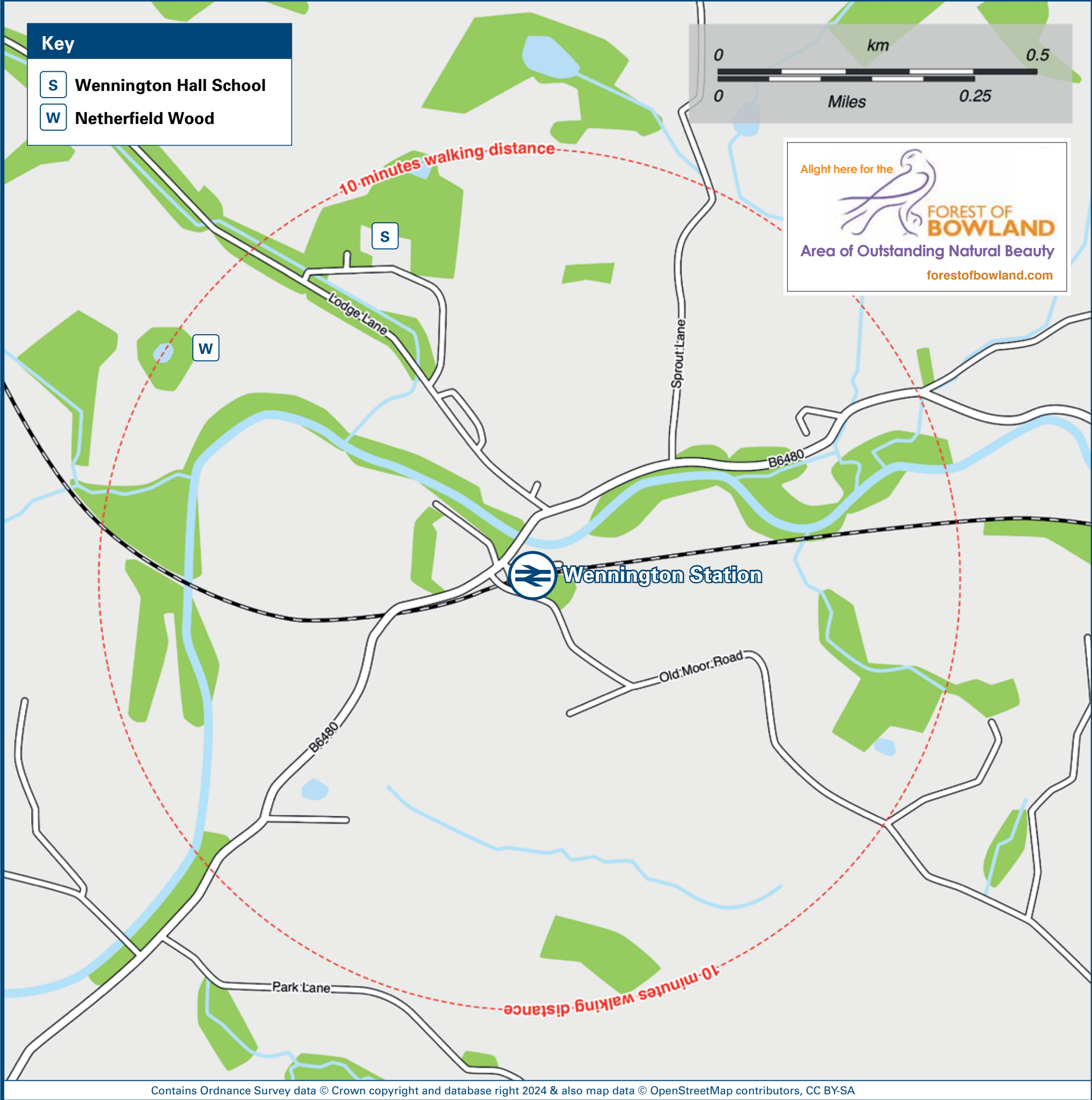
Onward Travel Information

Buses



Rail replacement buses Pick Up / Drop Off at the bus stops on the main road next to the station (Station side for Lancaster, opposite side for Settle).

Local area map




Main destinations by bus


(Data correct at December 2024)



DESTINATION	BUS ROUTES	BUS STOP
Brookhouse	80*, 81	A
Burrow (Nether Burrow)	81	B
Caton	80*, 81	A
Claughton	80*, 81	A
Halton	81	A

DESTINATION	BUS ROUTES	BUS STOP
Hornby	81	A
Kirkby Lonsdale	81	B
Lancaster (Business Park & Hotels)	80*, 81	A
Lancaster (City Centre/ Bus Station) 	80*, 81	A
Melling	81	B

DESTINATION	BUS ROUTES	BUS STOP
Tunstall	81	B
Wray	80*, 81	A
Wrayton (Turn)	81	B

Notes
Bus route 81 operates daily. For bus times please see bus stop timetables or contact Traveline on 0871 200 22 33.  Direct trains operate to this destination from this station. * Bus route 80 operates one evening bus Mondays to Fridays only. AONB Forest of Bowland AONB; www.forestofbowland.com

Taxis

Wennington Station has no taxi rank or cab office. Advance booking is essential, please consider using the following local operators: (Inclusion of this number doesn't represent any endorsement of the taxi firm)

Bentham Taxis
07768 571 407

Kaz Cars
07484 162 156

848 Taxis
01524 848 848

Further information about all onward travel

Local Cycle Info	National Cycle Info	Bus Times	NextBuses	PlusBus
lancaster.gov.uk For more information about cycle routes.	sustrans.org.uk Sustrans is the UK's leading sustainable transport charity.	See timetable displays at bus stops. www.traveline.info 0871 200 22 33 calls cost 15p per minute plus your phone company's access charge	Find the bus times for your stop. Search for a bus stop by entering a postcode, street & town or a stop name & town.	plusbus.info A discount price 'bus pass' that you buy with your train ticket. It gives you unlimited bus travel around your chosen town, on participating buses.

National Rail Enquiries

Online	NRE App	Social Media	Alert Me	Contact Centre	PlusBike
nationalrail.co.uk	Free National Rail Enquiries app for iOS and Android	facebook.com/nationalrailenq @nationalrailenq	You can sign up to Alert Me messages on the National Rail Enquiries website where you can receive train and platform notifications directly to your smart phone. nationalrail.co.uk/alertme	03457 48 49 50 Calls cost no more than calls to geographic numbers (01 or 02) and may be recorded.	nationalrail.co.uk/plusbike For more information.



National Rail
Britain's train companies working together



This poster shows details of popular destinations and main, frequent bus routes. Additional services may run, so please check with Traveline or see posters at local bus stops. Whilst considerable care has been taken to ensure the information contained on this poster is correct and accurate, National Rail cannot accept responsibility for any loss or inconvenience caused by any errors or omissions, or for loss, damage, injury or inconvenience relating to the cancellation, alteration, delay or diversion of a service. For any feedback, please e-mail comments@onwardtravelposters.com

Scan this code with your mobile for full station information.