



# Rowley Regis Station

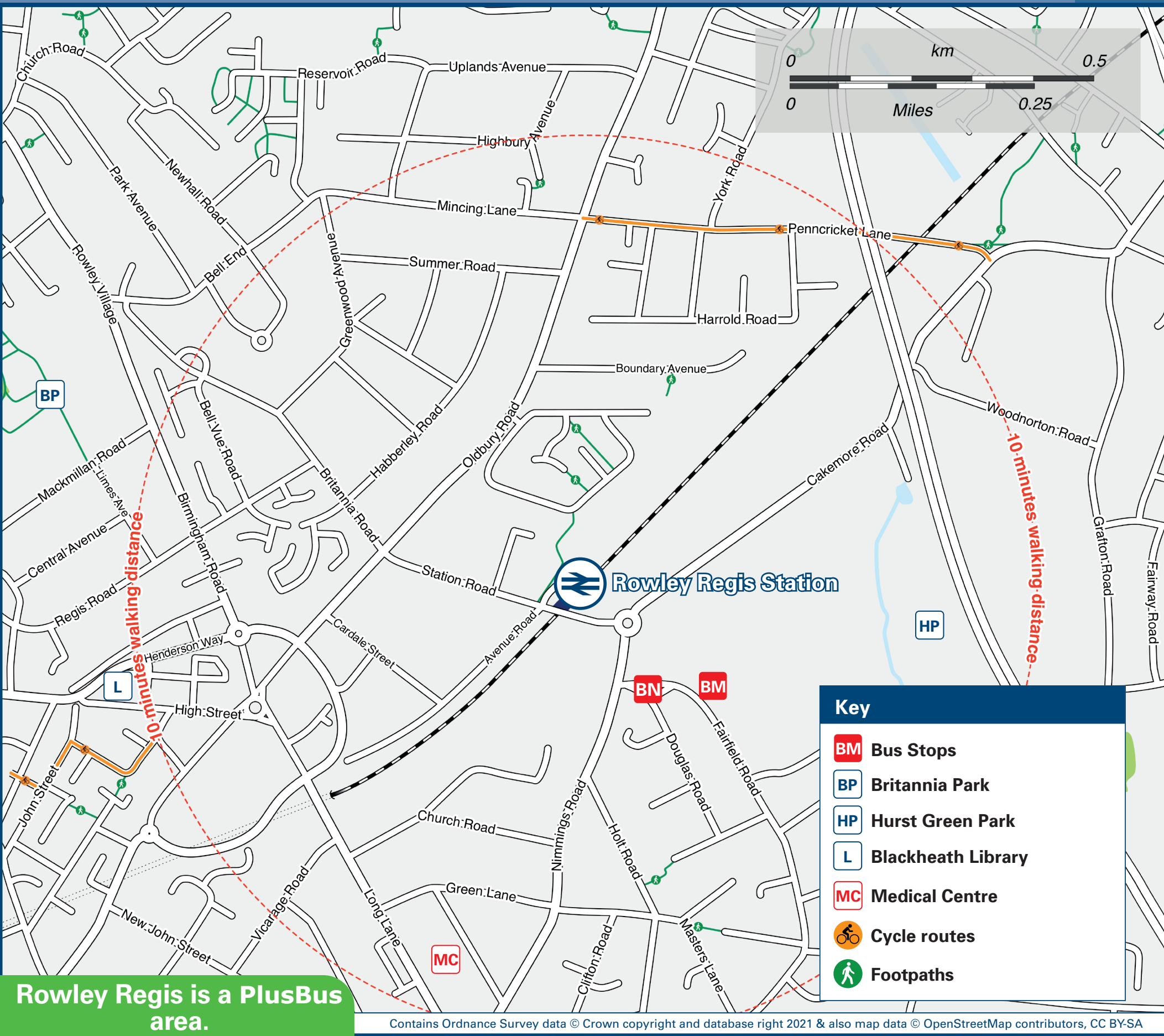
## Onward Travel Information

### Buses and Cycle



Rail replacement buses/coaches will collect from (picks-up and sets-down on) Station Road, located at the main entrance to the station building.

### Local area map



Rowley Regis is a PlusBus area.



**PlusBus** is a discount price 'bus pass' that you buy with your train ticket. It gives you unlimited bus travel around your chosen town, on participating buses. Visit [www.plusbus.info](http://www.plusbus.info)

### Main destinations by bus

(Data correct at July 2023)



DESTINATION	BUS ROUTES	BUS STOP
Bearwood	13A	BM
Birmingham City Centre	13A	BM
	231*	BK
Blackheath (Town Centre)	4, 4H, 4M	B
	13A	BN
Botanical Gardens	13A	BM
Brandhall	13A	BM
Brickhouse Farm	4M	B
Caldmore	4, 4H, 4M	A
	4H	B
Coombeswood	231*	BL
Cradley Heath Interchange	4M	B
Five Ways	13A	BM

DESTINATION	BUS ROUTES	BUS STOP
Fullbrook	4, 4H, 4M	A
	231*	BL
Halesowen	4H	B
Hayley Green	4H	B
	231*	BL
Hurst Green	13A	BM
Lamberts End	4, 4H, 4M	A
Merry Hill Bus Station	4M	B
National Indoor Arena	13A	BM
Oldbury Interchange	4, 4H, 4M	A
Old Hill	4M	B
Palfrey	4, 4H, 4M	A
Rotton Park	13A	BM
Sandwell and District Hospital	4, 4H, 4M	A

DESTINATION	BUS ROUTES	BUS STOP
Sandwell and Dudley Station	4, 4H, 4M	A
Stone Cross	4, 4H, 4M	A
Tame Bridge Station	4, 4H, 4M	A
Walsall	4, 4H, 4M	A
Warley	13A	BM
Warley Woods	13A	BM
West Bromwich	4, 4H, 4M	A
Whiteheath Gate	4, 4H, 4M	A

#### Notes

- **PlusBus** destination, please see below for details.
- Bus routes 4, 4M and 13A run daily, Mondays to Sundays.
- Bus routes 4H and 13B run Mondays to Saturdays only. No Sunday services.
- \* Bus route 231 runs Mondays to Fridays between 0725 and 1730 and Saturdays between 0825 and 1730 only.
- 🚆 Direct trains operate to this destination from this Station.

### Taxis

Rowley Regis Station has no taxi rank or cab office. Advance booking is essential, please consider using the following local operators: (Inclusion of this number doesn't represent any endorsement of the taxi firm)

**Brookfleet Taxis**  
0121 559 8585

**Blackheath Cars & Taxis**  
0121 559 5559

**Road Runners Taxis 24/7 Local Cars**  
0121 559 5959

### Further information about all onward travel

Local Cycle Info	National Cycle Info	Bus Times	NextBuses	PlusBus
<a href="http://www.tfwm.org.uk/plan-your-journey/ways-to-travel/cycling-and-walking">www.tfwm.org.uk/plan-your-journey/ways-to-travel/cycling-and-walking</a> For more information about cycle routes.	<a href="http://sustrans.org.uk">sustrans.org.uk</a> Sustrans is the UK's leading sustainable transport charity.	See timetable displays at bus stops. <a href="http://www.traveline.info">www.traveline.info</a> 0871 200 22 33 call cost 12p per minute plus your phone company's access charge	Find the bus times for your stop. Search for a bus stop by entering a postcode, street & town or a stop name & town. <a href="http://www.nextbuses.com">www.nextbuses.com</a>	<a href="http://plusbus.info">plusbus.info</a> A discount price 'bus pass' that you buy with your train ticket. It gives you unlimited bus travel around your chosen town, on participating buses.

### National Rail Enquiries

Online	NRE App	Social Media	Alert Me	Contact Centre	PlusBike
<a href="http://nationalrail.co.uk">nationalrail.co.uk</a>	Free National Rail Enquiries app for iOS and Android	<a href="https://www.facebook.com/nationalrailenq">facebook.com/nationalrailenq</a> <a href="https://twitter.com/nationalrailenq">@nationalrailenq</a>	You can sign up to Alert Me messages on the National Rail Enquiries website where you can receive train and platform notifications directly to your smart phone. <a href="http://nationalrail.co.uk/alertme">nationalrail.co.uk/alertme</a>	03457 48 49 50 Calls cost no more than calls to geographic numbers (01 or 02) and may be recorded.	<a href="http://nationalrail.co.uk/plusbike">nationalrail.co.uk/plusbike</a> For more information.



**National Rail**  
Britain's train companies working together



This poster shows details of popular destinations and main, frequent bus routes. Additional services may run, so please check with Traveline or see posters at local bus stops. Whilst considerable care has been taken to ensure the information contained on this poster is correct and accurate, National Rail cannot accept responsibility for any loss or inconvenience caused by any errors or omissions, or for loss, damage, injury or inconvenience relating to the cancellation, alteration, delay or diversion of a service. For any feedback, please e-mail [comments@onwardtravelposters.com](mailto:comments@onwardtravelposters.com)

Scan this code with your mobile for full station information.