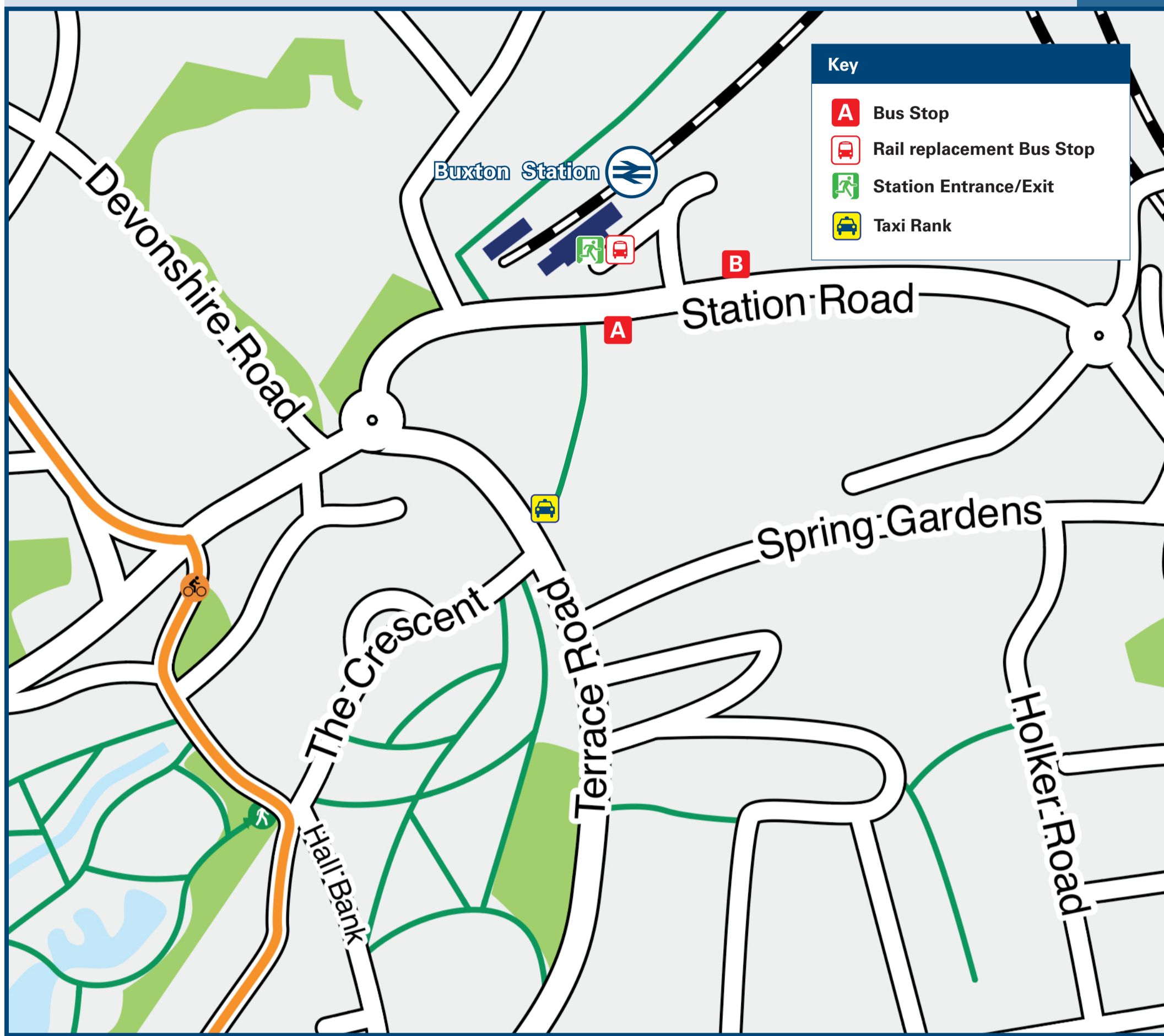




Buxton Station

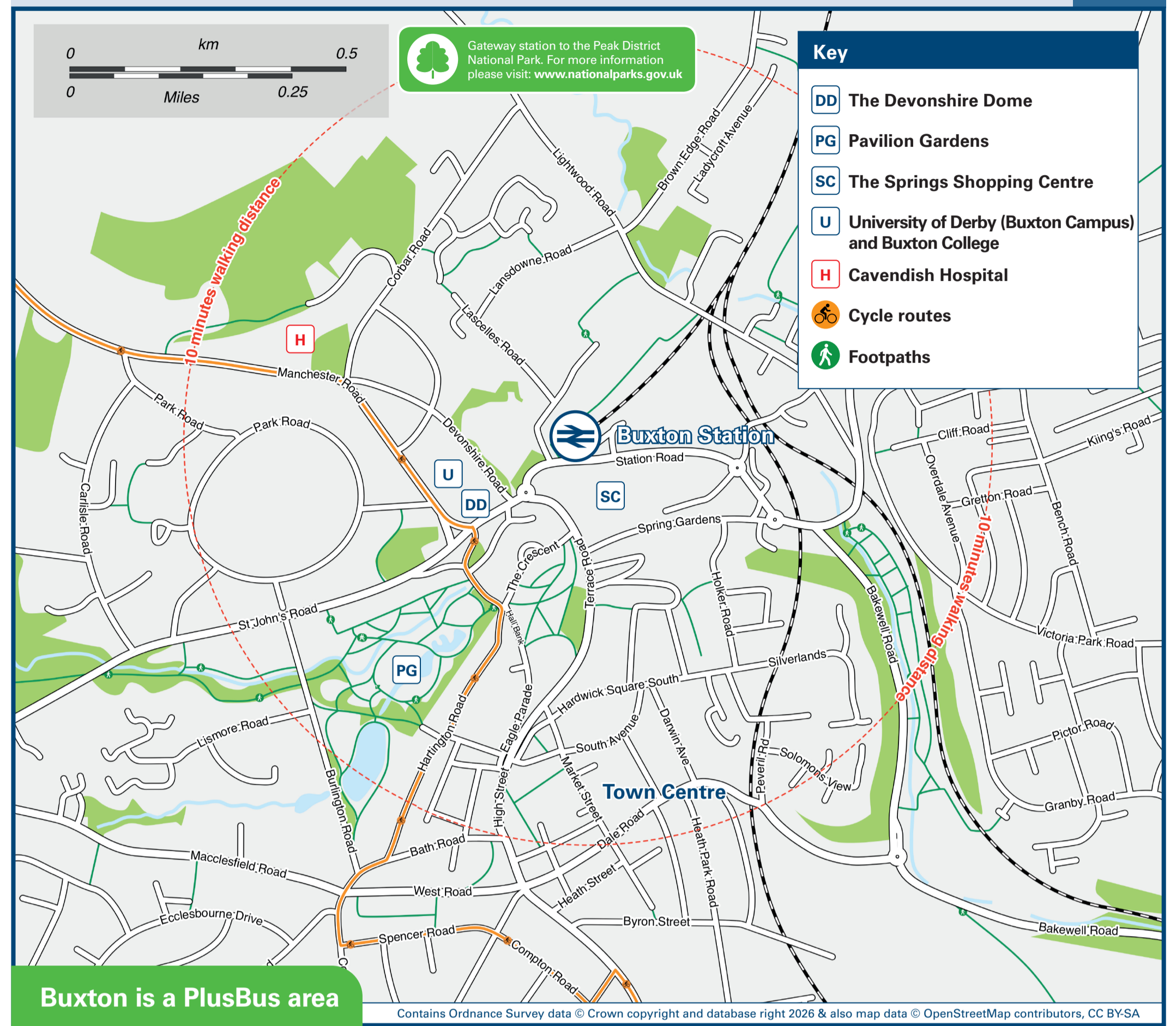
Onward Travel Information

Buses



Rail replacement buses will pick up/drop off from the Rail station bus stop on Station Road.

Local area map



Buxton is a PlusBus area



Add PlusBus to your train ticket—now available on eTicket from leading rail ticketing apps—for unlimited bus travel in the PlusBus zone in your destination town or city. Visit www.plusbus.info

Main destinations by bus

(Data correct at January 2026)

DESTINATION	BUS ROUTES	BUS STOP
Ambergate	TP(Transpeak)	A
Ashbourne	442	A
Ashford-in-the-Water	TP(Transpeak)	A
Bakewell	TP(Transpeak)	A
Belper	TP(Transpeak)	A
Blackshaw Moor	A53**	A
Burbage	58, A53**	A
Buxton (Town Centre / Market Place)	58, 62##, 65, 77*, 185, 186*, 190*, 199, 442*, TP(Transpeak)	A
Calver (Crossroads)	65	A
Castleton	62##	A
Cat & Fiddle	58	A
Chapel-en-le-Frith	190*, 199	B
Chinley	62##	A
Chinley	190*	B
Cromford (High Peak Junction)	TP(Transpeak)	A
Darley Dale	TP(Transpeak)	A
Derby	TP(Transpeak)	A
Disley	199	B
Dove Holes	199	B
Edale	62##	A
Eyam	65	A

DESTINATION	BUS ROUTES	BUS STOP
Fairfield Estate (Buxton)	185, 186*, 199~	B
Great Hucklow	65	A
Grindelford	65	A
Harpur Hill	185, 186*, TP(Transpeak)	A
Hope	62##	A
Horwich End	199	B
Leek	A53**	A
Litton	65	A
Longnor	442*	A
Macclesfield	58	A
Manchester Airport	199	B
Matlock	TP(Transpeak)	A
Matlock Bath	TP(Transpeak)	A
Miller's Dale	65	A
New Mills (Bus Station)	199#	B
Newtown	199	B
Peak Dale	190*, 199(Mon-Sat)	B
Peak Forest	190*	B
Rowsley Peak Village	TP(Transpeak)	A
Sheffield	65	A
Sparrowpit	190*	B
Stockport Interchange	199	B
Stoney Middleton	65	A

DESTINATION	BUS ROUTES	BUS STOP
Taddington	TP(Transpeak)	A
Tideswell	65	A
Tissington (for Dove Dale)	442*	A
Tunstead Milton	199	B
Warslow	442*	A
Whaley Bridge	190*, 199	B

Notes

- PlusBus destination, please see below for details.
- Bus routes 58 operates an hourly daytime service on Mondays to Saturdays, and 5 journeys on Sundays and Bank Holidays.
- Bus route 199 (Skyline 199) operates every 30 minutes daytime Mondays to Saturdays and hourly evenings, Sundays and Bank Holidays.
- Bus route TP(Transpeak) operates hourly daytime daily.
- Bus route 65 operates a limited daily service.
- Further bus services are available from Buxton Market Place.
- For bus times and days of operation please contact Traveline on www.traveline.info or call: 0871 200 22 33
- Direct trains operate to this destination from Buxton Station.
- It's a 10 minutes walk from this station to Buxton Market Place or catch any bus from stop (A).
- Change here for connecting domestic and international airline services.
- * Bus routes 77, 185, 186, 190 & 442 operate limited daytime services on Mondays to Saturdays, only. No evenings or Sundays services.
- ~ Not all bus route 199 journeys call at the Fairfield Estate (Buxton) or Peak Dale, please check the timetable.
- # Bus route 199 calls at New Mills Bus Station early mornings daily only.
- ## Bus routes 62 operates a very limited daily service (3 buses a day).
- ** Bus route A53 operates a limited daytime service on Sundays, only.
- National Park Peak District National Park www.peakdistrict.gov.uk

Taxis

Buxton station has no taxi rank or cab office. Advance booking is essential, please consider using the following local operators: (Inclusion of this number doesn't represent any endorsement of the taxi firm)

Allied
01298 72123

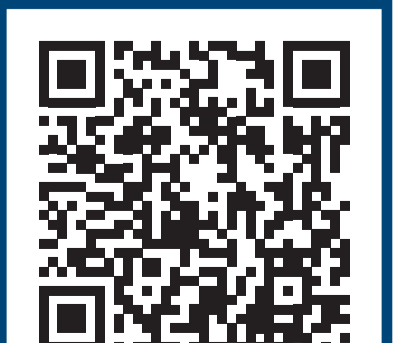
Buxton Radio Taxis
01298 23457

Further information about all onward travel

Local Cycle Info www.derbyshire.gov.uk For more information about cycle routes.	National Cycle Info walkwheelcycletrust.org.uk	Bus Times See timetable displays at bus stops. www.traveline.info 0871 200 22 33 call cost 13p per minute plus your phone company's access charge	PlusBus plusbus.info PlusBus is a discount price 'bus pass' that you buy with your train ticket. It gives you unlimited bus travel around your chosen town, on participating buses. Visit www.plusbus.info
---	--	--	---

National Rail Enquiries

Online nationalrail.co.uk	NRE App Free National Rail Enquiries app for iOS and Android	Social Media facebook.com/nationalrailenq @nationalrailenq	Alert Me You can sign up to Alert Me messages on the National Rail Enquiries website where you can receive train and platform notifications directly to your smart phone. nationalrail.co.uk/alertme	Contact Centre 03457 48 49 50 Calls cost no more than calls to geographic numbers (01 or 02) and may be recorded.	PlusBike nationalrail.co.uk/plusbike For more information.
---	--	---	---	--	--



This poster shows details of popular destinations and main, frequent bus routes. Additional services may run, so please check with Traveline or see posters at local bus stops. Whilst considerable care has been taken to ensure the information contained on this poster is correct and accurate, National Rail cannot accept responsibility for any loss or inconvenience caused by any errors or omissions, or for loss, damage, injury or inconvenience relating to the cancellation, alteration, delay or diversion of a service. For any feedback, please e-mail comments@onwardtravelposters.com

Scan this code with your mobile for full station information.