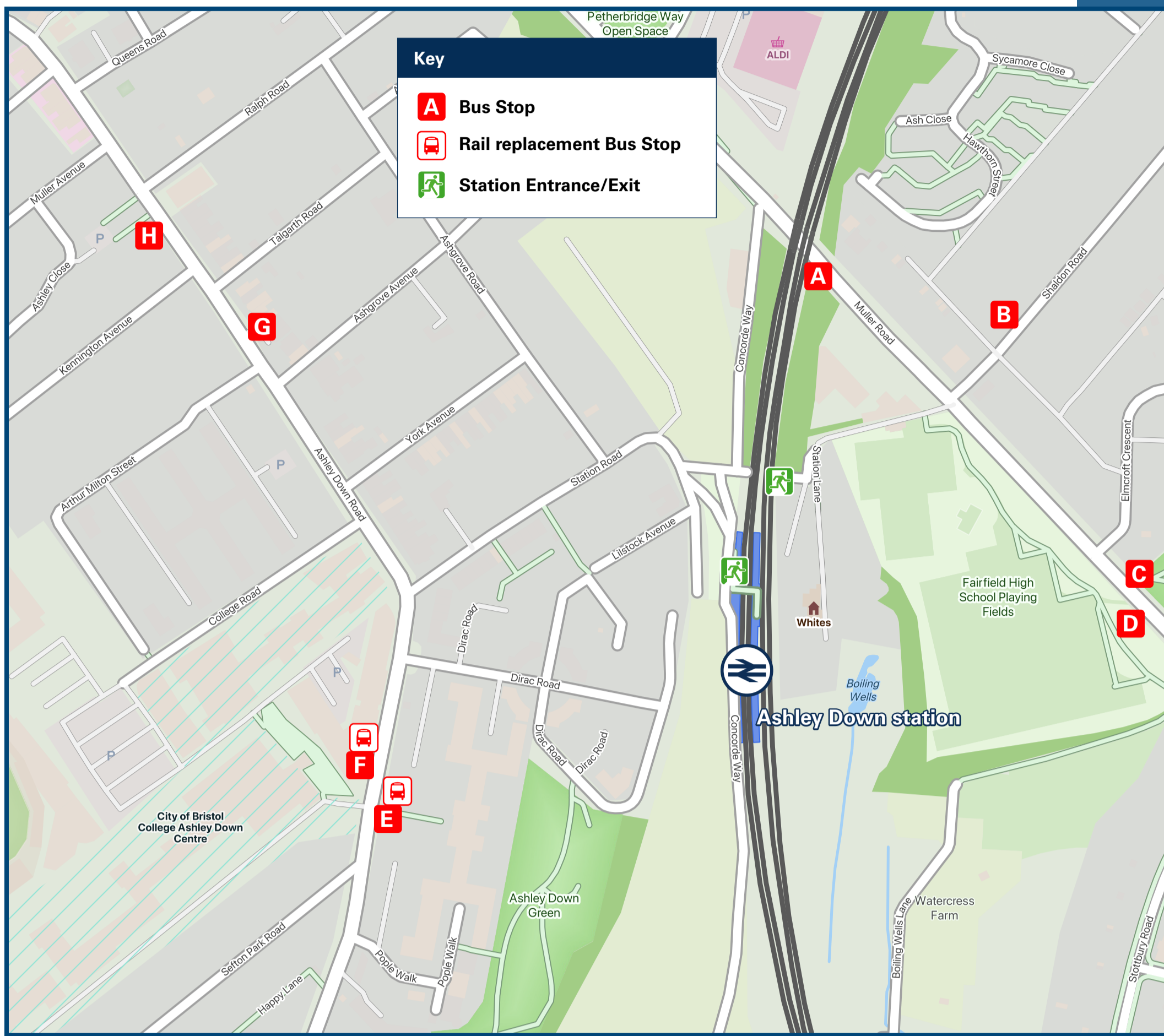




# Ashley Down Station

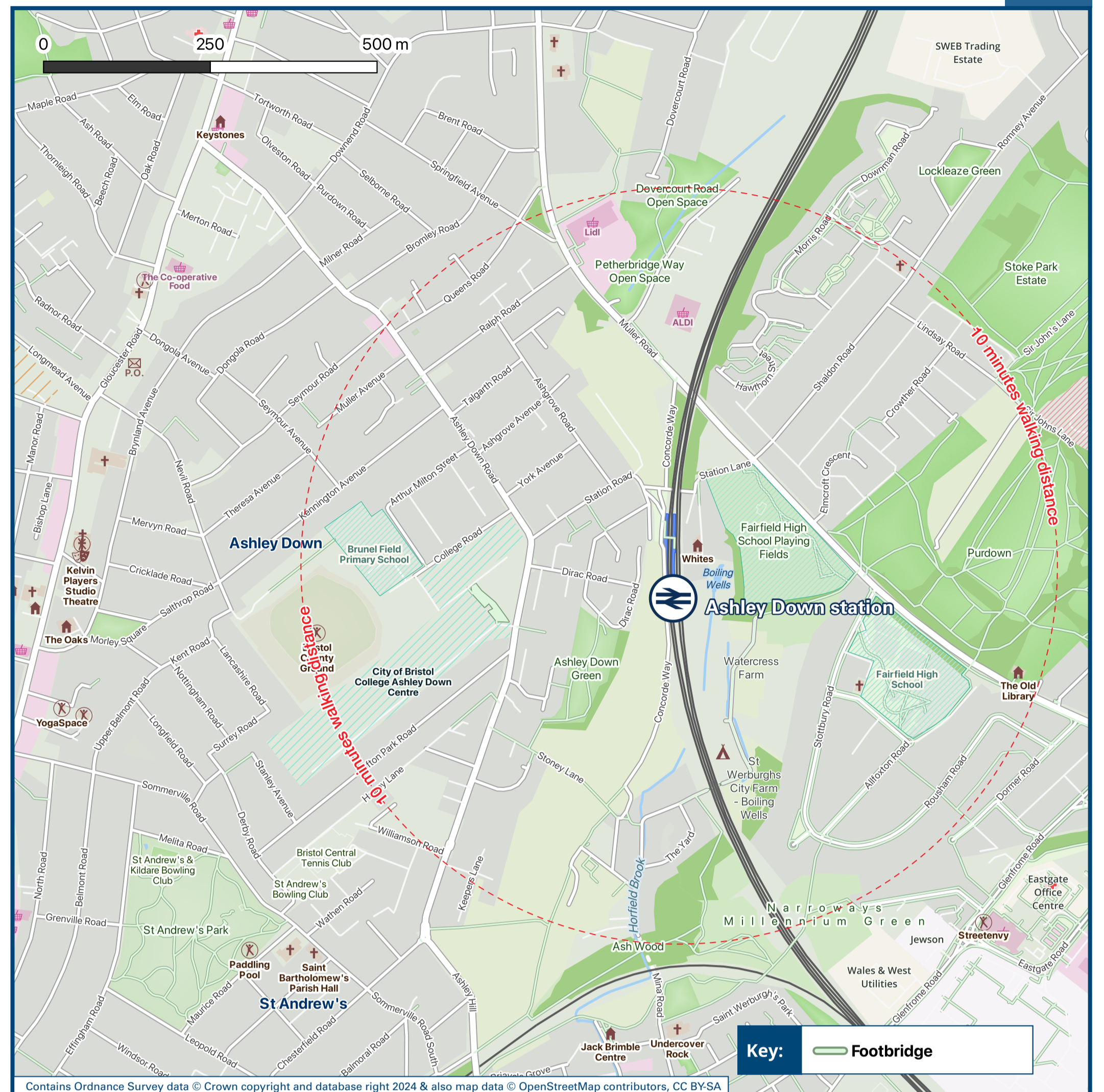
# Onward Travel Information

## Buses



Rail replacement buses/coaches will depart from bus stops on Ashley Down Road (B4052) at Sefton Park Road.

## Local area map



## Main destinations by bus

(Data correct at January 2025)



DESTINATION	BUS ROUTES	BUS STOP
Abbey Wood	70	F, H
Ashton Vale	24	C
Bedminster	24	C
Bristol Aquarium (alight at the City Centre)	24	C
Bristol City Centre	70	E, G
Bristol City Football Club (alight at Dumford Street)	24	C
Bristol Eye Hospital (alight at Broadmead)	24	C
Bristol Hippodrome (alight at the City Centre)	70	E, G
Bristol Rovers Football Club, Memorial Stadium (alight at Downend Road)	17	A
Bristol Royal Hospital for Children (alight at Broadmead)	70	F, H
Bristol Royal Infirmary	24	C
Bristol Temple Meads Station	70	E, G

DESTINATION	BUS ROUTES	BUS STOP	
Broadmead Shopping Centre	24	C	
Cabot Circus Shopping Centre	70	E, G	
City of Bristol College (College Green Centre) - alight at the City Centre	24	C	
Eastgate Centre (Eastville)	17, 24	C	
Eastville Park	17, 24	C	
Fishponds	17	C	
Hanham Common	17	C	
Hillfields (Cossham Hospital)	17	C	
Horfield Common	70	F, H	
Keynsham Church	17#	24	D
Kingswood (Kings Chase Centre)	17	C	
Lockleaze (Gainsborough Square)	24	B, D	
Longwell Green	17	C	
Old Market	24	C	

DESTINATION	BUS ROUTES	BUS STOP
Redcliffe	24	C
Seat Unique Stadium (for Gloucestershire Cricket Club)	15 minutes walk from this station via Kennington Avenue (see maps)	
Southmead Hospital	17	A, D
Staple Hill	24	B, D
Temple Meads (Bristol Temple Meads Station)	70	E, G
University of the West of England (UWE - Frenchay Campus)	70	F, H

**Notes**

Bus routes 17, 24 and 70 run Mondays to Sundays and Public Holidays.

Timetable information is provided at local bus stops indicated on the map above. Alternatively contact [Travelwest.info](http://Travelwest.info) (for bus times and live arrivals)

Local bus services serving the wider area can be accessed via interchange points at Bristol City Centre/Broadmead, Southmead Hospital and University of the West of England (UWE) Frenchay Campus.

Direct trains operate from Ashley Down station to this destination.

Change trains at Bristol Temple Meads Station for Bedminster.

# To this destination bus route 17 operates certain journeys. Please see timetables for details, or contact [Travelwest.info](http://Travelwest.info)

## Taxis

Ashley Down Station has no taxi rank or cab office. Advance booking is essential, please consider using the following local operators: (Inclusion of this number doesn't represent any endorsement of the taxi firm)

**Bristol Taxi**  
0117 287 0247

**Veezu Bristol**  
0117 925 2626

**Dad's Cabs**  
0117 935 0053

## Further information about all onward travel

<b>Local Cycle Info</b> <a href="http://www.travelwest.info">www.travelwest.info</a> For more information about cycle routes.	<b>National Cycle Info</b> <a href="http://sustrans.org.uk">sustrans.org.uk</a> Sustrans is the UK's leading sustainable transport charity.	<b>Bus Times</b> See timetable displays at bus stops.  <a href="http://www.traveline.info">www.traveline.info</a> 0871 200 22 33 call cost 12p per minute plus your phone company's access charge	<b>NextBuses</b> <b>Find the bus times for your stop.</b> Search for a bus stop by entering a postcode, street & town or a stop name & town.	<b>PlusBus</b> <b>plusbus.info</b> A discount price 'bus pass' that you buy with your train ticket. It gives you unlimited bus travel around your chosen town, on participating buses.
---	---	--	--	--

## National Rail Enquiries

<b>Online</b> <a href="http://nationalrail.co.uk">nationalrail.co.uk</a>	<b>NRE App</b> Free National Rail Enquiries app for iOS and Android	<b>Social Media</b> <a href="https://facebook.com/nationalrailenq">facebook.com/nationalrailenq</a> @nationalrailenq	<b>Alert Me</b> You can sign up to Alert Me messages on the National Rail Enquiries website where you can receive train and platform notifications directly to your smart phone. <a href="http://nationalrail.co.uk/alertme">nationalrail.co.uk/alertme</a>	<b>Contact Centre</b> 03457 48 49 50 Calls cost no more than calls to geographic numbers (01 or 02) and may be recorded.	<b>PlusBike</b> <a href="http://nationalrail.co.uk/plusbike">nationalrail.co.uk/plusbike</a> For more information.
---	--	--	---	--	--



**National Rail**  
Britain's train companies working together



This poster shows details of popular destinations and main, frequent bus routes. Additional services may run, so please check with Traveline or see posters at local bus stops. Whilst considerable care has been taken to ensure the information contained on this poster is correct and accurate, National Rail cannot accept responsibility for any loss or inconvenience caused by any errors or omissions, or for loss, damage, injury or inconvenience relating to the cancellation, alteration, delay or diversion of a service. For any feedback, please e-mail [comments@onwardtravelposters.com](mailto:comments@onwardtravelposters.com)

Scan this code with your mobile for full station information.