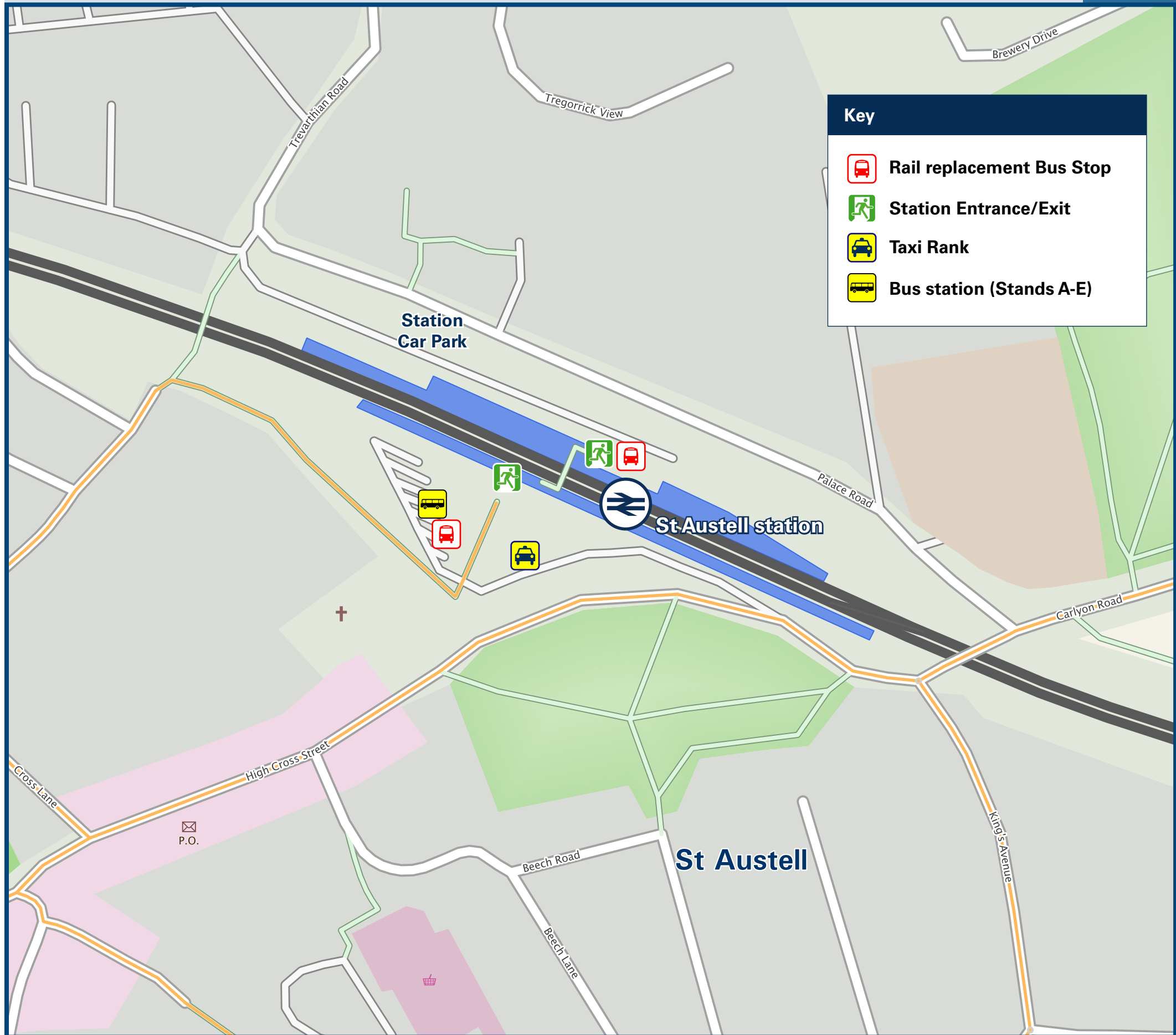




St Austell Station

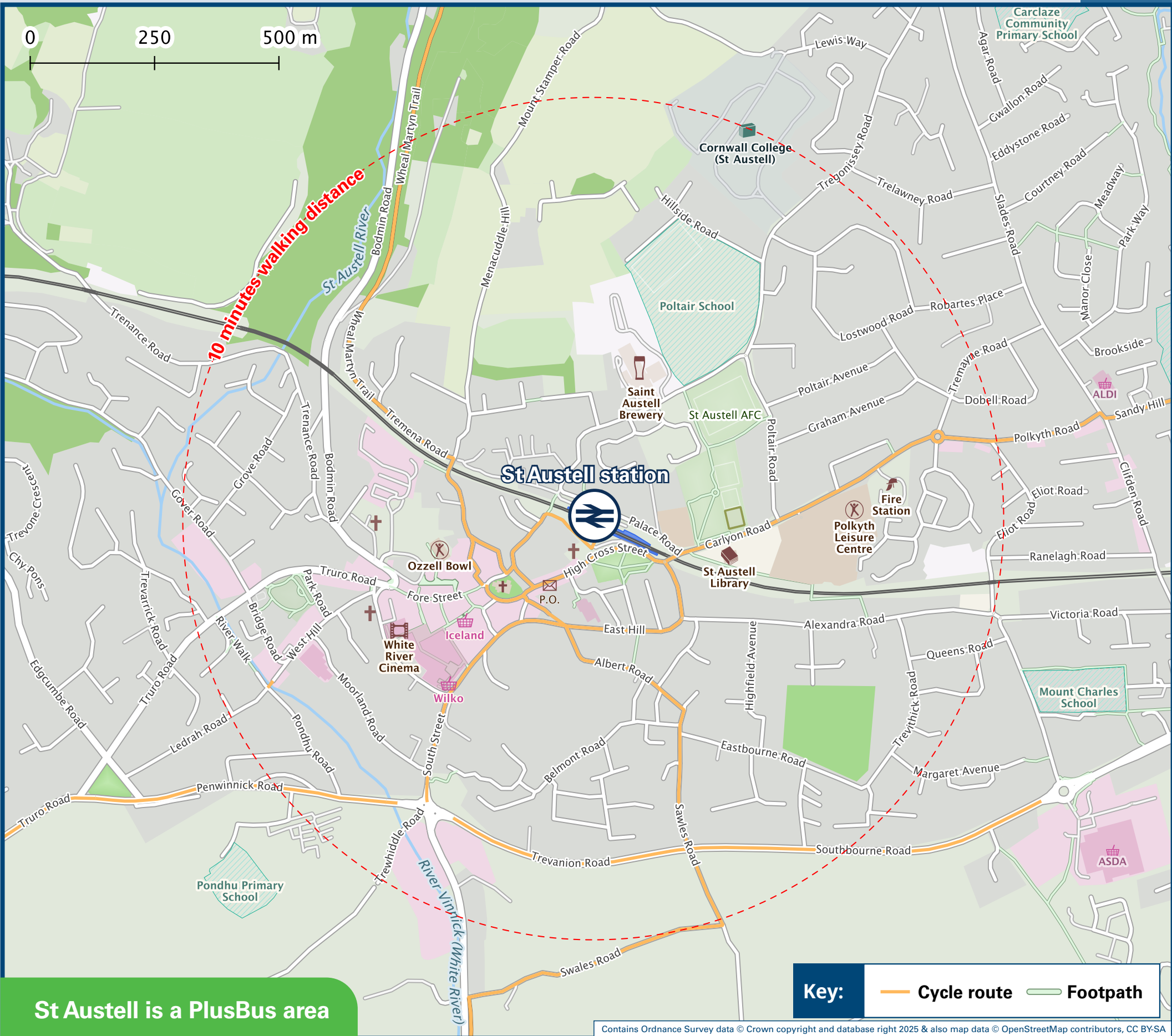
Onward Travel Information

Buses and Taxis



Rail replacement buses/coaches Towards Newquay, Truro and Penzance from the Bus station.
Towards Plymouth from the Station car park.

Local area map



PlusBus
Add **PlusBus** to your train ticket—now available on eTicket from leading rail ticketing apps—for unlimited bus travel in the **PlusBus** zone in your destination town or city. Visit www.plusbus.info

Main destinations by bus

(Data correct at January 2026)



DESTINATION	BUS ROUTES	BUS STOP
Bethel	28*	A
	30	D
Bodmin (Town Centre)	26	D
Boscoppa	30	D
Bugle	26	D
Carclaze	26, 30	D
Carlyon Bay	25	A
Charlestown	24, 24E**, 25	A
Comish Market World	25	A
Duporth (via Two Coves)	25	A
Eden Project	28*	A
Fowey	24, 24E**, 25	A
Foxhole	21, 22, 22A*	C
Fraddon	21, 21A	C
Gorran	23*	A
Grampound	27E#	A
	27	E
Grampound Road	22, 22A*	C
Hewas Water	27E#	A
	27	E
High Street	21, 21A, 22, 22A*	C
Holmbush	30	D
	24, 24E**	A
Lanivet	26	D
London Apprentice	23*	A
	29, 29E**	B
Lost Gardens of Heligan	23*	A
	29	B
Lostwithiel	28*	A

DESTINATION	BUS ROUTES	BUS STOP
Mevagissey	23*	A
	29, 29E**	B
Mount Charles	24, 24E**, 25, 28*	A
	30	D
Nanpean	21, 22, 22A*	C
Newquay	21, 21A	C
Par	24, 24E**, 25	A
Penrice Hospital (St Austell Community Hospital)	25	A
	30	D
Pentewan	23*	A
	29, 29E**	B
Penwithick	26	D
	27E#	A
Probus	22, 22A*	C
	27	E
Quintrell Downs	21, 21A	C
Roche	26	D
St Blazey	24, 24E**, 25, 28*	A
St Blazey Gate	24, 24E**, 25, 28*	A
St Dennis	21, 22, 22A*	C
St Stephen	21A, 22, 22A*	C
Stenalees	26	D
Sticker	27E#	A
	27	E
Summercourt	21A	C
Tregony	51*	A
Tregorrick	29, 29E**	B

DESTINATION	BUS ROUTES	BUS STOP
	27E#	A
Tresillian	22, 22A*	C
	27	E
Treviscoe	22, 22A*	C
Trewoon	21, 21A, 22, 22A*	C
Trezaise	26	D
	27E#	A
Truro	22, 22A*	C
	27	E
Veryan	51*	A
Whitemoor	21, 22, 22A*	C

Notes

- PlusBus destination, please see below for details.
- PlusBus tickets are valid within the St Austell Plusbus zone.
- For bus times and days of operation please see bus timetables at the Bus Station adjacent to this station or contact Traveline on www.traveline.info or call: 0871 200 22 33
- Direct trains operate from this Station to this destination.
- For connecting train services to this destination, please change trains at Par.
- Alight here for the Bodmin & Wenford Railway
- * Bus routes 22A, 23, 28 & 51 operate limited Mondays to Saturdays service, only.
- # Bus route 27E operates an evening service on Mondays to Saturdays, and a daytime service on Sundays, only.
- ** Bus routes 24E & 29E operate evening services on Mondays to Saturdays, only. No daytime or Sunday services.



Taxis

St Austell station is served by a taxi rank or a cab office. Check availability before travelling, and pre-book if necessary. Please consider using the following local operators: (Inclusion of this number doesn't represent any endorsement of the taxi firm)

Spot On Cabs
01726 778 77

A2B Taxis
01726 666 000

BW Cars
01726 473 370

Further information about all onward travel

Local Cycle Info	National Cycle Info	Bus Times	PlusBus
cornwall.gov.uk For more information about cycle routes.	walkwheelcycletrust.org.uk	See timetable displays at bus stops. www.traveline.info 0871 200 22 33 calls cost 12p per minute plus your phone company's access charge	plusbus.info PlusBus is a discount price 'bus pass' that you buy with your train ticket. It gives you unlimited bus travel around your chosen town, on participating buses. Visit www.plusbus.info

National Rail Enquiries

Online	NRE App	Social Media	Alert Me	Contact Centre	PlusBike
nationalrail.co.uk	Free National Rail Enquiries app for iOS and Android	facebook.com/nationalrailenq @nationalrailenq	You can sign up to Alert Me messages on the National Rail Enquiries website where you can receive train and platform notifications directly to your smart phone. nationalrail.co.uk/alertme	03457 48 49 50 Calls cost no more than calls to geographic numbers (01 or 02) and may be recorded.	nationalrail.co.uk/plusbike For more information.



This poster shows details of popular destinations and main, frequent bus routes. Additional services may run, so please check with Traveline or see posters at local bus stops. Whilst considerable care has been taken to ensure the information contained on this poster is correct and accurate, National Rail cannot accept responsibility for any loss or inconvenience caused by any errors or omissions, or for loss, damage, injury or inconvenience relating to the cancellation, alteration, delay or diversion of a service. For any feedback, please e-mail comments@onwardtravelposters.com

Scan this code with your mobile for full station information.