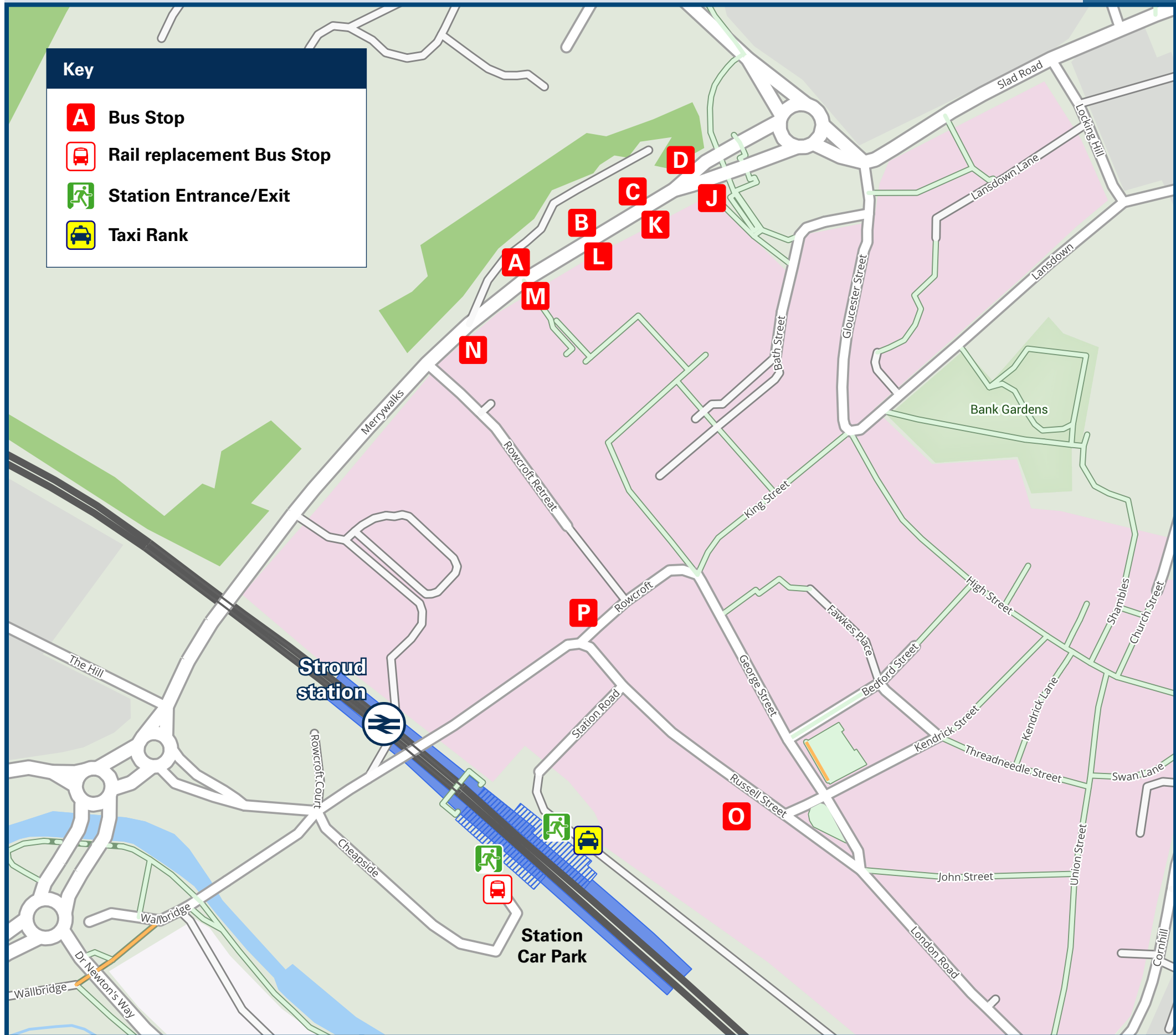




Stroud Station

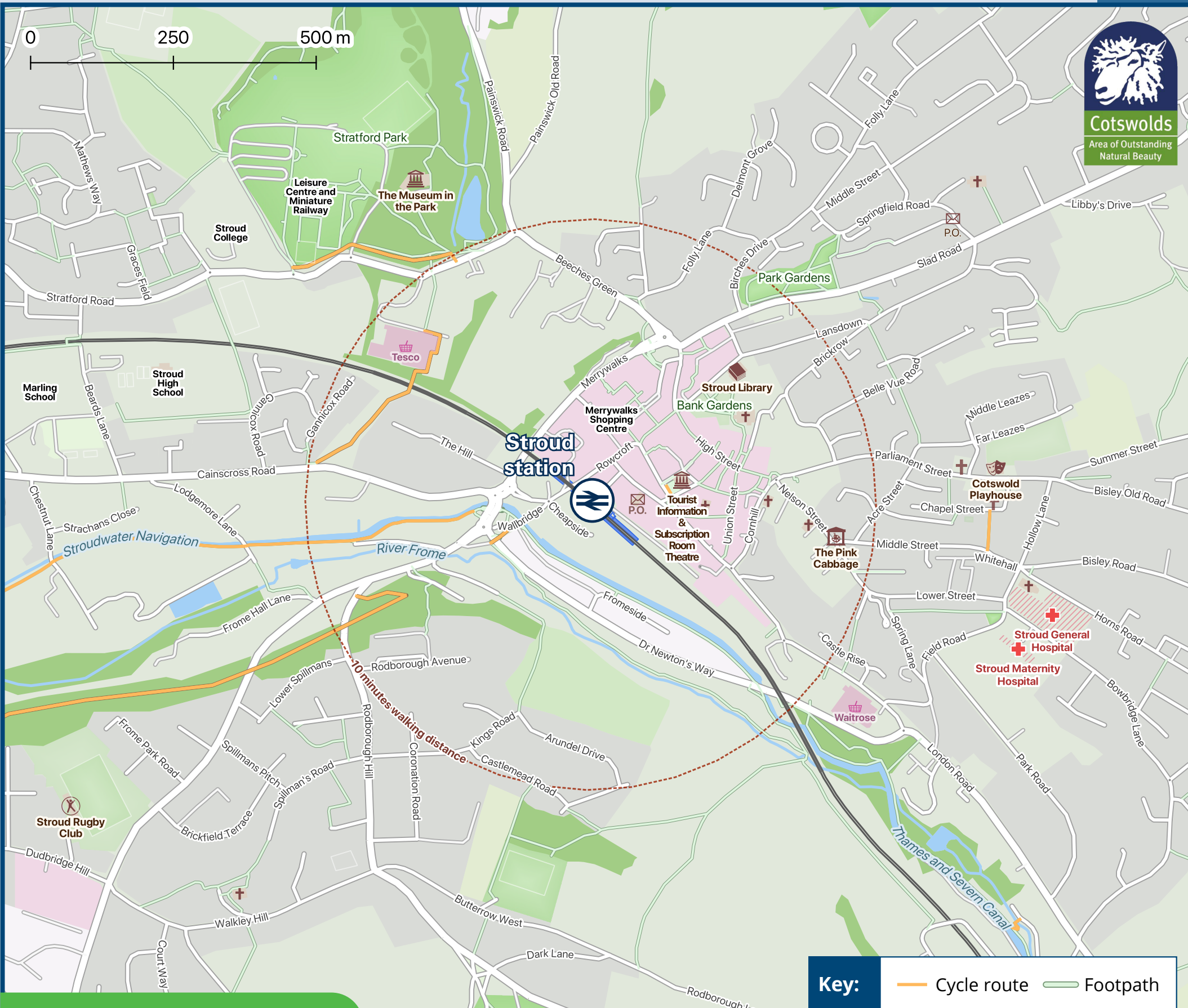
Onward Travel Information

Buses and Taxis



Rail replacement buses depart from the car park on platform 2 side for both directions.

Local area map



Stroud is a PlusBus area



Add **PlusBus** to your train ticket—now available on eTicket from leading rail ticketing apps—for unlimited bus travel in the **PlusBus** zone in your destination town or city. Visit www.plusbus.info

Main destinations by bus

(Data correct at January 2026)



DESTINATION	BUS ROUTES	BUS STOP
Avening	620*	P, K
Bowbridge	620* 54A* 67	P, K K M
Box (Nailsworth)	620*	P, K
Bridgend (Stonehouse)	62 65	N J
Brimscombe	620* 54A* 67	P, K K M
Brookthorpe	62, 63	C
Bussage	67 64	M L
Cainscross	65 67	J A
Cambridge (Gloucs)	65	J
Cashes Green	67	A
Chalford (Gloucs)	54A*	K
Cheltenham	66	D
Cirencester	54A*	K
Coates (Gloucs)	54A*	K
Dudbridge (Sainsbury's)	62 65	N J
Dursley	65	J
Ebley	64	L
Edge	62, 63	C
Forest Green	63	N
Frampton Mansell	54A*	K

DESTINATION	BUS ROUTES	BUS STOP
Gloucester	62, 63 64 65	C L J
Horsley (Nailsworth)	40	O, M
King's Stanley	62	N
Leonard Stanley	62	N
Lightpill (Bath Road)	63	N
Lightpill (Chandos Road)	40	O, M
Middleyard	62	N
Minchinhampton	620* 40 63	P, K O, M N
Nailsworth	620*	P, K
Nymphsfield	65	J
Old Sodbury	620*	P, K
Paganhill	63	C
Painswick	67	A
Pitchcombe	66 62 66	D C D
Quedgeley	64 65	L J
Ryeford (Ebley Road)	64	L
Sapperton (Gloucs)	54A*	K
Selsley	65 62	J N

DESTINATION	BUS ROUTES	BUS STOP
Stonehouse	62 64 65	N L J
Stroud College	63 67	C A
Stroud General Hospital	8	K
Tetbury	620*	P, K
Tetbury Upton	620*	P, K
Uley	65	J
Uplands (Stroud)	8	K
Whiteshill	63	C
Whitminster	64	L
Woodchester	40 63	O, M N
Wotton-under-Edge	40	O, M

Notes

- PlusBus** destination, please see below for details
- Bus routes 8, 40 and 66 operate services on Mondays to Saturdays, only.
- Bus routes 62, 63, 64, 65 and 67 operate daily services.
- For bus times and days of operation please contact Traveline on www.traveline.info or call: 0871 200 22 33
- Please note that PlusBus tickets are only valid on services operated by Stagecoach West.
- Direct trains operate to this destination from this Station
- * Bus routes 54A and 620 operate limited daytime services on Mondays to Saturdays, only.
- AONB Cotswolds (AONB) www.cotswoldsaonb.org.uk

Taxis

Stroud station is served by a taxi rank or cab office. Check availability, and pre-book if necessary. Please consider using the following local operators: (Inclusion of this number doesn't represent any endorsement of the taxi firm)

The Original Stroud Taxi
01453 750 211

Wonky Wheels Taxis
01453 767 878

AAA Taxis Stroud
01453 767 777

Further information about all onward travel

Local Cycle Info	National Cycle Info	Bus Times	PlusBus
stroud.gov.uk For more information about cycle routes.	walkwheelcycletrust.org.uk	See timetable displays at bus stops. www.traveline.info 0871 200 22 33 calls cost 15p per minute plus your phone company's access charge	plusbus.info PlusBus is a discount price 'bus pass' that you buy with your train ticket. It gives you unlimited bus travel around your chosen town, on participating buses. Visit www.plusbus.info

National Rail Enquiries

Online	NRE App	Social Media	Alert Me	Contact Centre	PlusBike
nationalrail.co.uk	Free National Rail Enquiries app for iOS and Android	facebook.com/nationalrailenq @nationalrailenq	You can sign up to Alert Me messages on the National Rail Enquiries website where you can receive train and platform notifications directly to your smart phone. nationalrail.co.uk/alertme	03457 48 49 50 Calls cost no more than calls to geographic numbers (01 or 02) and may be recorded.	nationalrail.co.uk/plusbike For more information.



National Rail
Britain's train companies working together



This poster shows details of popular destinations and main, frequent bus routes. Additional services may run, so please check with Traveline or see posters at local bus stops. Whilst considerable care has been taken to ensure the information contained on this poster is correct and accurate, National Rail cannot accept responsibility for any loss or inconvenience caused by any errors or omissions, or for loss, damage, injury or inconvenience relating to the cancellation, alteration, delay or diversion of a service. For any feedback, please e-mail comments@onwardtravelposters.com

Scan this code with your mobile for full station information.