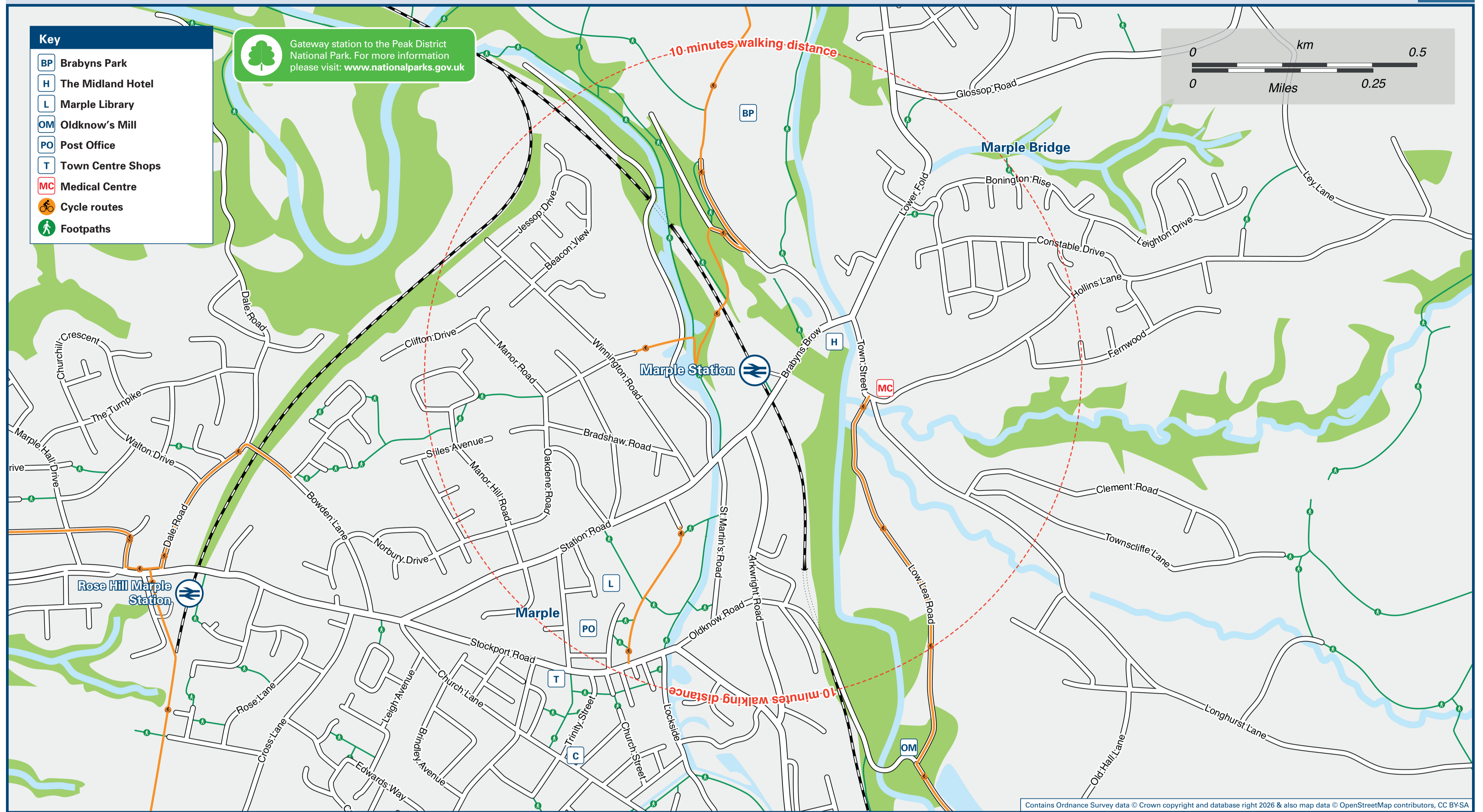




Marple Station

Onward Travel Information

Local area map



Buses



Rail replacement buses Pick Up / Drop Off at the bus stops on Brabyns Brow, at the end of the Station Approach Road.

Main destinations by bus

(Data correct at February 2026)

DESTINATION	BUS ROUTES	BUS STOP
Bosden Farm	385*	B
Bredbury	383	A
Charlesworth	394#	A
Chisworth	394#	A
Compstall	383	A
Gamesley	394#	A
Glossop	394#	A
Hawk Green	385*, 394#	B
Hazel Grove	394#	B
High Lane	394#	B
Lane Ends	394#	A
Mellor (Moor End Road)	385*	A
Offerton	384, 385*	B
Offerton Green	384, 385*	B
Romiley Railway Station	383	A
Rose Hill	384, 385*	B
Stepping Hill Hospital	394#	B
Stockport Interchange	383	A
	384, 385*	B

Notes

Bus routes 383 and 384 operate daily services, including evenings, Sundays and public holidays. For bus times and days of operation please contact Traveline on www.traveline.info or call: 0871 200 22 33

Direct trains operate to this destination from this station.

* Bus route 385 operates a daytime service on Mondays to Saturdays, only. No evenings or Sundays service.

Bus route 394 operates a limited daytime service on Mondays to Fridays, only. No evenings, Saturdays or Sundays service.

National Park Peak District National Park www.peakdistrict.gov.uk

Taxis

Marple station has no taxi rank or cab office. Advance bookings is essential, please consider using the following local operators: (Inclusion of this number doesn't represent any endorsement of the taxi firm)

Metro Taxis
0161 480 8000

Lynx Taxis
0161 480 5000

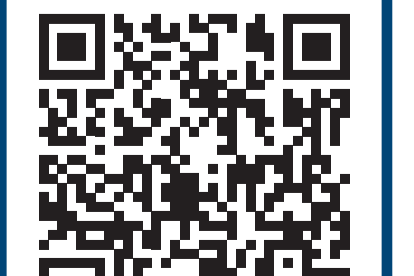
ASAPP Cars
0161 477 3666

Further information about all onward travel

Local Cycle Info stockport.gov.uk For more information about cycle routes.	National Cycle Info walkwheelcycletrust.org.uk	Bus Times See timetable displays at bus stops. www.traveline.info 0871 200 22 33 calls cost 13p per minute plus your phone company's access charge	PlusBus plusbus.info PlusBus is a discount price 'bus pass' that you buy with your train ticket. It gives you unlimited bus travel around your chosen town, on participating buses. Visit www.plusbus.info
---	--	---	---

National Rail Enquiries

Online nationalrail.co.uk	NRE App Free National Rail Enquiries app for iOS and Android	Social Media facebook.com/nationalrailenq @nationalrailenq	Alert Me You can sign up to Alert Me messages on the National Rail Enquiries website where you can receive train and platform notifications directly to your smart phone. nationalrail.co.uk/alertme	Contact Centre 03457 48 49 50 Calls cost no more than calls to geographic numbers (01 or 02) and may be recorded.	PlusBike nationalrail.co.uk/plusbike For more information.
---	--	---	---	--	--



This poster shows details of popular destinations and main, frequent bus routes. Additional services may run, so please check with Traveline or see posters at local bus stops. Whilst considerable care has been taken to ensure the information contained on this poster is correct and accurate, National Rail cannot accept responsibility for any loss or inconvenience caused by any errors or omissions, or for loss, damage, injury or inconvenience relating to the cancellation, alteration, delay or diversion of a service. For any feedback, please e-mail comments@onwardtravelposters.com

Scan this code with your mobile for full station information.