



Dorking Deepdene Station

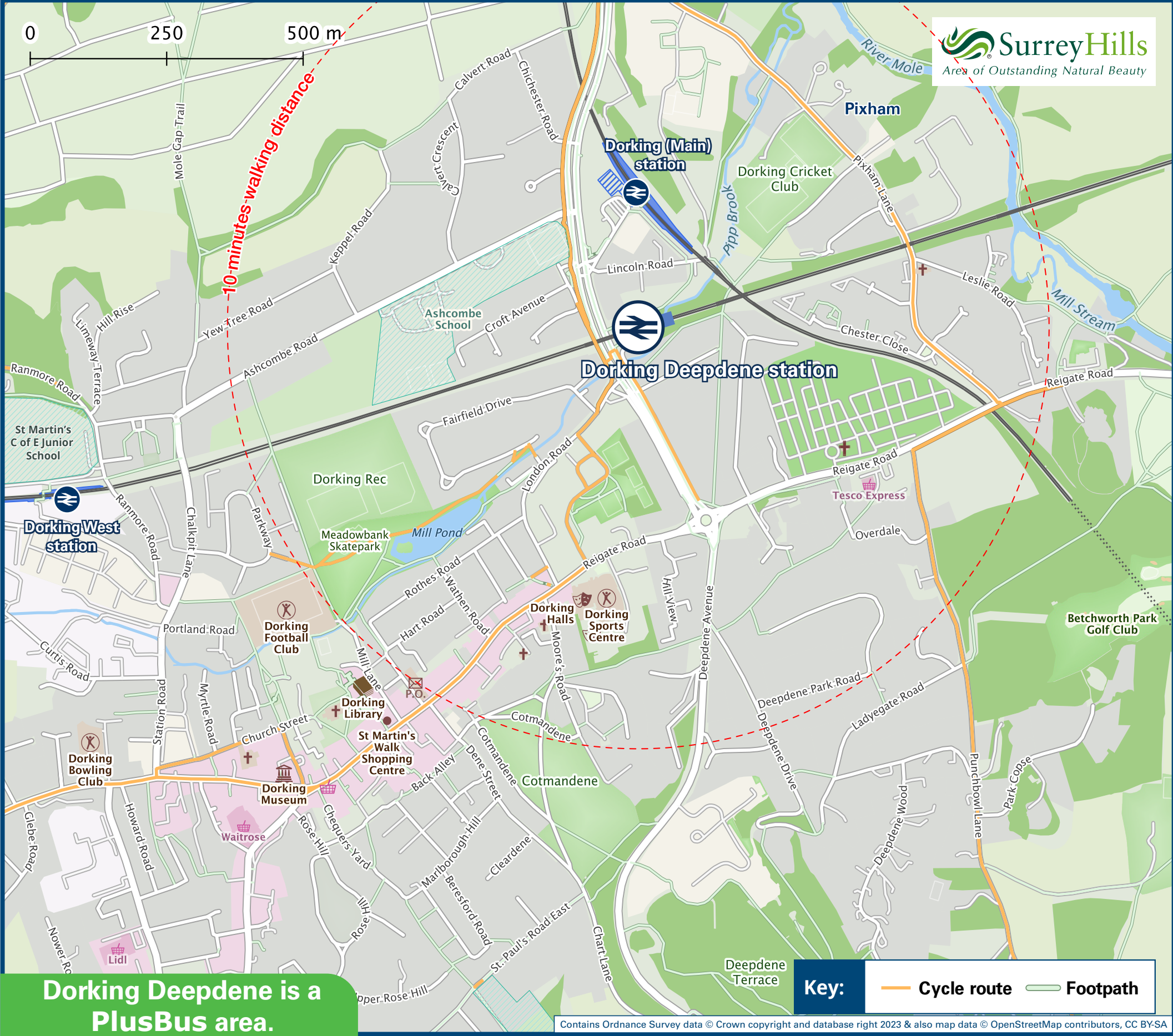
Onward Travel Information

Buses



Rail replacement buses depart from bus stops on the A24: From stop **A** to Guildford and Reading and from stop **E** to Redhill and Gatwick Airport.

Local area map



Dorking Deepdene is a PlusBus area.



PlusBus is a discount price 'bus pass' that you buy with your train ticket. It gives you unlimited bus travel around your chosen town, on participating buses. Visit www.plusbus.info

Main destinations by bus

(Data correct at January 2025)



DESTINATION	BUS ROUTES	BUS STOP
Abinger Common	22~	E
Abinger Hammer	22~, 32	E
Albury (for Silent Pool)	32	E
Ashtead	21*	A
Beare Green	93	E
	21*	B
Betchworth Village	32	E
Box Hill (Visitor Centre)	21*	A
Brockham	32	E
	21*	A
Buckland	32	E
Capel	93	E
Charlwood	22~	E
Chessington World of Adventures	465	A
Chilworth	32	E
	21*	B
Crawley	22~	E
Dorking Local on-demand area Zone	"Mole Valley Connect" #	A, B, E
Dorking Town Area -		
● Chart Downs	22~	E
● Goodwyns	93	E
● Holmwood Park	93	E
● Horsham Road (Tower Hill Road)	21*	B
	93	E
● Town Centre (High Street)	22~, 32, 93, 465	E
	21*	B

DESTINATION	BUS ROUTES	BUS STOP
Epsom	21*	A
Gatwick Airport	22~	E
Gomshall	32	E
Headley	21*	A
Headley Court	21*	A
Holmbury St Mary	22~	E
Holmwood	93	E
Hook	465	A
Horley	22~	E
Horsham	93	E
Kingsfold	93	E
Leatherhead (Via Box Hill)	21*	A
Leatherhead (Direct)	465	A
Leigh	22~	E
Mickleham	465	A
Newdigate	21*	B
	93	E
North Holmwood	21*	B
Pebblecombe	21*	A
Pixham	21*	A
Redhill	32	E
Reigate	32	E
Shalford	32	E
Shere	32	E
	93	E
South Holmwood	21*	B
	32	E
Strood Green		

DESTINATION	BUS ROUTES	BUS STOP
Surbiton Station	465	A
Sutton Abinger	22~	E
Warnham	93	E
Westcott	22~, 32	E
Westhumble (for Box Hill)	465	A
Wotton	22~, 32	E

Notes

Bus routes 32, 93 and 465 operate daily.
For bus times please see bus stop timetables or contact Traveline www.traveline.info (or call: 0871 200 22 33)

⚡ Direct trains operate from Dorking Deepdene station to this destination.

⚡ Direct trains operate from Dorking (Main) station to this destination.

⚡ For connecting train services to this destination, please change trains at Redhill.

🚶 Dorking town centre is a 10 minutes walk from this station via London Road, see maps.

"Mole Valley Connect" is an On Demand bus service available in the Mole Valley area around Dorking. To register and to book a journey download the "Surrey Connect" mobile App available from Google Play (Android) or Apple Store App (iPhone) or call 0300 123 7751, booking line is open Monday to Friday 9am to 5pm. "Mole Valley Connect" operates Monday to Friday 7am to 7pm and Saturday 8am to 6pm, this service is available to anyone.

* Bus route 21 operates a limited daytime service on Mondays to Saturdays, only. No Evening or Sunday service.

~ Bus route 22 operates a limited daytime service on Mondays to Fridays only. No Evening, Saturday or Sunday service.

AONB Surrey Hills (AONB) www.surreyhill.org

● **PlusBus** destination, please see below for details.

Taxis

Dorking Deepdene has no taxi rank or cab office. Advance booking is essential, please consider using the following local operators: (Inclusion of this number doesn't represent any endorsement of the taxi firm)

Dorking Taxis
01306 885 533

A-2-B Dorking Taxis
01306 884 411

A-Star Taxis
01306 882 299

Further information about all onward travel

Local Cycle Info	National Cycle Info	Bus Times	NextBuses	PlusBus
mole-valley.gov.uk For more information about cycle routes.	sustrans.org.uk Sustrans is the UK's leading sustainable transport charity.	See timetable displays at bus stops. www.traveline.info 0871 200 22 33 calls cost 10p per minute plus your phone company's access charge	 Find the bus times for your stop. Search for a bus stop by entering a postcode, street & town or a stop name & town.	 plusbus.info A discount price 'bus pass' that you buy with your train ticket. It gives you unlimited bus travel around your chosen town, on participating buses.

National Rail Enquiries

Online	NRE App	Social Media	Alert Me	Contact Centre	PlusBike
nationalrail.co.uk	Free National Rail Enquiries app for iOS and Android	facebook.com/nationalrailenq @nationalrailenq	You can sign up to Alert Me messages on the National Rail Enquiries website where you can receive train and platform notifications directly to your smart phone. nationalrail.co.uk/alertme	03457 48 49 50 Calls cost no more than calls to geographic numbers (01 or 02) and may be recorded.	nationalrail.co.uk/plusbike For more information.



National Rail
Britain's train companies working together



This poster shows details of popular destinations and main, frequent bus routes. Additional services may run, so please check with Traveline or see posters at local bus stops. Whilst considerable care has been taken to ensure the information contained on this poster is correct and accurate, National Rail cannot accept responsibility for any loss or inconvenience caused by any errors or omissions, or for loss, damage, injury or inconvenience relating to the cancellation, alteration, delay or diversion of a service. For any feedback, please e-mail comments@onwardtravelposters.com

Scan this code with your mobile for full station information.