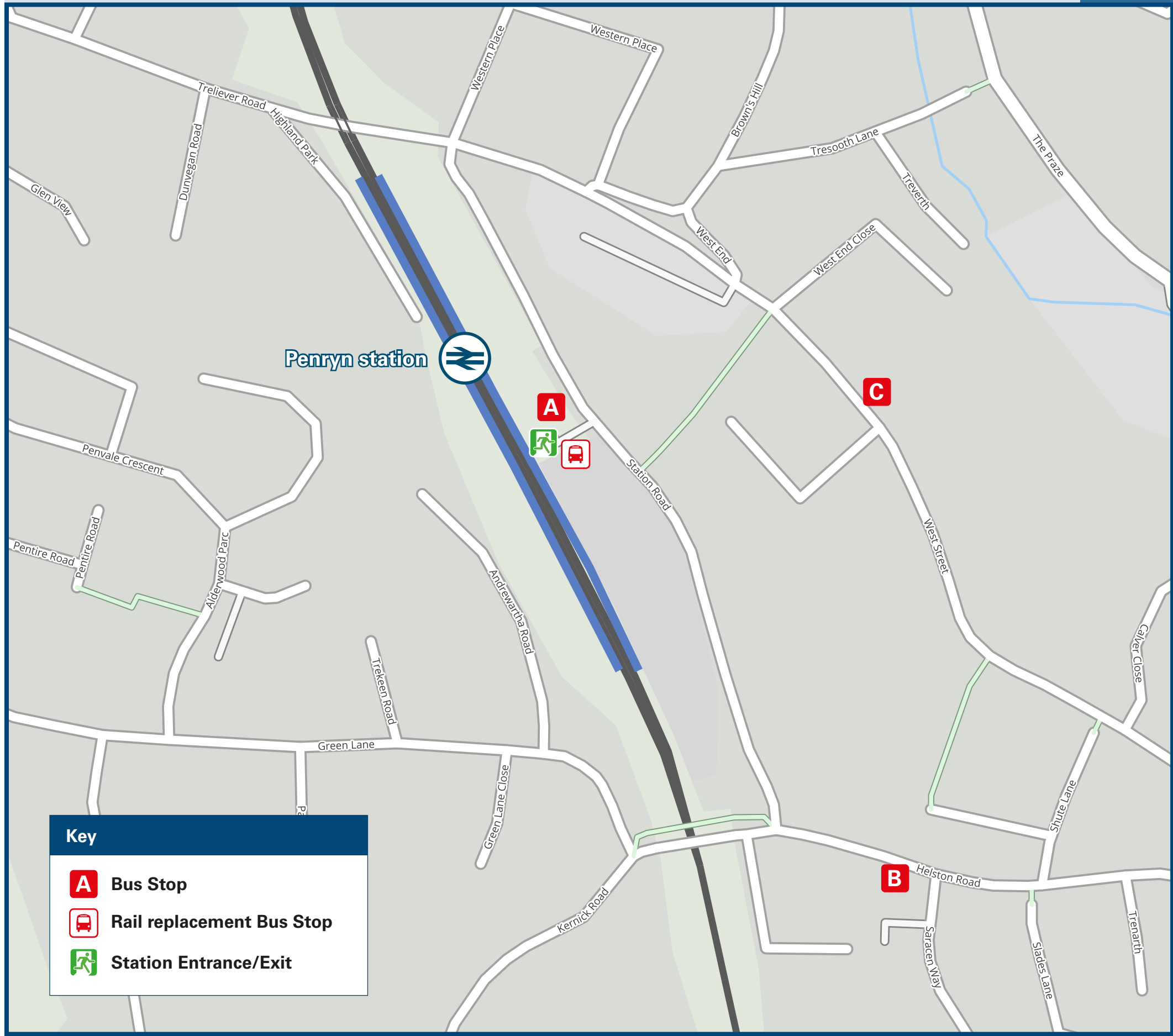




# Penryn Station

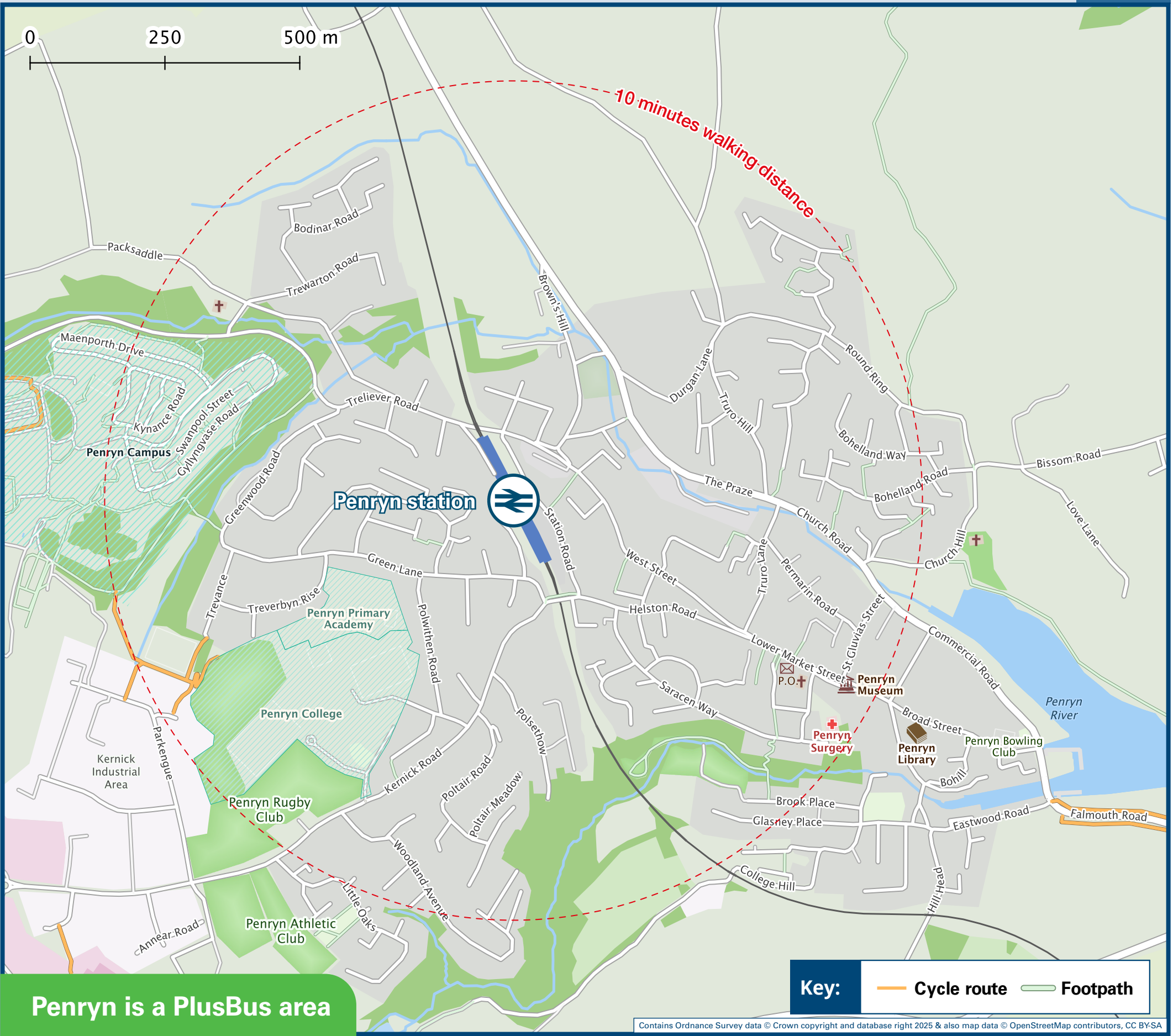
## Onward Travel Information

### Buses



Rail replacement buses/coaches will depart from the bus stops at the station entrance.

### Local area map



Penryn is a PlusBus area



Add **PlusBus** to your train ticket—now available on eTicket from leading rail ticketing apps—for unlimited bus travel in the **PlusBus** zone in your destination town or city. Visit [www.plusbus.info](http://www.plusbus.info)

### Main destinations by bus

(Data correct at January 2026)



DESTINATION	BUS ROUTES	BUS STOP
Bissom	69	A
Camborne	42#	B
Comford (for Gwennap)	33	A
Devoran	33	A
Falmouth	42# 3, 32, 33, 42#, 69, 69A	A C
Flushing	69	A
Helston	3	A
Lanner	33	A
Long Downs	3, 42#	A
Mabe Burnthouse	42#, 69A	A

DESTINATION	BUS ROUTES	BUS STOP
Mylor Bridge	69	A
Penryn Campus (University of Falmouth, Tremough Campus)	10 - 15 minutes walk from this station (see Local area map) 3, 32, 33, 69A	A C
Perranarworthal	32	A
Playing Place	32	A
Ponsanooth	33	A
Ponsharden (for Falmouth Marina, Park & Float)	3, 32, 33, 69, 69A	C
Porthleven	3	A
Rame	3, 42#	A
Redruth	33	A
St Gluvias	69	A

DESTINATION	BUS ROUTES	BUS STOP
Treluswell (for Roskrow Campsite)	32, 33	A
Trewennack	3	A
Truro	32	A

#### Notes

- PlusBus destination, please see below for details.
- Bus route 32, 69 & 69A operate services on Mondays to Saturdays, only. No Sunday services.
- Bus routes 3 & 33 operate daily services.
- For bus times and days of operation please contact Traveline on [www.traveline.info](http://www.traveline.info) or call: 0871 200 22 33
- Plusbus tickets are valid within the Falmouth Plusbus zone (including Penryn)
- Direct trains operate from this Station to this destination.
- For connecting train services to this destination, please change trains at Truro.
- # Bus route 42 operates a limited daytime service on Mondays to Saturdays, only. No evenings or Sundays service.



### Taxis

This station has no taxi rank or cab office. Advance booking is essential, please consider using the following local operators: (Inclusion of this number doesn't represent any endorsement of the taxi firm)

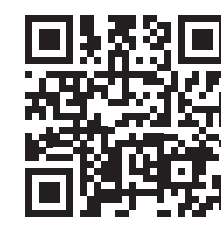
Abacus & Falmouth Taxis  
01326 212 141

Falmouth and Penryn Radio  
01326 313 131

Treble One Taxis  
01326 210 111

### Further information about all onward travel

Local Cycle Info	National Cycle Info	Bus Times	PlusBus
<a href="http://cornwall.gov.uk">cornwall.gov.uk</a> For more information about cycle routes.	<a href="http://walkwheelcycletrust.org.uk">walkwheelcycletrust.org.uk</a>	See timetable displays at bus stops.  <a href="http://www.traveline.info">www.traveline.info</a> 0871 200 22 33 calls cost 12p per minute plus your phone company's access charge	 <a href="http://plusbus.info">plusbus.info</a> PlusBus is a discount price 'bus pass' that you buy with your train ticket. It gives you unlimited bus travel around your chosen town, on participating buses. Visit <a href="http://www.plusbus.info">www.plusbus.info</a>



### National Rail Enquiries

Online	NRE App	Social Media	Alert Me	Contact Centre	PlusBike
<a href="http://nationalrail.co.uk">nationalrail.co.uk</a>	Free National Rail Enquiries app for iOS and Android	<a href="https://facebook.com/nationalrailenq">facebook.com/nationalrailenq</a> @nationalrailenq	You can sign up to Alert Me messages on the National Rail Enquiries website where you can receive train and platform notifications directly to your smart phone. <a href="http://nationalrail.co.uk/alertme">nationalrail.co.uk/alertme</a>	<b>03457 48 49 50</b> Calls cost no more than calls to geographic numbers (01 or 02) and may be recorded.	<a href="http://nationalrail.co.uk/plusbike">nationalrail.co.uk/plusbike</a> For more information.



**National Rail**  
Britain's train companies working together



This poster shows details of popular destinations and main, frequent bus routes. Additional services may run, so please check with Traveline or see posters at local bus stops. Whilst considerable care has been taken to ensure the information contained on this poster is correct and accurate, National Rail cannot accept responsibility for any loss or inconvenience caused by any errors or omissions, or for loss, damage, injury or inconvenience relating to the cancellation, alteration, delay or diversion of a service. For any feedback, please e-mail [comments@onwardtravelposters.com](mailto:comments@onwardtravelposters.com)

Scan this code with your mobile for full station information.