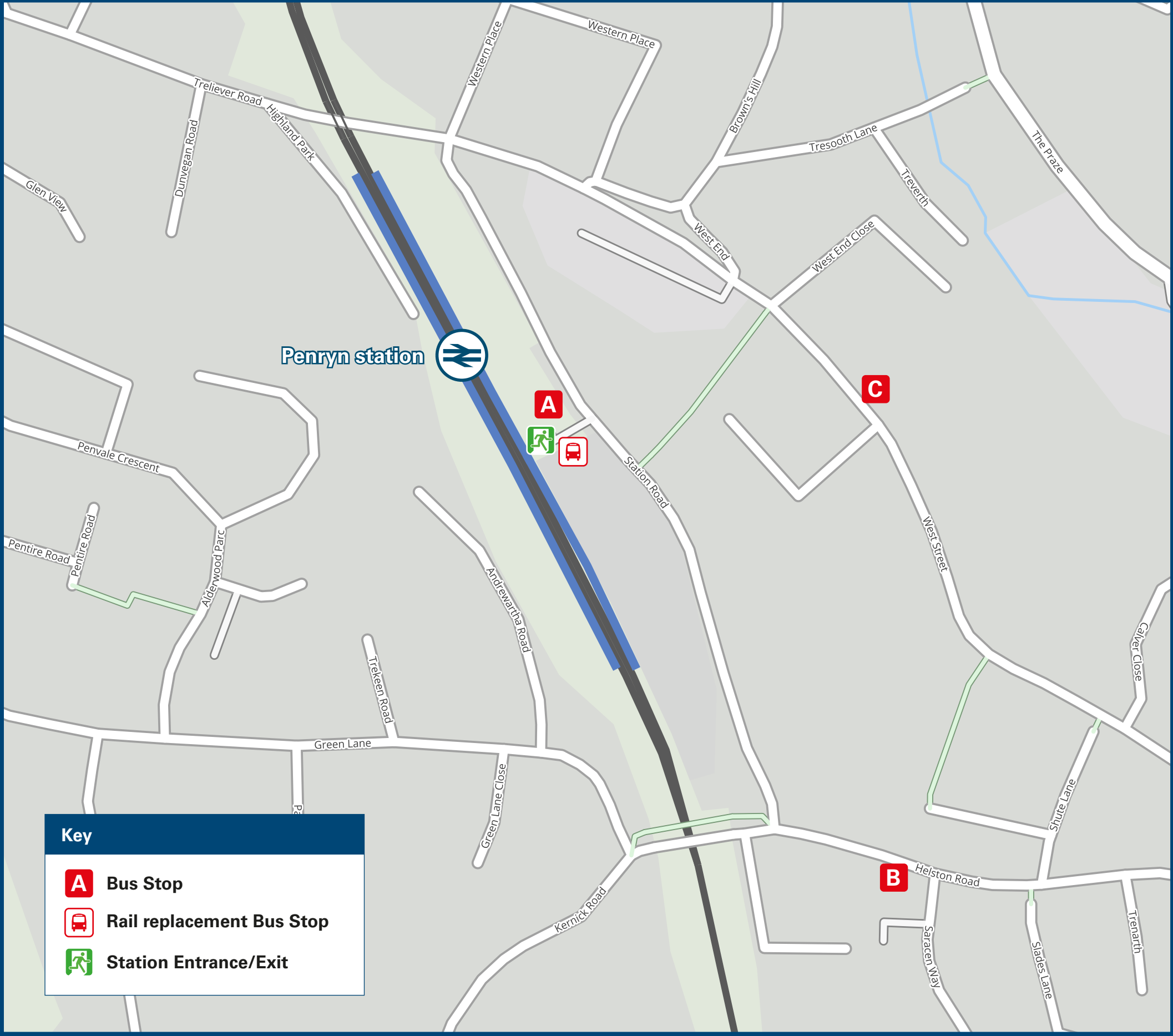




# Penryn Station

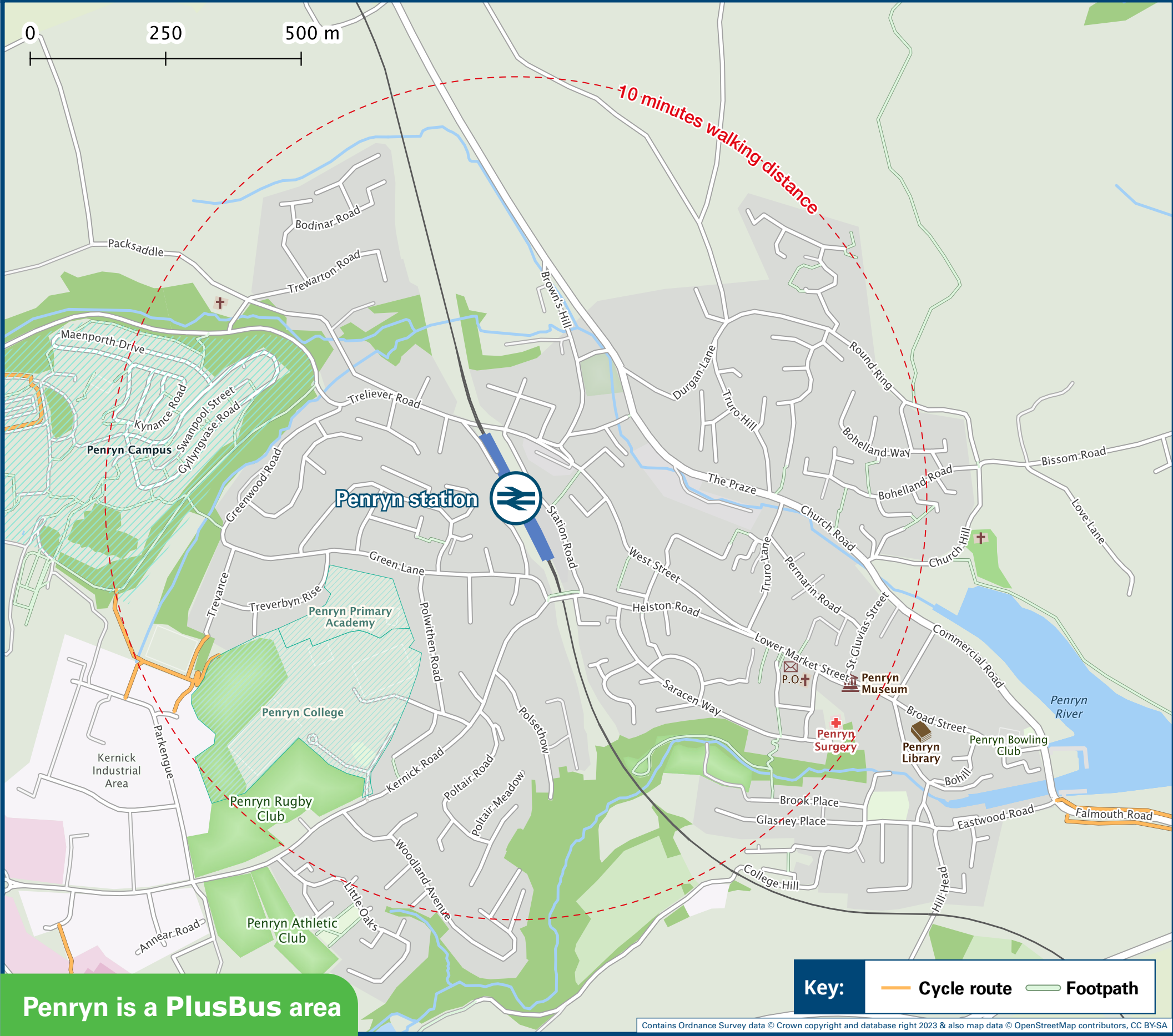
## Onward Travel Information

### Buses



Rail replacement buses/coaches will depart from the front of the station

### Local area map



**PlusBus** is a discount price 'bus pass' that you buy with your train ticket. It gives you unlimited bus travel around your chosen town, on participating buses. Visit [www.plusbus.info](http://www.plusbus.info)

### Main destinations by bus

(Data correct at November 2023)



DESTINATION	BUS ROUTES	BUS STOP
Bissom	69	A
Camborne	42#	B
Carnon Downs	U1, U1A	A
Comfort (for Gwennap)	U2	A
Devoran	U1, U1A	A
Falmouth	42#, 69, 69A, U1, U1A, U2, U4	C
Flushing	69	A
Helston	U4	A
Lanner	U2	A
Long Downs	U4	A
Mabe Burnthouse	69A	A

DESTINATION	BUS ROUTES	BUS STOP
Mylor Bridge	69	A
Penryn Campus (University of Falmouth, Tremough Campus)	10 - 15 minutes walk from this station (see Local area map) 69A, U1, U1A, U2, U4	A
Perranarworthal	U1, U1A	A
Playing Place	U1, U1A	A
Ponsanooth	U2	A
Ponsharden (for Falmouth Marina, Park & Float)	69, 69A, U1, U1A, U2, U4	C
Porthleven	U4	A
Rame	U4	A
Redruth	U2	A
St Gluvias	69	A

DESTINATION	BUS ROUTES	BUS STOP
Treluswell (for Roskrow Campsite)	U1, U1A, U2	A
Trewennack	U4	A
Truro	U1, U1A	A

**Notes**

- PlusBus destination, please see below for details. Bus route 69 & 69A operates Mondays to Saturdays services, only. Bus routes U1, U1A, U2 & U4 operate daily services. For bus times and days of operation please see bus stop timetables or contact Traveline. PlusBus tickets are valid within the Falmouth PlusBus zone (including Penryn).
- Direct trains operate from this Station to this destination.
- For connecting train services to this destination, please change trains at Truro.
- Bus route 42 operates a limited service, Mondays to Saturdays only.

**Transport for Cornwall**  
Karyans rag Kernow

### Taxis

This station has no taxi rank or cab office. Advance booking is essential, please consider using the following local operators: (Inclusion of this number doesn't represent any endorsement of the taxi firm)

**Abacus & Falmouth Taxis**  
01326 212 141

**Falmouth and Penryn Radio**  
01326 313 131

**A2B Taxis Falmouth**  
01326 317 898

### Further information about all onward travel

<b>Local Cycle Info</b> <a href="http://cornwall.gov.uk">cornwall.gov.uk</a> For more information about cycle routes.	<b>National Cycle Info</b> <a href="http://sustrans.org.uk">sustrans.org.uk</a> Sustrans is the UK's leading sustainable transport charity.	<b>Bus Times</b> See timetable displays at bus stops.  <a href="http://www.traveline.info">www.traveline.info</a> 0871 200 22 33 calls cost 12p per minute plus your phone company's access charge	<b>NextBuses</b> <b>Find the bus times for your stop.</b> Search for a bus stop by entering a postcode, street & town or a stop name & town.	<b>PlusBus</b> <b>plusbus.info</b> A discount price 'bus pass' that you buy with your train ticket. It gives you unlimited bus travel around your chosen town, on participating buses.
---	---	---	--	--

### National Rail Enquiries

<b>Online</b> <a href="http://nationalrail.co.uk">nationalrail.co.uk</a>	<b>NRE App</b> Free National Rail Enquiries app for iOS and Android	<b>Social Media</b> <a href="https://facebook.com/nationalrailenq">facebook.com/nationalrailenq</a> @nationalrailenq	<b>Alert Me</b> You can sign up to Alert Me messages on the National Rail Enquiries website where you can receive train and platform notifications directly to your smart phone. <a href="http://nationalrail.co.uk/alertme">nationalrail.co.uk/alertme</a>	<b>Contact Centre</b> <b>03457 48 49 50</b> Calls cost no more than calls to geographic numbers (01 or 02) and may be recorded.	<b>PlusBike</b> <a href="http://nationalrail.co.uk/plusbike">nationalrail.co.uk/plusbike</a> For more information.
---	--	--	---	---	--



**National Rail**  
Britain's train companies working together



This poster shows details of popular destinations and main, frequent bus routes. Additional services may run, so please check with Traveline or see posters at local bus stops. Whilst considerable care has been taken to ensure the information contained on this poster is correct and accurate, National Rail cannot accept responsibility for any loss or inconvenience caused by any errors or omissions, or for loss, damage, injury or inconvenience relating to the cancellation, alteration, delay or diversion of a service. For any feedback, please e-mail [comments@onwardtravelposters.com](mailto:comments@onwardtravelposters.com)

Scan this code with your mobile for full station information.