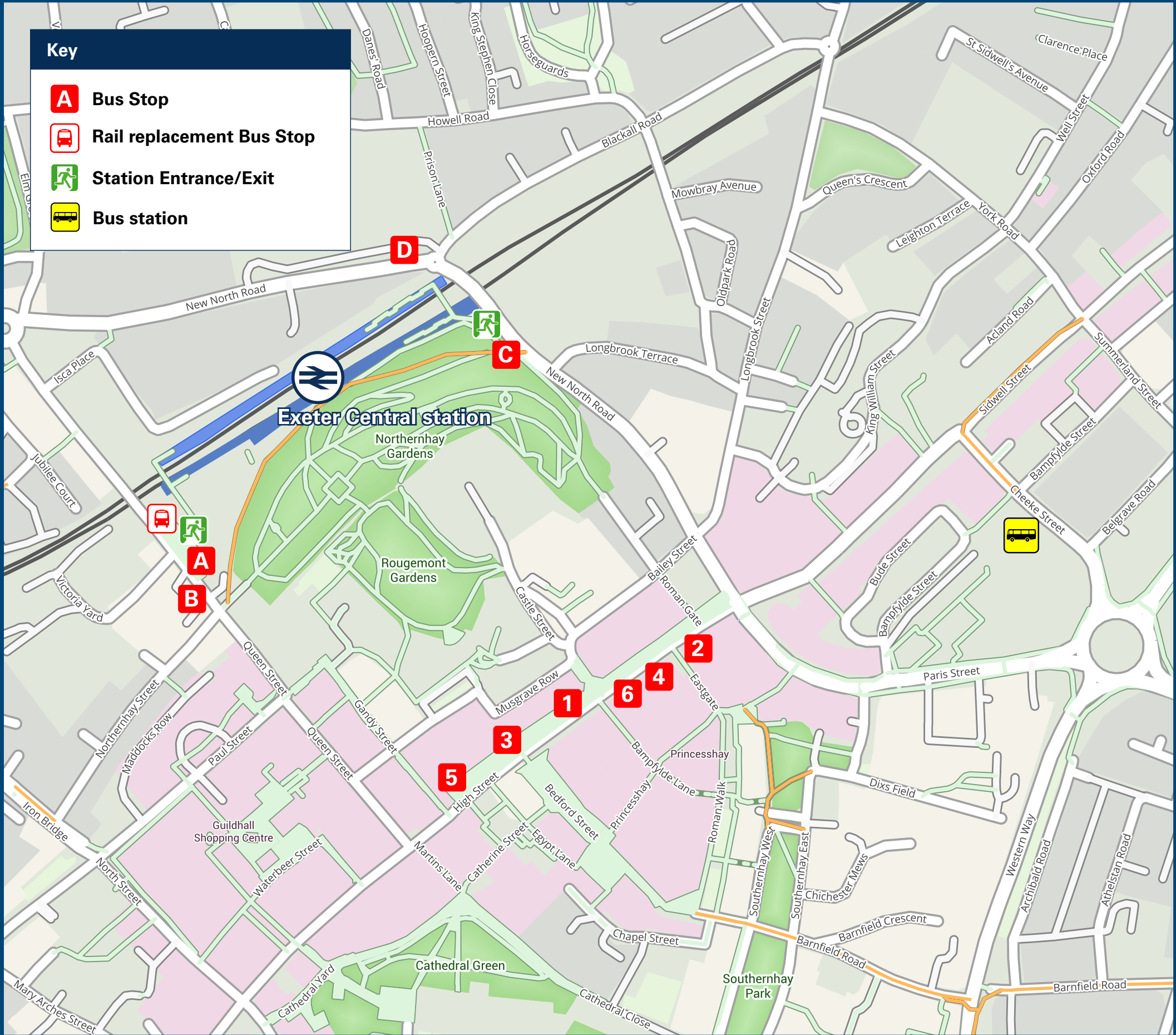




Exeter Central Station

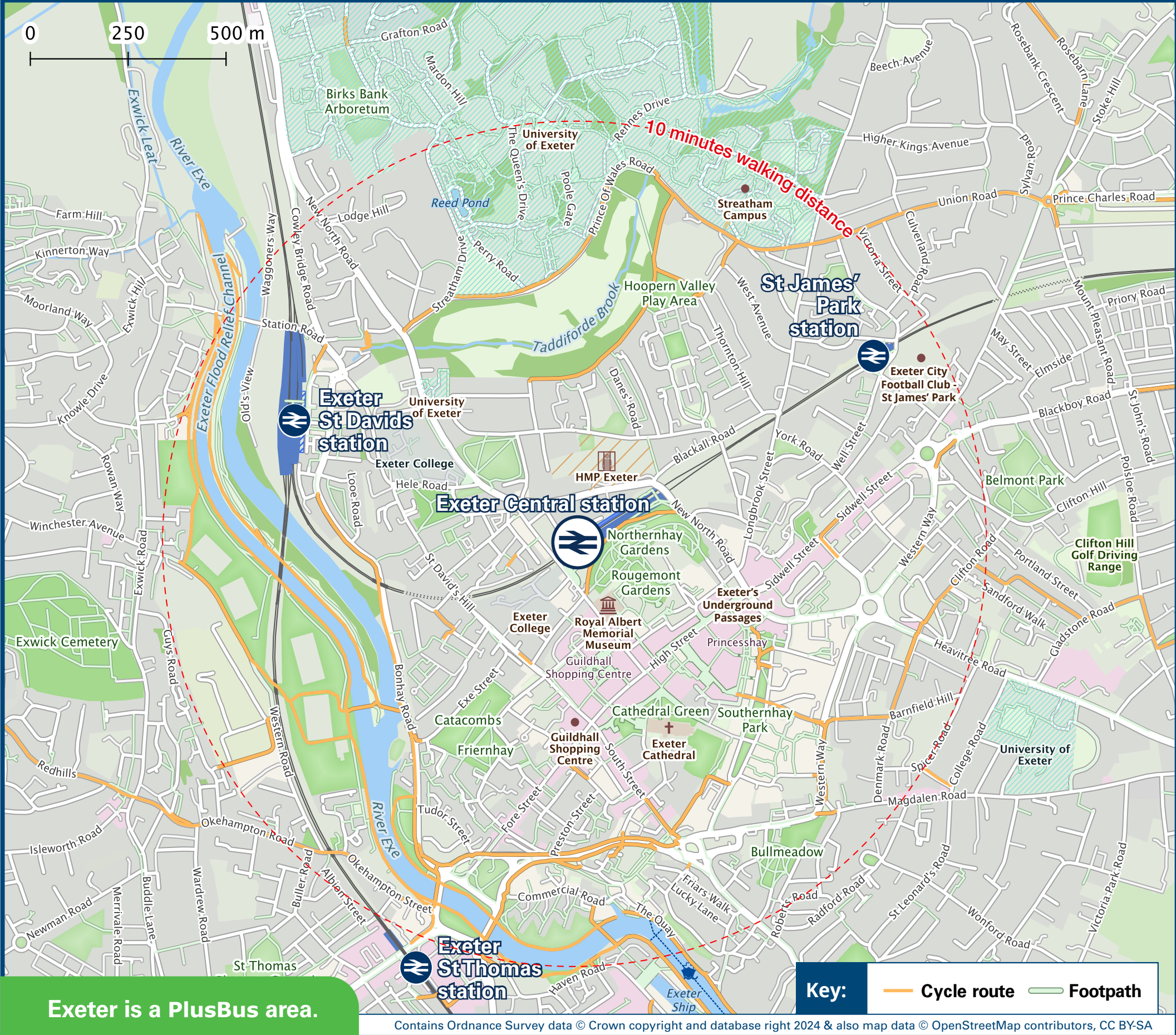
Onward Travel Information

Buses



Rail replacement buses/coaches will depart from the front of the station on Queen Street.

Local area map



PlusBus is a discount price 'bus pass' that you buy with your train ticket. It gives you unlimited bus travel around your chosen town, on participating buses. Visit www.plusbus.info

Main destinations by bus

(Data correct at January 2025)



DESTINATION	BUS ROUTES	BUS STOP
Ashburton	38*	Bus Station
Bickleigh (for Devon Railway Centre)	55, 355	
Bovey Tracey	39	Bus Station
Bow	5A, 5B	
Bradninch	1	Bus Station
Bridford	360*	High Street Stop
Broadclyst	1, 1A	Bus Station
Buckfastleigh	38*	Bus Station
Chagford	173*	High Street Stop
Cheriton Cross	173*	High Street Stop
Christow	360*	High Street Stop
Chudleigh	39	Bus Station
Clyst Honiton	4, 4A	
Clyst St Mary	44, 44A	Bus Station
Cowley Bridge	9, 9A, 58*	Bus Station
Cranbrook	5, 5A, 5B, 5C, 55	
Crediton	4	
Crediton	5, 5A, 5C*, 369*	
Crockernwell	173*	High Street Stop
Cullompton	1, 1A	Bus Station
Drewsteignton (for Castle Drogo)	173*	High Street Stop
Exeter City area -		
- Alphington	A	High Street Stop
- Beacon Heath	F1, F2, P	High Street Stop
- City Centre (Bus Station)	10 minutes walk from this station or take bus H or UNI from Stop	
- City Centre (High Street)	5 minutes walk from this station or take bus H or UNI from Stop	
- Countess Wear	2, 7, 39, 57	High Street Stop
- Cowley Bridge	5, 5A, 5B, 5C*, 55, 355, 369*	
- Digby (for Retail Park)	H	High Street Stop
- Exeter Business Park	I	High Street Stop
- Exeter Sports Arena	4, 4A	
- Exwick	F2	High Street Stop
- Exwick	E	High Street Stop
- Heavitree	4, 4A	
- Heavitree	C	High Street Stop
- Heavitree	R	High Street Stop
- Marsh Barton (for Exeter Retail Park)	B	High Street Stop

DESTINATION	BUS ROUTES	BUS STOP
- Marsh Barton (Park & Ride)	C	High Street Stop
- Newcourt	7, 38*, 39	Bus Station
- Newcourt	I, J	High Street Stop
- Pennsylvania	K	High Street Stop
- Pinhoe	P	High Street Stop
- Polsoe Bridge	1, 1A	High Street Stop
- Redhills	J	High Street Stop
- Royal Devon & Exeter Hospital	173*	High Street Stop
- Sowton (for Park & Ride)	E, P	High Street Stop
- St Davids	H	
- St Leonards (for County Hall)	4, 4A, 355	
- St Thomas	I, S	High Street Stop
- Stoke Hill	359*	
- Summerway (Whipton)	173*, 360*	High Street Stop
- University of Exeter (St Lukes Campus)	A, E, P	High Street Stop
- Whipton	K	
- Woford	P	High Street Stop
- Woford	F1, F2	High Street Stop
- Woford	F2	High Street Stop
- Woford	4, 4A	
- Woford	B	High Street Stop
- Woford	J	High Street Stop
- Woford	1, 1A	Bus Station
- Woford	H	
- Woford	I, S	High Street Stop
- Woford	R	High Street Stop
- Woford	4A	
- Woford	B	High Street Stop
- Woford	2	Bus Station
- Woford	5A	
- Woford	39	Bus Station
- Woford	360*	High Street Stop
- Woford	7	Bus Station
- Woford	2	Bus Station
- Woford	2, 7	Bus Station
- Woford	369*	
- Woford	359*	
- Woford	173*	High Street Stop

DESTINATION	BUS ROUTES	BUS STOP
Nadderwater	173*	High Street Stop
Newton Abbot	7, 39	Bus Station
Newton Poppleford	9, 9A	Bus Station
Newton St Cyres	5, 5A, 5B, 5C*, 369*	
North Tawton	5A, 5B	
Okehampton	5A	
Okehampton	6A	Bus Station
Sampford Courtenay	5A	
Seaton	9A, X30	Bus Station
Sidford	9, 9A	Bus Station
Sidmouth	9, 9A	Bus Station
Silverton	55, 355	
Stoke Canon	55, 355	
Tedburn St Mary	173*	High Street Stop
Thorverton	6A	Bus Station
Tiverton	355	
Tiverton	55, 355	
Willand	1, 1A	Bus Station
Winkleigh	1, 1A	Bus Station
Winkleigh	5B	Bus Station
Woodbury	58*, 58A	Bus Station
Woodbury Salterton	58*	Bus Station

Notes

- PlusBus** destination, please see below for details.
- PlusBus** tickets are valid within the Exeter Plusbus zone on Stagecoach and Country Buses only.
- PlusBus** tickets are not valid within the Exeter **PlusBus** zone on bus route 369
- Bus routes 1, 2, 4, 4A, 5, 7, 9, 9A, 39, 44A, 55, 57, A, B, E, I, J, P, R and S operate daily.
- Bus routes 1A, 5A, 5B, 5C, 44, 355, C, F1, F2, H and K operate Mondays to Saturdays only.
- Direct trains operate to this destination from this station.
- Change here for connecting National Rail services.
- For the Dartmoor Railway
- * Bus routes 38, 58, 173, 359, 360 and 369 operate limited Mondays to Saturdays services, only.

Taxis

Exeter Central station has no taxi rank or cab office. Advance booking is essential, please consider using the following local operators: (Inclusion of this number doesn't represent any endorsement of the taxi firm)

Need a cab taxis
01392 555 555

AppleTaxis
01392 666 666

I taxi
01392 696 970

Further information about all onward travel

Local Cycle Info	National Cycle Info	Bus Times	NextBuses	PlusBus
exeter.gov.uk For more information about cycle routes.	sustrans.org.uk Sustrans is the UK's leading sustainable transport charity.	See timetable displays at bus stops. www.traveline.info 0871 200 22 33 calls cost 10p per minute plus your phone company's access charge	www.nextbuses.com Find the bus times for your stop. Search for a bus stop by entering a postcode, street & town or a stop name & town.	plusbus.info A discount price 'bus pass' that you buy with your train ticket. It gives you unlimited bus travel around your chosen town, on participating buses.

National Rail Enquiries

Online	NRE App	Social Media	Alert Me	Contact Centre	PlusBike
nationalrail.co.uk	Free National Rail Enquiries app for iOS and Android	facebook.com/nationalrailenq @nationalrailenq	You can sign up to Alert Me messages on the National Rail Enquiries website where you can receive train and platform notifications directly to your smart phone. nationalrail.co.uk/alertme	03457 48 49 50 Calls cost no more than calls to geographic numbers (01 or 02) and may be recorded.	nationalrail.co.uk/plusbike For more information.



National Rail
Britain's train companies working together



This poster shows details of popular destinations and main, frequent bus routes. Additional services may run, so please check with Traveline or see posters at local bus stops. Whilst considerable care has been taken to ensure the information contained on this poster is correct and accurate, National Rail cannot accept responsibility for any loss or inconvenience caused by any errors or omissions, or for loss, damage, injury or inconvenience relating to the cancellation, alteration, delay or diversion of a service. For any feedback, please e-mail comments@onwardtravelposters.com

Scan this code with your mobile for full station information.