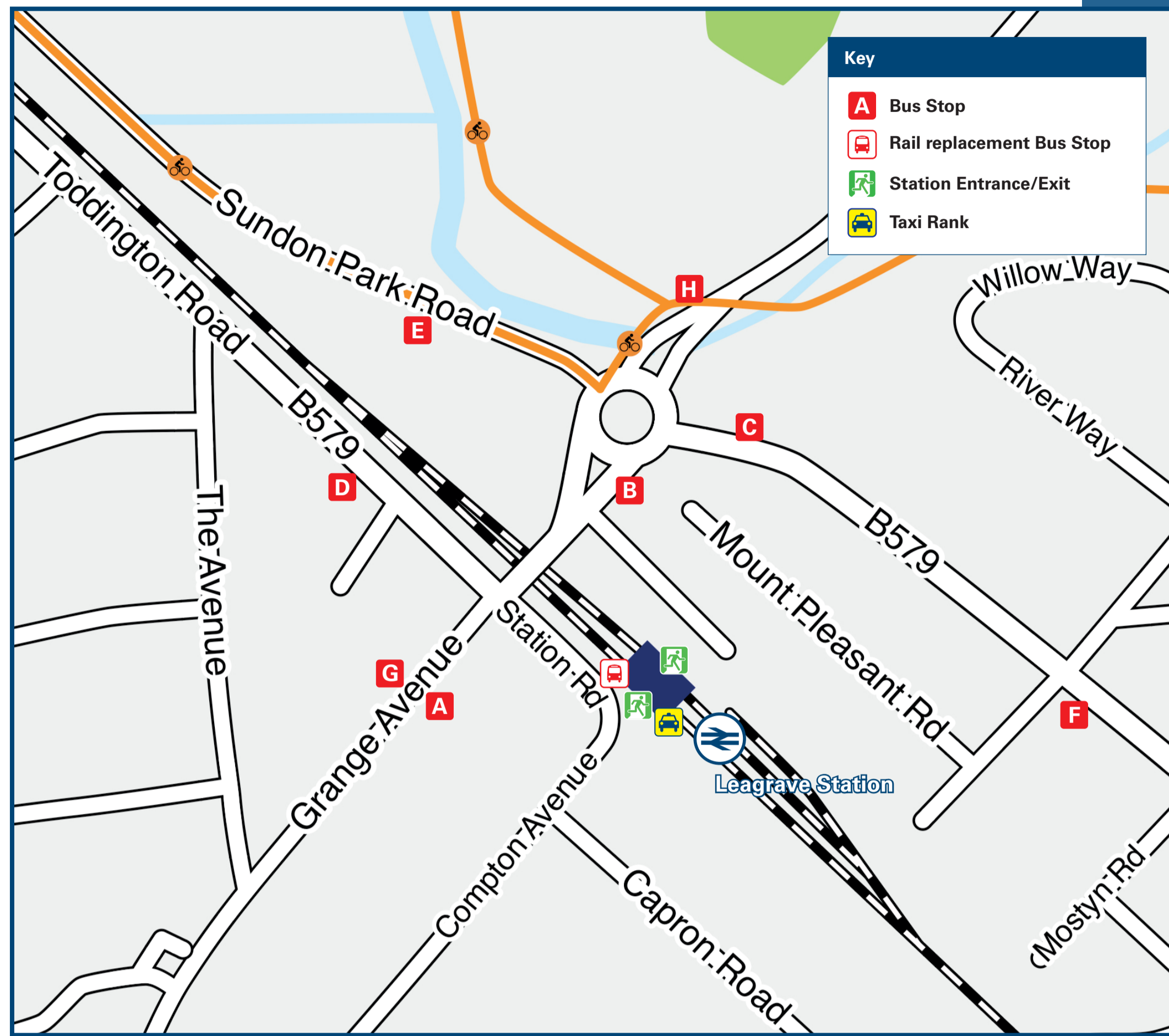




# Leagrave Station

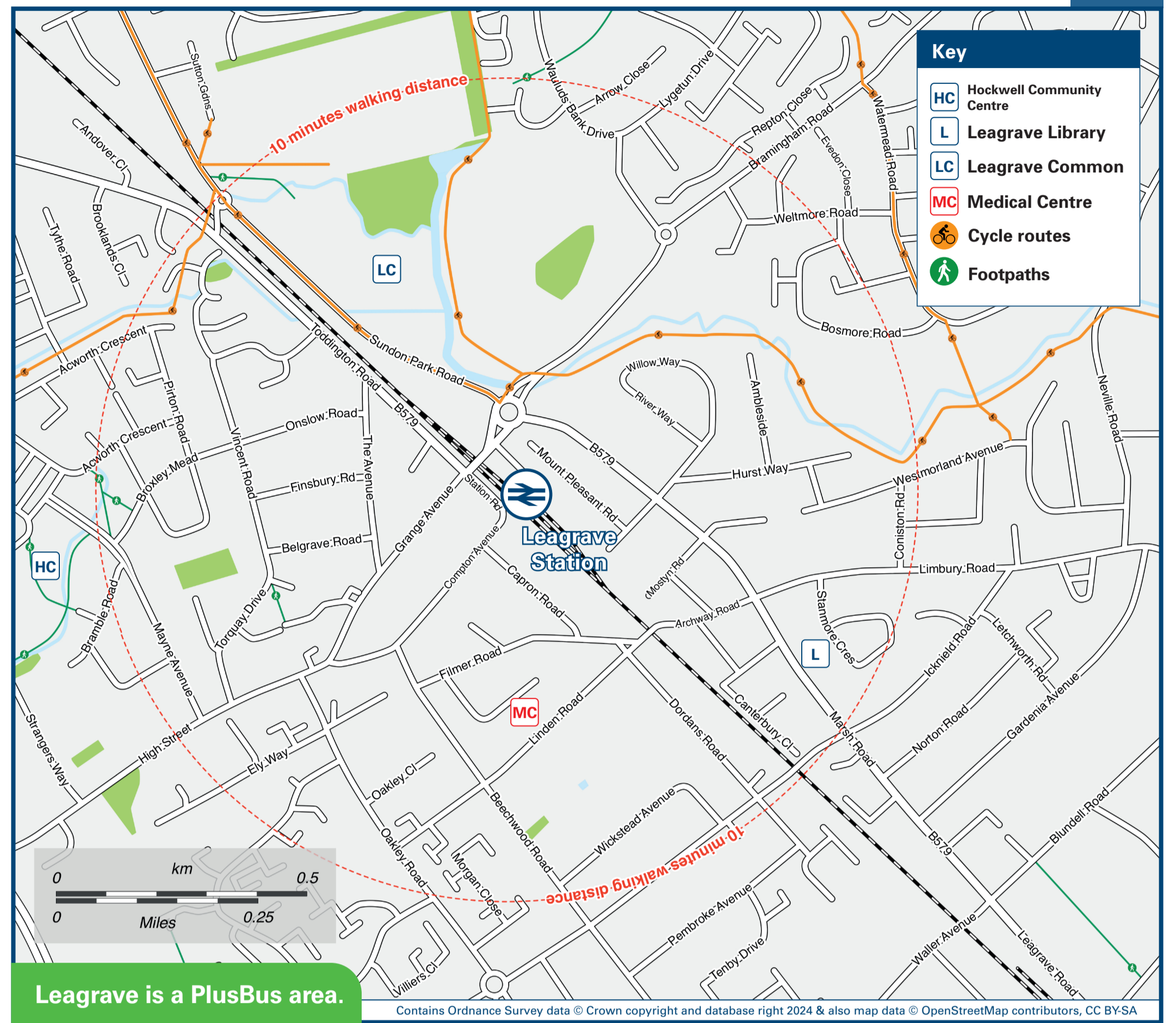
# Onward Travel Information

## Buses and Taxis



Rail Replacement buses depart from outside of the station entrance.

## Local area map



Leagrave is a PlusBus area.

**PlusBus** is a discount price 'bus pass' that you buy with your train ticket. It gives you unlimited bus travel around your chosen town, on participating buses. Visit [www.plusbus.info](http://www.plusbus.info)

## Main destinations by bus

(Data correct at July 2024)

DESTINATION	BUS ROUTES	BUS STOP
Bamfield Avenue (For Barnfield College)	24	D, G
Biscot (Biscot Road)	23	C
Biscot (Leagrave Road)	27, 28	C
Bramingham Park	24	D, G
Bury Park	27, 28	C
Bushmead	24	D, G
Hockwell Ring	24	A
Lewsey (Leagrave High Street)	28	B, D
	24	A

DESTINATION	BUS ROUTES	BUS STOP
Limbury Meads	27	F, H
Linmere	28, 28B*	B, D
Luton & Dunstable Hospital	24	A
Luton (Town Centre)	23, 27, 28	C
Marsh Farm	24	D, G
	27	F, H
Panattoni Park	28, 28B*	B, D
Saints	23, 27, 28	C

DESTINATION	BUS ROUTES	BUS STOP
Sundon Park	23	E, F
Tophill	24	D, G
Warden Hill Road (Barton Road)	28, 28B*	B, D
	24	D, G

**Notes**

- PlusBus destination, please see below for details.
- Bus route 28 operates on Mondays to Saturdays only. No service on Sundays or Public Holidays.
- Bus routes 23, 24 and 27 operate daily services, Mondays to Sundays.
- PlusBus tickets are valid only within the Luton Plusbus zone (including Leagrave) on Arriva (not Green Line service 755 or 757), Stagecoach, Centrebus, Uno, Grant Palmer (Busway routes C & CX only).
- Direct trains operate to this destination from this station.
- \* Bus route 28B operates at peak hours, Mondays to Fridays, only.

**Taxis** Leagrave station is served by a taxi rank or a cab office. Check availability before travelling, and pre-book if necessary. Please consider the following local operators: (Inclusion of this number doesn't represent any endorsement of the taxi firm)

**Spearhead**  
01582 505 050

**Tiger Cars**  
01582 727 272

**Go Cars**  
01582 404 040

## Further information about all onward travel

<b>Local Cycle Info</b> <a href="http://luton.gov.uk">luton.gov.uk</a> For more information about cycle routes.	<b>National Cycle Info</b> <a href="http://sustrans.org.uk">sustrans.org.uk</a> Sustrans is the UK's leading sustainable transport charity.	<b>Bus Times</b> See timetable displays at bus stops. <a href="http://www.traveline.info">www.traveline.info</a> 0871 200 22 33 call cost 12p per minute plus your phone company's access charge	<b>NextBuses</b> <b>Find the bus times for your stop.</b> Search for a bus stop by entering a postcode, street & town or a stop name & town.	<b>PlusBus</b> <a href="http://plusbus.info">plusbus.info</a> A discount price 'bus pass' that you buy with your train ticket. It gives you unlimited bus travel around your chosen town, on participating buses.
---	---	--	--	---

## National Rail Enquiries

<b>Online</b> <a href="http://nationalrail.co.uk">nationalrail.co.uk</a>	<b>NRE App</b> Free National Rail Enquiries app for iOS and Android	<b>Social Media</b> facebook.com/nationalrailenq @nationalrailenq	<b>Alert Me</b> You can sign up to Alert Me messages on the National Rail Enquiries website where you can receive train and platform notifications directly to your smart phone. <a href="http://nationalrail.co.uk/alertme">nationalrail.co.uk/alertme</a>	<b>Contact Centre</b> 03457 48 49 50 Calls cost no more than calls to geographic numbers (01 or 02) and may be recorded.	<b>PlusBike</b> <a href="http://nationalrail.co.uk/plusbike">nationalrail.co.uk/plusbike</a> For more information.
---	--	---	---	--	--



**National Rail**  
Britain's train companies working together



This poster shows details of popular destinations and main, frequent bus routes. Additional services may run, so please check with Traveline or see posters at local bus stops. Whilst considerable care has been taken to ensure the information contained on this poster is correct and accurate, National Rail cannot accept responsibility for any loss or inconvenience caused by any errors or omissions, or for loss, damage, injury or inconvenience relating to the cancellation, alteration, delay or diversion of a service. For any feedback, please e-mail [comments@onwardtravelposters.com](mailto:comments@onwardtravelposters.com)

Scan this code with your mobile for full station information.