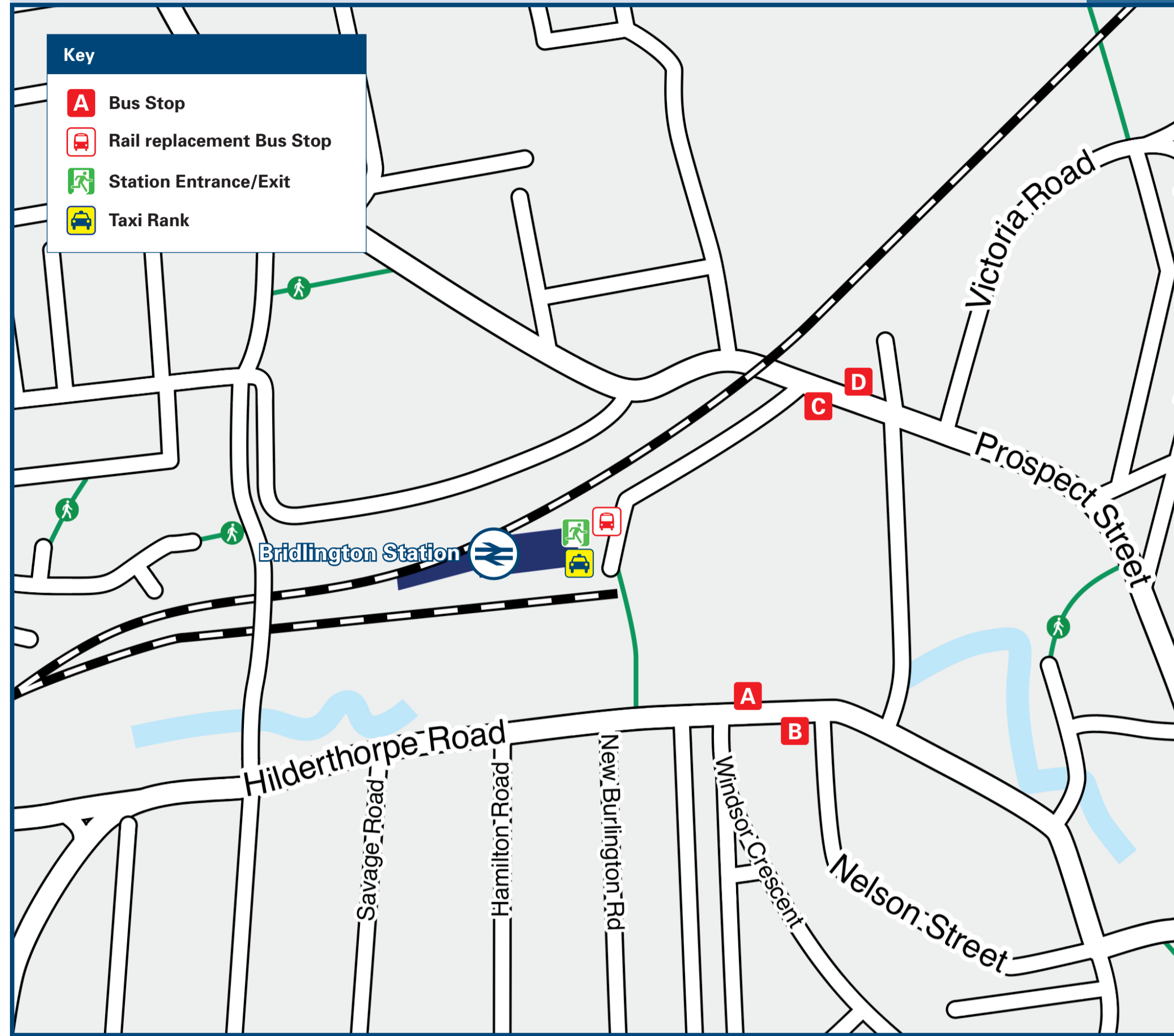




Bridlington Station

Onward Travel Information

Buses and Taxis



Rail replacement buses will pick up/drop off at the Station front.

Local area map



Main destinations by bus

(Data correct at February 2026)



DESTINATION	BUS ROUTES	BUS STOP
Barmston	130#, 136#	B, Bus Station
Beeford	136	Bus Station
Bempton	504#	C
Bridlington Town area -		
- Avocet Way	136	Bus Station
- Bempton Lane	504#	C
- Bridlington Hospital	502	C
	41, 141	B
- Burstall Hill/Northorpe Rise	500, 501	C
- Darwin Road	504#	C
- East Riding College	503, 512~	C
- Fortyfoot	131	A
- Town Centre (Bus Station)	10 minutes walk from this station (see Local area map) or take any bus from stops A or D	
	41, 130#, 131*, 136#, 141	A
- West Crayke	503, 512~	C
- West Hill Estate	502	C

DESTINATION	BUS ROUTES	BUS STOP
Buckton	504#	C
Burton Agnes	41, 141	B
Carnaby	41, 141	B
	131* (via Town Centre)	A
Driffeld	41, 141	B
	136#	B, Bus Station
Filey	12	Bus Station
Flamborough	14	Bus Station
Fraisthorpe	130#, 136#	B, Bus Station
Homsea	130#	B, Bus Station
Hunmanby	12	Bus Station
Lissett	130#, 136#	B, Bus Station
Marton	14	Bus Station
Nafferton	41, 141	B
North Frodingham	136	Bus Station
Reighton	12	Bus Station

DESTINATION	BUS ROUTES	BUS STOP
Sewerby Hall	14	Bus Station
Skipsea	130#, 136#	B, Bus Station
South Shore Holiday Village	136	Bus Station
Thornwick Holiday Centre	14	Bus Station
Ulrome	130#, 136#	B, Bus Station
Wansford	136	Bus Station

Notes

Bus routes 141, 500, 501, 502 and 503 run services on Mondays to Saturdays services, only. No Sunday services.
 Bus routes 12, 14, 41 and 504 run daily services, Mondays to Sundays.
 For bus times and days of operation please contact Traveline on www.traveline.info or call: 0871 200 22 33

Direct trains operate to this destination from this station.
 # Bus routes 130, 136 & 504 operate limited daytime services on Mondays to Saturdays, only. No evenings or Sundays services.
 * Bus route 131 runs a daytime service on Mondays to Fridays services, only. No evenings, Saturdays or Sundays service.
 ~ Bus route 512 operates a limited daytime service on Sundays, only.

Taxis

Bridlington station is served by a taxi rank or cab office. Check availability before travelling, and pre-book if necessary. Please consider using the following local operators: (Inclusion of this number doesn't represent any endorsement of the taxi firm)

1st Line Taxis
01262 400 150

Simon's Taxi Services
012626 606 060

Arrow Cars
01262 400 200

Further information about all onward travel

Local Cycle Info eastriding.gov.uk For more information about cycle routes.	National Cycle Info walkwheelcycletrust.org.uk	Bus Times See timetable displays at bus stops. www.traveline.info 0871 200 22 33 <small>calls cost 13p per minute plus your phone company's access charge</small>	PlusBus plusbus.info PlusBus is a discount price 'bus pass' that you buy with your train ticket. It gives you unlimited bus travel around your chosen town, on participating buses. Visit www.plusbus.info
---	--	--	---

National Rail Enquiries

Online nationalrail.co.uk	NRE App Free National Rail Enquiries app for iOS and Android	Social Media facebook.com/nationalrailenq @nationalrailenq	Alert Me You can sign up to Alert Me messages on the National Rail Enquiries website where you can receive train and platform notifications directly to your smart phone. nationalrail.co.uk/alertme	Contact Centre 03457 48 49 50 Calls cost no more than calls to geographic numbers (01 or 02) and may be recorded.	PlusBike nationalrail.co.uk/plusbike For more information.
---	--	--	---	--	--



This poster shows details of popular destinations and main, frequent bus routes. Additional services may run, so please check with Traveline or see posters at local bus stops. Whilst considerable care has been taken to ensure the information contained on this poster is correct and accurate, National Rail cannot accept responsibility for any loss or inconvenience caused by any errors or omissions, or for loss, damage, injury or inconvenience relating to the cancellation, alteration, delay or diversion of a service. For any feedback, please e-mail comments@onwardtravelposters.com

Scan this code with your mobile for full station information.